

V&V Reference Report

L2 ASCDS Version : 7.6.9

Observation 61727 - L2 Version 001
Chandra X-Ray Center

L2 Processing Date : Nov 8 2006

Contents

1	Front	2
2	OBI	3
2.1	OBI	3
2.1.1	Images	3
2.1.2	Bias	3
2.1.3	Parameters	4
2.1.4	Events	4
2.2	Compared Parameters	5
2.3	Aspect	6
2.4	Star Slots	8
2.5	FID Slots	8
A	Summary	9
A.1	Status	9
A.2	Comments	9

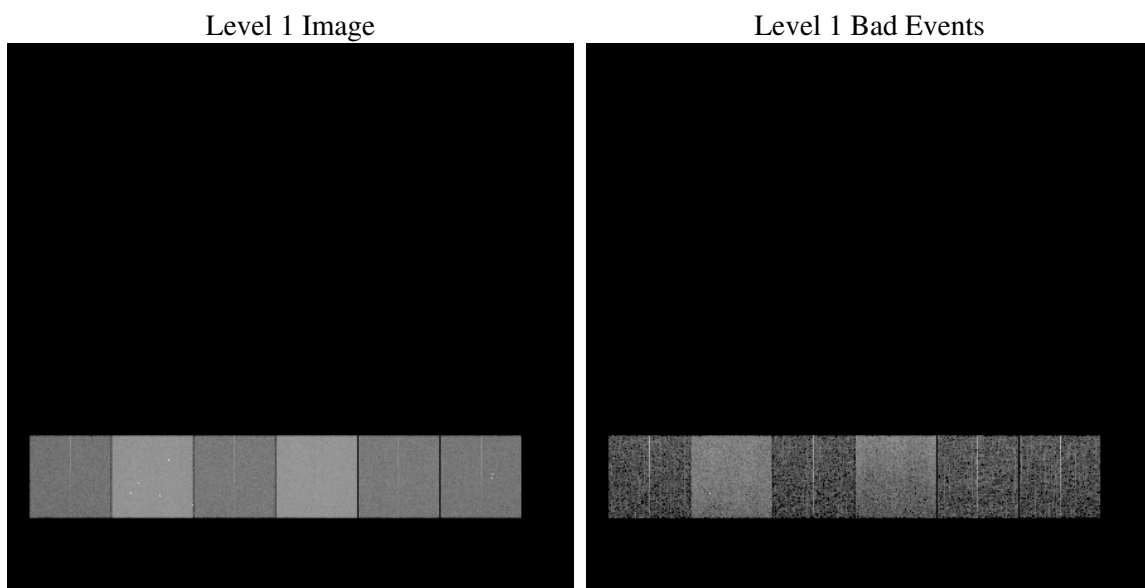
1 Front

seq_num	
obs_id	61727
title	ACIS-456789 diagnostics
observer	CHANDRA engineering request/realtime commanding
object	
dtcycle	0
cycle	P
ra_targ	0.0
dec_targ	0.0
ra_nom	181.01501846559
dec_nom	-33.974094368169
roll_nom	31.707673624047
revision	2
ontime	5040.4051696807
livetime	4976.5805244546
ontime4	1971.2943368554
ontime5	5344.6612022966
ontime6	2214.3310470432
ontime7	5040.4051696807
ontime8	2217.6541969627
ontime9	2113.7357968986
l2events	1205317

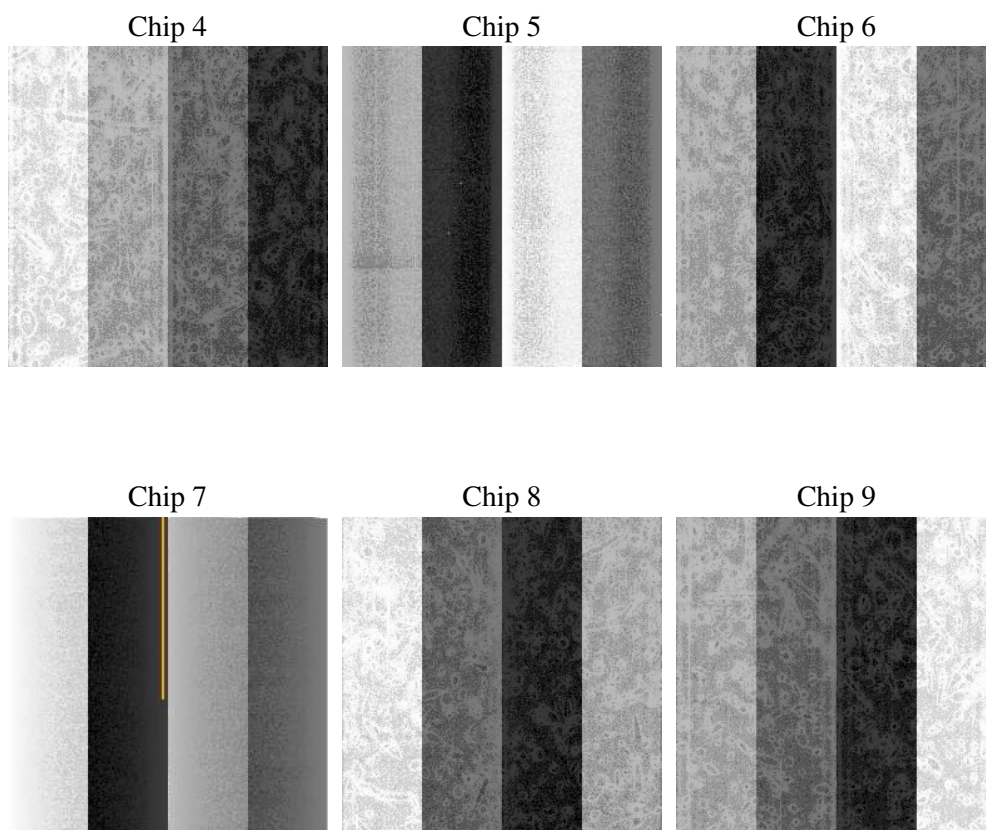
2 OBI

2.1 OBI

2.1.1 Images



2.1.2 Bias



2.1.3 Parameters

obi_num	1
ascdsver	7.6.9
caldbver	3.2.3
date	2006-11-09T01:05:27
revision	2

sched_exp_time	0.0
ontime	5043.0254534781
ontime4	1973.7915006578
ontime5	5347.6756873131
ontime6	2216.8692508489
ontime7	5043.0254534781
ontime8	2220.1103207618
ontime9	2116.3971206993
l1events	1424746

2.1.4 Events

	ccd 4	ccd 5	ccd 6	ccd 7	ccd 8	ccd 9
level 1 events	148491	371548	176736	382093	180218	165660
rejected events	17625	49554	17306	38213	19933	18440
rejected %	11%	13%	9%	10%	11%	11%

	ccd 4	ccd 5	ccd 6	ccd 7	ccd 8	ccd 9
grade 0 events	73966	41579	87129	64414	88284	79738
	49%	11%	49%	16%	48%	48%
grade 1 events	409	155	425	169	389	385
	0%	0%	0%	0%	0%	0%
grade 2 events	23355	154000	28036	103139	28197	27347
	15%	41%	15%	26%	15%	16%
grade 3 events	7968	10990	9705	26061	10187	9006
	5%	2%	5%	6%	5%	5%
grade 4 events	7934	10451	9635	25546	10195	9106
	5%	2%	5%	6%	5%	5%
grade 5 events	1135	5987	1400	5672	1488	1353
	0%	1%	0%	1%	0%	0%
grade 6 events	17870	105162	25167	124974	23676	22244
	12%	28%	14%	32%	13%	13%
grade 7 events	15854	43224	15239	32118	17802	16481
	10%	11%	8%	8%	9%	9%

2.2 Compared Parameters

Parameter	Planned	Actual	Parameter	Planned	Actual
Instrument	ACIS	ACIS	Obspar format version number	6	6
Detector	ACIS-456789	ACIS-456789	Obspar file type	PREDICTED	ACTUAL
Grating	NONE	NONE	Obspar update status	NONE	UPDATED
Data mode	FAINT	FAINT	On-chip summing requested	N	N
Observation mode	SECONDARY	SECONDARY	Subarray requested	NONE	NONE
Pointing RA	0	181.015018465592	Alternating exposures requested	N	N
Pointing Dec	0	-33.97409436816871	Primary exposure time	0.000000	3.2
Pointing Roll	0.0	31.70767362404743			
SIM focus pos (mm)	-0.684267	-0.7809083437167272			
SIM defocus (mm)	0	0.7524282956875696			
SIM translation stage pos (mm)	-190.132523	250.466033080201			
SIM translation stage offset (mm)	0	-0.01005468664627074			
Observation start time	99370154.93700001	99370154.168634			
Observation start date	2001-02-24T02:49:15	2001-02-24T02:49:14			
Observation end time	99381969.088	99381968.31908999			
Observation end date	2001-02-24T06:06:09	2001-02-24T06:06:08			
Read mode	TIMED	TIMED			

2.3 Aspect

2.4 Star Slots

2.5 FID Slots

A Summary

A.1 Status

V&V Scientist	Jen Lauer
V&V Date (YYYY-MM-DD)	2006.11.09
V&V Edition	1
V&V Disposition and Status	OK
V&V Charge Time	5.04040516

A.2 Comments

The ACIS focal plane temperature was above calibration limits for the entire observation.