

V&V Reference Report

L2 ASCDS Version : 7.6.9

Observation 61726 - L2 Version 001
Chandra X-Ray Center

L2 Processing Date : Nov 8 2006

Contents

1	Front	2
2	OBI	3
2.1	OBI	3
2.1.1	Images	3
2.1.2	Bias	3
2.1.3	Parameters	4
2.1.4	Events	4
2.2	Compared Parameters	5
2.3	Aspect	6
2.4	Star Slots	8
2.5	FID Slots	8
A	Summary	9
A.1	Status	9
A.2	Comments	9

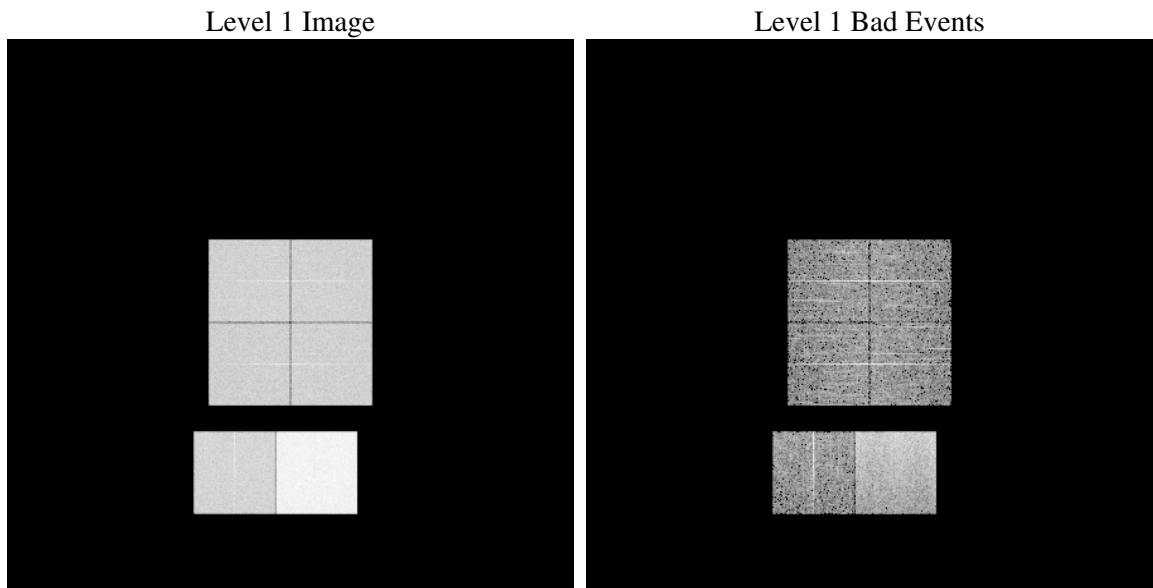
1 Front

seq_num	
obs_id	61726
title	ACIS-012367 diagnostics
observer	CHANDRA engineering request/realtime commanding
object	
dtcycle	0
cycle	P
ra_targ	0.0
dec_targ	0.0
ra_nom	231.89634786897
dec_nom	-58.949002700276
roll_nom	71.736659414464
revision	2
ontime	6612.8670560569
livetime	6529.1309516026
ontime0	2733.4466279745
ontime1	2694.5948291272
ontime2	2561.7538277805
ontime3	2639.3742586225
ontime6	2850.2155105621
ontime7	6612.8670560569
l2events	1329545

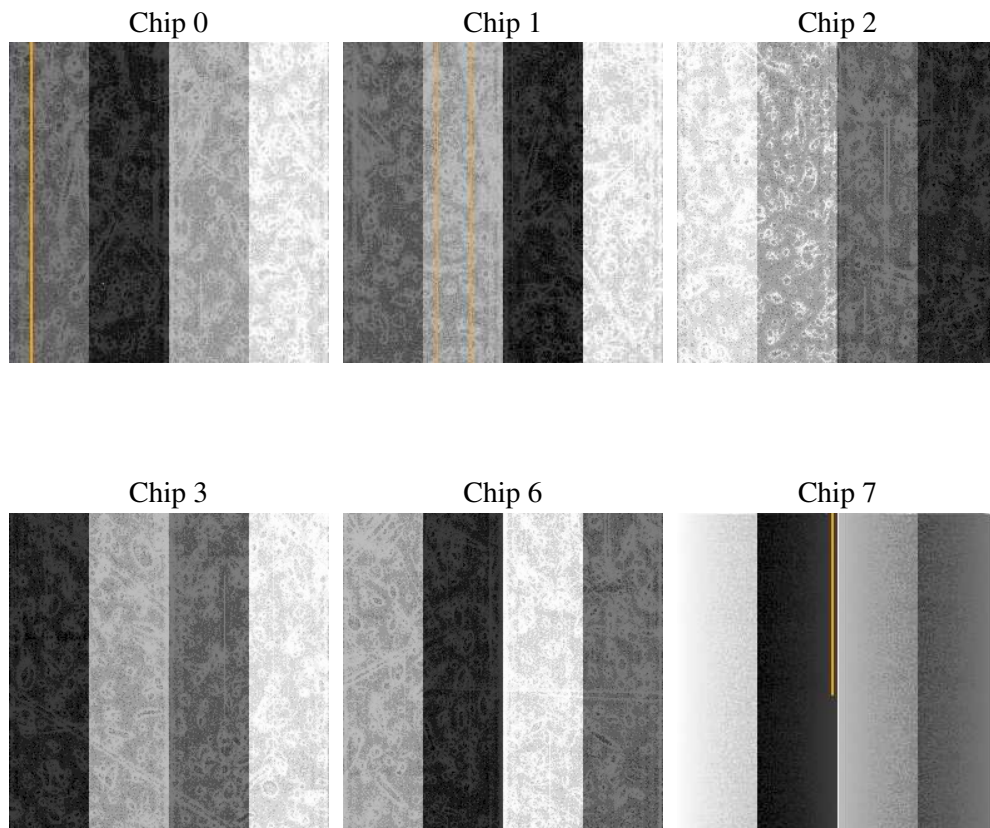
2 OBI

2.1 OBI

2.1.1 Images



2.1.2 Bias



2.1.3 Parameters

obi_num	1
ascdsver	7.6.9
caldbver	3.2.3
date	2006-11-09T01:16:36
revision	2

sched_exp_time	0.0
ontime	6614.8967883289
ontime0	2735.4353202432
ontime1	2696.5424814075
ontime2	2563.6604400575
ontime3	2641.4450308979
ontime6	2852.1124608517
ontime7	6614.8967883289
l1events	1543379

2.1.4 Events

	ccd 0	ccd 1	ccd 2	ccd 3	ccd 6	ccd 7
level 1 events	207435	204752	198718	203636	226576	502262
rejected events	21292	20676	21545	21790	22524	49579
rejected %	10%	10%	10%	10%	9%	9%

	ccd 0	ccd 1	ccd 2	ccd 3	ccd 6	ccd 7
grade 0 events	102568	101874	98569	101590	111613	85864
	49%	49%	49%	49%	49%	17%
grade 1 events	585	534	472	551	570	216
	0%	0%	0%	0%	0%	0%
grade 2 events	32714	32364	31342	31878	35345	134621
	15%	15%	15%	15%	15%	26%
grade 3 events	11845	11676	11167	11623	12649	34978
	5%	5%	5%	5%	5%	6%
grade 4 events	12020	11646	11208	11547	12583	34555
	5%	5%	5%	5%	5%	6%
grade 5 events	1569	1550	1495	1591	1834	7245
	0%	0%	0%	0%	0%	1%
grade 6 events	27201	26750	25113	25443	32084	162903
	13%	13%	12%	12%	14%	32%
grade 7 events	18933	18358	19352	19413	19898	41880
	9%	8%	9%	9%	8%	8%

2.2 Compared Parameters

Parameter	Planned	Actual	Parameter	Planned	Actual
Instrument	ACIS	ACIS	Obspar format version number	6	6
Detector	ACIS-012367	ACIS-012367	Obspar file type	PREDICTED	ACTUAL
Grating	NONE	NONE	Obspar update status	NONE	UPDATED
Data mode	FAINT	FAINT	On-chip summing requested	N	N
Observation mode	SECONDARY	SECONDARY	Subarray requested	NONE	NONE
Pointing RA	0	231.8963478689705	Alternating exposures requested	N	N
Pointing Dec	0	-58.94900270027566	Primary exposure time	3.2	3.2
Pointing Roll	0.0	71.73665941446423			
SIM focus pos (mm)	-0.782348	-0.7809083437167272			
SIM defocus (mm)	0	0.7524282956875696			
SIM translation stage pos (mm)	-233.592463	250.466033080201			
SIM translation stage offset (mm)	0	-0.01005468664627074			
Observation start time	99381969.087557	99381968.31908999			
Observation start date	2001-02-24T06:06:09	2001-02-24T06:06:08			
Observation end time	99427054.739297	99427053.970827			
Observation end date	2001-02-24T18:37:35	2001-02-24T18:37:33			
Read mode	TIMED	TIMED			

2.3 Aspect

2.4 Star Slots

2.5 FID Slots

A Summary

A.1 Status

V&V Scientist	Jen Lauer
V&V Date (YYYY-MM-DD)	2006.11.09
V&V Edition	1
V&V Disposition and Status	OK
V&V Charge Time	6.61286705

A.2 Comments