

V&V Reference Report

L2 ASCDS Version : 7.6.9

Observation 61720 - L2 Version _e1
Chandra X-Ray Center

L2 Processing Date : Nov 7 2006

Contents

1	Front	2
2	OBI Primary	3
2.1	OBI	3
2.1.1	Images	3
2.1.2	Bias	3
2.1.3	Parameters	4
2.1.4	Events	4
2.2	Compared Parameters	5
2.3	Aspect	6
2.4	Star Slots	8
2.5	FID Slots	8
3	OBI Secondary	8
3.1	OBI	8
3.1.1	Images	8
3.1.2	Bias	8
3.1.3	Parameters	9
3.1.4	Events	9
A	Summary	10
A.1	Status	10
A.2	Comments	10

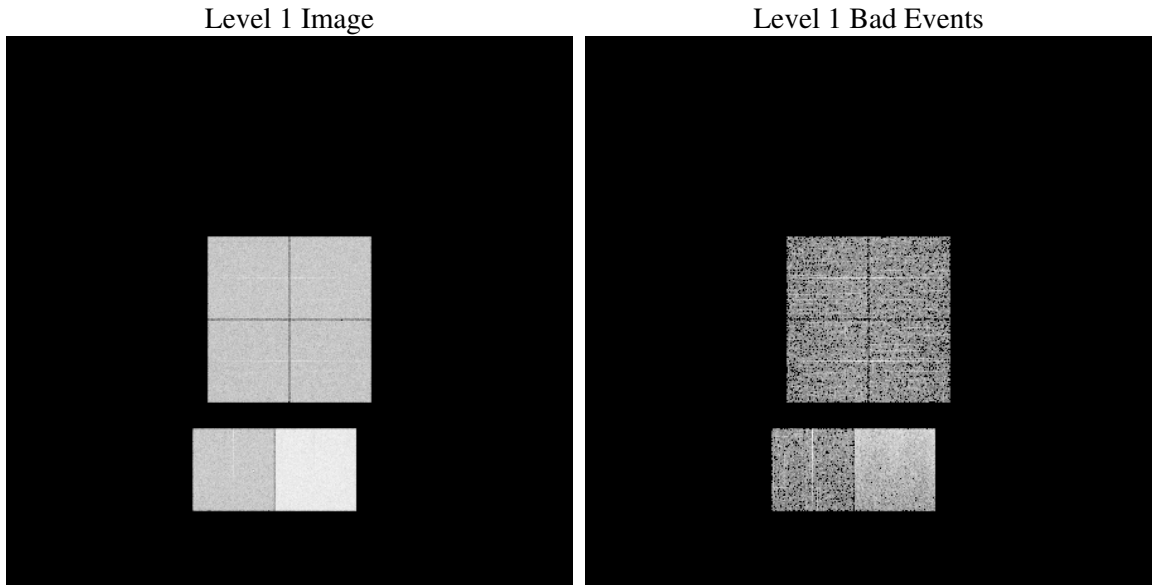
1 Front

seq_num	
obs_id	61720
title	ACIS-012367 diagnostics
observer	CHANDRA engineering request/realtime commanding
object	
dtcycle	0
cycle	P
ra_targ	0.0
dec_targ	0.0
ra_nom	68.292127299313
dec_nom	31.178447947871
roll_nom	278.63586783174
revision	3
ontime	4094.5380997807
livetime	4052.9547836999
ontime0	1609.4626577497
ontime1	1645.7909777761
ontime2	1520.4776976705
ontime3	1548.7239377052
ontime6	1621.380577758
ontime7	4094.5380997807
l2events	789348

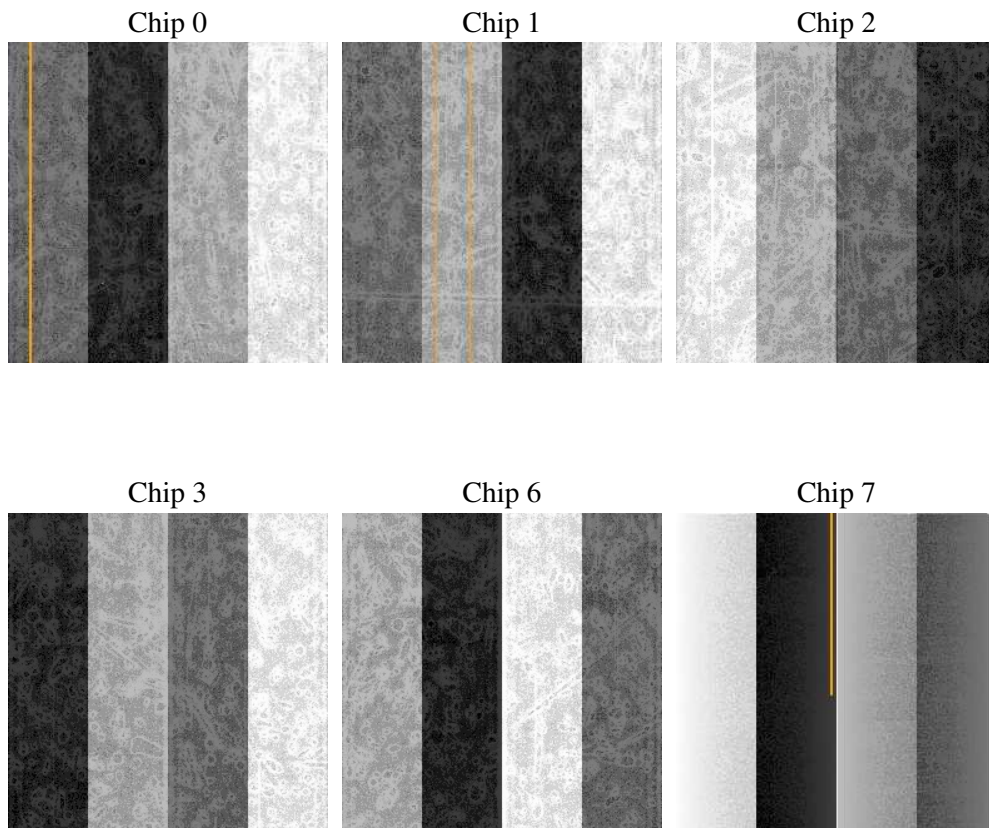
2 OBI Primary

2.1 OBI

2.1.1 Images



2.1.2 Bias



2.1.3 Parameters

obi_num	0
ascdsver	7.6.9
caldsver	3.2.3
date	2006-11-08T01:50:52
revision	3

sched_exp_time	0.0
ontime	4121.8608033657
ontime0	1624.4980813265
ontime1	1660.8674413562
ontime2	1535.5952012539
ontime3	1555.8004012704
ontime6	1632.5801613331
ontime7	4121.8608033657
l1events	919421

2.1.4 Events

	ccd 0	ccd 1	ccd 2	ccd 3	ccd 6	ccd 7
level 1 events	121442	124284	116636	118595	128069	310395
rejected events	13080	12970	12829	13104	13392	31534
rejected %	10%	10%	10%	11%	10%	10%

	ccd 0	ccd 1	ccd 2	ccd 3	ccd 6	ccd 7
grade 0 events	60232	61737	58127	59221	63006	53798
	49%	49%	49%	49%	49%	17%
grade 1 events	354	419	383	407	375	129
	0%	0%	0%	0%	0%	0%
grade 2 events	19210	19776	18527	18629	19910	83449
	15%	15%	15%	15%	15%	26%
grade 3 events	6992	7084	6612	6723	7132	21917
	5%	5%	5%	5%	5%	7%
grade 4 events	6905	7258	6565	6690	7060	21729
	5%	5%	5%	5%	5%	7%
grade 5 events	983	1019	905	1000	1074	4327
	0%	0%	0%	0%	0%	1%
grade 6 events	16114	16546	15046	14743	18419	99889
	13%	13%	12%	12%	14%	32%
grade 7 events	10652	10445	10471	11182	11093	25157
	8%	8%	8%	9%	8%	8%

2.2 Compared Parameters

Parameter	Planned	Actual	Parameter	Planned	Actual
Instrument	ACIS	ACIS	Obspar format version number	6	6
Detector	ACIS-012367	ACIS-012367	Obspar file type	PREDICTED	ACTUAL
Grating	NONE	NONE	Obspar update status	NONE	UPDATED
Data mode	FAINT	FAINT	On-chip summing requested	N	N
Observation mode	SECONDARY	SECONDARY	Subarray requested	NONE	NONE
Pointing RA	0	68.29212729931265	Alternating exposures requested	N	Y
Pointing Dec	0	31.17844794787148	Primary exposure time	0.000000	4
Pointing Roll	0.0	278.6358678317388	Secondary exposure time	N/A	3.2
SIM focus pos (mm)	-0.782348	-0.6828225247311905	Duty cycle	N/A	1
SIM defocus (mm)	0	0.8505141146731063			
SIM translation stage pos (mm)	-233.592463	250.466033080201			
SIM translation stage offset (mm)	0	-0.01005468664627074			
Observation start time	99856419.05599999	99856418.28740001			
Observation start date	2001-03-01T17:53:39	2001-03-01T17:53:38			
Observation end time	99884932.507	99884931.738501			
Observation end date	2001-03-02T01:48:53	2001-03-02T01:48:51			
Read mode	TIMED	TIMED			

2.3 Aspect

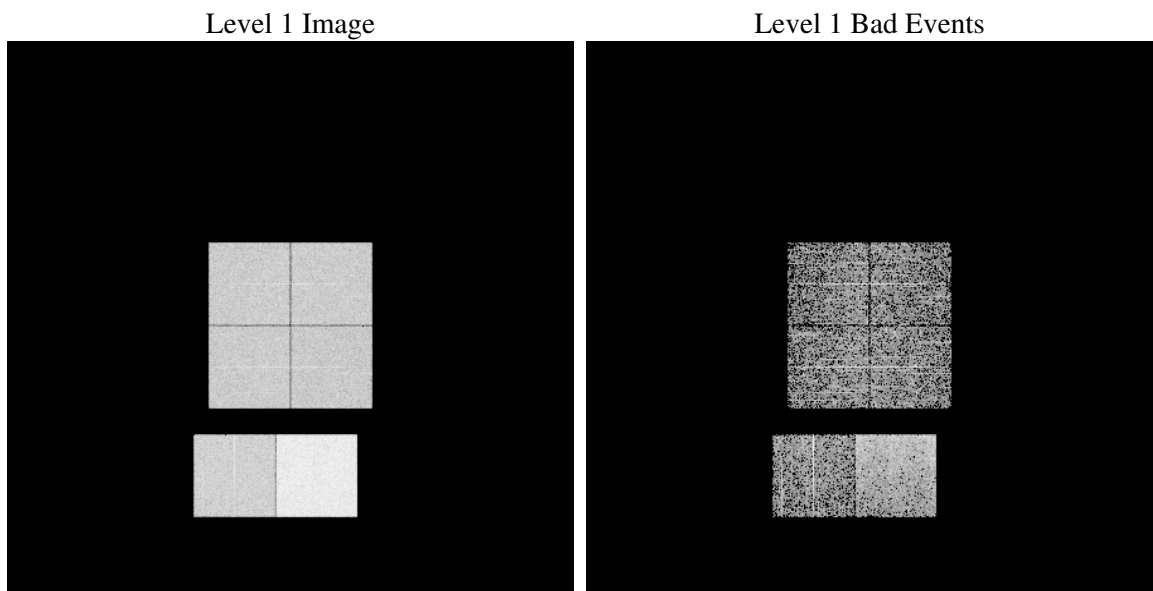
2.4 Star Slots

2.5 FID Slots

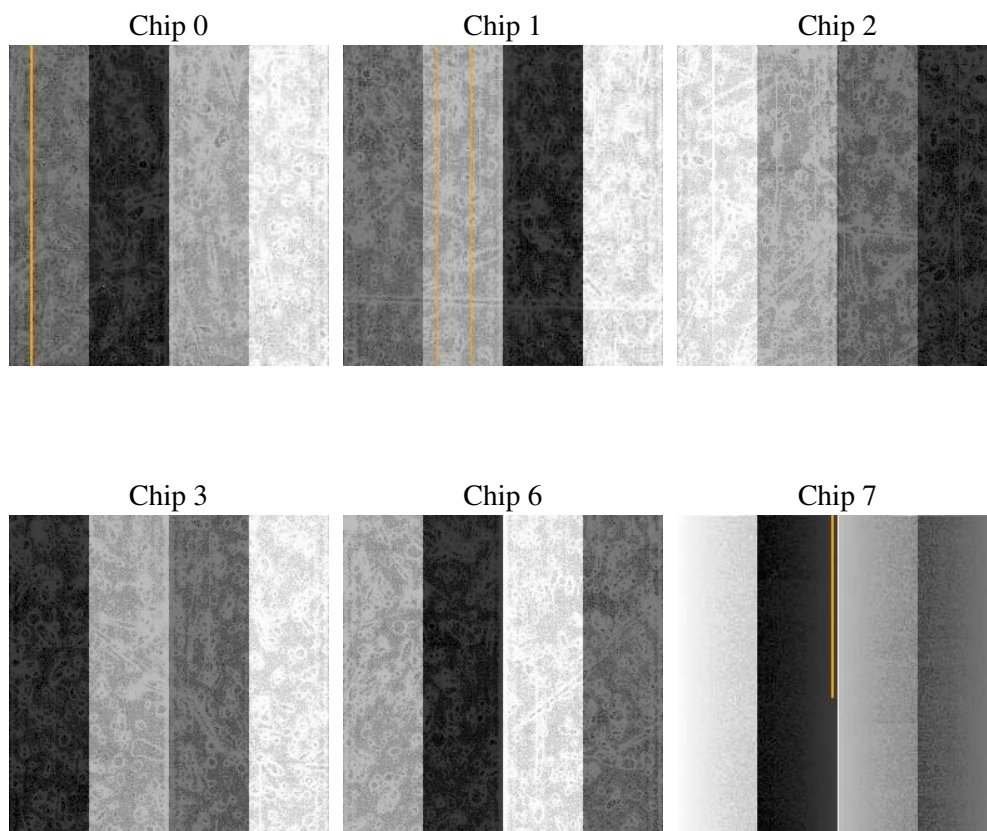
3 OBI Secondary

3.1 OBI

3.1.1 Images



3.1.2 Bias



3.1.3 Parameters

obi_num	0
ascdsver	7.6.9
caldsver	3.2.3
date	2006-11-08T01:44:44
revision	3

sched_exp_time	0.0
ontime	2508.5649533272
ontime0	1131.1229569912
ontime1	1127.8819169998
ontime2	1098.7125570774
ontime3	1050.0969572067
ontime6	1208.9079167843
ontime7	2508.5649533272
l1events	621600

3.1.4 Events

	ccd 0	ccd 1	ccd 2	ccd 3	ccd 6	ccd 7
level 1 events	85193	85175	84673	80919	96469	189171
rejected events	8745	8681	9896	9898	10850	19737
rejected %	10%	10%	11%	12%	11%	10%

	ccd 0	ccd 1	ccd 2	ccd 3	ccd 6	ccd 7
grade 0 events	42282	42424	42122	40109	47109	32435
	49%	49%	49%	49%	48%	17%
grade 1 events	229	211	218	251	256	85
	0%	0%	0%	0%	0%	0%
grade 2 events	13518	13518	13182	12664	14956	50569
	15%	15%	15%	15%	15%	26%
grade 3 events	4849	4895	4720	4468	5475	13363
	5%	5%	5%	5%	5%	7%
grade 4 events	4944	4883	4769	4502	5344	13092
	5%	5%	5%	5%	5%	6%
grade 5 events	658	654	581	657	769	2754
	0%	0%	0%	0%	0%	1%
grade 6 events	11119	11183	10632	10197	13714	61035
	13%	13%	12%	12%	14%	32%
grade 7 events	7594	7407	8449	8071	8846	15838
	8%	8%	9%	9%	9%	8%

A Summary

A.1 Status

V&V Scientist	Jen Lauer
V&V Date (YYYY-MM-DD)	2006.11.08
V&V Edition	1
V&V Disposition and Status	OK
V&V Charge Time	6.58782143

A.2 Comments