

V&V Reference Report

L2 ASCDS Version : 8.4.5

Observation 61717 - L2 Version 3
Chandra X-Ray Center

L2 Processing Date : Sep 12 2012

Contents

1	Front	2
2	OBI	3
2.1	OBI	3
2.1.1	Images	3
2.1.2	Bias	3
2.1.3	Parameters	4
2.1.4	Events	4
2.2	Compared Parameters	5
2.3	Star Slots	6
2.4	FID Slots	6
A	Summary	7
A.1	Status	7
A.2	Comments	7

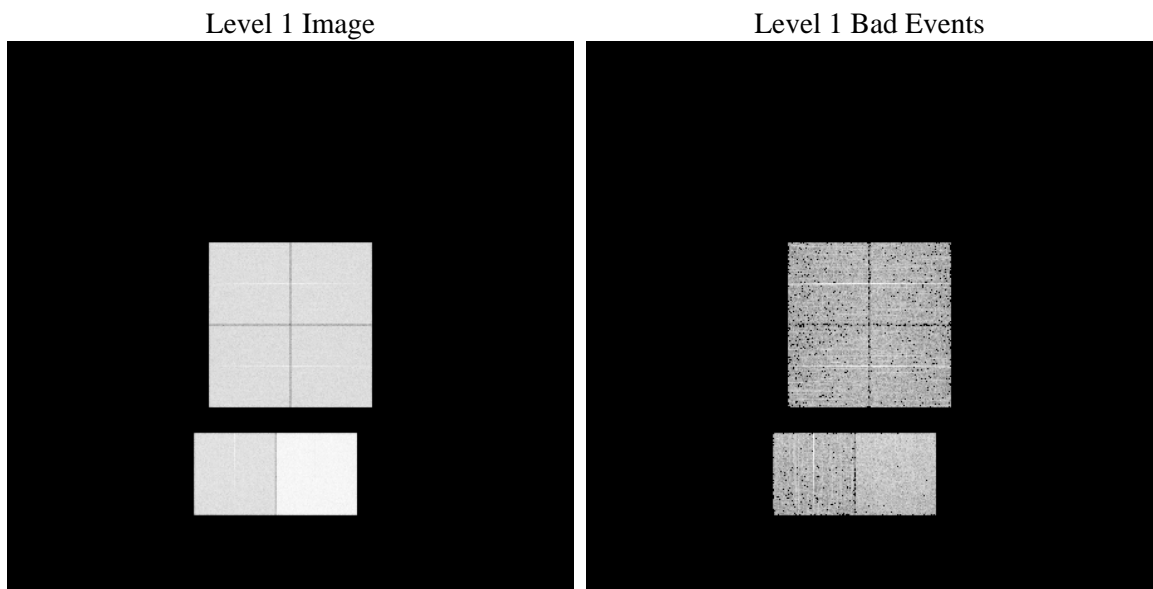
1 Front

seq_num	 	Sequence number
obs_id	61717	Observation id
title	ACIS-012367 diagnostics	Proposal title
observer	CHANDRA engineering request/realtime commanding	Principal investig
object	 	Source name
dtcycle	0	
cycle	P	events from which exps? Prim/Second/Both
ra_targ	0.0	Observer's specified target RA [deg]
dec_targ	0.0	Observer's specified target Dec [deg]
ra_nom	275.16601377697	Nominal RA [deg]
dec_nom	72.053049998195	Nominal Dec [deg]
roll_nom	69.170289553291	Nominal Roll [deg]
revision	3	Processing version of data
ontime	6525.132375136	Sum of GTIs [s]
livetime	6442.507220039	Livetime [s]
ontime0	2758.1221016794	Sum of GTIs [s]
ontime1	2745.1579616964	Sum of GTIs [s]
ontime2	2609.0345511138	Sum of GTIs [s]
ontime3	2625.2398208827	Sum of GTIs [s]
ontime6	2865.0765510201	Sum of GTIs [s]
ontime7	6525.132375136	Sum of GTIs [s]
l2events	1340646	Number of level 2 events

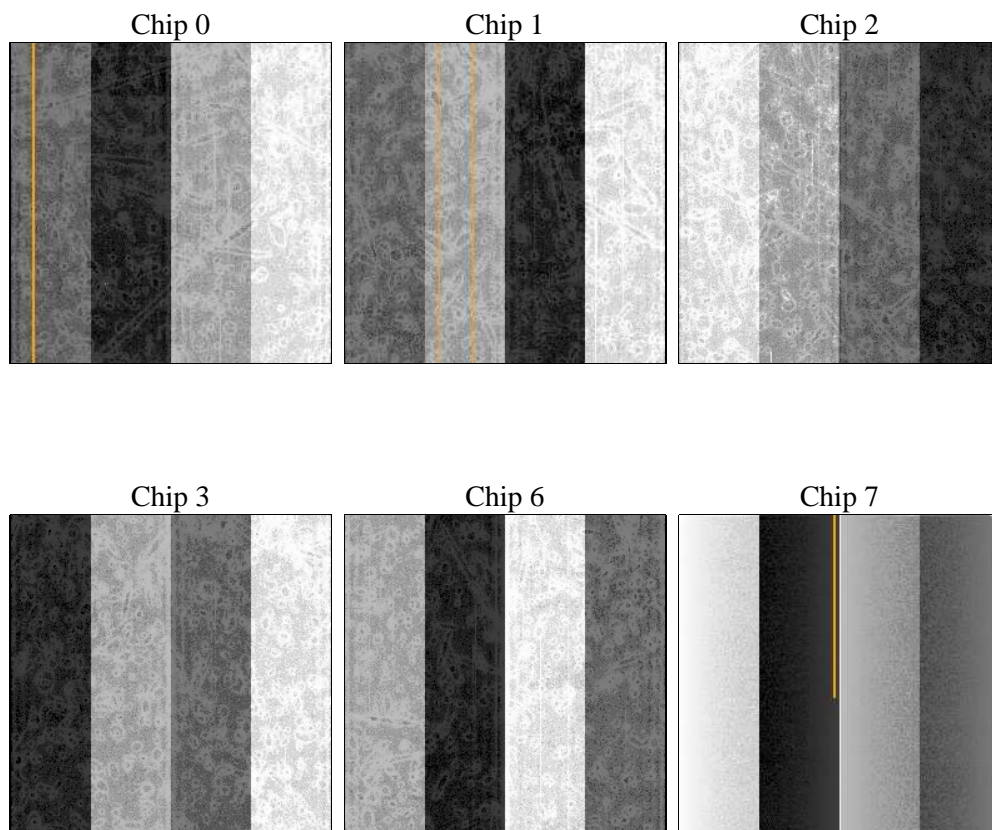
2 OBI

2.1 OBI

2.1.1 Images



2.1.2 Bias



2.1.3 Parameters

obi_num	0	Obi number	sched_exp_time	0.0	[s] Scheduled observation exposure time
ascdsver	8.4.5	Processing system revision	ontime	6525.132375136	Sum of GTIs [s]
caldbver	4.5.1.1	 	ontime0	2758.1221016794	Sum of GTIs [s]
date	2012-09-12T07:16:38	Date and time of file creation	ontime1	2745.1579616964	Sum of GTIs [s]
revision	3	Processing version of data	ontime2	2609.0345511138	Sum of GTIs [s]
			ontime3	2625.2398208827	Sum of GTIs [s]
			ontime6	2865.0765510201	Sum of GTIs [s]
			ontime7	6525.132375136	Sum of GTIs [s]
			l1events	1540411	Number of level 1 events

2.1.4 Events

	ccd 0	ccd 1	ccd 2	ccd 3	ccd 6	ccd 7		ccd 0	ccd 1	ccd 2	ccd 3	ccd 6	ccd 7
level 1 events	208033	208618	200925	201266	228363	493206	grade 0 events	103083	103076	100220	100276	112023	117645
rejected events	20699	21406	20973	21609	22838	34997		49%	49%	49%	49%	49%	23%
rejected %	9%	10%	10%	10%	10%	7%	grade 1 events	532	546	511	567	569	318
								0%	0%	0%	0%	0%	0%
							grade 2 events	33205	33069	31566	31486	35465	100743
								15%	15%	15%	15%	15%	20%
							grade 3 events	11887	11897	11305	11371	12576	47032
								5%	5%	5%	5%	5%	9%
							grade 4 events	11861	11908	11251	11383	12623	46262
								5%	5%	5%	5%	5%	9%
							grade 5 events	1509	1586	1488	1564	1809	7431
								0%	0%	0%	0%	0%	1%
							grade 6 events	27298	27262	25610	25141	32838	146751
								13%	13%	12%	12%	14%	29%
							grade 7 events	18658	19274	18974	19478	20460	27024
								8%	9%	9%	9%	8%	5%

2.2 Compared Parameters

Parameter	Planned	Actual	Parameter	Planned	Actual
Instrument	ACIS	ACIS	Obspar format version number	7	7
Detector	ACIS-012367	ACIS-012367	Obspar file type	PREDICTED	ACTUAL
Grating	NONE	NONE	Obspar update status	NONE	UPDATED
Data mode	FAINT	FAINT	On-chip summing requested	N	N
Observation mode	SECONDARY	SECONDARY	Subarray requested	NONE	NONE
[deg] Pointing RA	0	275.166013776968	Alternating exposures requested	N	N
[deg] Pointing Dec	0	72.05304999819481	[s] Primary exposure time	0.000000	3.2
[deg] Pointing Roll	0.0	69.17028955329097			
[mm] SIM focus pos	-0.782348	-0.7809083437167272			
[mm] SIM defocus	0	0.7524282956875696			
[mm] SIM translation stage pos	-233.592463	250.466033080201			
[mm] SIM translation stage offset	0	-0.01005468664627074			
[s] Observation start time (MET)	100085658.265	100085657.49625			
Observation start date	2001-03-04T09:34:18	2001-03-04T09:34:17			
[s] Observation end time (MET)	100111576.416	100111575.64726			
Observation end date	2001-03-04T16:46:16	2001-03-04T16:46:15			
Read mode	TIMED	TIMED			

2.3 Star Slots

2.4 FID Slots

A Summary

A.1 Status

V&V Scientist	Jen Lauer
V&V Date (YYYY-MM-DD)	2012.09.18
V&V Edition	1
V&V Disposition and Status	OK
V&V Charge Time	6.525132375136

A.2 Comments