

V&V Reference Report

L2 ASCDS Version : 7.6.9

Observation 61717 - L2 Version 001
Chandra X-Ray Center

L2 Processing Date : Nov 7 2006

Contents

1	Front	2
2	OBI	3
2.1	OBI	3
2.1.1	Images	3
2.1.2	Bias	3
2.1.3	Parameters	4
2.1.4	Events	4
2.2	Compared Parameters	5
2.3	Aspect	6
2.4	Star Slots	8
2.5	FID Slots	8
A	Summary	9
A.1	Status	9
A.2	Comments	9

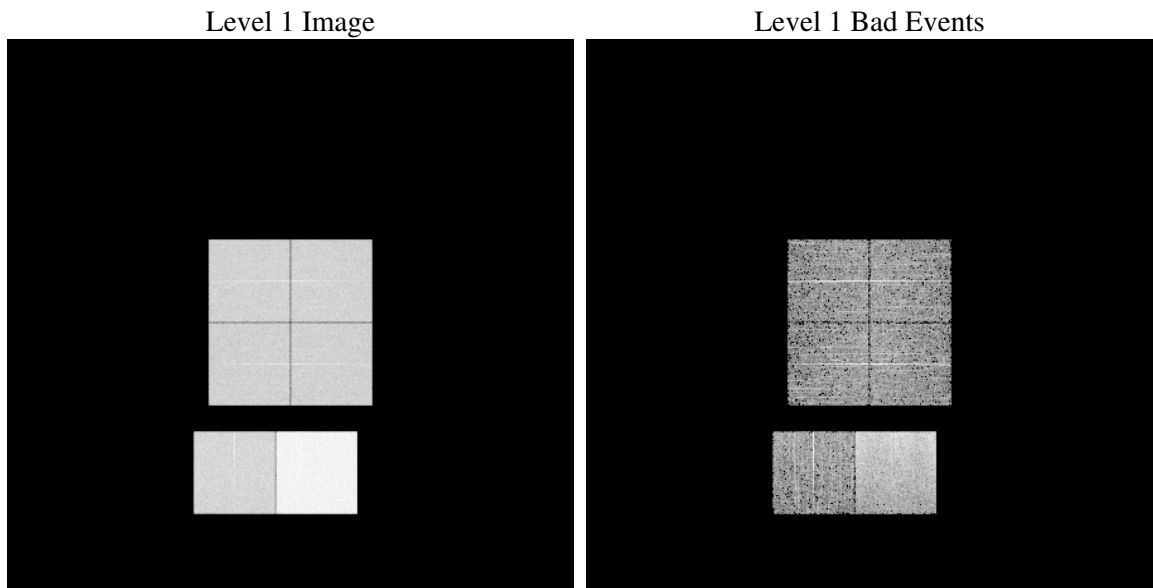
1 Front

seq_num	
obs_id	61717
title	ACIS-012367 diagnostics
observer	CHANDRA engineering request/realtime commanding
object	
dtcycle	0
cycle	P
ra_targ	0.0
dec_targ	0.0
ra_nom	275.16601386031
dec_nom	72.053049968439
roll_nom	69.170289464858
revision	2
ontime	6525.6996308565
livetime	6443.067292826
ontime0	2757.1303973943
ontime1	2744.2072973996
ontime2	2608.1249268204
ontime3	2624.1660365909
ontime6	2864.20796673
ontime7	6525.6996308565
l2events	1326334

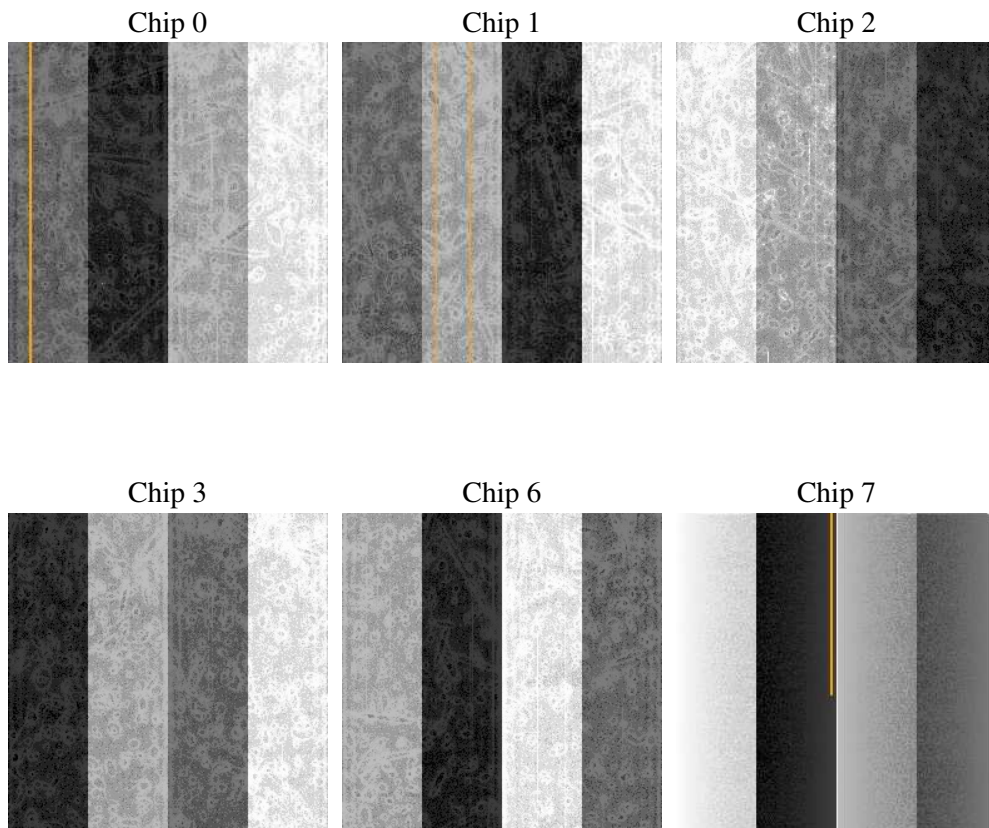
2 OBI

2.1 OBI

2.1.1 Images



2.1.2 Bias



2.1.3 Parameters

obi_num	0
ascdsver	7.6.9
caldbver	3.2.3
date	2006-11-08T02:06:07
revision	2

sched_exp_time	0.0
ontime	6527.3907210231
ontime0	2758.1221016794
ontime1	2745.1579616964
ontime2	2609.0345511138
ontime3	2625.2398208827
ontime6	2865.0765510201
ontime7	6527.3907210231
l1events	1540411

2.1.4 Events

	ccd 0	ccd 1	ccd 2	ccd 3	ccd 6	ccd 7
level 1 events	208033	208618	200925	201266	228363	493206
rejected events	20699	21406	20973	21609	22837	49447
rejected %	9%	10%	10%	10%	10%	10%

	ccd 0	ccd 1	ccd 2	ccd 3	ccd 6	ccd 7
grade 0 events	103086	103077	100228	100281	112028	83967
	49%	49%	49%	49%	49%	17%
grade 1 events	532	546	511	567	569	204
	0%	0%	0%	0%	0%	0%
grade 2 events	33202	33068	31558	31481	35460	131846
	15%	15%	15%	15%	15%	26%
grade 3 events	11889	11899	11305	11371	12579	34126
	5%	5%	5%	5%	5%	6%
grade 4 events	11861	11909	11254	11387	12625	33442
	5%	5%	5%	5%	5%	6%
grade 5 events	1511	1586	1489	1565	1810	7117
	0%	0%	0%	0%	0%	1%
grade 6 events	27296	27259	25607	25137	32834	160378
	13%	13%	12%	12%	14%	32%
grade 7 events	18656	19274	18973	19477	20458	42126
	8%	9%	9%	9%	8%	8%

2.2 Compared Parameters

Parameter	Planned	Actual	Parameter	Planned	Actual
Instrument	ACIS	ACIS	Obspar format version number	6	6
Detector	ACIS-012367	ACIS-012367	Obspar file type	PREDICTED	ACTUAL
Grating	NONE	NONE	Obspar update status	NONE	UPDATED
Data mode	FAINT	FAINT	On-chip summing requested	N	N
Observation mode	SECONDARY	SECONDARY	Subarray requested	NONE	NONE
Pointing RA	0	275.1660138603065	Alternating exposures requested	N	N
Pointing Dec	0	72.05304996843851	Primary exposure time	0.000000	3.2
Pointing Roll	0.0	69.17028946485786			
SIM focus pos (mm)	-0.782348	-0.7809083437167272			
SIM defocus (mm)	0	0.7524282956875696			
SIM translation stage pos (mm)	-233.592463	250.466033080201			
SIM translation stage offset (mm)	0	-0.01005468664627074			
Observation start time	100085658.265	100085657.49625			
Observation start date	2001-03-04T09:34:18	2001-03-04T09:34:17			
Observation end time	100111576.416	100111575.64726			
Observation end date	2001-03-04T16:46:16	2001-03-04T16:46:15			
Read mode	TIMED	TIMED			

2.3 Aspect

2.4 Star Slots

2.5 FID Slots

A Summary

A.1 Status

V&V Scientist	Jen Lauer
V&V Date (YYYY-MM-DD)	2006.11.08
V&V Edition	1
V&V Disposition and Status	OK
V&V Charge Time	6.52569963

A.2 Comments