

V&V Reference Report

L2 ASCDS Version : 7.6.9

Observation 61703 - L2 Version 001
Chandra X-Ray Center

L2 Processing Date : Nov 15 2006

Contents

1	Front	2
2	OBI	3
2.1	OBI	3
2.1.1	Images	3
2.1.2	Bias	3
2.1.3	Parameters	4
2.1.4	Events	4
2.2	Compared Parameters	5
2.3	Aspect	6
2.4	Star Slots	8
2.5	FID Slots	8
A	Summary	9
A.1	Status	9
A.2	Comments	9

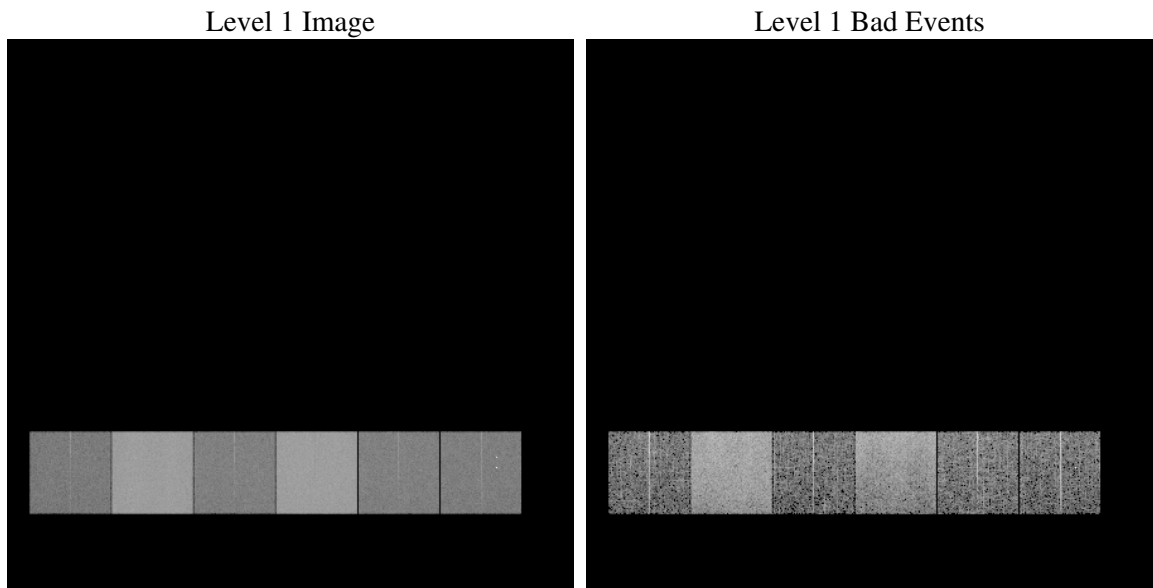
1 Front

seq_num	
obs_id	61703
title	ACIS-456789 diagnostics
observer	CHANDRA engineering request/realtime commanding
object	
dtcycle	0
cycle	P
ra_targ	0.0
dec_targ	0.0
ra_nom	135.02321302685
dec_nom	-14.017764375577
roll_nom	289.08602945862
revision	2
ontime	5552.5950623751
livetime	5482.2847603239
ontime4	2123.7335435003
ontime5	6016.093947053
ontime6	2340.8421031684
ontime7	5552.5950623751
ontime8	2327.9599036425
ontime9	2298.585403502
l2events	1297792

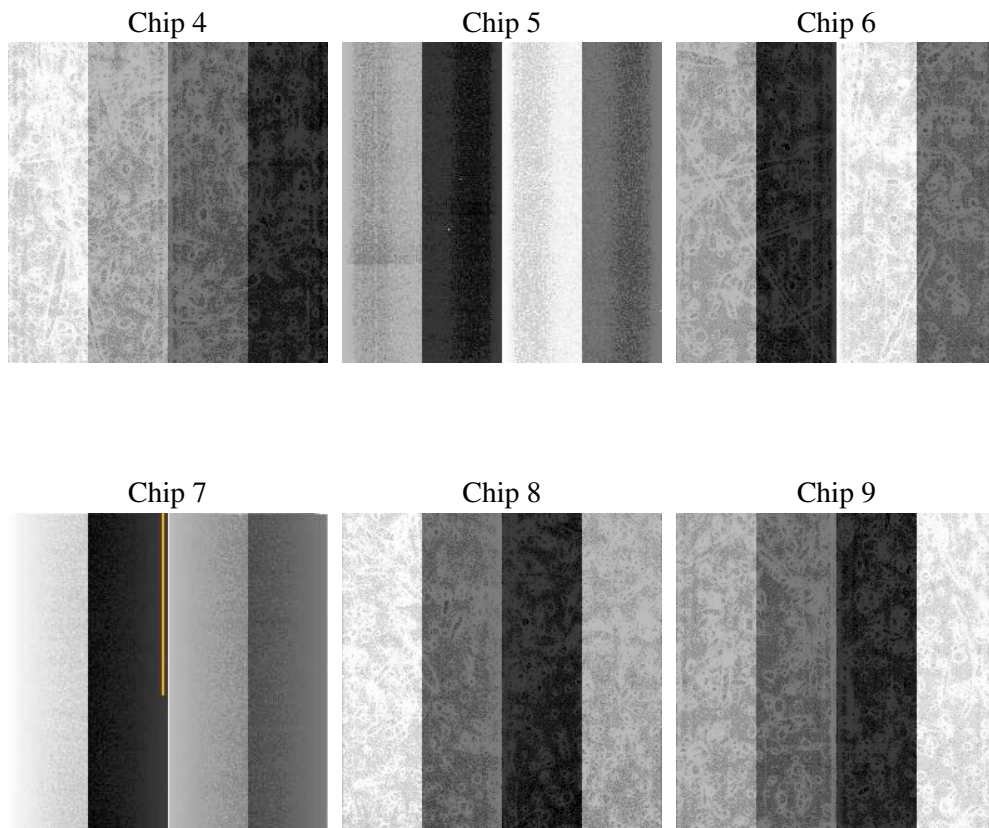
2 OBI

2.1 OBI

2.1.1 Images



2.1.2 Bias



2.1.3 Parameters

obi_num	0
ascdsver	7.6.9
caldsver	3.2.4
date	2006-11-16T02:31:18
revision	2

sched_exp_time	0.0
ontime	5555.1050691307
ontime4	2126.1204302609
ontime5	6018.5629138052
ontime6	2343.2700299323
ontime7	5555.1050691307
ontime8	2330.3057503998
ontime9	2301.1364502609
l1events	1535324

2.1.4 Events

	ccd 4	ccd 5	ccd 6	ccd 7	ccd 8	ccd 9
level 1 events	158437	407497	185894	419191	186492	177813
rejected events	19542	56116	19525	43275	22562	19929
rejected %	12%	13%	10%	10%	12%	11%

	ccd 4	ccd 5	ccd 6	ccd 7	ccd 8	ccd 9
grade 0 events	78647	41895	91217	70931	90656	86221
	49%	10%	49%	16%	48%	48%
grade 1 events	441	94	490	170	481	458
	0%	0%	0%	0%	0%	0%
grade 2 events	24600	169856	28635	111673	29136	29537
	15%	41%	15%	26%	15%	16%
grade 3 events	8517	12046	10257	28770	10343	9572
	5%	2%	5%	6%	5%	5%
grade 4 events	8455	11728	10285	28512	10368	9451
	5%	2%	5%	6%	5%	5%
grade 5 events	1230	6706	1443	6226	1681	1702
	0%	1%	0%	1%	0%	0%
grade 6 events	18882	116028	26195	136270	23671	23320
	11%	28%	14%	32%	12%	13%
grade 7 events	17665	49144	17372	36639	20156	17552
	11%	12%	9%	8%	10%	9%

2.2 Compared Parameters

Parameter	Planned	Actual	Parameter	Planned	Actual
Instrument	ACIS	ACIS	Obspar format version number	6	6
Detector	ACIS-456789	ACIS-456789	Obspar file type	PREDICTED	ACTUAL
Grating	NONE	NONE	Obspar update status	NONE	UPDATED
Data mode	FAINT	FAINT	On-chip summing requested	N	N
Observation mode	SECONDARY	SECONDARY	Subarray requested	NONE	NONE
Pointing RA	0	135.0232130268496	Alternating exposures requested	N	N
Pointing Dec	0	-14.01776437557656	Primary exposure time	3.2	3.2
Pointing Roll	0.0	289.0860294586169			
SIM focus pos (mm)	-0.684267	-0.6828225247311905			
SIM defocus (mm)	0	0.8505141146731063			
SIM translation stage pos (mm)	-190.132523	250.466033080201			
SIM translation stage offset (mm)	0	-0.01005468664627074			
Observation start time	101013369.40057	101013368.6321			
Observation start date	2001-03-15T03:16:09	2001-03-15T03:16:08			
Observation end time	101023877.700976	101023876.93251			
Observation end date	2001-03-15T06:11:18	2001-03-15T06:11:16			
Read mode	TIMED	TIMED			

2.3 Aspect

2.4 Star Slots

2.5 FID Slots

A Summary

A.1 Status

V&V Scientist	Jen Lauer
V&V Date (YYYY-MM-DD)	2006.11.16
V&V Edition	1
V&V Disposition and Status	OK
V&V Charge Time	5.55259506

A.2 Comments

The ACIS focal plane temperature was above calibration limits for the first 1.5 ksec of the observation