

V&V Reference Report

L2 ASCDS Version : 8.4.5

Observation 61700 - L2 Version 3
Chandra X-Ray Center

L2 Processing Date : Sep 14 2012

Contents

1	Front	2
2	OBI	3
2.1	OBI	3
2.1.1	Images	3
2.1.2	Bias	3
2.1.3	Parameters	4
2.1.4	Events	4
2.2	Compared Parameters	5
2.3	Star Slots	6
2.4	FID Slots	6
A	Summary	7
A.1	Status	7
A.2	Comments	7

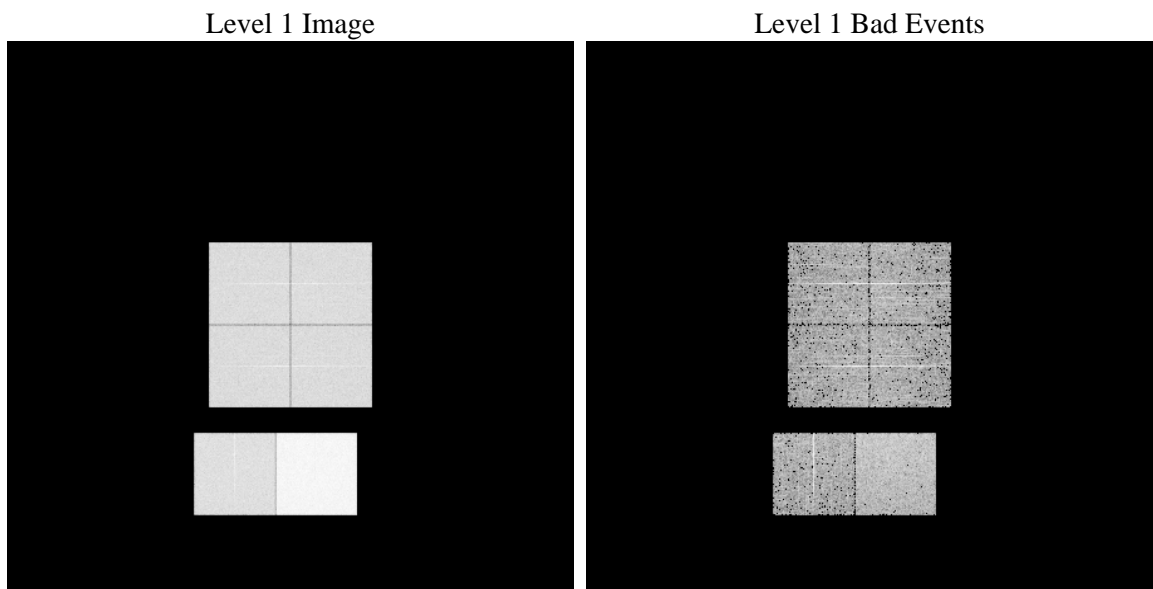
1 Front

seq_num	 	Sequence number
obs_id	61700	Observation id
title	ACIS-012367 diagnostics	Proposal title
observer	CHANDRA engineering request/realtime commanding	Principal investig
object	 	Source name
dtcycle	0	
cycle	P	events from which exps? Prim/Second/Both
ra_targ	0.0	Observer's specified target RA [deg]
dec_targ	0.0	Observer's specified target Dec [deg]
ra_nom	100.02089318573	Nominal RA [deg]
dec_nom	-28.021973484666	Nominal Dec [deg]
roll_nom	277.44358169305	Nominal Roll [deg]
revision	3	Processing version of data
ontime	6155.5570587218	Sum of GTIs [s]
livetime	6077.6116888128	Livetime [s]
ontime0	2477.0365966707	Sum of GTIs [s]
ontime1	2470.5542774498	Sum of GTIs [s]
ontime2	2384.1942961663	Sum of GTIs [s]
ontime3	2384.0303354859	Sum of GTIs [s]
ontime6	2650.000256598	Sum of GTIs [s]
ontime7	6155.5570587218	Sum of GTIs [s]
l2events	1224425	Number of level 2 events

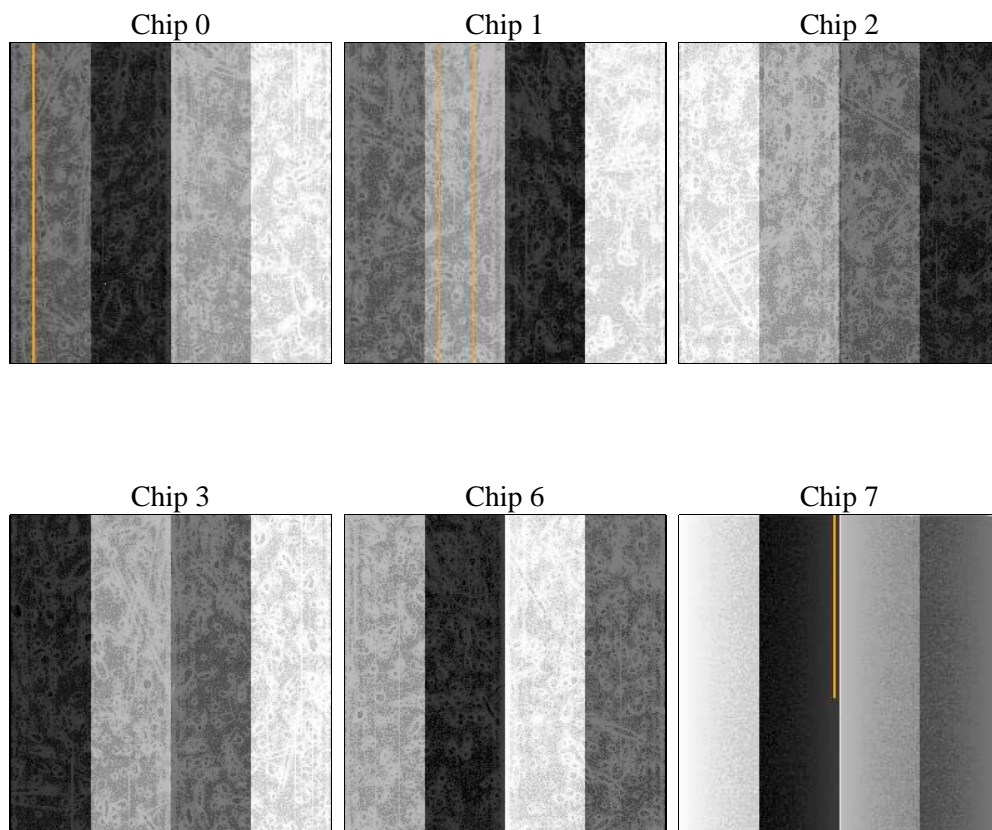
2 OBI

2.1 OBI

2.1.1 Images



2.1.2 Bias



2.1.3 Parameters

obi_num	0	Obi number	sched_exp_time	0.0	[s] Scheduled observation exposure time
ascdsver	8.4.5	Processing system revision	ontime	6155.5570587218	Sum of GTIs [s]
caldbver	4.5.1.1	 	ontime0	2477.0365966707	Sum of GTIs [s]
date	2012-09-14T08:39:17	Date and time of file creation	ontime1	2470.5542774498	Sum of GTIs [s]
revision	3	Processing version of data	ontime2	2384.1942961663	Sum of GTIs [s]
			ontime3	2384.0303354859	Sum of GTIs [s]
			ontime6	2650.000256598	Sum of GTIs [s]
			ontime7	6155.5570587218	Sum of GTIs [s]
			l1events	1411023	Number of level 1 events

2.1.4 Events

	ccd 0	ccd 1	ccd 2	ccd 3	ccd 6	ccd 7		ccd 0	ccd 1	ccd 2	ccd 3	ccd 6	ccd 7
level 1 events	186233	186853	182183	182252	209110	464392	grade 0 events	91774	91620	90218	90830	102474	109851
rejected events	19526	20701	19876	20216	20840	33834		49%	49%	49%	49%	49%	23%
rejected %	10%	11%	10%	11%	9%	7%	grade 1 events	495	485	470	547	517	285
								0%	0%	0%	0%	0%	0%
							grade 2 events	29802	29223	28714	28205	32676	95424
								16%	15%	15%	15%	15%	20%
							grade 3 events	10693	10618	10276	10231	11641	44175
								5%	5%	5%	5%	5%	9%
							grade 4 events	10410	10681	10318	10351	11639	43838
								5%	5%	5%	5%	5%	9%
							grade 5 events	1435	1522	1353	1423	1669	7258
								0%	0%	0%	0%	0%	1%
							grade 6 events	24028	24010	22781	22419	29840	137270
								12%	12%	12%	12%	14%	29%
							grade 7 events	17596	18694	18053	18246	18654	26291
								9%	10%	9%	10%	8%	5%

2.2 Compared Parameters

Parameter	Planned	Actual
Instrument	ACIS	ACIS
Detector	ACIS-012367	ACIS-012367
Grating	NONE	NONE
Data mode	FAINT	FAINT
Observation mode	SECONDARY	SECONDARY
[deg] Pointing RA	0	100.0208931857269
[deg] Pointing Dec	0	-28.02197348466611
[deg] Pointing Roll	0.0	277.4435816930476
[mm] SIM focus pos	-0.782348	-0.6828225247311905
[mm] SIM defocus	0	0.8505141146731063
[mm] SIM translation stage pos	-233.592463	250.466033080201
[mm] SIM translation stage offset	0	-0.01005468664627074
[s] Observation start time (MET)	101196348.307638	101196347.53918
Observation start date	2001-03-17T06:05:48	2001-03-17T06:05:47
[s] Observation end time (MET)	101211155.45821	101211154.68975
Observation end date	2001-03-17T10:12:35	2001-03-17T10:12:34
Read mode	TIMED	TIMED

Parameter	Planned	Actual
Obspar format version number	7	7
Obspar file type	PREDICTED	ACTUAL
Obspar update status	NONE	UPDATED
On-chip summing requested	N	N
Subarray requested	NONE	NONE
Alternating exposures requested	N	N
[s] Primary exposure time	3.2	3.2

2.3 Star Slots

2.4 FID Slots

A Summary

A.1 Status

V&V Scientist	Beth Sundheim
V&V Date (YYYY-MM-DD)	2012.09.18
V&V Edition	1
V&V Disposition and Status	OK
V&V Charge Time	6.1555570587218

A.2 Comments