

V&V Reference Report

L2 ASCDS Version : 7.6.9

Observation 61695 - L2 Version 001
Chandra X-Ray Center

L2 Processing Date : Nov 15 2006

Contents

1	Front	2
2	OBI	3
2.1	OBI	3
2.1.1	Images	3
2.1.2	Bias	3
2.1.3	Parameters	4
2.1.4	Events	4
2.2	Compared Parameters	5
2.3	Aspect	6
2.4	Star Slots	8
2.5	FID Slots	8
A	Summary	9
A.1	Status	9
A.2	Comments	9

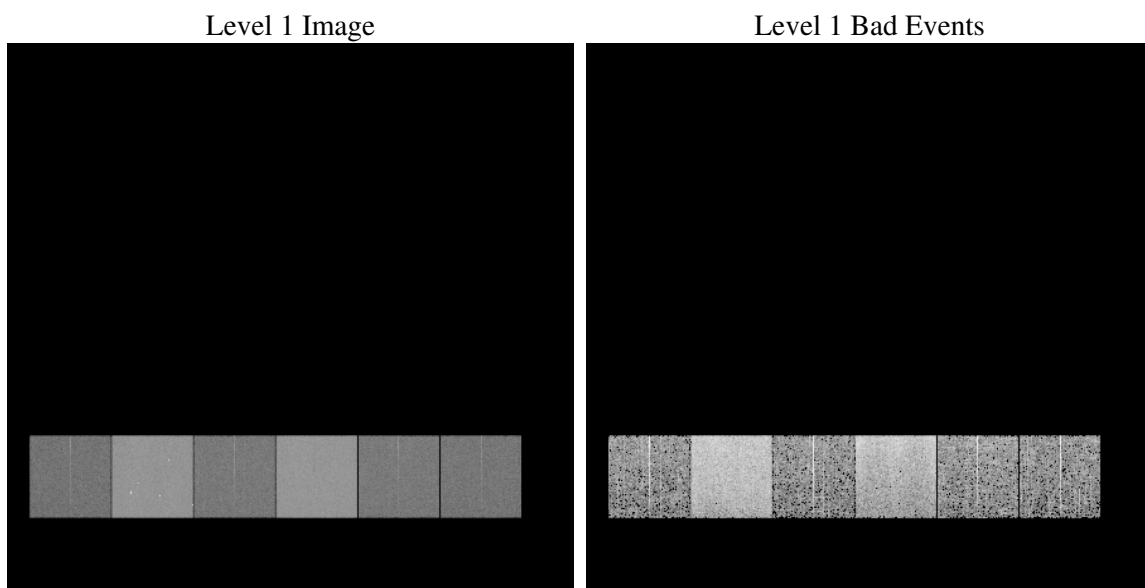
1 Front

seq_num	
obs_id	61695
title	ACIS-456789 diagnostics
observer	CHANDRA engineering request/realtime commanding
object	
dtcycle	0
cycle	P
ra_targ	0.0
dec_targ	0.0
ra_nom	299.99471963123
dec_nom	65.028588059109
roll_nom	61.799827254164
revision	2
ontime	5058.4649441987
livetime	4994.4116152334
ontime4	2034.7313458622
ontime5	5444.1804725528
ontime6	2196.7420462966
ontime7	5058.4649441987
ontime8	2242.1986263394
ontime9	2118.8340562284
l2events	1201110

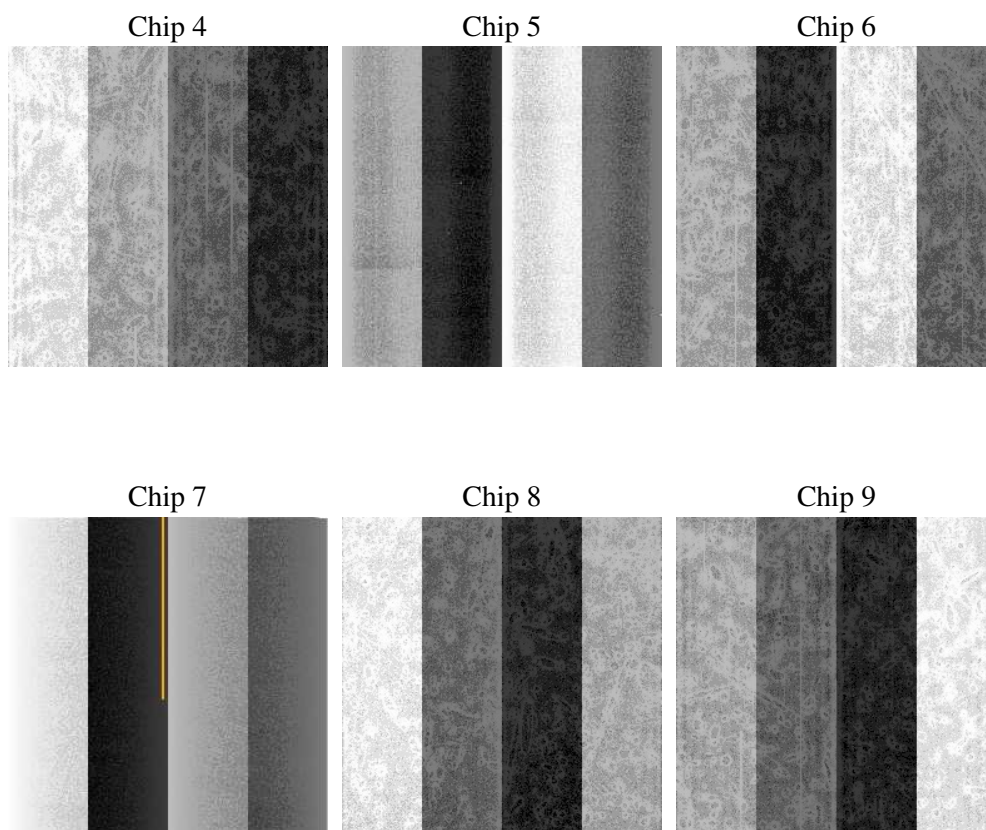
2 OBI

2.1 OBI

2.1.1 Images



2.1.2 Bias



2.1.3 Parameters

obi_num	0
ascdsver	7.6.9
caldsver	3.2.4
date	2006-11-16T02:46:09
revision	2

sched_exp_time	0.0
ontime	5059.2279589325
ontime4	2035.3712406009
ontime5	5444.9024472833
ontime6	2197.4229810387
ontime7	5059.2279589325
ontime8	2242.7974810749
ontime9	2119.6381109655
l1events	1415342

2.1.4 Events

	ccd 4	ccd 5	ccd 6	ccd 7	ccd 8	ccd 9
level 1 events	150466	371312	174241	380237	177815	161271
rejected events	17805	48495	17572	37883	19221	17394
rejected %	11%	13%	10%	9%	10%	10%

	ccd 4	ccd 5	ccd 6	ccd 7	ccd 8	ccd 9
grade 0 events	75062	44227	85884	66287	87372	78687
	49%	11%	49%	17%	49%	48%
grade 1 events	367	135	424	154	428	410
	0%	0%	0%	0%	0%	0%
grade 2 events	23371	152077	27066	100991	27825	25377
	15%	40%	15%	26%	15%	15%
grade 3 events	8348	11757	9604	26688	10143	8964
	5%	3%	5%	7%	5%	5%
grade 4 events	8096	11458	9673	26304	9863	8874
	5%	3%	5%	6%	5%	5%
grade 5 events	1199	5944	1332	5484	1558	1315
	0%	1%	0%	1%	0%	0%
grade 6 events	17784	103298	24442	122084	23391	21975
	11%	27%	14%	32%	13%	13%
grade 7 events	16239	42416	15816	32245	17235	15669
	10%	11%	9%	8%	9%	9%

2.2 Compared Parameters

Parameter	Planned	Actual	Parameter	Planned	Actual
Instrument	ACIS	ACIS	Obspar format version number	6	6
Detector	ACIS-456789	ACIS-456789	Obspar file type	PREDICTED	ACTUAL
Grating	NONE	NONE	Obspar update status	NONE	UPDATED
Data mode	FAINT	FAINT	On-chip summing requested	N	N
Observation mode	SECONDARY	SECONDARY	Subarray requested	NONE	NONE
Pointing RA	0	299.9947196312323	Alternating exposures requested	N	N
Pointing Dec	0	65.02858805910915	Primary exposure time	3.2	3.2
Pointing Roll	0.0	61.79982725416443			
SIM focus pos (mm)	-0.684267	-1.428180813131781			
SIM defocus (mm)	0	0.1051558262725154			
SIM translation stage pos (mm)	-190.132523	250.466033080201			
SIM translation stage offset (mm)	0	-0.01005468664627074			
Observation start time	101426110.266511	101426109.49806			
Observation start date	2001-03-19T21:55:10	2001-03-19T21:55:09			
Observation end time	101438166.316977	101438165.54853			
Observation end date	2001-03-20T01:16:06	2001-03-20T01:16:05			
Read mode	TIMED	TIMED			

2.3 Aspect

2.4 Star Slots

2.5 FID Slots

A Summary

A.1 Status

V&V Scientist	Jen Lauer
V&V Date (YYYY-MM-DD)	2006.11.16
V&V Edition	1
V&V Disposition and Status	OK
V&V Charge Time	5.05846494

A.2 Comments