

V&V Reference Report

L2 ASCDS Version : 8.4.5

Observation 61689 - L2 Version 3
Chandra X-Ray Center

L2 Processing Date : Sep 14 2012

Contents

| | | |
|----------|-------------------------------|----------|
| 1 | Front | 2 |
| 2 | OBI | 3 |
| 2.1 | OBI | 3 |
| 2.1.1 | Images | 3 |
| 2.1.2 | Bias | 3 |
| 2.1.3 | Parameters | 4 |
| 2.1.4 | Events | 4 |
| 2.2 | Compared Parameters | 5 |
| 2.3 | Star Slots | 6 |
| 2.4 | FID Slots | 6 |
| A | Summary | 7 |
| A.1 | Status | 7 |
| A.2 | Comments | 7 |

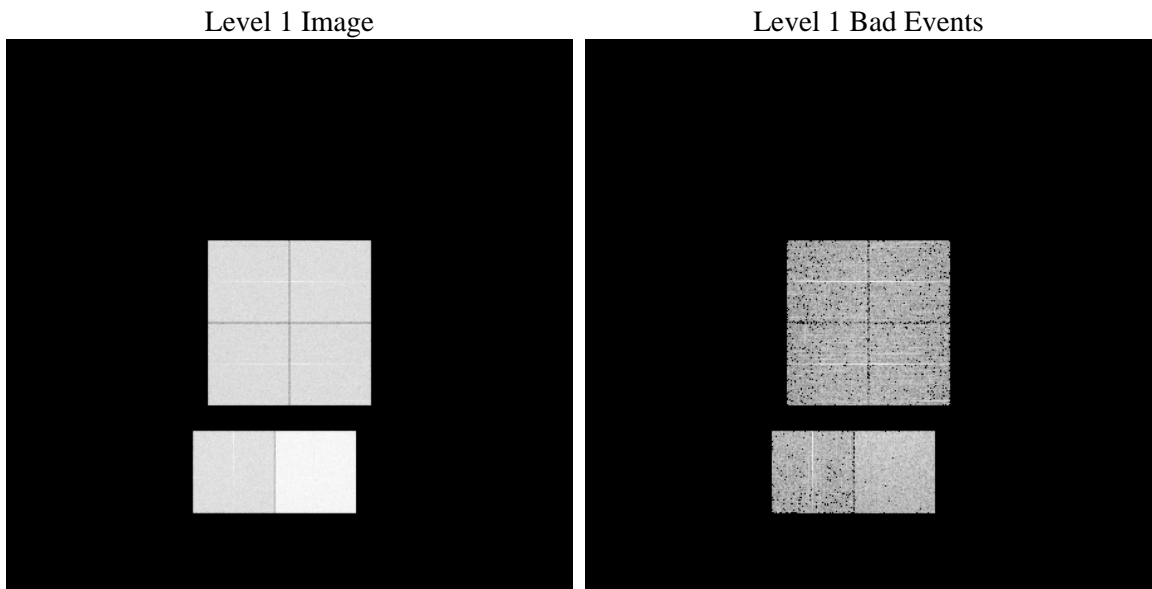
1 Front

| | | |
|----------|---|---|
| seq_num | | Sequence number |
| obs_id | 61689 | Observation id |
| title | ACIS-012367 diagnostics | Proposal title |
| observer | CHANDRA engineering request/realtime commanding | Principal investig |
| object | | Source name |
| dtcycle | 0 | |
| cycle | P | events from which exps? Prim/Second/Both |
| ra_targ | 0.0 | Observer's specified target RA [deg] |
| dec_targ | 0.0 | Observer's specified target Dec [deg] |
| ra_nom | 254.97688317954 | Nominal RA [deg] |
| dec_nom | 30.020574087826 | Nominal Dec [deg] |
| roll_nom | 101.57903572574 | Nominal Roll [deg] |
| revision | 3 | Processing version of data |
| ontime | 6125.4424728751 | Sum of GTIs [s] |
| livetime | 6047.8784319849 | Livetime [s] |
| ontime0 | 2443.7416612208 | Sum of GTIs [s] |
| ontime1 | 2524.7673621178 | Sum of GTIs [s] |
| ontime2 | 2356.2337409705 | Sum of GTIs [s] |
| ontime3 | 2388.6441010088 | Sum of GTIs [s] |
| ontime6 | 2670.6139921099 | Sum of GTIs [s] |
| ontime7 | 6125.4424728751 | Sum of GTIs [s] |
| l2events | 1217887 | Number of level 2 events |

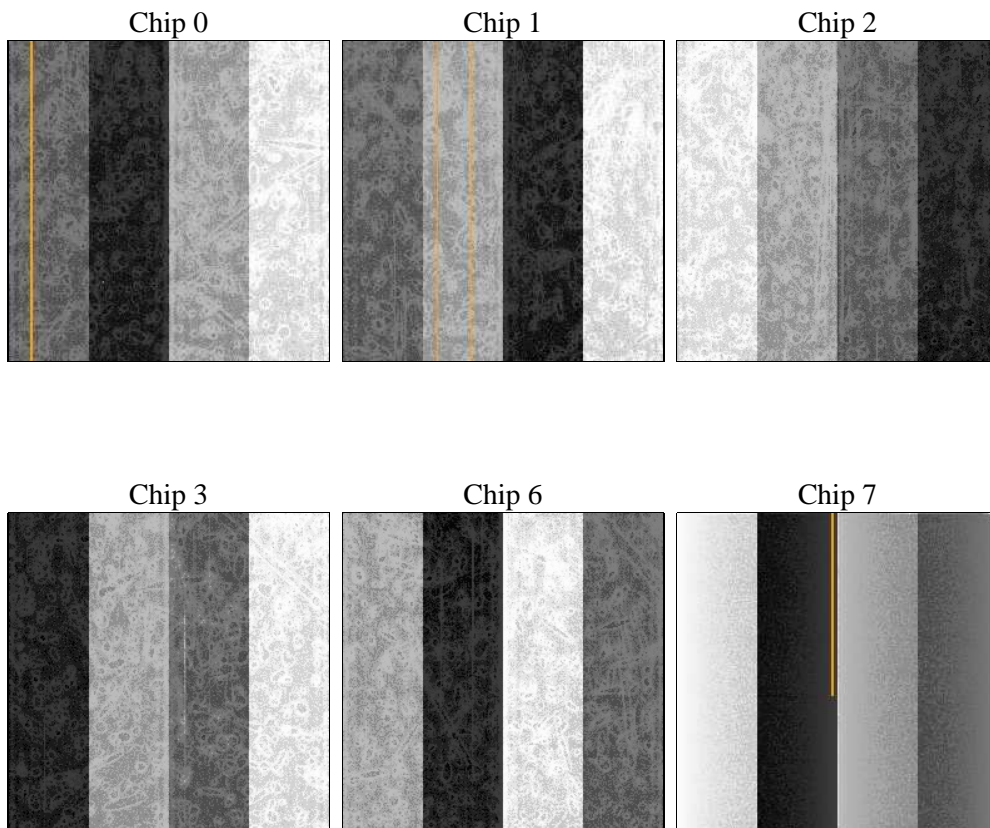
2 OBI

2.1 OBI

2.1.1 Images



2.1.2 Bias



2.1.3 Parameters

| | | | | | |
|----------|---------------------|--------------------------------|----------------|-----------------|---|
| obi_num | 0 | Obi number | sched_exp_time | 0.0 | [s] Scheduled observation exposure time |
| ascdsver | 8.4.5 | Processing system revision | ontime | 6125.4424728751 | Sum of GTIs [s] |
| caldsver | 4.5.1.1 | | ontime0 | 2443.7416612208 | Sum of GTIs [s] |
| date | 2012-09-14T13:53:57 | Date and time of file creation | ontime1 | 2524.7673621178 | Sum of GTIs [s] |
| revision | 3 | Processing version of data | ontime2 | 2356.2337409705 | Sum of GTIs [s] |
| | | | ontime3 | 2388.6441010088 | Sum of GTIs [s] |
| | | | ontime6 | 2670.6139921099 | Sum of GTIs [s] |
| | | | ontime7 | 6125.4424728751 | Sum of GTIs [s] |
| | | | l1events | 1402959 | Number of level 1 events |

2.1.4 Events

| | ccd 0 | ccd 1 | ccd 2 | ccd 3 | ccd 6 | ccd 7 | | ccd 0 | ccd 1 | ccd 2 | ccd 3 | ccd 6 | ccd 7 |
|-----------------|--------|--------|--------|--------|--------|--------|----------------|-------|-------|-------|-------|--------|--------|
| level 1 events | 182814 | 188556 | 179165 | 182888 | 210081 | 459455 | grade 0 events | 90679 | 92978 | 88699 | 90710 | 102985 | 109102 |
| rejected events | 18997 | 19602 | 19795 | 20777 | 21236 | 33131 | | 49% | 49% | 49% | 49% | 49% | 23% |
| rejected % | 10% | 10% | 11% | 11% | 10% | 7% | grade 1 events | 456 | 494 | 492 | 486 | 522 | 324 |
| | | | | | | | | 0% | 0% | 0% | 0% | 0% | 0% |
| | | | | | | | grade 2 events | 28701 | 29637 | 28145 | 28334 | 32983 | 94629 |
| | | | | | | | | 15% | 15% | 15% | 15% | 15% | 20% |
| | | | | | | | grade 3 events | 10320 | 10792 | 9977 | 10067 | 11623 | 44036 |
| | | | | | | | | 5% | 5% | 5% | 5% | 5% | 9% |
| | | | | | | | grade 4 events | 10442 | 10992 | 9980 | 10330 | 11684 | 43375 |
| | | | | | | | | 5% | 5% | 5% | 5% | 5% | 9% |
| | | | | | | | grade 5 events | 1395 | 1445 | 1299 | 1430 | 1655 | 7101 |
| | | | | | | | | 0% | 0% | 0% | 0% | 0% | 1% |
| | | | | | | | grade 6 events | 23675 | 24555 | 22569 | 22670 | 29570 | 135182 |
| | | | | | | | | 12% | 13% | 12% | 12% | 14% | 29% |
| | | | | | | | grade 7 events | 17146 | 17663 | 18004 | 18861 | 19059 | 25706 |
| | | | | | | | | 9% | 9% | 10% | 10% | 9% | 5% |

2.2 Compared Parameters

| Parameter | Planned | Actual | Parameter | Planned | Actual |
|-----------------------------------|---------------------|----------------------|---------------------------------|-----------|---------|
| Instrument | ACIS | ACIS | Obspar format version number | 7 | 7 |
| Detector | ACIS-012367 | ACIS-012367 | Obspar file type | PREDICTED | ACTUAL |
| Grating | NONE | NONE | Obspar update status | NONE | UPDATED |
| Data mode | FAINT | FAINT | On-chip summing requested | N | N |
| Observation mode | SECONDARY | SECONDARY | Subarray requested | NONE | NONE |
| [deg] Pointing RA | 0 | 254.9768831795393 | Alternating exposures requested | N | N |
| [deg] Pointing Dec | 0 | 30.02057408782627 | [s] Primary exposure time | 0.000000 | 3.2 |
| [deg] Pointing Roll | 0.0 | 101.5790357257416 | | | |
| [mm] SIM focus pos | -0.782348 | -0.6828225247311905 | | | |
| [mm] SIM defocus | 0 | 0.8505141146731063 | | | |
| [mm] SIM translation stage pos | -233.592463 | 250.466033080201 | | | |
| [mm] SIM translation stage offset | 0 | -0.01005468664627074 | | | |
| [s] Observation start time (MET) | 101881718.684 | 101881717.91571 | | | |
| Observation start date | 2001-03-25T04:28:39 | 2001-03-25T04:28:37 | | | |
| [s] Observation end time (MET) | 101892880.935 | 101892880.16614 | | | |
| Observation end date | 2001-03-25T07:34:41 | 2001-03-25T07:34:40 | | | |
| Read mode | TIMED | TIMED | | | |

2.3 Star Slots

2.4 FID Slots

A Summary

A.1 Status

| | |
|----------------------------|-----------------|
| V&V Scientist | Beth Sundheim |
| V&V Date (YYYY-MM-DD) | 2012.09.18 |
| V&V Edition | 1 |
| V&V Disposition and Status | OK |
| V&V Charge Time | 6.1254424728751 |

A.2 Comments