

V&V Reference Report

L2 ASCDS Version : 7.6.9

Observation 61685 - L2 Version 001
Chandra X-Ray Center

L2 Processing Date : Nov 15 2006

Contents

1	Front	2
2	OBI	3
2.1	OBI	3
2.1.1	Images	3
2.1.2	Bias	3
2.1.3	Parameters	4
2.1.4	Events	4
2.2	Compared Parameters	5
2.3	Aspect	6
2.4	Star Slots	8
2.5	FID Slots	8
A	Summary	9
A.1	Status	9
A.2	Comments	9

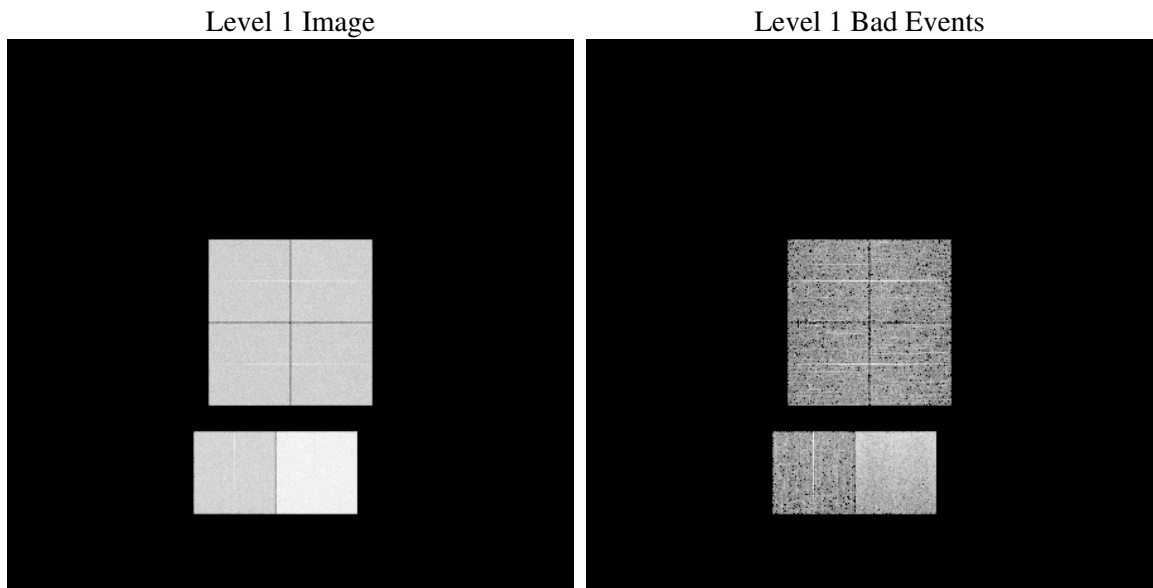
1 Front

seq_num	
obs_id	61685
title	ACIS-012367 diagnostics
observer	CHANDRA engineering request/realtime commanding
object	
dtcycle	0
cycle	P
ra_targ	0.0
dec_targ	0.0
ra_nom	90.015056317129
dec_nom	-32.025745342728
roll_nom	263.71531992428
revision	2
ontime	6607.3375016302
livetime	6523.6714157235
ontime0	2709.9978007078
ontime1	2794.3057605326
ontime2	2619.3308006972
ontime3	2641.8543890417
ontime6	2907.8234923631
ontime7	6607.3375016302
l2events	1320962

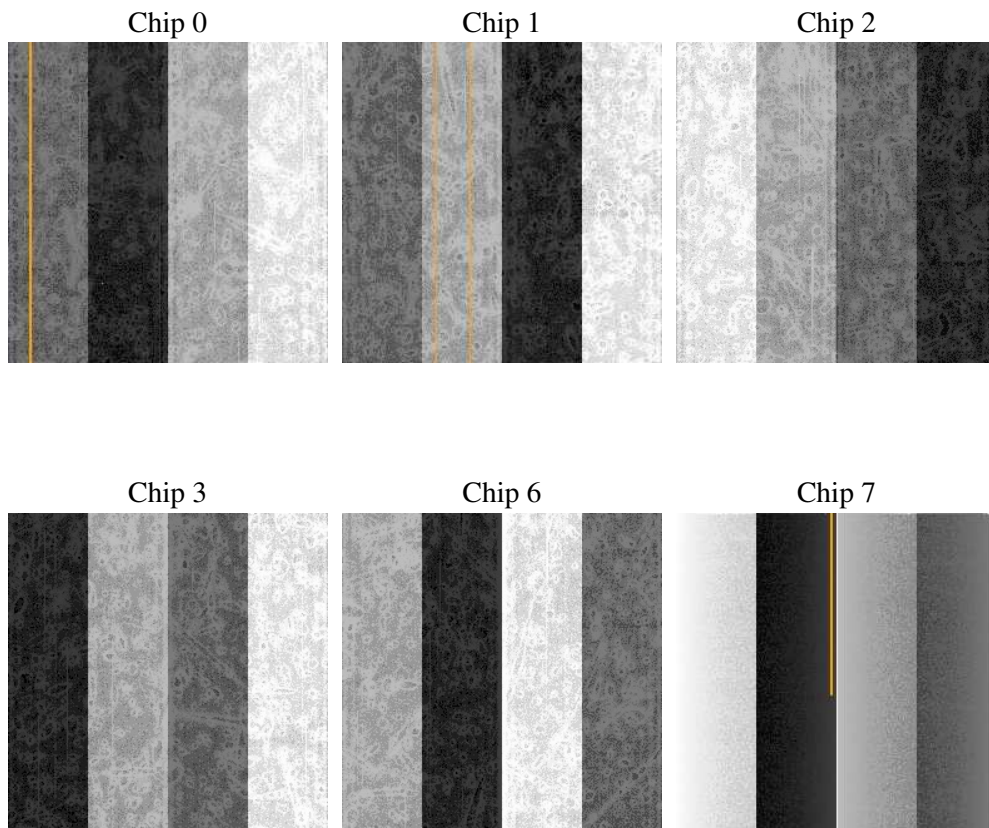
2 OBI

2.1 OBI

2.1.1 Images



2.1.2 Bias



2.1.3 Parameters

obi_num	0
ascdsver	7.6.9
caldbver	3.2.4
date	2006-11-16T03:11:38
revision	2

sched_exp_time	0.0
ontime	6618.1366409659
ontime0	2719.2298014611
ontime1	2800.2556813061
ontime2	2628.4806616157
ontime3	2647.9274298102
ontime6	2913.69133313
ontime7	6618.1366409659
l1events	1534799

2.1.4 Events

	ccd 0	ccd 1	ccd 2	ccd 3	ccd 6	ccd 7
level 1 events	202046	209324	199346	202043	228740	493300
rejected events	20503	20955	21249	22154	22741	49939
rejected %	10%	10%	10%	10%	9%	10%

	ccd 0	ccd 1	ccd 2	ccd 3	ccd 6	ccd 7
grade 0 events	100894	104538	99886	100785	112565	82998
	49%	49%	50%	49%	49%	16%
grade 1 events	527	527	551	577	530	210
	0%	0%	0%	0%	0%	0%
grade 2 events	31805	32846	31137	31580	35669	132558
	15%	15%	15%	15%	15%	26%
grade 3 events	11584	12000	11084	11397	12609	33665
	5%	5%	5%	5%	5%	6%
grade 4 events	11445	11810	11075	11338	12724	33072
	5%	5%	5%	5%	5%	6%
grade 5 events	1506	1552	1485	1526	1855	7149
	0%	0%	0%	0%	0%	1%
grade 6 events	26459	27616	25562	25249	32869	161755
	13%	13%	12%	12%	14%	32%
grade 7 events	17826	18435	18566	19591	19919	41893
	8%	8%	9%	9%	8%	8%

2.2 Compared Parameters

Parameter	Planned	Actual	Parameter	Planned	Actual
Instrument	ACIS	ACIS	Obspar format version number	6	6
Detector	ACIS-012367	ACIS-012367	Obspar file type	PREDICTED	ACTUAL
Grating	NONE	NONE	Obspar update status	NONE	UPDATED
Data mode	FAINT	FAINT	On-chip summing requested	N	N
Observation mode	SECONDARY	SECONDARY	Subarray requested	NONE	NONE
Pointing RA	0	90.01505631712928	Alternating exposures requested	N	N
Pointing Dec	0	-32.02574534272795	Primary exposure time	0.000000	3.2
Pointing Roll	0.0	263.7153199242761			
SIM focus pos (mm)	-0.782348	-0.6828225247311905			
SIM defocus (mm)	0	0.8505141146731063			
SIM translation stage pos (mm)	-233.592463	250.466033080201			
SIM translation stage offset (mm)	0	-0.01005468664627074			
Observation start time	102154985.745	102154984.9763			
Observation start date	2001-03-28T08:23:06	2001-03-28T08:23:04			
Observation end time	102165496.095	102165495.32671			
Observation end date	2001-03-28T11:18:16	2001-03-28T11:18:15			
Read mode	TIMED	TIMED			

2.3 Aspect

2.4 Star Slots

2.5 FID Slots

A Summary

A.1 Status

V&V Scientist	Jen Lauer
V&V Date (YYYY-MM-DD)	2006.11.16
V&V Edition	1
V&V Disposition and Status	OK
V&V Charge Time	6.6073375

A.2 Comments