

V&V Reference Report

L2 ASCDS Version : 7.6.9

Observation 61657 - L2 Version 001
Chandra X-Ray Center

L2 Processing Date : Nov 29 2006

Contents

1	Front	2
2	OBI	3
2.1	OBI	3
2.1.1	Images	3
2.1.2	Bias	3
2.1.3	Parameters	4
2.1.4	Events	4
2.2	Compared Parameters	5
2.3	Aspect	6
2.4	Star Slots	8
2.5	FID Slots	8
A	Summary	9
A.1	Status	9
A.2	Comments	9

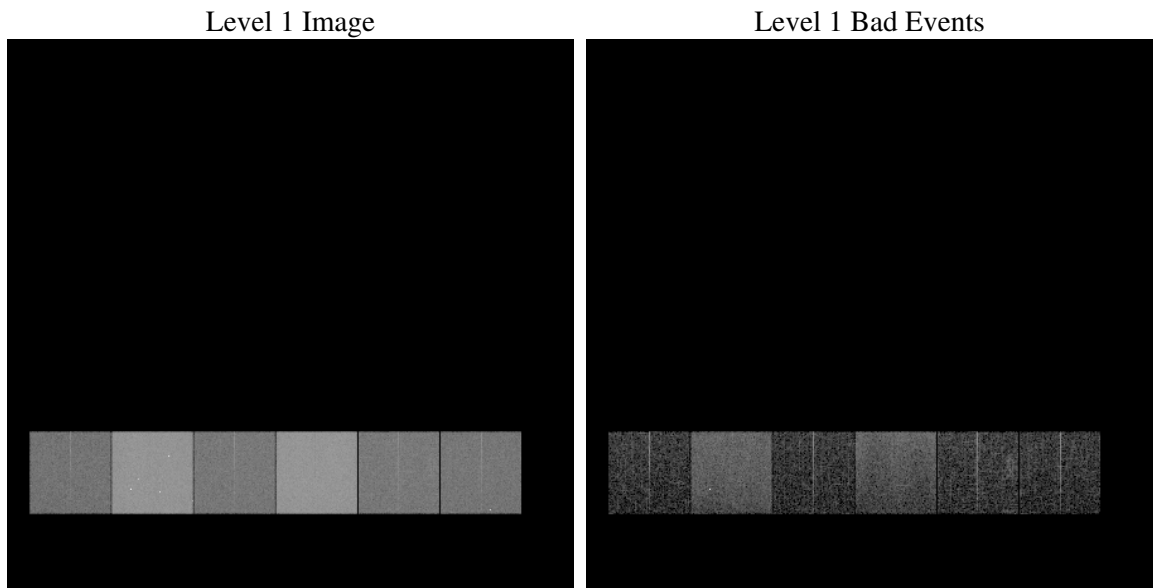
1 Front

seq_num	
obs_id	61657
title	ACIS-456789 diagnostics
observer	CHANDRA engineering request/realtime commanding
object	
dtcycle	0
cycle	P
ra_targ	0.0
dec_targ	0.0
ra_nom	91.001927780011
dec_nom	-30.02861590363
roll_nom	240.66373503288
revision	2
ontime	5243.743950054
livetime	5177.3445067549
ontime4	2077.2846029699
ontime5	5606.7315663248
ontime6	2243.967182979
ontime7	5243.743950054
ontime8	2266.7364930958
ontime9	2219.8904423118
l2events	1211625

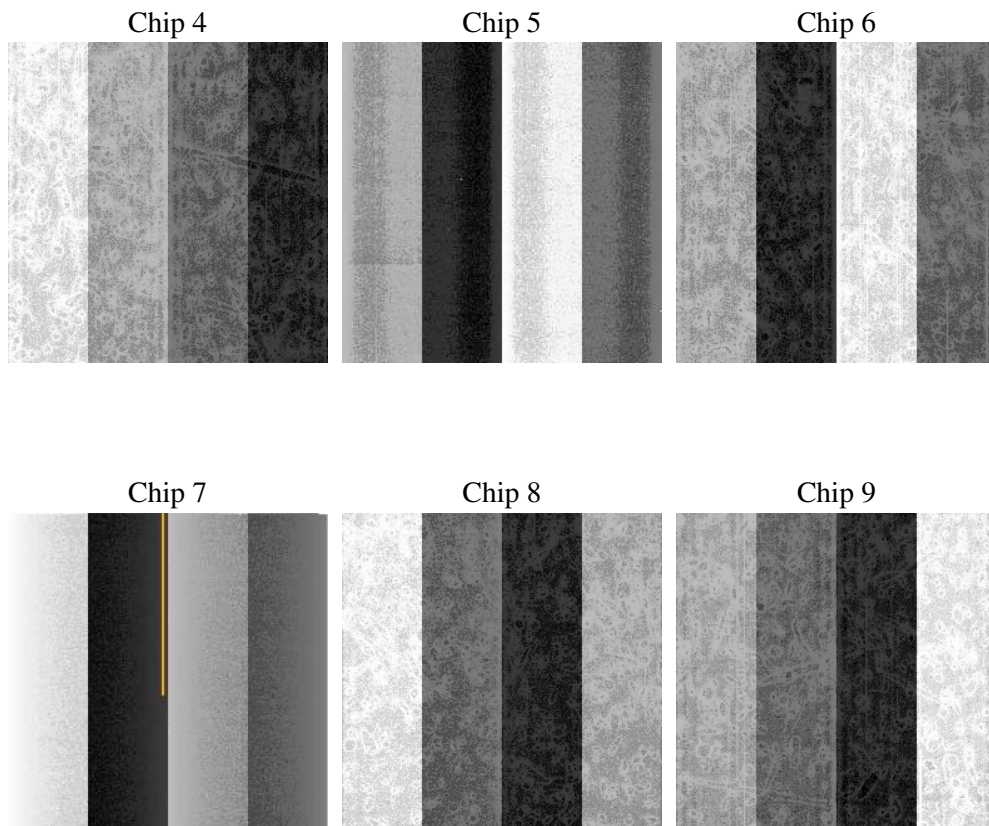
2 OBI

2.1 OBI

2.1.1 Images



2.1.2 Bias



2.1.3 Parameters

obi_num	3
ascdsver	7.6.9
caldsver	3.2.4
date	2006-11-29T22:56:03
revision	2

sched_exp_time	0.0
ontime	5247.2049081773
ontime4	2080.7455610931
ontime5	5610.192524448
ontime6	2246.0386006683
ontime7	5247.2049081773
ontime8	2268.7258307785
ontime9	2223.351400435
l1events	1430804

2.1.4 Events

	ccd 4	ccd 5	ccd 6	ccd 7	ccd 8	ccd 9
level 1 events	151150	377852	174145	384416	178372	164869
rejected events	18179	50211	17677	38647	21069	17689
rejected %	12%	13%	10%	10%	11%	10%

	ccd 4	ccd 5	ccd 6	ccd 7	ccd 8	ccd 9
grade 0 events	75256	46265	85655	66290	86681	80405
	49%	12%	49%	17%	48%	48%
grade 1 events	402	1109	392	163	453	395
	0%	0%	0%	0%	0%	0%
grade 2 events	23479	153626	27171	102706	28002	26648
	15%	40%	15%	26%	15%	16%
grade 3 events	8284	12464	9773	27121	9980	9053
	5%	3%	5%	7%	5%	5%
grade 4 events	8207	12241	9403	26214	9808	8989
	5%	3%	5%	6%	5%	5%
grade 5 events	1224	5992	1434	5584	1561	1445
	0%	1%	0%	1%	0%	0%
grade 6 events	17950	103259	24661	123652	23086	22289
	11%	27%	14%	32%	12%	13%
grade 7 events	16348	42896	15656	32686	18801	15645
	10%	11%	8%	8%	10%	9%

2.2 Compared Parameters

Parameter	Planned	Actual	Parameter	Planned	Actual
Instrument	ACIS	ACIS	Obspar format version number	6	6
Detector	ACIS-456789	ACIS-456789	Obspar file type	PREDICTED	ACTUAL
Grating	NONE	NONE	Obspar update status	NONE	UPDATED
Data mode	FAINT	FAINT	On-chip summing requested	N	N
Observation mode	SECONDARY	SECONDARY	Subarray requested	NONE	NONE
Pointing RA	0	91.00192778001141	Alternating exposures requested	N	N
Pointing Dec	0	-30.02861590363027	Primary exposure time	0.000000	3.2
Pointing Roll	0.0	240.6637350328783			
SIM focus pos (mm)	-0.684267	-0.6828225247311905			
SIM defocus (mm)	0	0.8505141146731063			
SIM translation stage pos (mm)	-190.132523	250.466033080201			
SIM translation stage offset (mm)	0	-0.01005468664627074			
Observation start time	104624922.19	104624921.42201			
Observation start date	2001-04-25T22:28:42	2001-04-25T22:28:41			
Observation end time	104670952.892	104670952.12379			
Observation end date	2001-04-26T11:15:53	2001-04-26T11:15:52			
Read mode	TIMED	TIMED			

2.3 Aspect

2.4 Star Slots

2.5 FID Slots

A Summary

A.1 Status

V&V Scientist	Beth Sundheim
V&V Date (YYYY-MM-DD)	2006.11.30
V&V Edition	1
V&V Disposition and Status	OK
V&V Charge Time	5.24374395

A.2 Comments