

V&V Reference Report

L2 ASCDS Version : 7.6.9

Observation 61656 - L2 Version 001
Chandra X-Ray Center

L2 Processing Date : Nov 29 2006

Contents

1	Front	2
2	OBI	3
2.1	OBI	3
2.1.1	Images	3
2.1.2	Bias	3
2.1.3	Parameters	4
2.1.4	Events	4
2.2	Compared Parameters	5
2.3	Aspect	6
2.4	Star Slots	8
2.5	FID Slots	8
A	Summary	9
A.1	Status	9
A.2	Comments	9

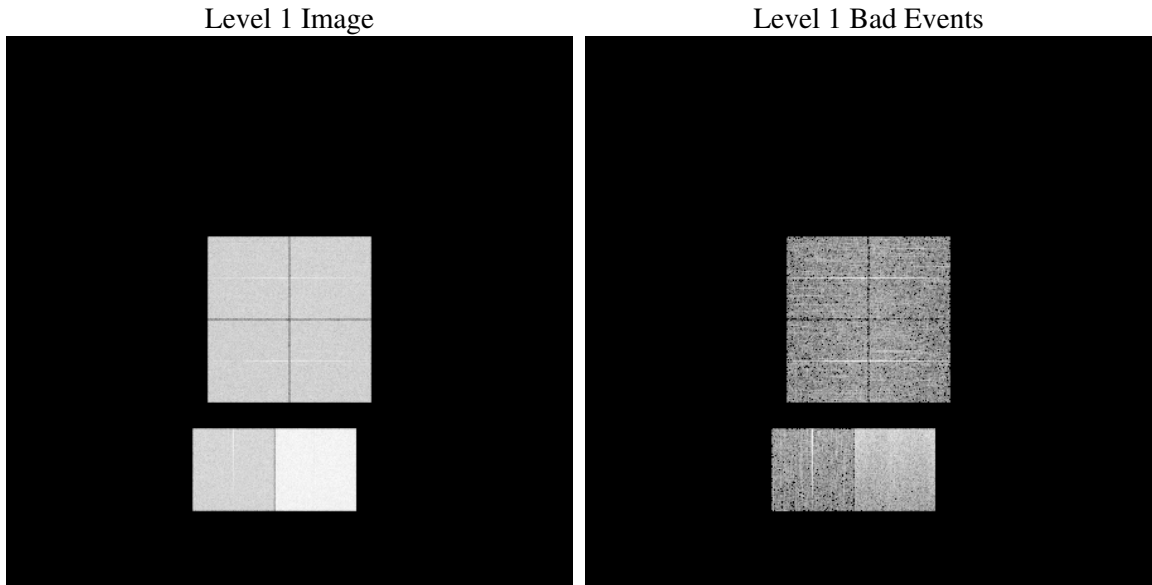
1 Front

seq_num	
obs_id	61656
title	ACIS-012367 diagnostics
observer	CHANDRA engineering request/realtime commanding
object	
dtcycle	0
cycle	P
ra_targ	0.0
dec_targ	0.0
ra_nom	91.001618840377
dec_nom	-30.02861267788
roll_nom	240.22106397012
revision	2
ontime	6899.4504226744
livetime	6812.0854270722
ontime0	2802.8888620883
ontime1	2880.7143535018
ontime2	2692.7759214044
ontime3	2725.0219917148
ontime6	2971.5455630571
ontime7	6899.4504226744
l2events	1331904

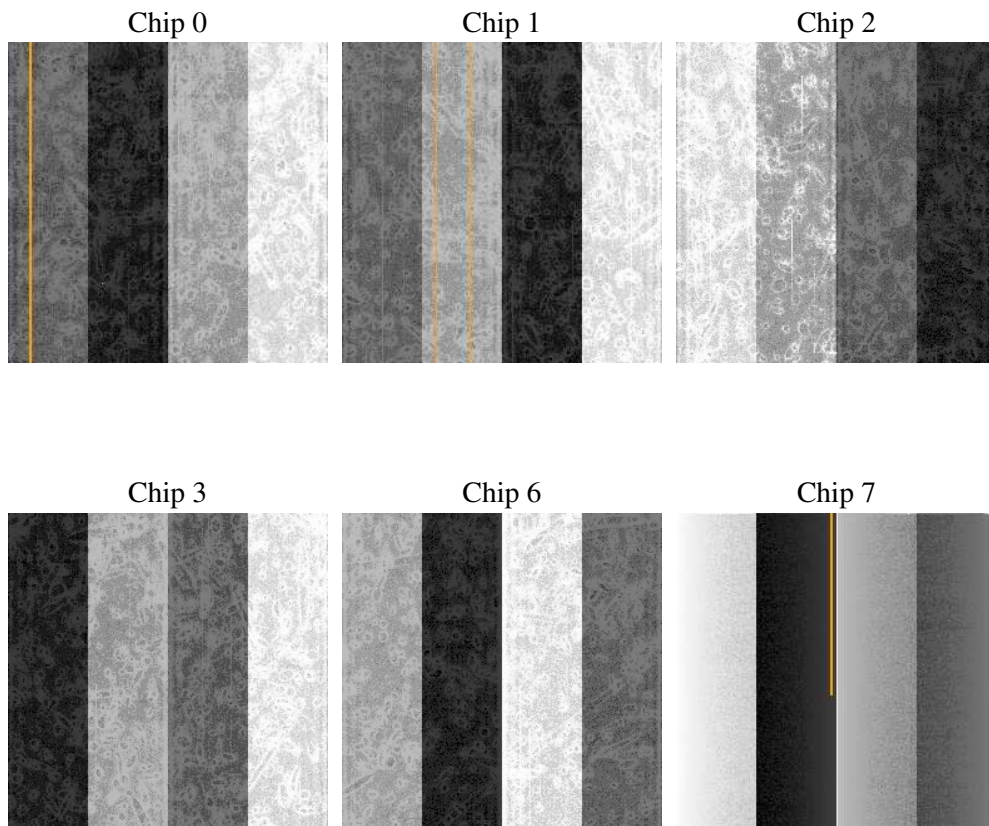
2 OBI

2.1 OBI

2.1.1 Images



2.1.2 Bias



2.1.3 Parameters

obi_num	3
ascdsver	7.6.9
caldbver	3.2.4
date	2006-11-29T23:04:54
revision	2

sched_exp_time	0.0
ontime	6900.0993716866
ontime0	2803.4967710972
ontime1	2881.2812225223
ontime2	2693.3017504215
ontime3	2725.7119807303
ontime6	2972.0303520709
ontime7	6900.0993716866
l1events	1548933

2.1.4 Events

	ccd 0	ccd 1	ccd 2	ccd 3	ccd 6	ccd 7
level 1 events	204176	209362	199431	202896	228358	504710
rejected events	21386	21438	21306	22130	23407	50854
rejected %	10%	10%	10%	10%	10%	10%

	ccd 0	ccd 1	ccd 2	ccd 3	ccd 6	ccd 7
grade 0 events	101093	103955	99059	101113	111657	86558
	49%	49%	49%	49%	48%	17%
grade 1 events	549	538	531	522	516	228
	0%	0%	0%	0%	0%	0%
grade 2 events	31987	33145	31006	31603	35648	133848
	15%	15%	15%	15%	15%	26%
grade 3 events	11488	11757	11219	11557	12545	35203
	5%	5%	5%	5%	5%	6%
grade 4 events	11532	11785	11241	11500	12515	34863
	5%	5%	5%	5%	5%	6%
grade 5 events	1515	1592	1462	1502	1850	7340
	0%	0%	0%	0%	0%	1%
grade 6 events	26690	27282	25600	24993	32586	163384
	13%	13%	12%	12%	14%	32%
grade 7 events	19322	19308	19313	20106	21041	43286
	9%	9%	9%	9%	9%	8%

2.2 Compared Parameters

Parameter	Planned	Actual	Parameter	Planned	Actual
Instrument	ACIS	ACIS	Obspar format version number	6	6
Detector	ACIS-012367	ACIS-012367	Obspar file type	PREDICTED	ACTUAL
Grating	NONE	NONE	Obspar update status	NONE	UPDATED
Data mode	FAINT	FAINT	On-chip summing requested	N	N
Observation mode	SECONDARY	SECONDARY	Subarray requested	NONE	NONE
Pointing RA	0	91.00161884037723	Alternating exposures requested	N	N
Pointing Dec	0	-30.02861267788022	Primary exposure time	0.000000	3.2
Pointing Roll	0.0	240.2210639701216			
SIM focus pos (mm)	-0.782348	-0.6828225247311905			
SIM defocus (mm)	0	0.8505141146731063			
SIM translation stage pos (mm)	-233.592463	250.466033080201			
SIM translation stage offset (mm)	0	-0.01005468664627074			
Observation start time	104670952.892	104670952.12379			
Observation start date	2001-04-26T11:15:53	2001-04-26T11:15:52			
Observation end time	104681463.243	104681462.4742			
Observation end date	2001-04-26T14:11:03	2001-04-26T14:11:02			
Read mode	TIMED	TIMED			

2.3 Aspect

2.4 Star Slots

2.5 FID Slots

A Summary

A.1 Status

V&V Scientist	Beth Sundheim
V&V Date (YYYY-MM-DD)	2006.11.30
V&V Edition	1
V&V Disposition and Status	OK
V&V Charge Time	6.89945042

A.2 Comments