

# V&V Reference Report

## L2 ASCDS Version : 8.4.5

Observation 61618 - L2 Version 3  
Chandra X-Ray Center

L2 Processing Date : Sep 16 2012

## Contents

<b>1</b>	<b>Front</b>	<b>2</b>
<b>2</b>	<b>OBI</b>	<b>3</b>
2.1	OBI . . . . .	3
2.1.1	Images . . . . .	3
2.1.2	Bias . . . . .	3
2.1.3	Parameters . . . . .	4
2.1.4	Events . . . . .	4
2.2	Compared Parameters . . . . .	5
2.3	Star Slots . . . . .	6
2.4	FID Slots . . . . .	6
<b>A</b>	<b>Summary</b>	<b>7</b>
A.1	Status . . . . .	7
A.2	Comments . . . . .	7

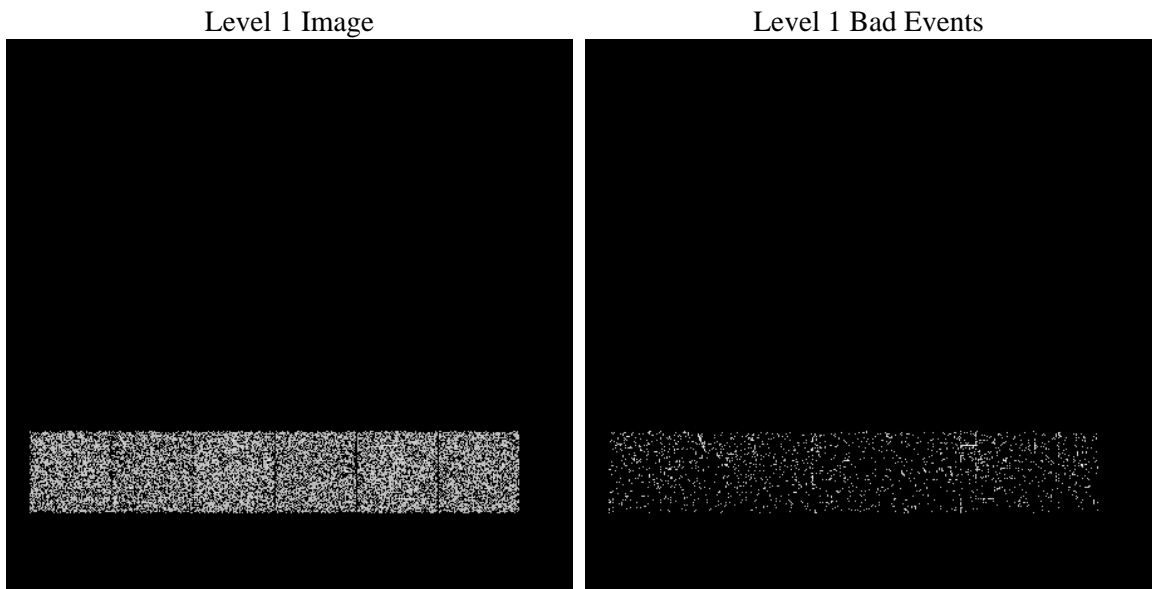
# 1 Front

seq_num	&#160	Sequence number
obs_id	61618	Observation id
title	ACIS-456789 diagnostics	Proposal title
observer	CHANDRA engineering request/realtime commanding	Principal investig
object	&#160	Source name
dtcycle	0	&#160
cycle	P	events from which exps? Prim/Second/Both
ra_targ	0.0	Observer's specified target RA [deg]
dec_targ	0.0	Observer's specified target Dec [deg]
ra_nom	349.97505379081	Nominal RA [deg]
dec_nom	-16.982463899744	Nominal Dec [deg]
roll_nom	115.70447912369	Nominal Roll [deg]
revision	3	Processing version of data
ontime	48.047814056277	Sum of GTIs [s]
livetime	47.439403703776	Livetime [s]
ontime4	51.200000032783	Sum of GTIs [s]
ontime5	48.088854059577	Sum of GTIs [s]
ontime6	51.200000032783	Sum of GTIs [s]
ontime7	48.047814056277	Sum of GTIs [s]
ontime8	51.200000032783	Sum of GTIs [s]
ontime9	48.006774052978	Sum of GTIs [s]
l2events	18494	Number of level 2 events

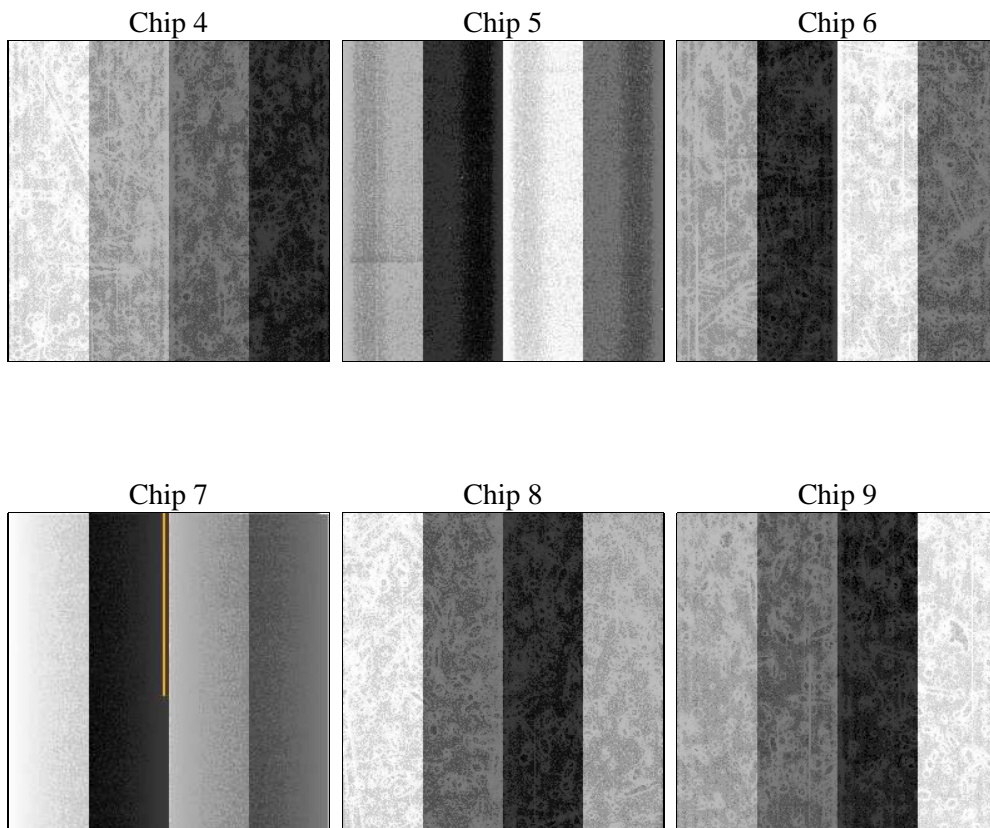
## 2 OBI

### 2.1 OBI

#### 2.1.1 Images



#### 2.1.2 Bias



### 2.1.3 Parameters

obi_num	0	Obi number	sched_exp_time	0.0	[s] Scheduled observation exposure time
ascdsver	8.4.5	Processing system revision	ontime	48.047814056277	Sum of GTIs [s]
caldsver	4.5.1.1	&#160	ontime4	51.200000032783	Sum of GTIs [s]
date	2012-09-17T02:54:01	Date and time of file creation	ontime5	48.088854059577	Sum of GTIs [s]
revision	3	Processing version of data	ontime6	51.200000032783	Sum of GTIs [s]
			ontime7	48.047814056277	Sum of GTIs [s]
			ontime8	51.200000032783	Sum of GTIs [s]
			ontime9	48.006774052978	Sum of GTIs [s]
			l1events	22058	Number of level 1 events

### 2.1.4 Events

	ccd 4	ccd 5	ccd 6	ccd 7	ccd 8	ccd 9
level 1 events	3718	3358	3973	3485	3968	3556
rejected events	426	429	373	294	539	378
rejected %	11%	12%	9%	8%	13%	10%

	ccd 4	ccd 5	ccd 6	ccd 7	ccd 8	ccd 9
grade 0 events	1826	733	1964	835	1908	1790
	49%	21%	49%	23%	48%	50%
grade 1 events	9	3	8	2	13	8
	0%	0%	0%	0%	0%	0%
grade 2 events	591	1023	613	683	577	507
	15%	30%	15%	19%	14%	14%
grade 3 events	210	196	245	317	210	218
	5%	5%	6%	9%	5%	6%
grade 4 events	226	211	232	332	228	189
	6%	6%	5%	9%	5%	5%
grade 5 events	27	70	30	65	40	39
	0%	2%	0%	1%	1%	1%
grade 6 events	439	766	546	1024	506	474
	11%	22%	13%	29%	12%	13%
grade 7 events	390	356	335	227	486	331
	10%	10%	8%	6%	12%	9%

## 2.2 Compared Parameters

Parameter	Planned	Actual	Parameter	Planned	Actual
Instrument	ACIS	ACIS	Obspar format version number	7	7
Detector	ACIS-456789	ACIS-456789	Obspar file type	PREDICTED	ACTUAL
Grating	NONE	NONE	Obspar update status	NONE	UPDATED
Data mode	FAINT	FAINT	On-chip summing requested	N	N
Observation mode	SECONDARY	SECONDARY	Subarray requested	NONE	NONE
[deg] Pointing RA	0	349.975053790807	Alternating exposures requested	N	N
[deg] Pointing Dec	0	-16.98246389974448	[s] Primary exposure time	0.000000	3.2
[deg] Pointing Roll	0.0	115.704479123692			
[mm] SIM focus pos	-0.684267	-0.6828225247311905			
[mm] SIM defocus	0	0.8505141146731063			
[mm] SIM translation stage pos	-190.132523	250.466033080201			
[mm] SIM translation stage offset	0	-0.01005468664627074			
[s] Observation start time (MET)	107136713.488	107136712.71958			
Observation start date	2001-05-25T00:11:53	2001-05-25T00:11:52			
[s] Observation end time (MET)	107138505.188	107138504.41965			
Observation end date	2001-05-25T00:41:45	2001-05-25T00:41:44			
Read mode	TIMED	TIMED			

## 2.3 Star Slots

## 2.4 FID Slots

## A Summary

### A.1 Status

V&V Scientist	Jen Lauer
V&V Date (YYYY-MM-DD)	2012.09.19
V&V Edition	1
V&V Disposition and Status	OK
V&V Charge Time	0.048047814056277

### A.2 Comments