

V&V Reference Report

L2 ASCDS Version : 7.6.9

Observation 61618 - L2 Version 001
Chandra X-Ray Center

L2 Processing Date : Nov 23 2006

Contents

1	Front	2
2	OBI	3
2.1	OBI	3
2.1.1	Images	3
2.1.2	Bias	3
2.1.3	Parameters	4
2.1.4	Events	4
2.2	Compared Parameters	5
2.3	Aspect	6
2.4	Star Slots	8
2.5	FID Slots	8
A	Summary	9
A.1	Status	9
A.2	Comments	9

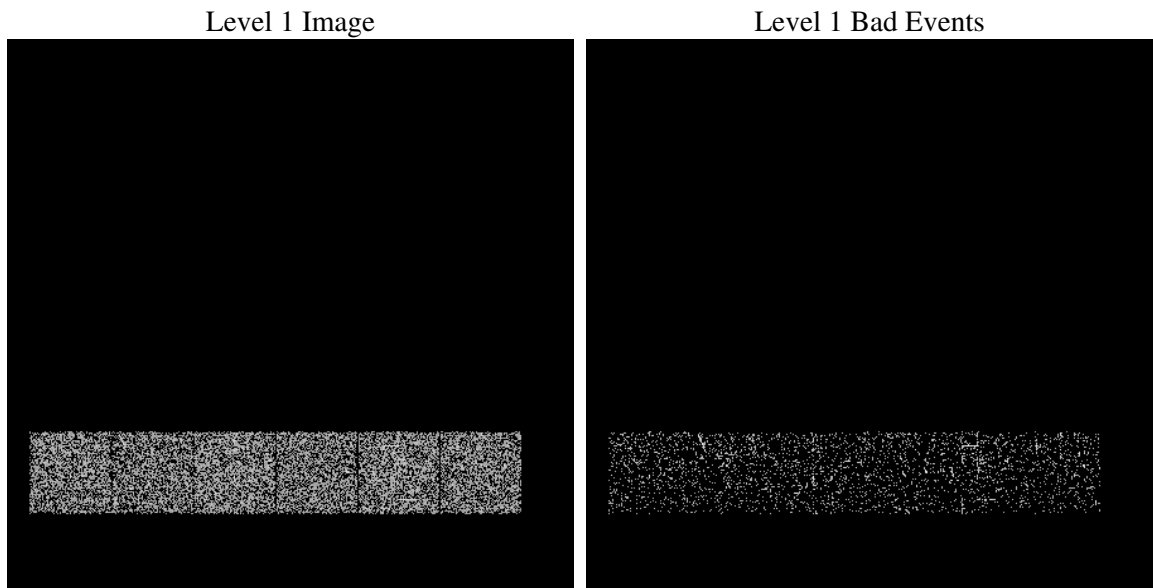
1 Front

seq_num	
obs_id	61618
title	ACIS-456789 diagnostics
observer	CHANDRA engineering request/realtime commanding
object	
dtcycle	0
cycle	P
ra_targ	0.0
dec_targ	0.0
ra_nom	349.97505379081
dec_nom	-16.982463899744
roll_nom	115.70447912369
revision	2
ontime	46.447814062238
livetime	45.859663873066
ontime4	49.811914220452
ontime5	46.488854065537
ontime6	49.770874217153
ontime7	46.447814062238
ontime8	49.852954223752
ontime9	46.406774058938
l2events	17063

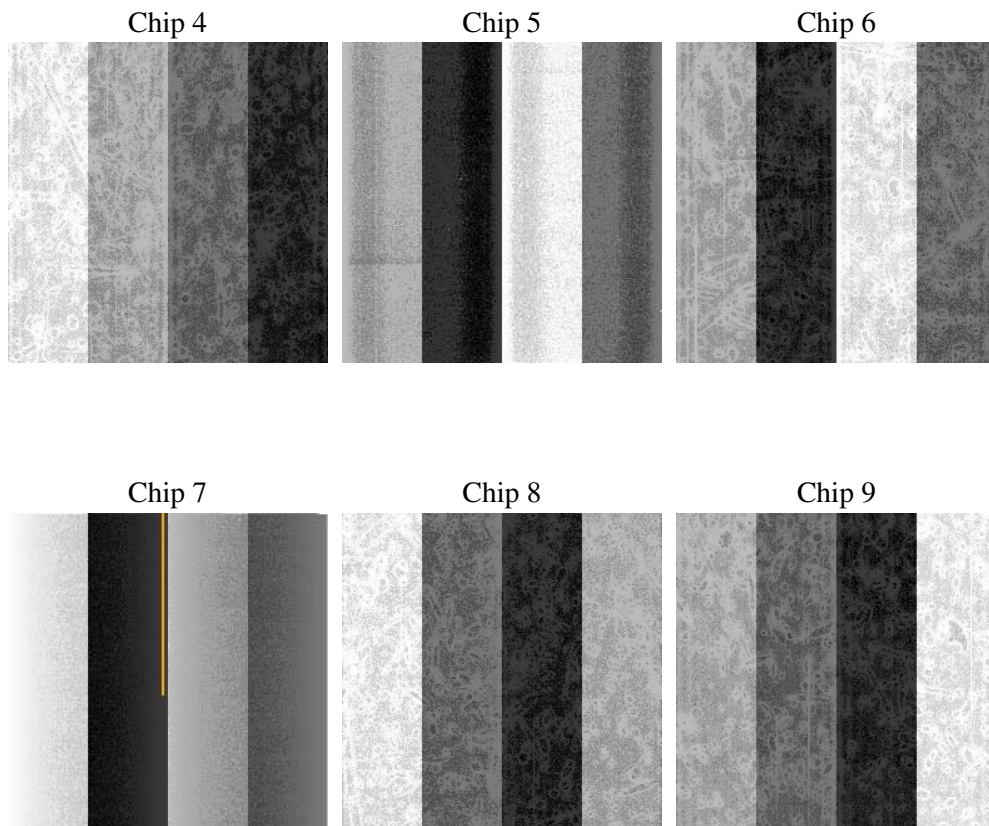
2 OBI

2.1 OBI

2.1.1 Images



2.1.2 Bias



2.1.3 Parameters

obi_num	0
ascdsver	7.6.9
caldbver	3.2.4
date	2006-11-23T07:03:49
revision	2

sched_exp_time	0.0
ontime	48.615001738071
ontime4	51.855981901288
ontime5	48.615001738071
ontime6	51.855981901288
ontime7	48.615001738071
ontime8	51.855981901288
ontime9	48.615001738071
l1events	22058

2.1.4 Events

	ccd 4	ccd 5	ccd 6	ccd 7	ccd 8	ccd 9
level 1 events	3718	3358	3973	3485	3968	3556
rejected events	669	696	639	593	730	600
rejected %	17%	20%	16%	17%	18%	16%

	ccd 4	ccd 5	ccd 6	ccd 7	ccd 8	ccd 9
grade 0 events	1826	387	1964	624	1908	1790
	49%	11%	49%	17%	48%	50%
grade 1 events	9	2	8	2	13	8
	0%	0%	0%	0%	0%	0%
grade 2 events	591	1339	613	886	577	507
	15%	39%	15%	25%	14%	14%
grade 3 events	210	103	245	230	210	218
	5%	3%	6%	6%	5%	6%
grade 4 events	226	101	232	233	228	189
	6%	3%	5%	6%	5%	5%
grade 5 events	27	52	30	53	40	39
	0%	1%	0%	1%	1%	1%
grade 6 events	439	913	546	1141	506	474
	11%	27%	13%	32%	12%	13%
grade 7 events	390	461	335	316	486	331
	10%	13%	8%	9%	12%	9%

2.2 Compared Parameters

Parameter	Planned	Actual	Parameter	Planned	Actual
Instrument	ACIS	ACIS	Obspar format version number	6	6
Detector	ACIS-456789	ACIS-456789	Obspar file type	PREDICTED	ACTUAL
Grating	NONE	NONE	Obspar update status	NONE	UPDATED
Data mode	FAINT	FAINT	On-chip summing requested	N	N
Observation mode	SECONDARY	SECONDARY	Subarray requested	NONE	NONE
Pointing RA	0	349.975053790807	Alternating exposures requested	N	N
Pointing Dec	0	-16.98246389974447	Primary exposure time	0.000000	3.2
Pointing Roll	0.0	115.704479123692			
SIM focus pos (mm)	-0.684267	-0.6828225247311905			
SIM defocus (mm)	0	0.8505141146731063			
SIM translation stage pos (mm)	-190.132523	250.466033080201			
SIM translation stage offset (mm)	0	-0.01005468664627074			
Observation start time	107136713.488	107136712.71958			
Observation start date	2001-05-25T00:11:53	2001-05-25T00:11:52			
Observation end time	107138505.188	107138504.41965			
Observation end date	2001-05-25T00:41:45	2001-05-25T00:41:44			
Read mode	TIMED	TIMED			

2.3 Aspect

2.4 Star Slots

2.5 FID Slots

A Summary

A.1 Status

V&V Scientist	Jen Lauer
V&V Date (YYYY-MM-DD)	2006.11.24
V&V Edition	1
V&V Disposition and Status	OK
V&V Charge Time	0.04644781

A.2 Comments