

V&V Reference Report

L2 ASCDS Version : 8.4.5

Observation 61615 - L2 Version 3
Chandra X-Ray Center

L2 Processing Date : Sep 17 2012

Contents

1	Front	2
2	OBI	3
2.1	OBI	3
2.1.1	Images	3
2.1.2	Bias	3
2.1.3	Parameters	4
2.1.4	Events	4
2.2	Compared Parameters	5
2.3	Star Slots	6
2.4	FID Slots	6
A	Summary	7
A.1	Status	7
A.2	Comments	7

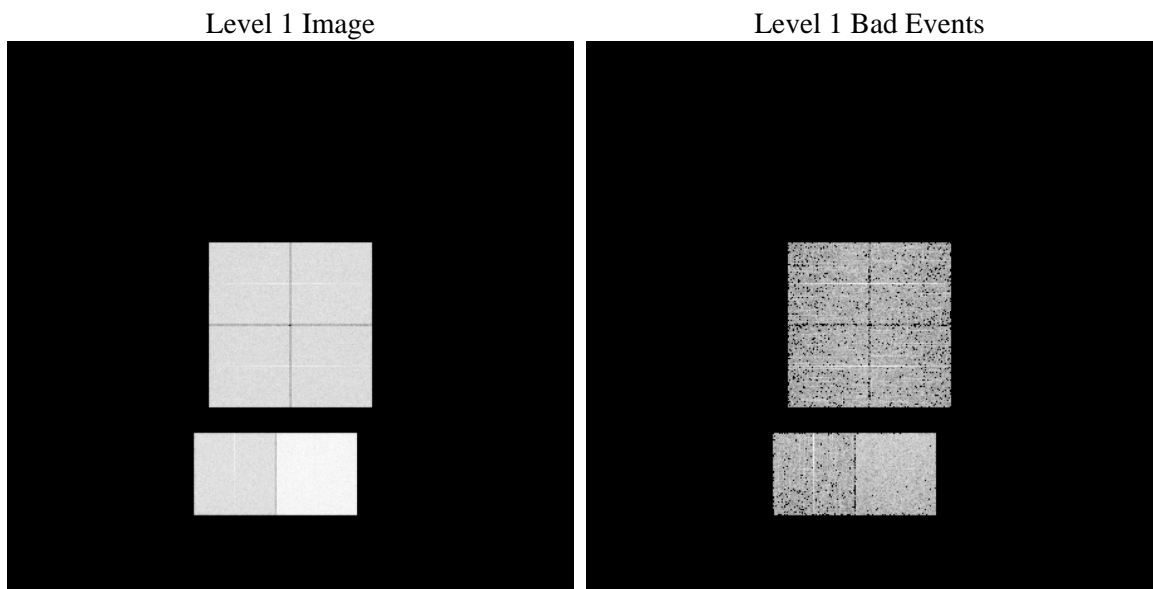
1 Front

seq_num	 	Sequence number
obs_id	61615	Observation id
title	ACIS-012367 diagnostics	Proposal title
observer	CHANDRA engineering request/realtime commanding	Principal investig
object	 	Source name
dtcycle	0	
cycle	P	events from which exps? Prim/Second/Both
ra_targ	0.0	Observer's specified target RA [deg]
dec_targ	0.0	Observer's specified target Dec [deg]
ra_nom	357.9778695836	Nominal RA [deg]
dec_nom	17.019272705388	Nominal Dec [deg]
roll_nom	105.03652446739	Nominal Roll [deg]
revision	3	Processing version of data
ontime	5556.6303747296	Sum of GTIs [s]
livetime	5486.2689751237	Livetime [s]
ontime0	2211.8970578313	Sum of GTIs [s]
ontime1	2283.1581697613	Sum of GTIs [s]
ontime2	2165.0121620148	Sum of GTIs [s]
ontime3	2168.2530823052	Sum of GTIs [s]
ontime6	2396.5124396533	Sum of GTIs [s]
ontime7	5556.6303747296	Sum of GTIs [s]
l2events	1055929	Number of level 2 events

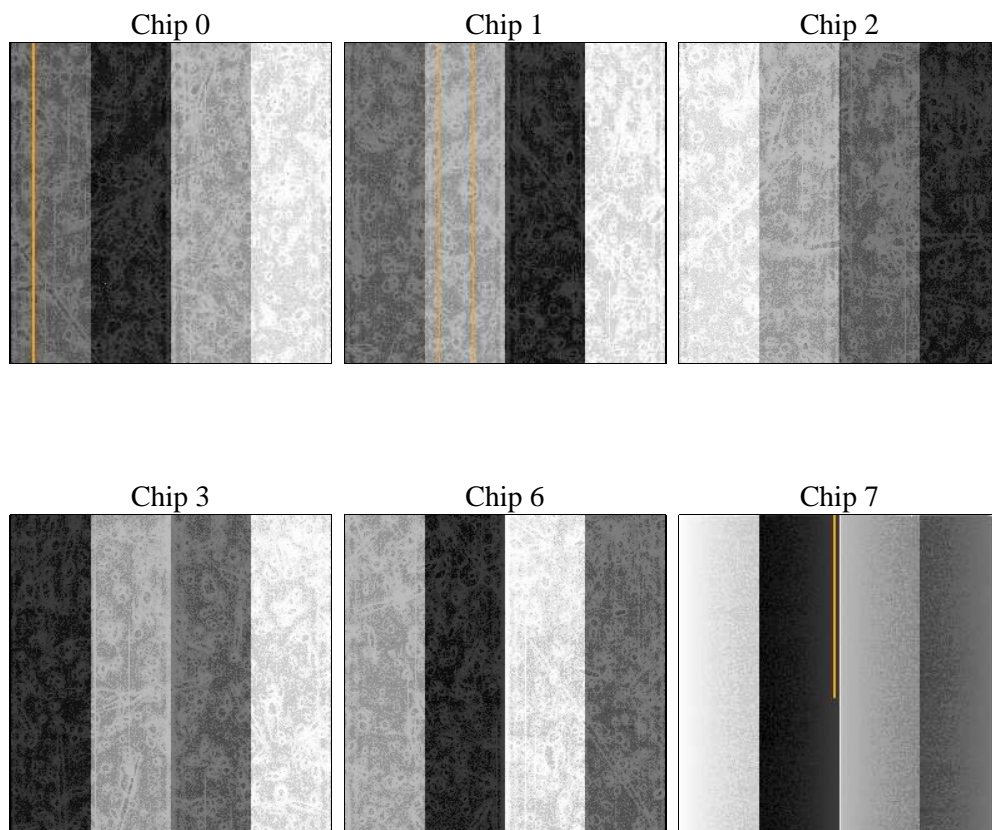
2 OBI

2.1 OBI

2.1.1 Images



2.1.2 Bias



2.1.3 Parameters

obi_num	0	Obi number	sched_exp_time	0.0	[s] Scheduled observation exposure time
ascdsver	8.4.5	Processing system revision	ontime	5556.6303747296	Sum of GTIs [s]
caldsver	4.5.1.1	 	ontime0	2211.8970578313	Sum of GTIs [s]
date	2012-09-17T03:09:47	Date and time of file creation	ontime1	2283.1581697613	Sum of GTIs [s]
revision	3	Processing version of data	ontime2	2165.0121620148	Sum of GTIs [s]
			ontime3	2168.2530823052	Sum of GTIs [s]
			ontime6	2396.5124396533	Sum of GTIs [s]
			ontime7	5556.6303747296	Sum of GTIs [s]
			l1events	1217063	Number of level 1 events

2.1.4 Events

	ccd 0	ccd 1	ccd 2	ccd 3	ccd 6	ccd 7		ccd 0	ccd 1	ccd 2	ccd 3	ccd 6	ccd 7
level 1 events	158997	163768	157702	157789	180536	398271	grade 0 events	78196	81132	78074	78120	88563	95038
rejected events	17308	17146	17073	17486	18829	28500		49%	49%	49%	49%	49%	23%
rejected %	10%	10%	10%	11%	10%	7%	grade 1 events	396	449	399	434	446	227
								0%	0%	0%	0%	0%	0%
							grade 2 events	25020	25885	24747	24815	28100	82596
								15%	15%	15%	15%	15%	20%
							grade 3 events	9121	9459	8917	8913	10042	37895
								5%	5%	5%	5%	5%	9%
							grade 4 events	8975	9245	8777	8974	9942	37802
								5%	5%	5%	5%	5%	9%
							grade 5 events	1265	1229	1171	1164	1416	6200
								0%	0%	0%	0%	0%	1%
							grade 6 events	20563	21118	20114	19481	25295	116666
								12%	12%	12%	12%	14%	29%
							grade 7 events	15461	15251	15503	15888	16732	21847
								9%	9%	9%	10%	9%	5%

2.2 Compared Parameters

Parameter	Planned	Actual	Parameter	Planned	Actual
Instrument	ACIS	ACIS	Obspar format version number	7	7
Detector	ACIS-012367	ACIS-012367	Obspar file type	PREDICTED	ACTUAL
Grating	NONE	NONE	Obspar update status	NONE	UPDATED
Data mode	FAINT	FAINT	On-chip summing requested	N	N
Observation mode	SECONDARY	SECONDARY	Subarray requested	NONE	NONE
[deg] Pointing RA	0	357.9778695836043	Alternating exposures requested	N	N
[deg] Pointing Dec	0	17.01927270538844	[s] Primary exposure time	3.2	3.2
[deg] Pointing Roll	0.0	105.0365244673904			
[mm] SIM focus pos	-0.782348	-0.6828225247311905			
[mm] SIM defocus	0	0.8505141146731063			
[mm] SIM translation stage pos	-233.592463	250.466033080201			
[mm] SIM translation stage offset	0	-0.01005468664627074			
[s] Observation start time (MET)	107187684.690039	107187683.92157			
Observation start date	2001-05-25T14:21:25	2001-05-25T14:21:23			
[s] Observation end time (MET)	107196083.540366	107196082.7719			
Observation end date	2001-05-25T16:41:24	2001-05-25T16:41:22			
Read mode	TIMED	TIMED			

2.3 Star Slots

2.4 FID Slots

A Summary

A.1 Status

V&V Scientist	Jen Lauer
V&V Date (YYYY-MM-DD)	2012.09.19
V&V Edition	1
V&V Disposition and Status	OK
V&V Charge Time	5.5566303747296

A.2 Comments