

V&V Reference Report

L2 ASCDS Version : 7.6.9

Observation 61599 - L2 Version 001
Chandra X-Ray Center

L2 Processing Date : Nov 28 2006

Contents

1	Front	2
2	OBI	3
2.1	OBI	3
2.1.1	Images	3
2.1.2	Bias	3
2.1.3	Parameters	4
2.1.4	Events	4
2.2	Compared Parameters	5
2.3	Aspect	6
2.4	Star Slots	8
2.5	FID Slots	8
A	Summary	9
A.1	Status	9
A.2	Comments	9

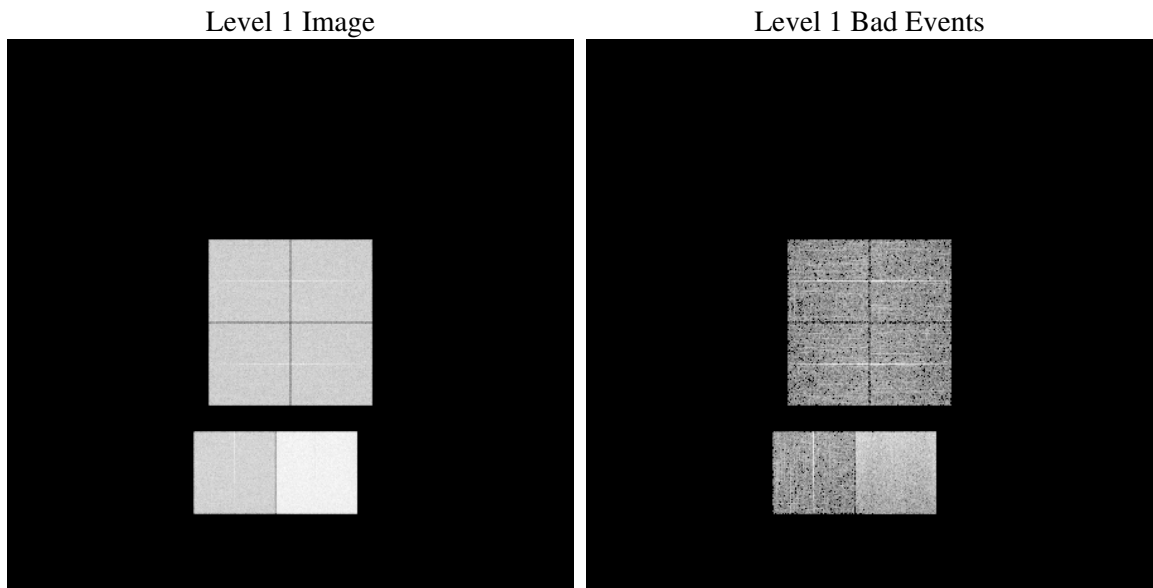
1 Front

seq_num	
obs_id	61599
title	ACIS-012367 diagnostics
observer	CHANDRA engineering request/realtime commanding
object	
dtcycle	0
cycle	P
ra_targ	0.0
dec_targ	0.0
ra_nom	324.97628764336
dec_nom	-44.976692719362
roll_nom	93.104705849266
revision	2
ontime	6537.2606698573
livetime	6454.4819389897
ontime0	2631.9138412327
ontime1	2663.8644232601
ontime2	2541.2468212992
ontime3	2589.3210615367
ontime6	2796.7471725941
ontime7	6537.2606698573
l2events	1223052

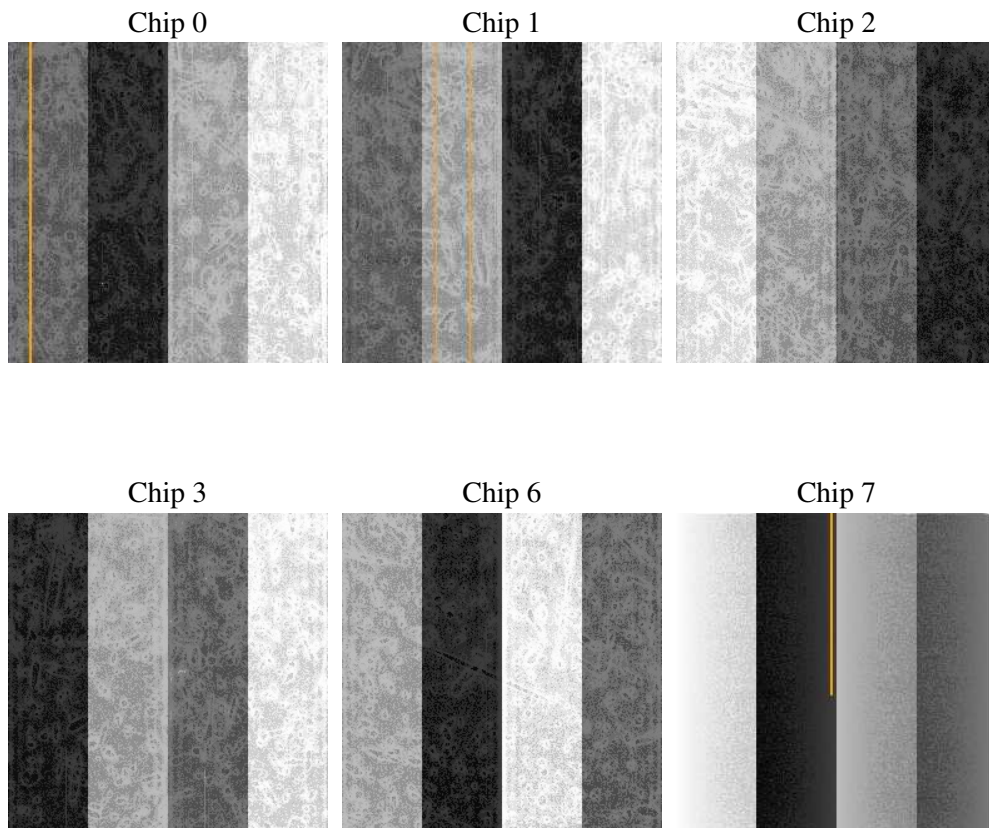
2 OBI

2.1 OBI

2.1.1 Images



2.1.2 Bias



2.1.3 Parameters

obi_num	0
ascdsver	7.6.9
caldbver	3.2.4
date	2006-11-28T07:30:28
revision	2

sched_exp_time	0.0
ontime	6540.3508204073
ontime0	2634.9629517794
ontime1	2667.3730625808
ontime2	2544.2138518542
ontime3	2592.8297008574
ontime6	2800.2558119148
ontime7	6540.3508204073
l1events	1427122

2.1.4 Events

	ccd 0	ccd 1	ccd 2	ccd 3	ccd 6	ccd 7
level 1 events	186706	189337	184408	187724	210427	468520
rejected events	20303	20118	20665	20866	22366	47806
rejected %	10%	10%	11%	11%	10%	10%

	ccd 0	ccd 1	ccd 2	ccd 3	ccd 6	ccd 7
grade 0 events	91718	93518	91478	93490	103053	81792
	49%	49%	49%	49%	48%	17%
grade 1 events	459	522	481	555	516	189
	0%	0%	0%	0%	0%	0%
grade 2 events	29341	29896	28865	29258	32582	123555
	15%	15%	15%	15%	15%	26%
grade 3 events	10604	10806	10167	10560	11525	32709
	5%	5%	5%	5%	5%	6%
grade 4 events	10427	10708	10224	10681	11680	32709
	5%	5%	5%	5%	5%	6%
grade 5 events	1430	1544	1351	1519	1774	6968
	0%	0%	0%	0%	0%	1%
grade 6 events	24524	24499	23225	23103	29415	150166
	13%	12%	12%	12%	13%	32%
grade 7 events	18203	17844	18617	18558	19882	40432
	9%	9%	10%	9%	9%	8%

2.2 Compared Parameters

Parameter	Planned	Actual	Parameter	Planned	Actual
Instrument	ACIS	ACIS	Obspar format version number	6	6
Detector	ACIS-012367	ACIS-012367	Obspar file type	PREDICTED	ACTUAL
Grating	NONE	NONE	Obspar update status	NONE	UPDATED
Data mode	FAINT	FAINT	On-chip summing requested	N	N
Observation mode	SECONDARY	SECONDARY	Subarray requested	NONE	NONE
Pointing RA	0	324.9762876433613	Alternating exposures requested	N	N
Pointing Dec	0	-44.97669271936196	Primary exposure time	3.2	3.2
Pointing Roll	0.0	93.1047058492661			
SIM focus pos (mm)	-0.782348	-0.6828225247311905			
SIM defocus (mm)	0	0.8505141146731063			
SIM translation stage pos (mm)	-233.592463	250.466033080201			
SIM translation stage offset (mm)	0	-0.01005468664627074			
Observation start time	108279512.682565	108279511.91409			
Observation start date	2001-06-07T05:38:33	2001-06-07T05:38:31			
Observation end time	108290879.933008	108290879.16454			
Observation end date	2001-06-07T08:48:00	2001-06-07T08:47:59			
Read mode	TIMED	TIMED			

2.3 Aspect

2.4 Star Slots

2.5 FID Slots

A Summary

A.1 Status

V&V Scientist	Jen Lauer
V&V Date (YYYY-MM-DD)	2006.11.28
V&V Edition	1
V&V Disposition and Status	OK
V&V Charge Time	6.53726066

A.2 Comments