

V&V Reference Report

L2 ASCDS Version : 8.4.5

Observation 61582 - L2 Version 3
Chandra X-Ray Center

L2 Processing Date : Sep 18 2012

Contents

1	Front	2
2	OBI	3
2.1	OBI	3
2.1.1	Images	3
2.1.2	Bias	3
2.1.3	Parameters	4
2.1.4	Events	4
2.2	Compared Parameters	5
2.3	Star Slots	6
2.4	FID Slots	6
A	Summary	7
A.1	Status	7
A.2	Comments	7

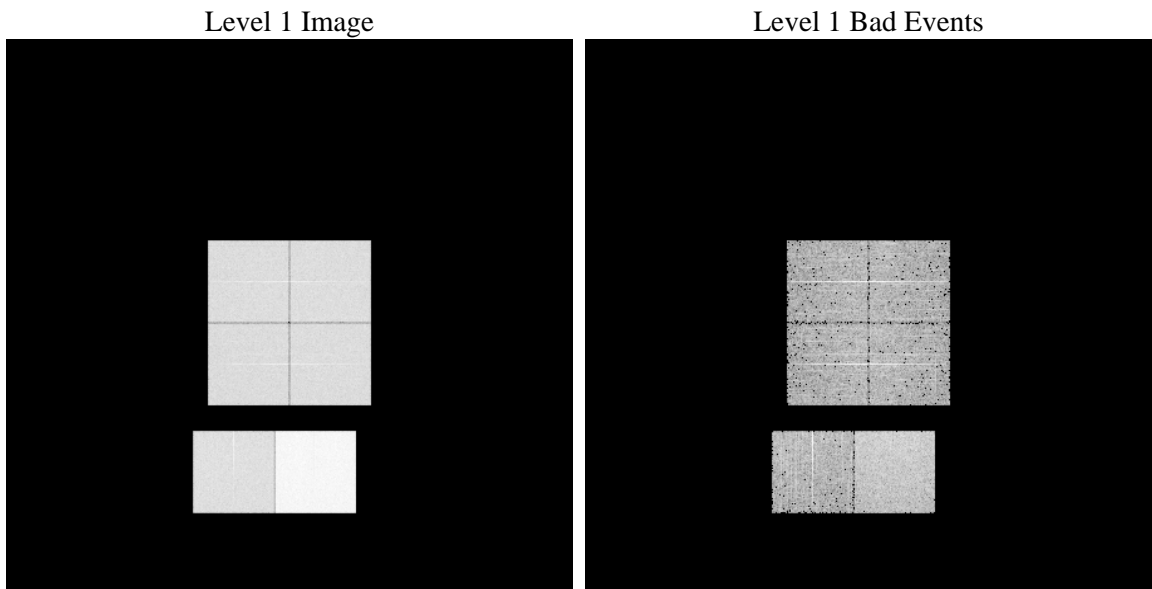
1 Front

seq_num	 	Sequence number
obs_id	61582	Observation id
title	ACIS-012367 diagnostics	Proposal title
observer	CHANDRA engineering request/realtime commanding	Principal investig
object	 	Source name
dtcycle	0	
cycle	P	events from which exps? Prim/Second/Both
ra_targ	0.0	Observer's specified target RA [deg]
dec_targ	0.0	Observer's specified target Dec [deg]
ra_nom	301.98643182395	Nominal RA [deg]
dec_nom	-33.973649331375	Nominal Dec [deg]
roll_nom	80.423671731198	Nominal Roll [deg]
revision	3	Processing version of data
ontime	7180.1634960324	Sum of GTIs [s]
livetime	7089.2439424702	Livetime [s]
ontime0	2881.2817118168	Sum of GTIs [s]
ontime1	2913.6921017617	Sum of GTIs [s]
ontime2	2719.2297520489	Sum of GTIs [s]
ontime3	2800.2559411377	Sum of GTIs [s]
ontime6	2994.7177825123	Sum of GTIs [s]
ontime7	7180.1634960324	Sum of GTIs [s]
l2events	1329048	Number of level 2 events

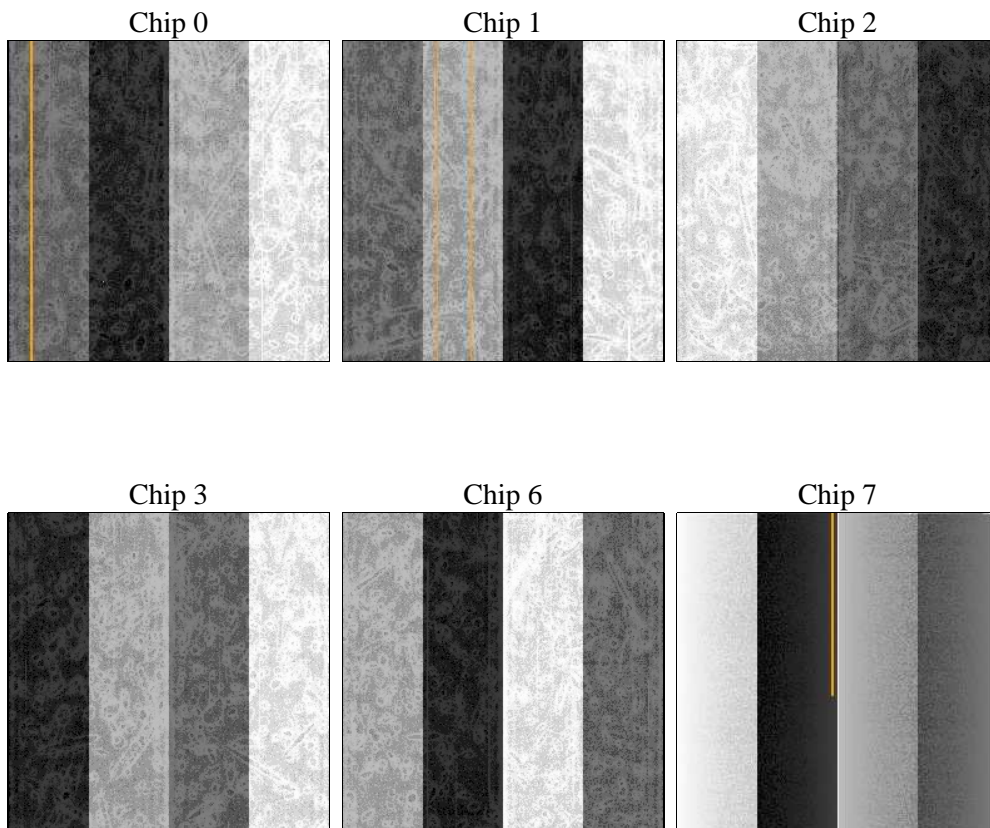
2 OBI

2.1 OBI

2.1.1 Images



2.1.2 Bias



2.1.3 Parameters

obi_num	0	Obi number	sched_exp_time	0.0	[s] Scheduled observation exposure time
ascdsver	8.4.5	Processing system revision	ontime	7180.1634960324	Sum of GTIs [s]
caldsver	4.5.1.1	 	ontime0	2881.2817118168	Sum of GTIs [s]
date	2012-09-18T03:50:28	Date and time of file creation	ontime1	2913.6921017617	Sum of GTIs [s]
revision	3	Processing version of data	ontime2	2719.2297520489	Sum of GTIs [s]
			ontime3	2800.2559411377	Sum of GTIs [s]
			ontime6	2994.7177825123	Sum of GTIs [s]
			ontime7	7180.1634960324	Sum of GTIs [s]
			l1events	1547522	Number of level 1 events

2.1.4 Events

	ccd 0	ccd 1	ccd 2	ccd 3	ccd 6	ccd 7		ccd 0	ccd 1	ccd 2	ccd 3	ccd 6	ccd 7
level 1 events	204619	207675	197290	202884	223521	511533	grade 0 events	100991	102573	97528	100876	108920	120157
rejected events	23098	23274	23663	24264	26093	42557		49%	49%	49%	49%	48%	23%
rejected %	11%	11%	11%	11%	11%	8%	grade 1 events	567	482	538	486	544	317
								0%	0%	0%	0%	0%	0%
							grade 2 events	32239	32756	30714	31355	34178	104134
								15%	15%	15%	15%	15%	20%
							grade 3 events	11671	11713	11081	11301	12079	48210
								5%	5%	5%	5%	5%	9%
							grade 4 events	11615	11680	10961	11296	12281	47704
								5%	5%	5%	5%	5%	9%
							grade 5 events	1615	1616	1509	1651	1901	8140
								0%	0%	0%	0%	0%	1%
							grade 6 events	26459	27095	24832	25273	31761	152755
								12%	13%	12%	12%	14%	29%
							grade 7 events	19462	19760	20127	20646	21857	30116
								9%	9%	10%	10%	9%	5%

2.2 Compared Parameters

Parameter	Planned	Actual
Instrument	ACIS	ACIS
Detector	ACIS-012367	ACIS-012367
Grating	NONE	NONE
Data mode	FAINT	FAINT
Observation mode	SECONDARY	SECONDARY
[deg] Pointing RA	0	301.9864318239451
[deg] Pointing Dec	0	-33.97364933137533
[deg] Pointing Roll	0.0	80.42367173119807
[mm] SIM focus pos	-0.782348	-0.7809083437167272
[mm] SIM defocus	0	0.7524282956875696
[mm] SIM translation stage pos	-233.592463	250.466033080201
[mm] SIM translation stage offset	0	-0.01005468664627074
[s] Observation start time (MET)	109228219.91953	109228219.15107
Observation start date	2001-06-18T05:10:20	2001-06-18T05:10:19
[s] Observation end time (MET)	109251253.720429	109251252.95197
Observation end date	2001-06-18T11:34:14	2001-06-18T11:34:12
Read mode	TIMED	TIMED

Parameter	Planned	Actual
Obspar format version number	7	7
Obspar file type	PREDICTED	ACTUAL
Obspar update status	NONE	UPDATED
On-chip summing requested	N	N
Subarray requested	NONE	NONE
Alternating exposures requested	N	N
[s] Primary exposure time	3.2	3.2

2.3 Star Slots

2.4 FID Slots

A Summary

A.1 Status

V&V Scientist	Beth Sundheim
V&V Date (YYYY-MM-DD)	2012.09.20
V&V Edition	1
V&V Disposition and Status	OK
V&V Charge Time	7.1801634960324

A.2 Comments