

V&V Reference Report

L2 ASCDS Version : 7.6.9

Observation 61578 - L2 Version 001
Chandra X-Ray Center

L2 Processing Date : Dec 8 2006

Contents

1	Front	2
2	OBI	3
2.1	OBI	3
2.1.1	Images	3
2.1.2	Bias	3
2.1.3	Parameters	4
2.1.4	Events	4
2.2	Compared Parameters	5
2.3	Aspect	6
2.4	Star Slots	8
2.5	FID Slots	8
A	Summary	9
A.1	Status	9
A.2	Comments	9

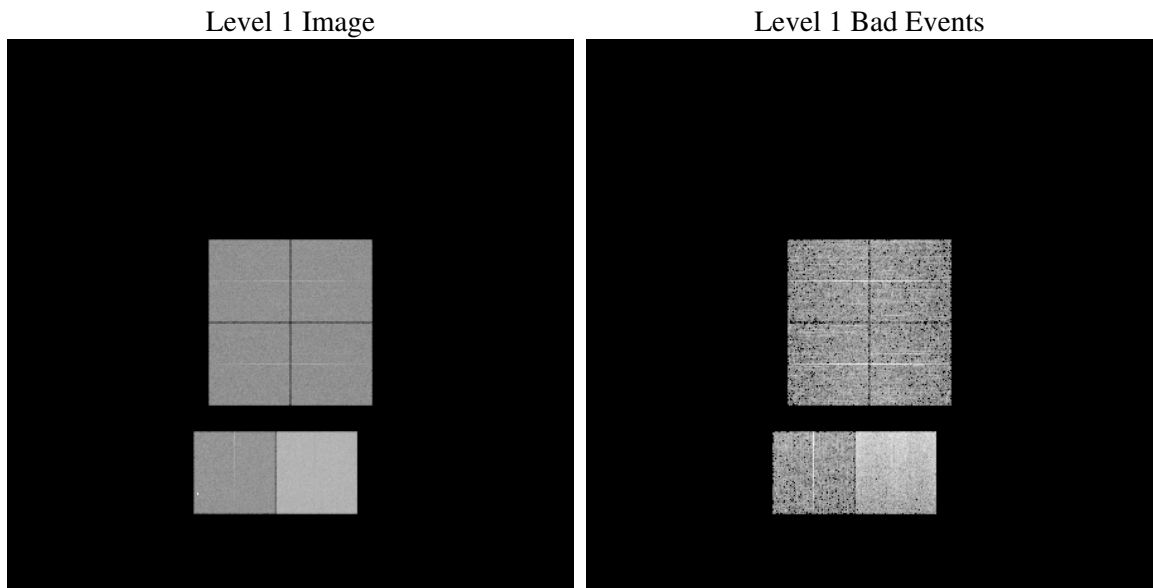
1 Front

seq_num	
obs_id	61578
title	ACIS-012367 diagnostics
observer	CHANDRA engineering request/realtime commanding
object	
dtcycle	0
cycle	P
ra_targ	0.0
dec_targ	0.0
ra_nom	210.01300161078
dec_nom	-29.276340749847
roll_nom	260.58423893971
revision	2
ontime	6620.2126453817
livetime	6536.3835266524
ontime0	2643.5643599778
ontime1	2656.5694702566
ontime2	2517.2461892813
ontime3	2543.0102395862
ontime6	2766.8463217914
ontime7	6620.2126453817
l2events	1221607

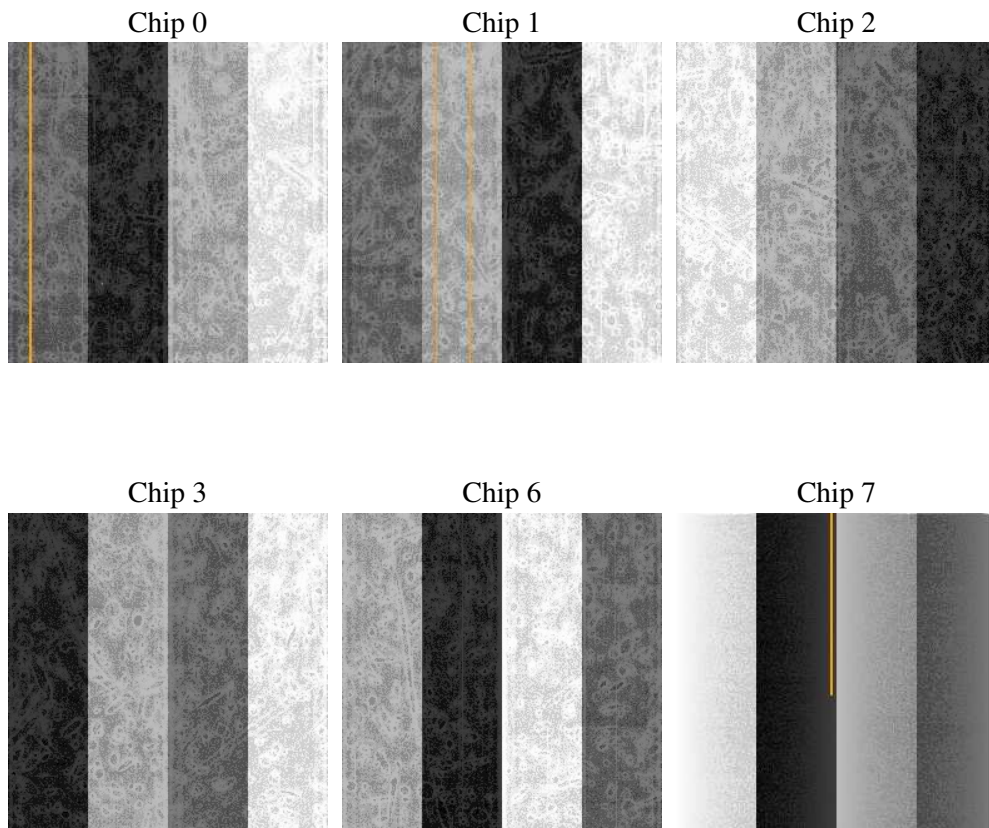
2 OBI

2.1 OBI

2.1.1 Images



2.1.2 Bias



2.1.3 Parameters

obi_num	0
ascdsver	7.6.9
caldsver	3.2.4
date	2006-12-08T16:28:36
revision	2

sched_exp_time	0.0
ontime	6621.3753970116
ontime0	2644.6860716045
ontime1	2657.6501418948
ontime2	2518.2858209163
ontime3	2544.2140312195
ontime6	2767.8449134231
ontime7	6621.3753970116
l1events	1428013

2.1.4 Events

	ccd 0	ccd 1	ccd 2	ccd 3	ccd 6	ccd 7
level 1 events	188451	190035	183958	183830	208717	473022
rejected events	20588	20296	21380	21055	21980	48633
rejected %	10%	10%	11%	11%	10%	10%

	ccd 0	ccd 1	ccd 2	ccd 3	ccd 6	ccd 7
grade 0 events	92591	93397	90386	90678	101723	82061
	49%	49%	49%	49%	48%	17%
grade 1 events	516	470	491	493	537	178
	0%	0%	0%	0%	0%	0%
grade 2 events	29541	30009	28698	28445	32715	124825
	15%	15%	15%	15%	15%	26%
grade 3 events	10670	10711	10270	10365	11399	33127
	5%	5%	5%	5%	5%	7%
grade 4 events	10599	10908	10182	10252	11365	32520
	5%	5%	5%	5%	5%	6%
grade 5 events	1464	1492	1434	1490	1640	7008
	0%	0%	0%	0%	0%	1%
grade 6 events	24462	24714	23042	23035	29535	151856
	12%	13%	12%	12%	14%	32%
grade 7 events	18608	18334	19455	19072	19803	41447
	9%	9%	10%	10%	9%	8%

2.2 Compared Parameters

Parameter	Planned	Actual	Parameter	Planned	Actual
Instrument	ACIS	ACIS	Obspar format version number	6	6
Detector	ACIS-012367	ACIS-012367	Obspar file type	PREDICTED	ACTUAL
Grating	NONE	NONE	Obspar update status	NONE	UPDATED
Data mode	FAINT	FAINT	On-chip summing requested	N	N
Observation mode	SECONDARY	SECONDARY	Subarray requested	NONE	NONE
Pointing RA	0	210.0130016107781	Alternating exposures requested	N	N
Pointing Dec	0	-29.27634074984655	Primary exposure time	0.000000	3.2
Pointing Roll	0.0	260.5842389397062			
SIM focus pos (mm)	-0.782348	-0.7809083437167272			
SIM defocus (mm)	0	0.7524282956875696			
SIM translation stage pos (mm)	-233.592463	250.466033080201			
SIM translation stage offset (mm)	0	-0.01005468664627074			
Observation start time	109650011.536	109650010.76752			
Observation start date	2001-06-23T02:20:12	2001-06-23T02:20:10			
Observation end time	109661928.186	109661927.41799			
Observation end date	2001-06-23T05:38:48	2001-06-23T05:38:47			
Read mode	TIMED	TIMED			

2.3 Aspect

2.4 Star Slots

2.5 FID Slots

A Summary

A.1 Status

V&V Scientist	Beth Sundheim
V&V Date (YYYY-MM-DD)	2006.12.08
V&V Edition	1
V&V Disposition and Status	OK
V&V Charge Time	6.62021264

A.2 Comments