

V&V Reference Report

L2 ASCDS Version : 7.6.9

Observation 61546 - L2 Version 001
Chandra X-Ray Center

L2 Processing Date : Dec 14 2006

Contents

1	Front	2
2	OBI	3
2.1	OBI	3
2.1.1	Images	3
2.1.2	Bias	3
2.1.3	Parameters	4
2.1.4	Events	4
2.2	Compared Parameters	5
2.3	Aspect	6
2.4	Star Slots	8
2.5	FID Slots	8
A	Summary	9
A.1	Status	9
A.2	Comments	9

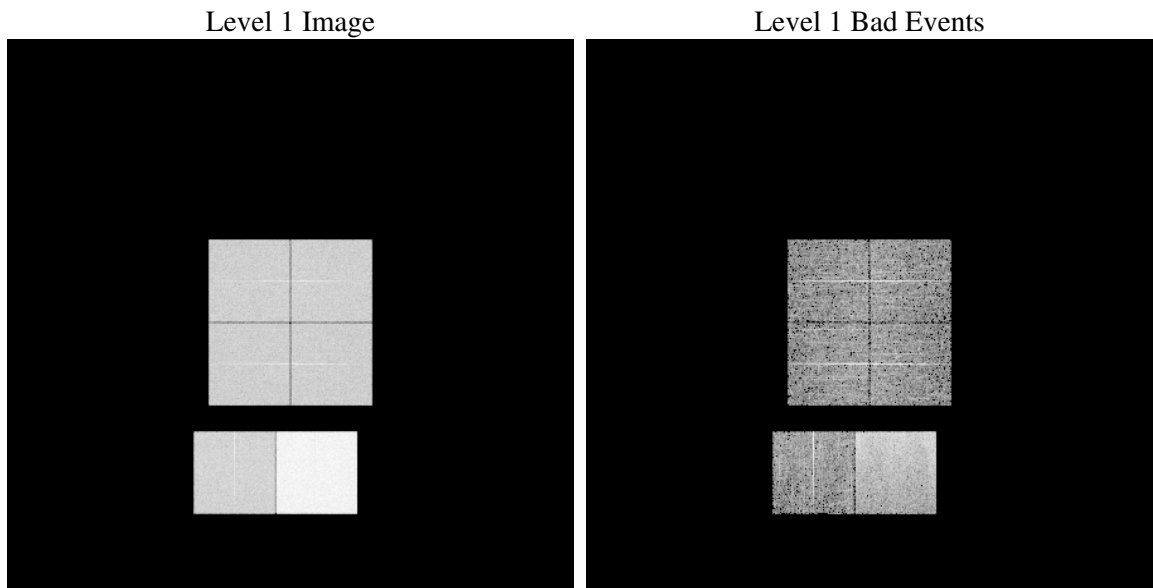
1 Front

seq_num	
obs_id	61546
title	ACIS-012367 diagnostics
observer	CHANDRA engineering request/realtime commanding
object	
dtcycle	0
cycle	P
ra_targ	0.0
dec_targ	0.0
ra_nom	240.00527249229
dec_nom	-5.0282278670523
roll_nom	247.92212264005
revision	2
ontime	6820.7783231735
livetime	6734.4095210659
ontime0	2678.8349610567
ontime1	2698.3221512139
ontime2	2578.4450204223
ontime3	2562.0755109489
ontime6	2841.0097119212
ontime7	6820.7783231735
l2events	1216427

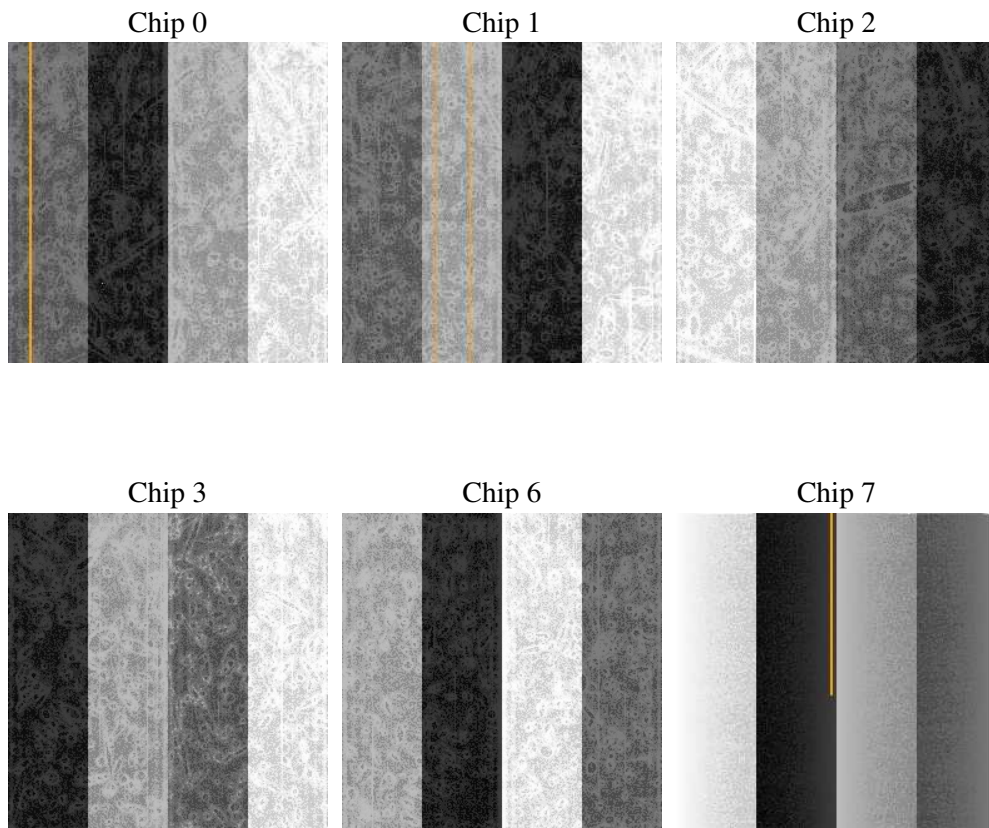
2 OBI

2.1 OBI

2.1.1 Images



2.1.2 Bias



2.1.3 Parameters

obi_num	0
ascdsver	7.6.9
caldsver	3.2.4
date	2006-12-14T16:53:07
revision	2

sched_exp_time	0.0
ontime	6822.3222040087
ontime0	2680.3378018886
ontime1	2699.7839520574
ontime2	2579.8657812625
ontime3	2563.6604317874
ontime6	2842.3894327581
ontime7	6822.3222040087
l1events	1426190

2.1.4 Events

	ccd 0	ccd 1	ccd 2	ccd 3	ccd 6	ccd 7
level 1 events	185744	188231	183367	182239	207966	478643
rejected events	20452	21089	21908	20998	23299	50902
rejected %	11%	11%	11%	11%	11%	10%

	ccd 0	ccd 1	ccd 2	ccd 3	ccd 6	ccd 7
grade 0 events	91501	91973	89826	90144	100440	82454
	49%	48%	48%	49%	48%	17%
grade 1 events	509	522	493	492	532	215
	0%	0%	0%	0%	0%	0%
grade 2 events	29049	29506	28427	28388	32227	125731
	15%	15%	15%	15%	15%	26%
grade 3 events	10460	10581	10178	10129	11493	33505
	5%	5%	5%	5%	5%	6%
grade 4 events	10482	10683	10297	10359	11264	32764
	5%	5%	5%	5%	5%	6%
grade 5 events	1457	1547	1430	1483	1763	7221
	0%	0%	0%	0%	0%	1%
grade 6 events	23800	24399	22731	22221	29243	153287
	12%	12%	12%	12%	14%	32%
grade 7 events	18486	19020	19985	19023	21004	43466
	9%	10%	10%	10%	10%	9%

2.2 Compared Parameters

Parameter	Planned	Actual	Parameter	Planned	Actual
Instrument	ACIS	ACIS	Obspar format version number	6	6
Detector	ACIS-012367	ACIS-012367	Obspar file type	PREDICTED	ACTUAL
Grating	NONE	NONE	Obspar update status	NONE	UPDATED
Data mode	FAINT	FAINT	On-chip summing requested	N	N
Observation mode	SECONDARY	SECONDARY	Subarray requested	NONE	NONE
Pointing RA	0	240.0052724922875	Alternating exposures requested	N	N
Pointing Dec	0	-5.028227867052284	Primary exposure time	0.000000	3.2
Pointing Roll	0.0	247.9221226400496			
SIM focus pos (mm)	-0.782348	-0.7809083437167272			
SIM defocus (mm)	0	0.7524282956875696			
SIM translation stage pos (mm)	-233.592463	250.466033080201			
SIM translation stage offset (mm)	0	-0.01005468664627074			
Observation start time	111706436.316	111706435.54788			
Observation start date	2001-07-16T21:33:56	2001-07-16T21:33:55			
Observation end time	111717094.267	111717093.4983			
Observation end date	2001-07-17T00:31:34	2001-07-17T00:31:33			
Read mode	TIMED	TIMED			

2.3 Aspect

2.4 Star Slots

2.5 FID Slots

A Summary

A.1 Status

V&V Scientist	Jen Lauer
V&V Date (YYYY-MM-DD)	2006.12.14
V&V Edition	1
V&V Disposition and Status	OK
V&V Charge Time	6.82077832

A.2 Comments