

V&V Reference Report

L2 ASCDS Version : 7.6.9

Observation 61538 - L2 Version 001
Chandra X-Ray Center

L2 Processing Date : Dec 14 2006

Contents

1	Front	2
2	OBI	3
2.1	OBI	3
2.1.1	Images	3
2.1.2	Bias	3
2.1.3	Parameters	4
2.1.4	Events	4
2.2	Compared Parameters	5
2.3	Aspect	6
2.4	Star Slots	8
2.5	FID Slots	8
A	Summary	9
A.1	Status	9
A.2	Comments	9

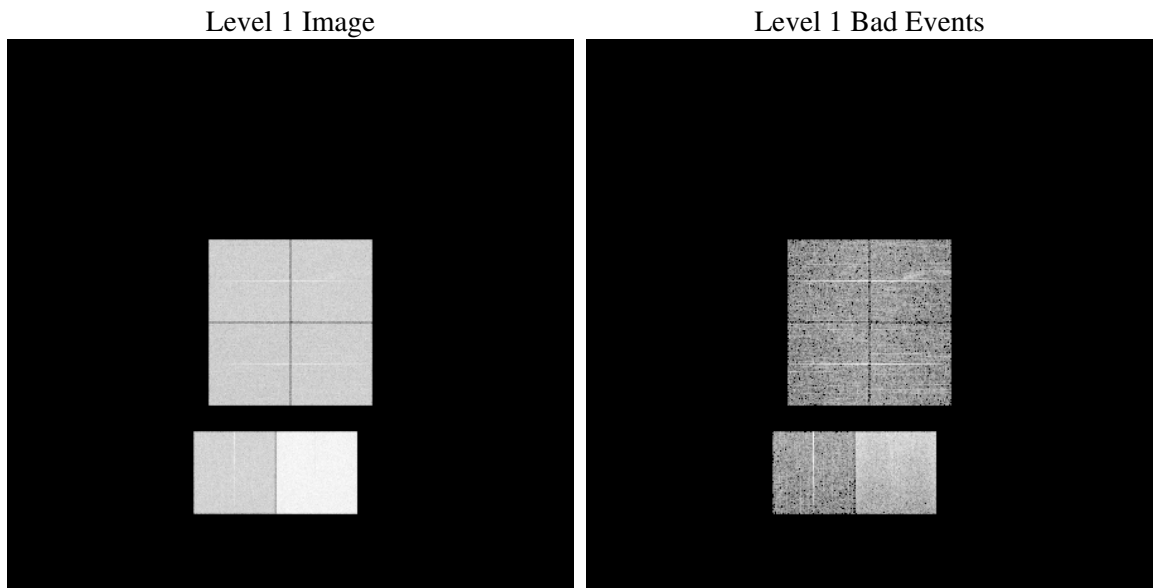
1 Front

seq_num	
obs_id	61538
title	ACIS-012367 diagnostics
observer	CHANDRA engineering request/realtime commanding
object	
dtcycle	0
cycle	P
ra_targ	0.0
dec_targ	0.0
ra_nom	289.03586497112
dec_nom	-36.99949263272
roll_nom	328.32220779056
revision	2
ontime	7529.219895497
livetime	7433.8803796282
ontime0	2927.0659448653
ontime1	2962.7586741447
ontime2	2703.5170231014
ontime3	2832.9944527596
ontime6	3095.722765848
ontime7	7529.219895497
l2events	1307055

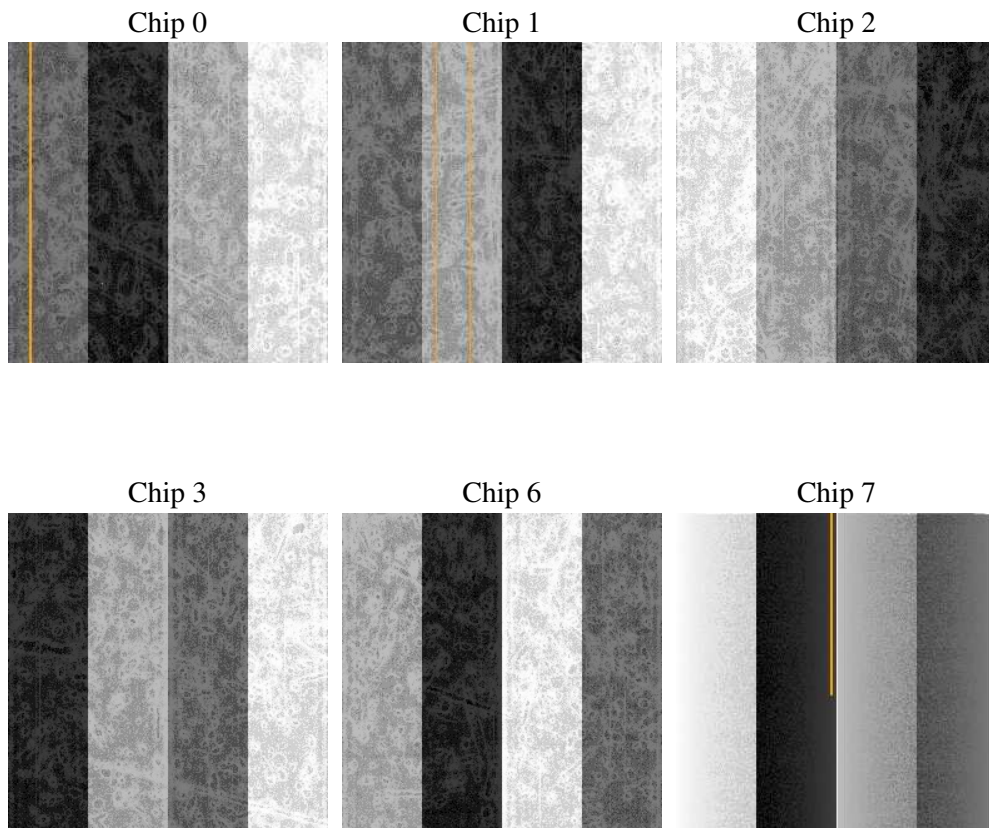
2 OBI

2.1 OBI

2.1.1 Images



2.1.2 Bias



2.1.3 Parameters

obi_num	0
ascdsver	7.6.9
caldsver	3.2.4
date	2006-12-14T17:05:38
revision	2

sched_exp_time	0.0
ontime	7532.0919234008
ontime0	2929.8969327658
ontime1	2965.5486220568
ontime2	2706.2659310102
ontime3	2835.9075206667
ontime6	3098.4306337535
ontime7	7532.0919234008
l1events	1545712

2.1.4 Events

	ccd 0	ccd 1	ccd 2	ccd 3	ccd 6	ccd 7
level 1 events	202340	206321	190390	199935	222788	523938
rejected events	23172	24056	23685	24728	25588	62162
rejected %	11%	11%	12%	12%	11%	11%

	ccd 0	ccd 1	ccd 2	ccd 3	ccd 6	ccd 7
grade 0 events	98098	100240	91706	97576	106144	80430
	48%	48%	48%	48%	47%	15%
grade 1 events	466	504	433	475	501	182
	0%	0%	0%	0%	0%	0%
grade 2 events	32599	32679	30770	31572	35794	142185
	16%	15%	16%	15%	16%	27%
grade 3 events	11167	11414	10303	10816	11789	33476
	5%	5%	5%	5%	5%	6%
grade 4 events	11069	11425	10183	10801	11696	32703
	5%	5%	5%	5%	5%	6%
grade 5 events	1618	1680	1552	1681	1954	8118
	0%	0%	0%	0%	0%	1%
grade 6 events	26407	26702	23938	24621	31994	173172
	13%	12%	12%	12%	14%	33%
grade 7 events	20916	21677	21505	22393	22916	53672
	10%	10%	11%	11%	10%	10%

2.2 Compared Parameters

Parameter	Planned	Actual	Parameter	Planned	Actual
Instrument	ACIS	ACIS	Obspar format version number	6	6
Detector	ACIS-012367	ACIS-012367	Obspar file type	PREDICTED	ACTUAL
Grating	NONE	NONE	Obspar update status	NONE	UPDATED
Data mode	FAINT	FAINT	On-chip summing requested	N	N
Observation mode	SECONDARY	SECONDARY	Subarray requested	NONE	NONE
Pointing RA	0	289.0358649711214	Alternating exposures requested	N	N
Pointing Dec	0	-36.99949263271955	Primary exposure time	0.000000	3.2
Pointing Roll	0.0	328.3222077905593			
SIM focus pos (mm)	-0.782348	-0.7809083437167272			
SIM defocus (mm)	0	0.7524282956875696			
SIM translation stage pos (mm)	-233.592463	250.466033080201			
SIM translation stage offset (mm)	0	-0.01005468664627074			
Observation start time	111968192.627	111968191.85812			
Observation start date	2001-07-19T22:16:33	2001-07-19T22:16:31			
Observation end time	111990617.577	111990616.809			
Observation end date	2001-07-20T04:30:18	2001-07-20T04:30:16			
Read mode	TIMED	TIMED			

2.3 Aspect

2.4 Star Slots

2.5 FID Slots

A Summary

A.1 Status

V&V Scientist	Beth Sundheim
V&V Date (YYYY-MM-DD)	2006.12.14
V&V Edition	1
V&V Disposition and Status	OK
V&V Charge Time	7.52921989

A.2 Comments

Focal plane temperature is warmer than -118.7 C degrees during the entire observation. This temperature is the upper limit of the verified ACIS calibration for the front-illuminated chips.