

# V&V Reference Report

## L2 ASCDS Version : 8.4.5

Observation 61533 - L2 Version 3  
Chandra X-Ray Center

L2 Processing Date : Sep 21 2012

## Contents

<b>1</b>	<b>Front</b>	<b>2</b>
<b>2</b>	<b>OBI</b>	<b>3</b>
2.1	OBI . . . . .	3
2.1.1	Images . . . . .	3
2.1.2	Bias . . . . .	3
2.1.3	Parameters . . . . .	4
2.1.4	Events . . . . .	4
2.2	Compared Parameters . . . . .	5
2.3	Star Slots . . . . .	6
2.4	FID Slots . . . . .	6
<b>A</b>	<b>Summary</b>	<b>7</b>
A.1	Status . . . . .	7
A.2	Comments . . . . .	7

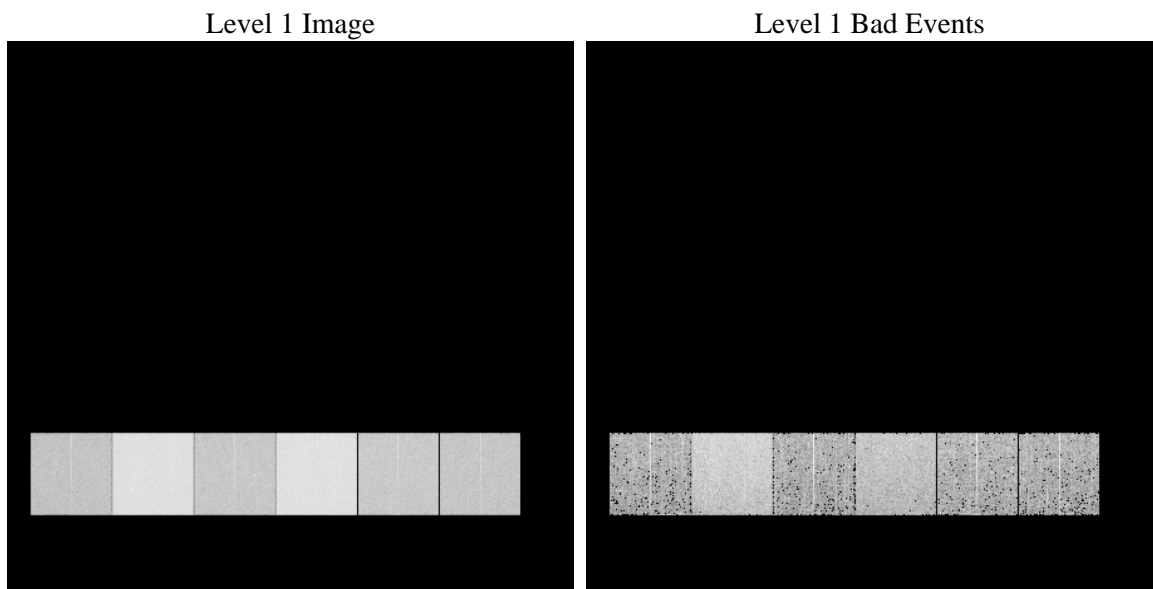
# 1 Front

seq_num	&#160	Sequence number
obs_id	61533	Observation id
title	ACIS-456789 diagnostics	Proposal title
observer	CHANDRA engineering request/realtime commanding	Principal investig
object	&#160	Source name
dtcycle	0	&#160
cycle	P	events from which exps? Prim/Second/Both
ra_targ	0.0	Observer's specified target RA [deg]
dec_targ	0.0	Observer's specified target Dec [deg]
ra_nom	350.97028307787	Nominal RA [deg]
dec_nom	24.00914728659	Nominal Dec [deg]
roll_nom	128.69315282456	Nominal Roll [deg]
revision	3	Processing version of data
ontime	6222.1815951765	Sum of GTIs [s]
livetime	6143.3925852704	Livetime [s]
ontime4	2255.3229572624	Sum of GTIs [s]
ontime5	6706.5762211084	Sum of GTIs [s]
ontime6	2504.8416177779	Sum of GTIs [s]
ontime7	6222.1815951765	Sum of GTIs [s]
ontime8	2593.7593638897	Sum of GTIs [s]
ontime9	2420.4517172575	Sum of GTIs [s]
l2events	1317396	Number of level 2 events

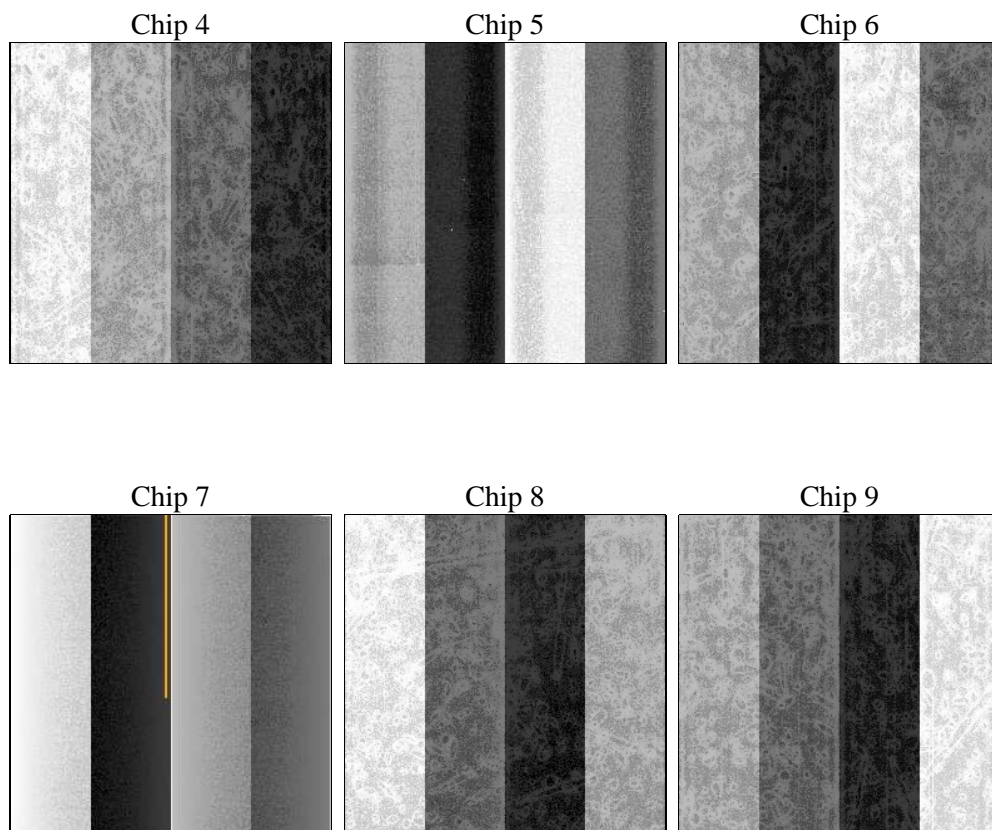
## 2 OBI

### 2.1 OBI

#### 2.1.1 Images



#### 2.1.2 Bias



### 2.1.3 Parameters

obi_num	0	Obi number	sched_exp_time	0.0	[s] Scheduled observation exposure time
ascdsver	8.4.5	Processing system revision	ontime	6222.1815951765	Sum of GTIs [s]
caldsver	4.5.1.1	&#160	ontime4	2255.3229572624	Sum of GTIs [s]
date	2012-09-21T02:45:32	Date and time of file creation	ontime5	6706.5762211084	Sum of GTIs [s]
revision	3	Processing version of data	ontime6	2504.8416177779	Sum of GTIs [s]
			ontime7	6222.1815951765	Sum of GTIs [s]
			ontime8	2593.7593638897	Sum of GTIs [s]
			ontime9	2420.4517172575	Sum of GTIs [s]
			l1events	1548399	Number of level 1 events

### 2.1.4 Events

	ccd 4	ccd 5	ccd 6	ccd 7	ccd 8	ccd 9		ccd 4	ccd 5	ccd 6	ccd 7	ccd 8	ccd 9
level 1 events	153615	420346	182315	431596	190703	169824	grade 0 events	73720	78666	87749	100005	92532	82129
rejected events	21464	53196	21491	35251	23617	20942		47%	18%	48%	23%	48%	48%
rejected %	13%	12%	11%	8%	12%	12%	grade 1 events	371	254	400	289	442	423
								0%	0%	0%	0%	0%	0%
							grade 2 events	24453	141951	28040	87695	29500	26228
								15%	33%	15%	20%	15%	15%
							grade 3 events	7911	20794	9869	40188	10292	9067
								5%	4%	5%	9%	5%	5%
							grade 4 events	7858	20355	9687	40024	10557	9071
								5%	4%	5%	9%	5%	5%
							grade 5 events	1355	9599	1512	7295	1729	1535
								0%	2%	0%	1%	0%	0%
							grade 6 events	18209	105555	25479	128433	24419	22387
								11%	25%	13%	29%	12%	13%
							grade 7 events	19738	43172	19579	27667	21232	18984
								12%	10%	10%	6%	11%	11%

## 2.2 Compared Parameters

Parameter	Planned	Actual	Parameter	Planned	Actual
Instrument	ACIS	ACIS	Obspar format version number	7	7
Detector	ACIS-456789	ACIS-456789	Obspar file type	PREDICTED	ACTUAL
Grating	NONE	NONE	Obspar update status	NONE	UPDATED
Data mode	FAINT	FAINT	On-chip summing requested	N	N
Observation mode	SECONDARY	SECONDARY	Subarray requested	NONE	NONE
[deg] Pointing RA	0	350.9702830778671	Alternating exposures requested	N	N
[deg] Pointing Dec	0	24.0091472865903	[s] Primary exposure time	3.2	3.2
[deg] Pointing Roll	0.0	128.6931528245623			
[mm] SIM focus pos	-0.684267	-0.6828225247311905			
[mm] SIM defocus	0	0.8505141146731063			
[mm] SIM translation stage pos	-190.132523	250.466033080201			
[mm] SIM translation stage offset	0	-0.01005468664627074			
[s] Observation start time (MET)	112198555.235587	112198554.46714			
Observation start date	2001-07-22T14:15:55	2001-07-22T14:15:54			
[s] Observation end time (MET)	112219867.036427	112219866.26797			
Observation end date	2001-07-22T20:11:07	2001-07-22T20:11:06			
Read mode	TIMED	TIMED			

## 2.3 Star Slots

## 2.4 FID Slots

## A Summary

### A.1 Status

V&V Scientist	Beth Sundheim
V&V Date (YYYY-MM-DD)	2012.09.25
V&V Edition	1
V&V Disposition and Status	OK
V&V Charge Time	6.2221815951765

### A.2 Comments