

V&V Reference Report

L2 ASCDS Version : 7.6.9

Observation 61517 - L2 Version 001
Chandra X-Ray Center

L2 Processing Date : Dec 16 2006

Contents

1	Front	2
2	OBI	3
2.1	OBI	3
2.1.1	Images	3
2.1.2	Bias	3
2.1.3	Parameters	4
2.1.4	Events	4
2.2	Compared Parameters	5
2.3	Aspect	6
2.4	Star Slots	8
2.5	FID Slots	8
A	Summary	9
A.1	Status	9
A.2	Comments	9

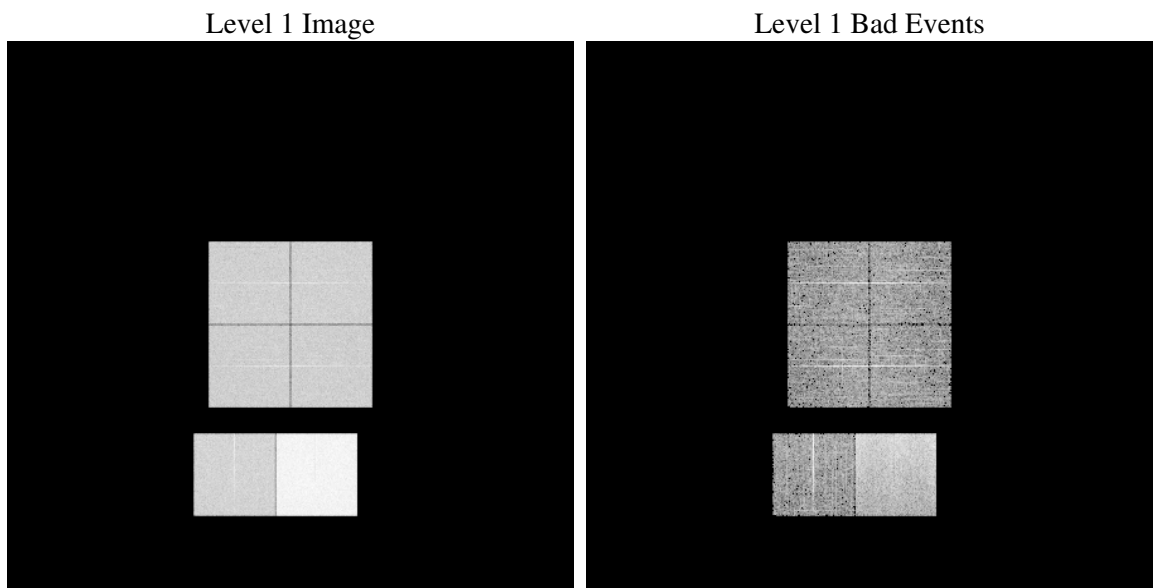
1 Front

seq_num	
obs_id	61517
title	ACIS-012367 diagnostics
observer	CHANDRA engineering request/realtime commanding
object	
dtcycle	0
cycle	P
ra_targ	0.0
dec_targ	0.0
ra_nom	333.02094653107
dec_nom	-53.974121175493
roll_nom	31.794740164857
revision	2
ontime	7466.0660187006
livetime	7371.5261952466
ontime0	2903.1840625852
ontime1	2961.5636131465
ontime2	2754.1786616743
ontime3	2789.6657623053
ontime6	3039.4303041995
ontime7	7466.0660187006
l2events	1301896

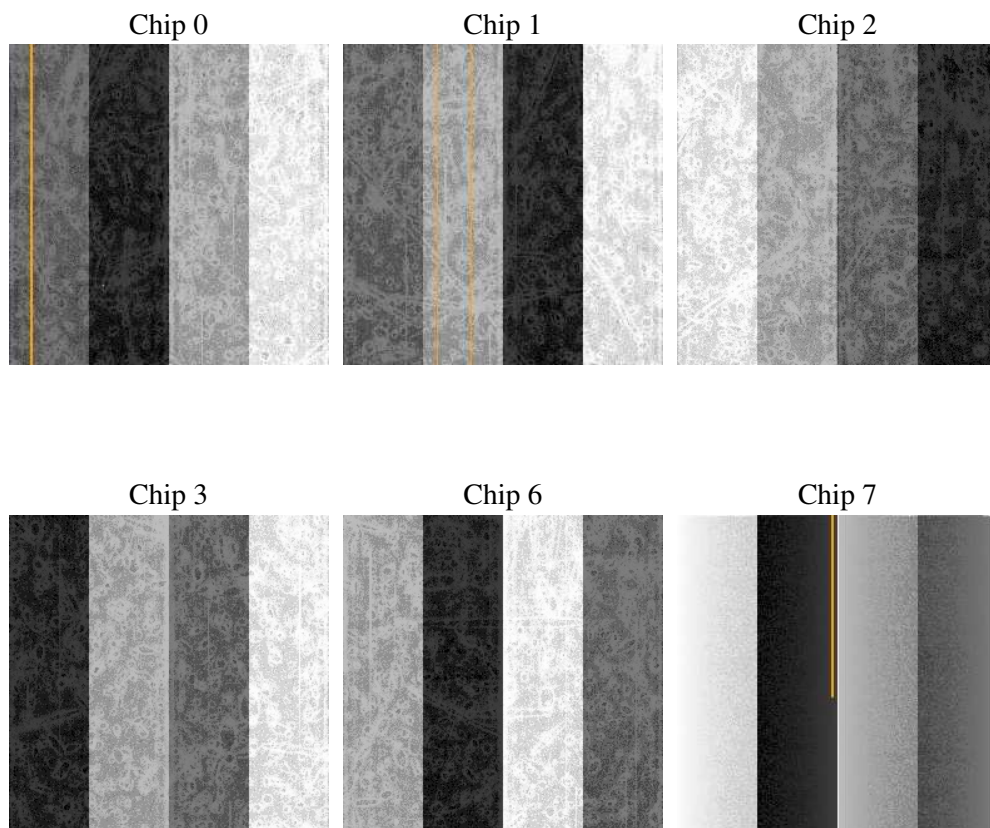
2 OBI

2.1 OBI

2.1.1 Images



2.1.2 Bias



2.1.3 Parameters

obi_num	0
ascdsver	7.6.9
caldbver	3.2.4
date	2006-12-16T05:54:25
revision	2

sched_exp_time	0.0
ontime	7548.2981460392
ontime0	2939.6203918904
ontime1	2997.9589024633
ontime2	2787.2918211669
ontime3	2819.7020518035
ontime6	3072.5024735183
ontime7	7548.2981460392
l1events	1546502

2.1.4 Events

	ccd 0	ccd 1	ccd 2	ccd 3	ccd 6	ccd 7
level 1 events	202430	206783	196170	198442	222722	519955
rejected events	25035	25592	24850	25441	26714	62449
rejected %	12%	12%	12%	12%	11%	12%

	ccd 0	ccd 1	ccd 2	ccd 3	ccd 6	ccd 7
grade 0 events	98960	101176	96737	97601	108031	85026
	48%	48%	49%	49%	48%	16%
grade 1 events	523	529	498	525	561	210
	0%	0%	0%	0%	0%	0%
grade 2 events	31698	32113	30196	30828	34400	138776
	15%	15%	15%	15%	15%	26%
grade 3 events	11339	11761	11001	11040	12127	34799
	5%	5%	5%	5%	5%	6%
grade 4 events	11383	11729	10670	11049	12146	34343
	5%	5%	5%	5%	5%	6%
grade 5 events	1600	1694	1596	1666	1885	8225
	0%	0%	0%	0%	0%	1%
grade 6 events	26218	26681	24785	24289	31310	169618
	12%	12%	12%	12%	14%	32%
grade 7 events	20709	21100	20687	21444	22262	48958
	10%	10%	10%	10%	9%	9%

2.2 Compared Parameters

Parameter	Planned	Actual	Parameter	Planned	Actual
Instrument	ACIS	ACIS	Obspar format version number	6	6
Detector	ACIS-012367	ACIS-012367	Obspar file type	PREDICTED	ACTUAL
Grating	NONE	NONE	Obspar update status	NONE	UPDATED
Data mode	FAINT	FAINT	On-chip summing requested	N	N
Observation mode	SECONDARY	SECONDARY	Subarray requested	NONE	NONE
Pointing RA	0	333.0209465310689	Alternating exposures requested	N	N
Pointing Dec	0	-53.97412117549267	Primary exposure time	3.2	3.2
Pointing Roll	0.0	31.79474016485736			
SIM focus pos (mm)	-0.782348	-0.6828225247311905			
SIM defocus (mm)	0	0.8505141146731063			
SIM translation stage pos (mm)	-233.592463	250.466033080201			
SIM translation stage offset (mm)	0	-0.01005468664627074			
Observation start time	113112535.471551	113112534.70305			
Observation start date	2001-08-02T04:08:55	2001-08-02T04:08:54			
Observation end time	113136873.072484	113136872.30401			
Observation end date	2001-08-02T10:54:33	2001-08-02T10:54:32			
Read mode	TIMED	TIMED			

2.3 Aspect

2.4 Star Slots

2.5 FID Slots

A Summary

A.1 Status

V&V Scientist	Beth Sundheim
V&V Date (YYYY-MM-DD)	2006.12.17
V&V Edition	1
V&V Disposition and Status	OK
V&V Charge Time	7.46606601

A.2 Comments