

V&V Reference Report

L2 ASCDS Version : 8.4.5

Observation 61512 - L2 Version 3
Chandra X-Ray Center

L2 Processing Date : Sep 21 2012

Contents

1	Front	2
2	OBI	3
2.1	OBI	3
2.1.1	Images	3
2.1.2	Bias	3
2.1.3	Parameters	4
2.1.4	Events	4
2.2	Compared Parameters	5
2.3	Star Slots	6
2.4	FID Slots	6
A	Summary	7
A.1	Status	7
A.2	Comments	7

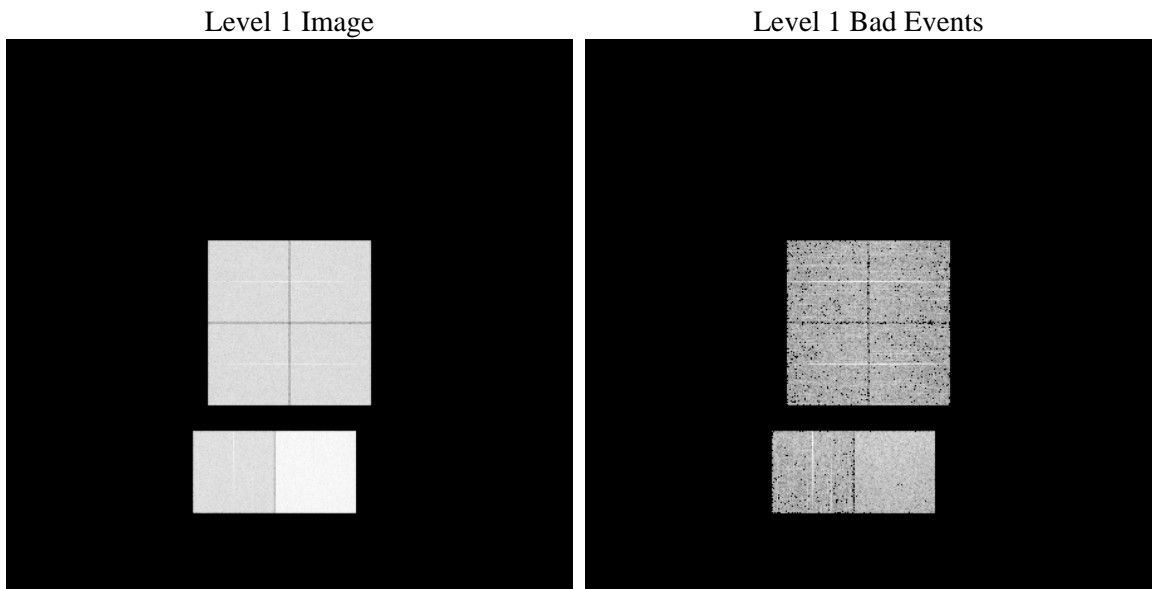
1 Front

seq_num	 	Sequence number
obs_id	61512	Observation id
title	ACIS-012367 diagnostics	Proposal title
observer	CHANDRA engineering request/realtime commanding	Principal investig
object	 	Source name
dtcycle	0	
cycle	P	events from which exps? Prim/Second/Both
ra_targ	0.0	Observer's specified target RA [deg]
dec_targ	0.0	Observer's specified target Dec [deg]
ra_nom	354.97061397414	Nominal RA [deg]
dec_nom	20.007673572186	Nominal Dec [deg]
roll_nom	131.74039145819	Nominal Roll [deg]
revision	3	Processing version of data
ontime	6791.7087172717	Sum of GTIs [s]
livetime	6705.7080120176	Livetime [s]
ontime0	2654.4090924263	Sum of GTIs [s]
ontime1	2696.5426122099	Sum of GTIs [s]
ontime2	2615.516263634	Sum of GTIs [s]
ontime3	2596.0705217421	Sum of GTIs [s]
ontime6	2850.5082990676	Sum of GTIs [s]
ontime7	6791.7087172717	Sum of GTIs [s]
l2events	1230689	Number of level 2 events

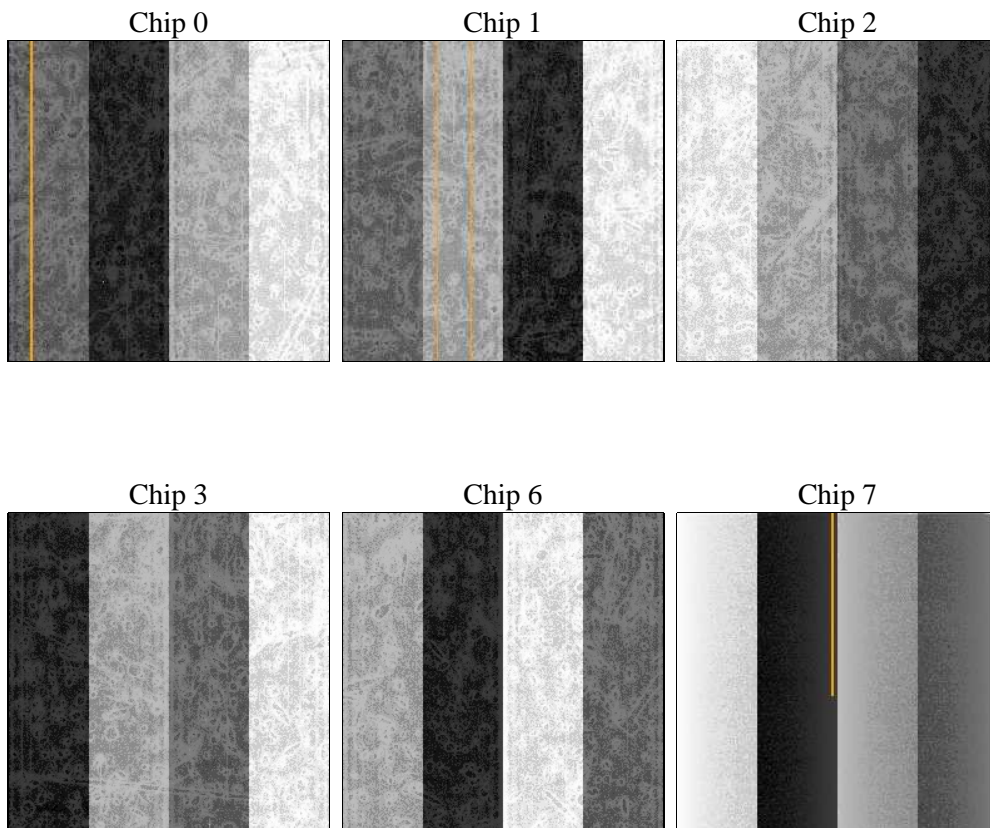
2 OBI

2.1 OBI

2.1.1 Images



2.1.2 Bias



2.1.3 Parameters

obi_num	0	Obi number	sched_exp_time	0.0	[s] Scheduled observation exposure time
ascdsver	8.4.5	Processing system revision	ontime	6791.7087172717	Sum of GTIs [s]
caldsver	4.5.1.1	 	ontime0	2654.4090924263	Sum of GTIs [s]
date	2012-09-21T19:19:25	Date and time of file creation	ontime1	2696.5426122099	Sum of GTIs [s]
revision	3	Processing version of data	ontime2	2615.516263634	Sum of GTIs [s]
			ontime3	2596.0705217421	Sum of GTIs [s]
			ontime6	2850.5082990676	Sum of GTIs [s]
			ontime7	6791.7087172717	Sum of GTIs [s]
			l1events	1426036	Number of level 1 events

2.1.4 Events

	ccd 0	ccd 1	ccd 2	ccd 3	ccd 6	ccd 7		ccd 0	ccd 1	ccd 2	ccd 3	ccd 6	ccd 7
level 1 events	184352	188224	184595	183996	209678	475191	grade 0 events	89569	91997	90940	91043	100649	113210
rejected events	20725	21110	20804	21075	23822	36389		48%	48%	49%	49%	48%	23%
rejected %	11%	11%	11%	11%	11%	7%	grade 1 events	528	508	472	485	506	288
								0%	0%	0%	0%	0%	0%
							grade 2 events	29063	29606	28753	28590	32515	96892
								15%	15%	15%	15%	15%	20%
							grade 3 events	10384	10421	10371	10179	11450	44494
								5%	5%	5%	5%	5%	9%
							grade 4 events	10282	10533	10388	10384	11446	44281
								5%	5%	5%	5%	5%	9%
							grade 5 events	1476	1540	1423	1462	1664	7714
								0%	0%	0%	0%	0%	1%
							grade 6 events	24329	24642	23339	22725	29796	140134
								13%	13%	12%	12%	14%	29%
							grade 7 events	18721	18977	18909	19128	21652	28178
								10%	10%	10%	10%	10%	5%

2.2 Compared Parameters

Parameter	Planned	Actual	Parameter	Planned	Actual
Instrument	ACIS	ACIS	Obspar format version number	7	7
Detector	ACIS-012367	ACIS-012367	Obspar file type	PREDICTED	ACTUAL
Grating	NONE	NONE	Obspar update status	NONE	UPDATED
Data mode	FAINT	FAINT	On-chip summing requested	N	N
Observation mode	SECONDARY	SECONDARY	Subarray requested	NONE	NONE
[deg] Pointing RA	0	354.9706139741435	Alternating exposures requested	N	N
[deg] Pointing Dec	0	20.00767357218602	[s] Primary exposure time	0.000000	3.2
[deg] Pointing Roll	0.0	131.7403914581884			
[mm] SIM focus pos	-0.782348	-1.428180813131781			
[mm] SIM defocus	0	0.1051558262725154			
[mm] SIM translation stage pos	-233.592463	251.4516446784125			
[mm] SIM translation stage offset	0	-0.9956662848578048			
[s] Observation start time (MET)	113534124.138	113534123.36964			
Observation start date	2001-08-07T01:15:24	2001-08-07T01:15:23			
[s] Observation end time (MET)	113570696.14	113570695.37109			
Observation end date	2001-08-07T11:24:56	2001-08-07T11:24:55			
Read mode	TIMED	TIMED			

2.3 Star Slots

2.4 FID Slots

A Summary

A.1 Status

V&V Scientist	Jen Lauer
V&V Date (YYYY-MM-DD)	2012.09.25
V&V Edition	1
V&V Disposition and Status	OK
V&V Charge Time	6.7917087172717

A.2 Comments