

V&V Reference Report

L2 ASCDS Version : 8.4.5

Observation 61505 - L2 Version 3
Chandra X-Ray Center

L2 Processing Date : Sep 22 2012

Contents

1	Front	2
2	OBI	3
2.1	OBI	3
2.1.1	Images	3
2.1.2	Bias	3
2.1.3	Parameters	4
2.1.4	Events	4
2.2	Compared Parameters	5
2.3	Star Slots	6
2.4	FID Slots	6
A	Summary	7
A.1	Status	7
A.2	Comments	7

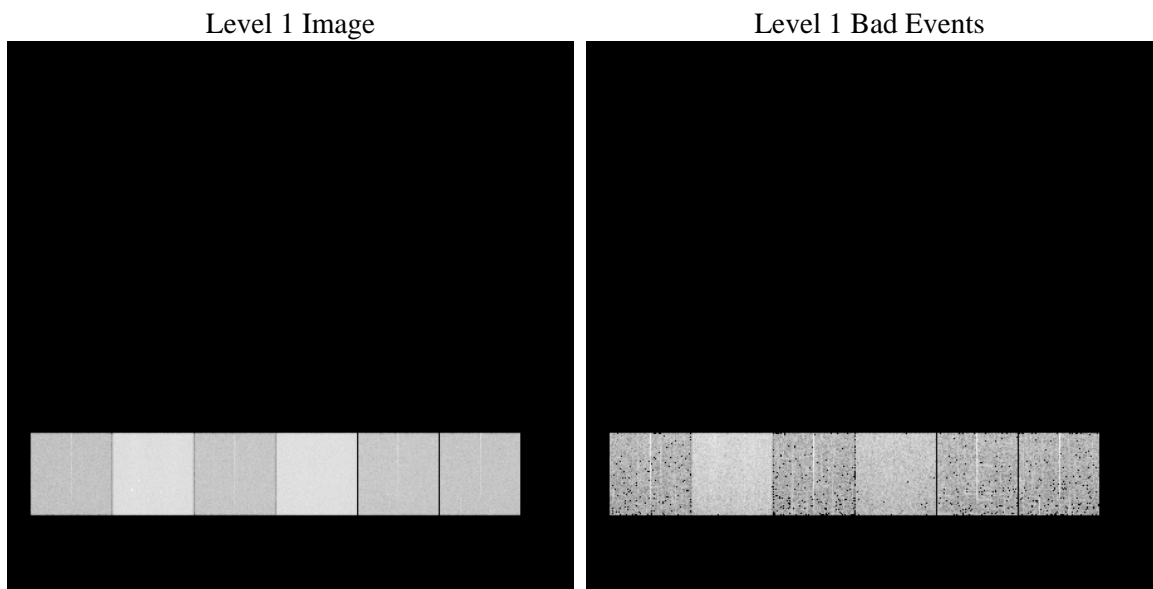
1 Front

seq_num	 	Sequence number
obs_id	61505	Observation id
title	ACIS-456789 diagnostics	Proposal title
observer	CHANDRA engineering request/realtime commanding	Principal investig
object	 	Source name
dtcycle	0	
cycle	P	events from which exps? Prim/Second/Both
ra_targ	0.0	Observer's specified target RA [deg]
dec_targ	0.0	Observer's specified target Dec [deg]
ra_nom	302.03190940524	Nominal RA [deg]
dec_nom	-32.009440813123	Nominal Dec [deg]
roll_nom	308.00636469564	Nominal Roll [deg]
revision	3	Processing version of data
ontime	6307.0093861669	Sum of GTIs [s]
livetime	6227.1462356942	Livetime [s]
ontime4	2307.6181814373	Sum of GTIs [s]
ontime5	6818.4700904638	Sum of GTIs [s]
ontime6	2550.6962804645	Sum of GTIs [s]
ontime7	6307.0093861669	Sum of GTIs [s]
ontime8	2628.4810807556	Sum of GTIs [s]
ontime9	2504.7928639501	Sum of GTIs [s]
l2events	1314145	Number of level 2 events

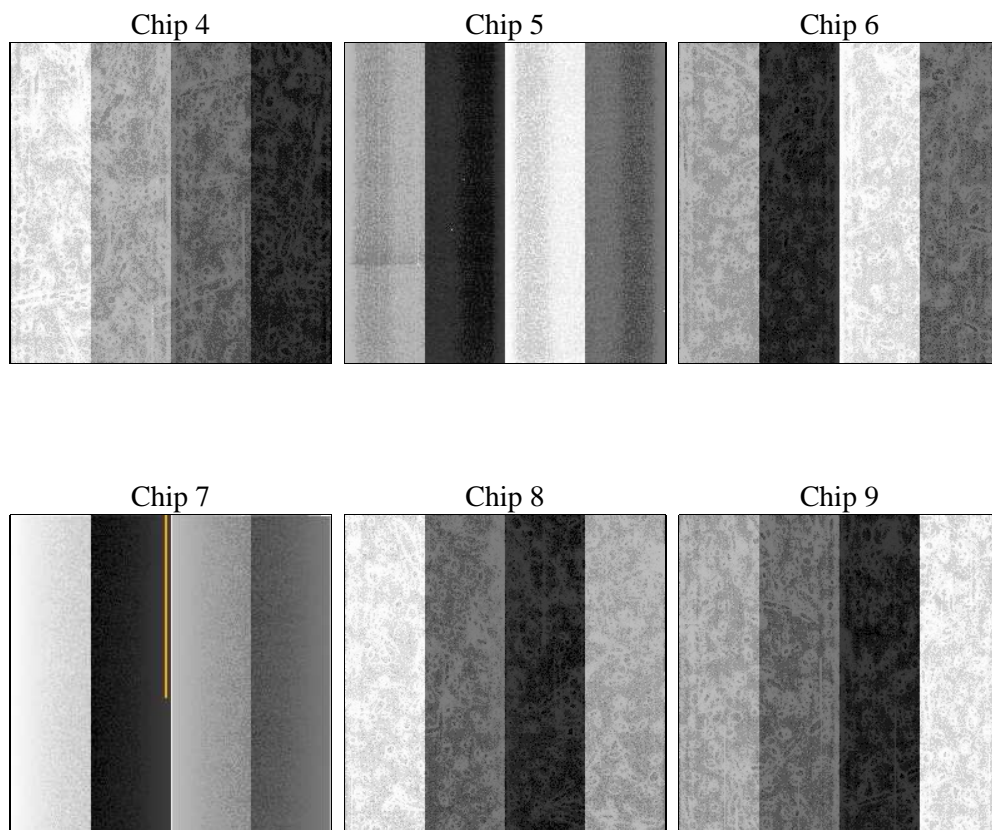
2 OBI

2.1 OBI

2.1.1 Images



2.1.2 Bias



2.1.3 Parameters

obi_num	0	Obi number	sched_exp_time	0.0	[s] Scheduled observation exposure time
ascdsver	8.4.5	Processing system revision	ontime	6307.0093861669	Sum of GTIs [s]
caldsver	4.5.1.1	 	ontime4	2307.6181814373	Sum of GTIs [s]
date	2012-09-22T08:02:22	Date and time of file creation	ontime5	6818.4700904638	Sum of GTIs [s]
revision	3	Processing version of data	ontime6	2550.6962804645	Sum of GTIs [s]
			ontime7	6307.0093861669	Sum of GTIs [s]
			ontime8	2628.4810807556	Sum of GTIs [s]
			ontime9	2504.7928639501	Sum of GTIs [s]
			l1events	1546478	Number of level 1 events

2.1.4 Events

	ccd 4	ccd 5	ccd 6	ccd 7	ccd 8	ccd 9		ccd 4	ccd 5	ccd 6	ccd 7	ccd 8	ccd 9
level 1 events	154583	420733	180463	430473	188668	171558	grade 0 events	72324	72654	86274	98701	91298	82409
rejected events	21774	55129	20990	35839	22587	20790		46%	17%	47%	22%	48%	48%
rejected %	14%	13%	11%	8%	11%	12%	grade 1 events	345	234	380	245	441	385
								0%	0%	0%	0%	0%	0%
							grade 2 events	26844	147172	28580	87664	29490	27221
								17%	34%	15%	20%	15%	15%
							grade 3 events	7720	19166	9526	39623	10370	9032
								4%	4%	5%	9%	5%	5%
							grade 4 events	7529	18541	9600	38284	10240	9035
								4%	4%	5%	8%	5%	5%
							grade 5 events	1336	9712	1558	7398	1699	1595
								0%	2%	0%	1%	0%	0%
							grade 6 events	18392	108071	25493	130362	24683	23071
								11%	25%	14%	30%	13%	13%
							grade 7 events	20093	45183	19052	28196	20447	18810
								12%	10%	10%	6%	10%	10%

2.2 Compared Parameters

Parameter	Planned	Actual	Parameter	Planned	Actual
Instrument	ACIS	ACIS	Obspar format version number	7	7
Detector	ACIS-456789	ACIS-456789	Obspar file type	PREDICTED	ACTUAL
Grating	NONE	NONE	Obspar update status	NONE	UPDATED
Data mode	FAINT	FAINT	On-chip summing requested	N	N
Observation mode	SECONDARY	SECONDARY	Subarray requested	NONE	NONE
[deg] Pointing RA	0	302.0319094052365	Alternating exposures requested	N	N
[deg] Pointing Dec	0	-32.00944081312263	[s] Primary exposure time	0.000000	3.2
[deg] Pointing Roll	0.0	308.0063646956374			
[mm] SIM focus pos	-0.684267	-0.6828225247311905			
[mm] SIM defocus	0	0.8505141146731063			
[mm] SIM translation stage pos	-190.132523	250.466033080201			
[mm] SIM translation stage offset	0	-0.01005468664627074			
[s] Observation start time (MET)	114024625.607	114024624.83896			
Observation start date	2001-08-12T17:30:26	2001-08-12T17:30:24			
[s] Observation end time (MET)	114045935.358	114045934.5898			
Observation end date	2001-08-12T23:25:35	2001-08-12T23:25:34			
Read mode	TIMED	TIMED			

2.3 Star Slots

2.4 FID Slots

A Summary

A.1 Status

V&V Scientist	Beth Sundheim
V&V Date (YYYY-MM-DD)	2012.09.25
V&V Edition	1
V&V Disposition and Status	OK
V&V Charge Time	6.3070093861669

A.2 Comments