

V&V Reference Report

L2 ASCDS Version : 7.6.9

Observation 61504 - L2 Version 001
Chandra X-Ray Center

L2 Processing Date : Dec 19 2006

Contents

1	Front	2
2	OBI	3
2.1	OBI	3
2.1.1	Images	3
2.1.2	Bias	3
2.1.3	Parameters	4
2.1.4	Events	4
2.2	Compared Parameters	5
2.3	Aspect	6
2.4	Star Slots	8
2.5	FID Slots	8
A	Summary	9
A.1	Status	9
A.2	Comments	9

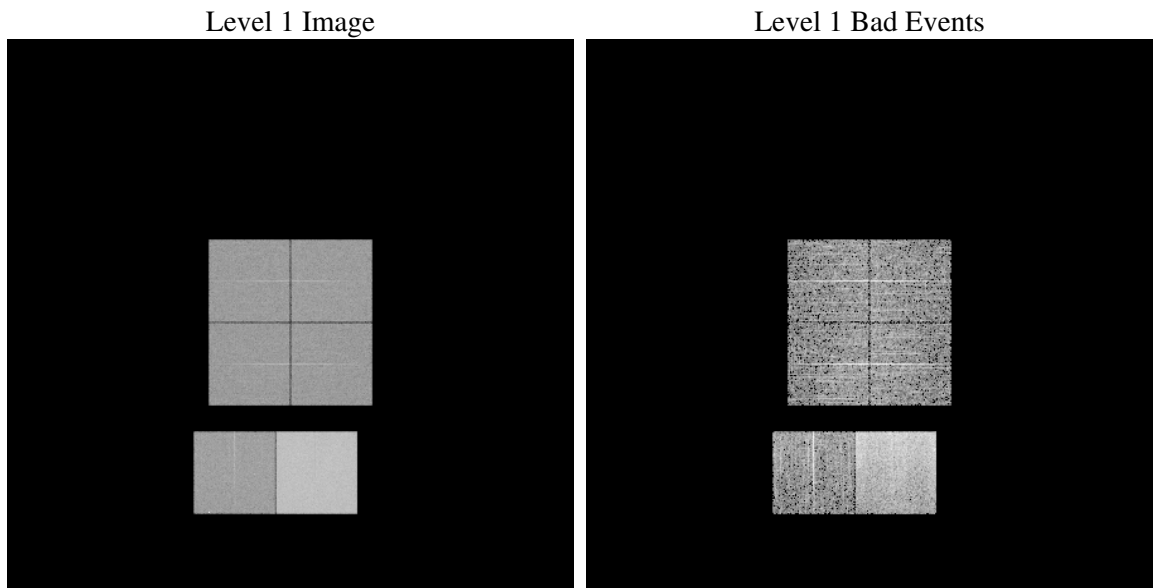
1 Front

seq_num	
obs_id	61504
title	ACIS-012367 diagnostics
observer	CHANDRA engineering request/realtime commanding
object	
dtcycle	0
cycle	P
ra_targ	0.0
dec_targ	0.0
ra_nom	332.03154808571
dec_nom	-49.979695697786
roll_nom	12.291975301049
revision	2
ontime	6197.4683791995
livetime	6118.9923029146
ontime0	2410.1763310432
ontime1	2486.5457725674
ontime2	2345.4377606809
ontime3	2329.0688492209
ontime6	2593.4997434616
ontime7	6197.4683791995
l2events	1085917

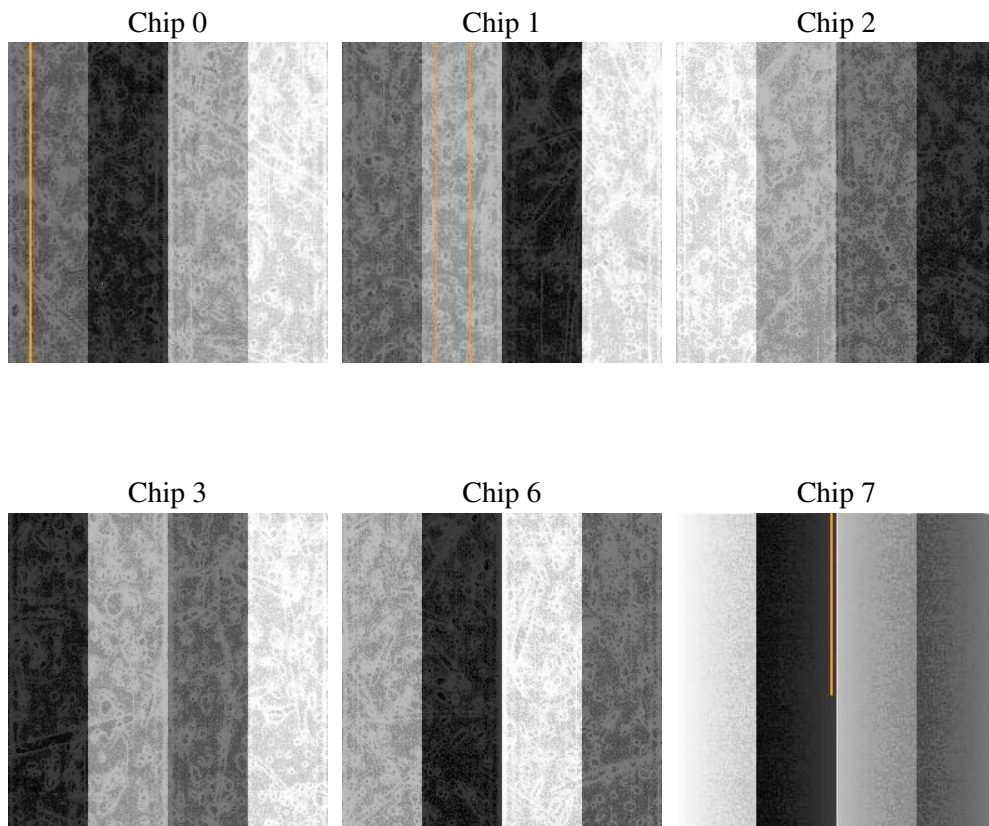
2 OBI

2.1 OBI

2.1.1 Images



2.1.2 Bias



2.1.3 Parameters

obi_num	0
ascdsver	7.6.9
caldbver	3.2.4
date	2006-12-19T18:27:16
revision	2

sched_exp_time	0.0
ontime	6200.038349852
ontime0	2411.3306239843
ontime1	2489.1157432199
ontime2	2346.5099736303
ontime3	2330.3052221686
ontime6	2596.0697141141
ontime7	6200.038349852
l1events	1273661

2.1.4 Events

	ccd 0	ccd 1	ccd 2	ccd 3	ccd 6	ccd 7
level 1 events	164924	169815	163035	162052	187013	426822
rejected events	18437	18591	19191	19438	20485	45108
rejected %	11%	10%	11%	11%	10%	10%

	ccd 0	ccd 1	ccd 2	ccd 3	ccd 6	ccd 7
grade 0 events	80738	83210	79874	79862	91393	73559
	48%	49%	48%	49%	48%	17%
grade 1 events	482	433	416	473	457	185
	0%	0%	0%	0%	0%	0%
grade 2 events	25964	26695	25345	25098	28495	112780
	15%	15%	15%	15%	15%	26%
grade 3 events	9231	9669	9106	9013	10182	29521
	5%	5%	5%	5%	5%	6%
grade 4 events	9246	9659	9024	8923	10241	29102
	5%	5%	5%	5%	5%	6%
grade 5 events	1258	1357	1219	1375	1550	6475
	0%	0%	0%	0%	0%	1%
grade 6 events	21308	21991	20495	19718	26217	136752
	12%	12%	12%	12%	14%	32%
grade 7 events	16697	16801	17556	17590	18478	38448
	10%	9%	10%	10%	9%	9%

2.2 Compared Parameters

Parameter	Planned	Actual	Parameter	Planned	Actual
Instrument	ACIS	ACIS	Obspar format version number	6	6
Detector	ACIS-012367	ACIS-012367	Obspar file type	PREDICTED	ACTUAL
Grating	NONE	NONE	Obspar update status	NONE	UPDATED
Data mode	FAINT	FAINT	On-chip summing requested	N	N
Observation mode	SECONDARY	SECONDARY	Subarray requested	NONE	NONE
Pointing RA	0	332.0315480857079	Alternating exposures requested	N	N
Pointing Dec	0	-49.97969569778642	Primary exposure time	0.000000	3.2
Pointing Roll	0.0	12.29197530104934			
SIM focus pos (mm)	-0.782348	-0.6828225247311905			
SIM defocus (mm)	0	0.8505141146731063			
SIM translation stage pos (mm)	-233.592463	250.466033080201			
SIM translation stage offset (mm)	0	-0.01005468664627074			
Observation start time	114219750.765	114219749.99665			
Observation start date	2001-08-14T23:42:31	2001-08-14T23:42:29			
Observation end time	114229892.116	114229891.34705			
Observation end date	2001-08-15T02:31:32	2001-08-15T02:31:31			
Read mode	TIMED	TIMED			

2.3 Aspect

2.4 Star Slots

2.5 FID Slots

A Summary

A.1 Status

V&V Scientist	Beth Sundheim
V&V Date (YYYY-MM-DD)	2006.12.19
V&V Edition	1
V&V Disposition and Status	OK
V&V Charge Time	6.19746837

A.2 Comments