

# V&V Reference Report

## L2 ASCDS Version : 8.4.5

Observation 61497 - L2 Version 3  
Chandra X-Ray Center

L2 Processing Date : Sep 22 2012

## Contents

<b>1</b>	<b>Front</b>	<b>2</b>
<b>2</b>	<b>OBI</b>	<b>3</b>
2.1	OBI . . . . .	3
2.1.1	Images . . . . .	3
2.1.2	Bias . . . . .	3
2.1.3	Parameters . . . . .	4
2.1.4	Events . . . . .	4
2.2	Compared Parameters . . . . .	5
2.3	Star Slots . . . . .	6
2.4	FID Slots . . . . .	6
<b>A</b>	<b>Summary</b>	<b>7</b>
A.1	Status . . . . .	7
A.2	Comments . . . . .	7

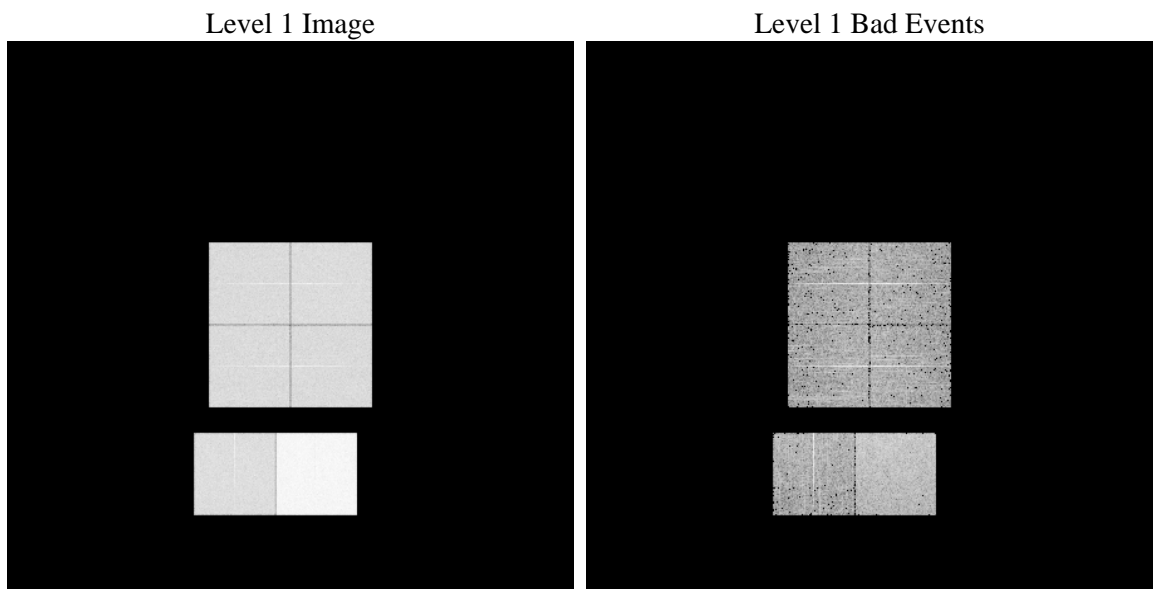
# 1 Front

seq_num	&#160	Sequence number
obs_id	61497	Observation id
title	ACIS-012367 diagnostics	Proposal title
observer	CHANDRA engineering request/realtime commanding	Principal investig
object	&#160	Source name
dtcycle	0	&#160
cycle	P	events from which exps? Prim/Second/Both
ra_targ	0.0	Observer's specified target RA [deg]
dec_targ	0.0	Observer's specified target Dec [deg]
ra_nom	353.97030400374	Nominal RA [deg]
dec_nom	17.003925144947	Nominal Dec [deg]
roll_nom	139.36593558817	Nominal Roll [deg]
revision	3	Processing version of data
ontime	7705.2415537387	Sum of GTIs [s]
livetime	7607.6731456458	Livetime [s]
ontime0	2899.1010172516	Sum of GTIs [s]
ontime1	3057.9525882602	Sum of GTIs [s]
ontime2	2879.4183339626	Sum of GTIs [s]
ontime3	2856.885507077	Sum of GTIs [s]
ontime6	3106.290096581	Sum of GTIs [s]
ontime7	7705.2415537387	Sum of GTIs [s]
l2events	1320748	Number of level 2 events

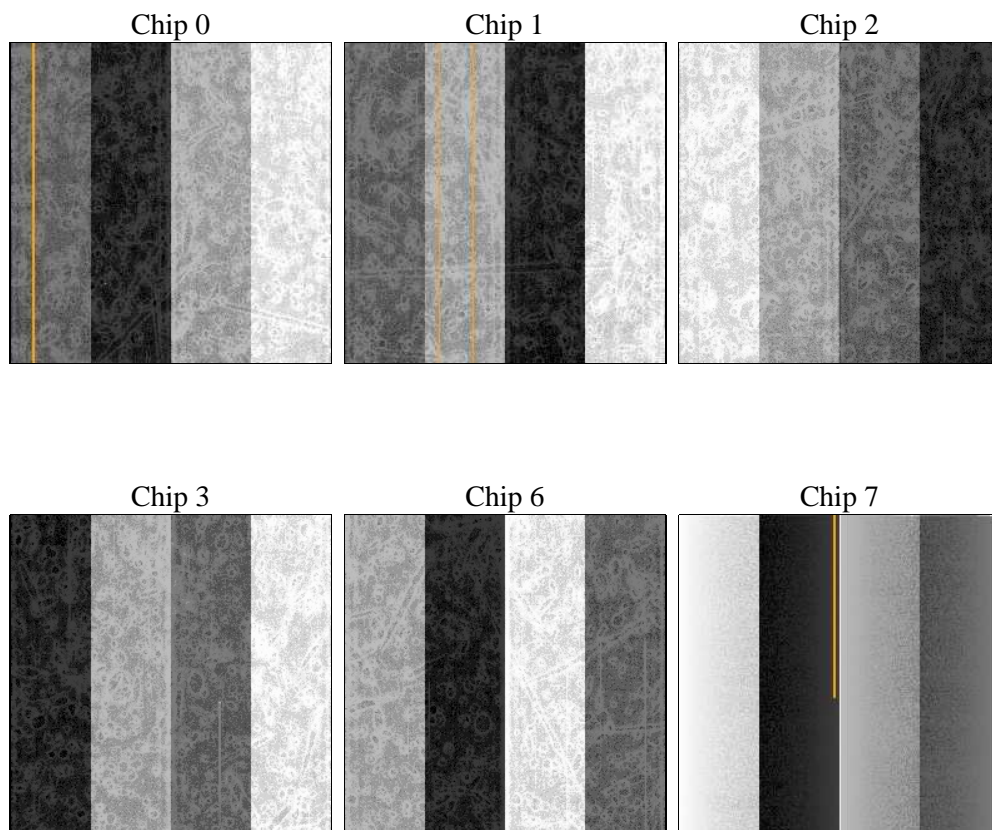
## 2 OBI

### 2.1 OBI

#### 2.1.1 Images



#### 2.1.2 Bias



### 2.1.3 Parameters

obi_num	0	Obi number	sched_exp_time	0.0	[s] Scheduled observation exposure time
ascdsver	8.4.5	Processing system revision	ontime	7705.2415537387	Sum of GTIs [s]
caldsver	4.5.1.1	&#160	ontime0	2899.1010172516	Sum of GTIs [s]
date	2012-09-22T12:32:08	Date and time of file creation	ontime1	3057.9525882602	Sum of GTIs [s]
revision	3	Processing version of data	ontime2	2879.4183339626	Sum of GTIs [s]
			ontime3	2856.885507077	Sum of GTIs [s]
			ontime6	3106.290096581	Sum of GTIs [s]
			ontime7	7705.2415537387	Sum of GTIs [s]
			l1events	1544865	Number of level 1 events

### 2.1.4 Events

	ccd 0	ccd 1	ccd 2	ccd 3	ccd 6	ccd 7		ccd 0	ccd 1	ccd 2	ccd 3	ccd 6	ccd 7
level 1 events	196975	207225	198905	197224	220851	523685	grade 0 events	95726	101722	96385	96187	105639	119790
rejected events	23603	23507	25360	25309	26714	44671		48%	49%	48%	48%	47%	22%
rejected %	11%	11%	12%	12%	12%	8%	grade 1 events	477	526	438	488	503	328
								0%	0%	0%	0%	0%	0%
							grade 2 events	31154	32825	31159	30641	34174	106255
								15%	15%	15%	15%	15%	20%
							grade 3 events	10763	11373	10730	11078	11766	47861
								5%	5%	5%	5%	5%	9%
							grade 4 events	10850	11750	10632	10889	12040	47585
								5%	5%	5%	5%	5%	9%
							grade 5 events	1609	1659	1592	1663	1913	8750
								0%	0%	0%	0%	0%	1%
							grade 6 events	25847	26807	25249	24071	31317	159688
								13%	12%	12%	12%	14%	30%
							grade 7 events	20549	20563	22720	22207	23499	33428
								10%	9%	11%	11%	10%	6%

## 2.2 Compared Parameters

Parameter	Planned	Actual	Parameter	Planned	Actual
Instrument	ACIS	ACIS	Obspar format version number	7	7
Detector	ACIS-012367	ACIS-012367	Obspar file type	PREDICTED	ACTUAL
Grating	NONE	NONE	Obspar update status	NONE	UPDATED
Data mode	FAINT	FAINT	On-chip summing requested	N	N
Observation mode	SECONDARY	SECONDARY	Subarray requested	NONE	NONE
[deg] Pointing RA	0	353.9703040037375	Alternating exposures requested	N	N
[deg] Pointing Dec	0	17.00392514494666	[s] Primary exposure time	0.000000	3.2
[deg] Pointing Roll	0.0	139.3659355881732			
[mm] SIM focus pos	-0.782348	-0.6828225247311905			
[mm] SIM defocus	0	0.8505141146731063			
[mm] SIM translation stage pos	-233.592463	250.466033080201			
[mm] SIM translation stage offset	0	-0.01005468664627074			
[s] Observation start time (MET)	114709190.334	114709189.56594			
Observation start date	2001-08-20T15:39:50	2001-08-20T15:39:49			
[s] Observation end time (MET)	114731617.335	114731616.56682			
Observation end date	2001-08-20T21:53:37	2001-08-20T21:53:36			
Read mode	TIMED	TIMED			

## **2.3 Star Slots**

## **2.4 FID Slots**

## A Summary

### A.1 Status

V&V Scientist	Beth Sundheim
V&V Date (YYYY-MM-DD)	2012.09.26
V&V Edition	1
V&V Disposition and Status	OK
V&V Charge Time	7.7052415537387

### A.2 Comments