

# V&V Reference Report

## L2 ASCDS Version : 7.6.9

Observation 61481 - L2 Version 001  
Chandra X-Ray Center

L2 Processing Date : Dec 31 2006

## Contents

<b>1</b>	<b>Front</b>	<b>2</b>
<b>2</b>	<b>OBI</b>	<b>3</b>
2.1	OBI . . . . .	3
2.1.1	Images . . . . .	3
2.1.2	Bias . . . . .	3
2.1.3	Parameters . . . . .	4
2.1.4	Events . . . . .	4
2.2	Compared Parameters . . . . .	5
2.3	Aspect . . . . .	6
2.4	Star Slots . . . . .	8
2.5	FID Slots . . . . .	8
<b>A</b>	<b>Summary</b>	<b>9</b>
A.1	Status . . . . .	9
A.2	Comments . . . . .	9

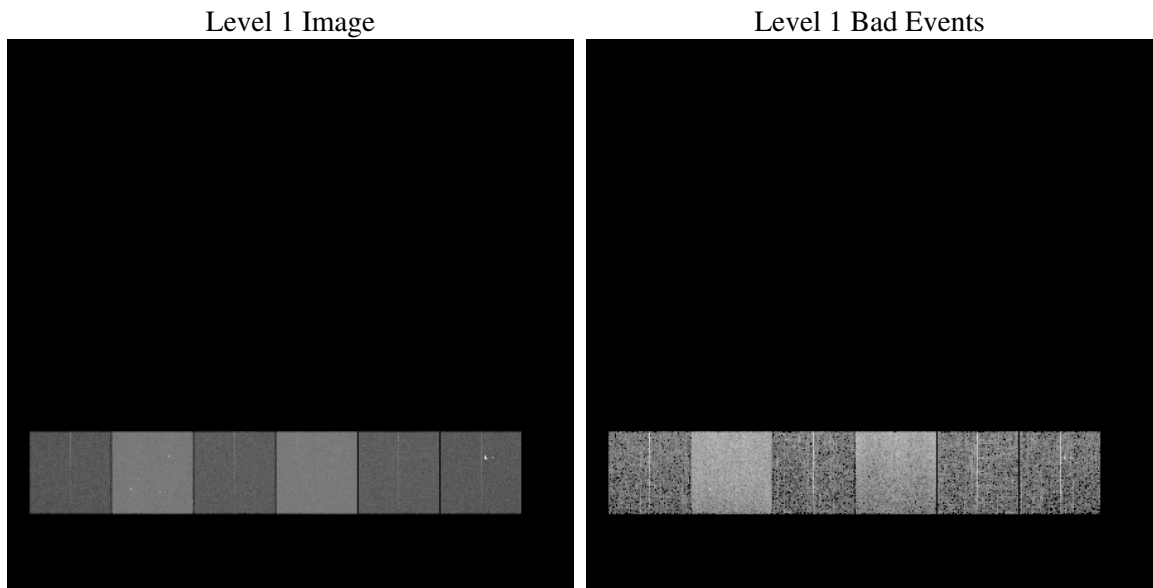
# 1 Front

seq_num	&#160
obs_id	61481
title	ACIS-456789 diagnostics
observer	CHANDRA engineering request/realtime commanding
object	&#160
dtcycle	0
cycle	P
ra_targ	0.0
dec_targ	0.0
ra_nom	0.69996079236489
dec_nom	17.429927731702
roll_nom	147.4084213911
revision	2
ontime	5774.8644884527
livetime	5701.739677094
ontime4	2203.4092882872
ontime5	6186.507581085
ontime6	2439.9638985693
ontime7	5774.8644884527
ontime8	2462.7332186699
ontime9	2287.5119587928
l2events	1202858

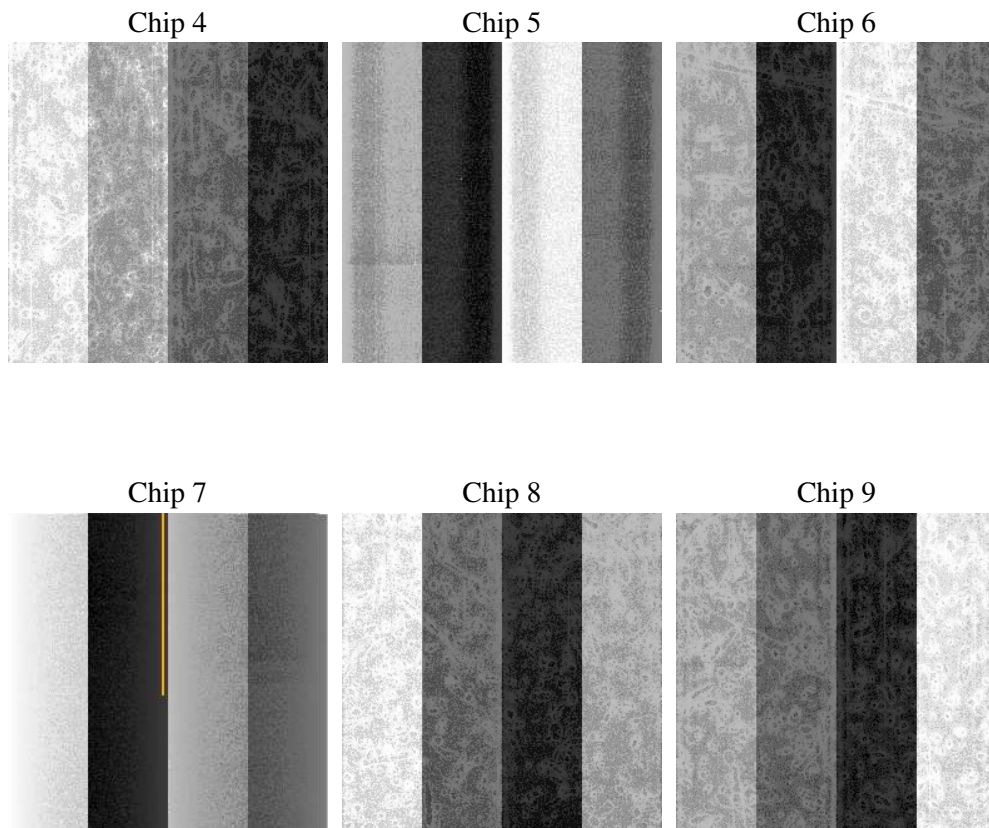
## 2 OBI

### 2.1 OBI

#### 2.1.1 Images



#### 2.1.2 Bias



### 2.1.3 Parameters

obi_num	0
ascdsver	7.6.9
caldsver	3.2.4
date	2006-12-31T12:44:17
revision	2

sched_exp_time	0.0
ontime	5775.4833314568
ontime4	2203.9050112963
ontime5	6187.0853840858
ontime6	2440.5006615818
ontime7	5775.4833314568
ontime8	2463.1879016757
ontime9	2288.1718418002
l1events	1426415

### 2.1.4 Events

	ccd 4	ccd 5	ccd 6	ccd 7	ccd 8	ccd 9
level 1 events	145747	379836	172347	387941	175529	165015
rejected events	18185	51812	18730	41066	20665	18077
rejected %	12%	13%	10%	10%	11%	10%

	ccd 4	ccd 5	ccd 6	ccd 7	ccd 8	ccd 9
grade 0 events	72127	44964	83843	65576	85338	83723
	49%	11%	48%	16%	48%	50%
grade 1 events	402	247	409	155	420	448
	0%	0%	0%	0%	0%	0%
grade 2 events	22362	154319	26753	103195	26938	25029
	15%	40%	15%	26%	15%	15%
grade 3 events	7877	11901	9440	26304	9795	8620
	5%	3%	5%	6%	5%	5%
grade 4 events	7851	11918	9426	26422	9927	8582
	5%	3%	5%	6%	5%	5%
grade 5 events	1121	6215	1363	5863	1522	1391
	0%	1%	0%	1%	0%	0%
grade 6 events	17345	104922	24155	125378	22866	20984
	11%	27%	14%	32%	13%	12%
grade 7 events	16662	45350	16958	35048	18723	16238
	11%	11%	9%	9%	10%	9%

## 2.2 Compared Parameters

Parameter	Planned	Actual	Parameter	Planned	Actual
Instrument	ACIS	ACIS	Obspar format version number	6	6
Detector	ACIS-456789	ACIS-456789	Obspar file type	PREDICTED	ACTUAL
Grating	NONE	NONE	Obspar update status	NONE	UPDATED
Data mode	FAINT	FAINT	On-chip summing requested	N	N
Observation mode	SECONDARY	SECONDARY	Subarray requested	NONE	NONE
Pointing RA	0	0.6999607923648856	Alternating exposures requested	N	N
Pointing Dec	0	17.42992773170225	Primary exposure time	3.2	3.2
Pointing Roll	0.0	147.4084213911046			
SIM focus pos (mm)	-0.684267	-1.523540733526241			
SIM defocus (mm)	0	0.009795905878055677			
SIM translation stage pos (mm)	-190.132523	250.466033080201			
SIM translation stage offset (mm)	0	-0.01005468664627074			
Observation start time	116275250.996261	116275250.22779			
Observation start date	2001-09-07T18:40:51	2001-09-07T18:40:50			
Observation end time	116314342.447806	116314341.67934			
Observation end date	2001-09-08T05:32:22	2001-09-08T05:32:21			
Read mode	TIMED	TIMED			

## 2.3 Aspect



## 2.4 Star Slots

## 2.5 FID Slots



## A Summary

### A.1 Status

V&V Scientist	Beth Sundheim
V&V Date (YYYY-MM-DD)	2007.01.04
V&V Edition	1
V&V Disposition and Status	OK
V&V Charge Time	5.77486448

### A.2 Comments