

# V&V Reference Report

## L2 ASCDS Version : 7.6.9

Observation 61449 - L2 Version 001  
Chandra X-Ray Center

L2 Processing Date : Jan 5 2007

## Contents

<b>1</b>	<b>Front</b>	<b>2</b>
<b>2</b>	<b>OBI</b>	<b>3</b>
2.1	OBI . . . . .	3
2.1.1	Images . . . . .	3
2.1.2	Bias . . . . .	3
2.1.3	Parameters . . . . .	4
2.1.4	Events . . . . .	4
2.2	Compared Parameters . . . . .	5
2.3	Aspect . . . . .	6
2.4	Star Slots . . . . .	8
2.5	FID Slots . . . . .	8
<b>A</b>	<b>Summary</b>	<b>9</b>
A.1	Status . . . . .	9
A.2	Comments . . . . .	9

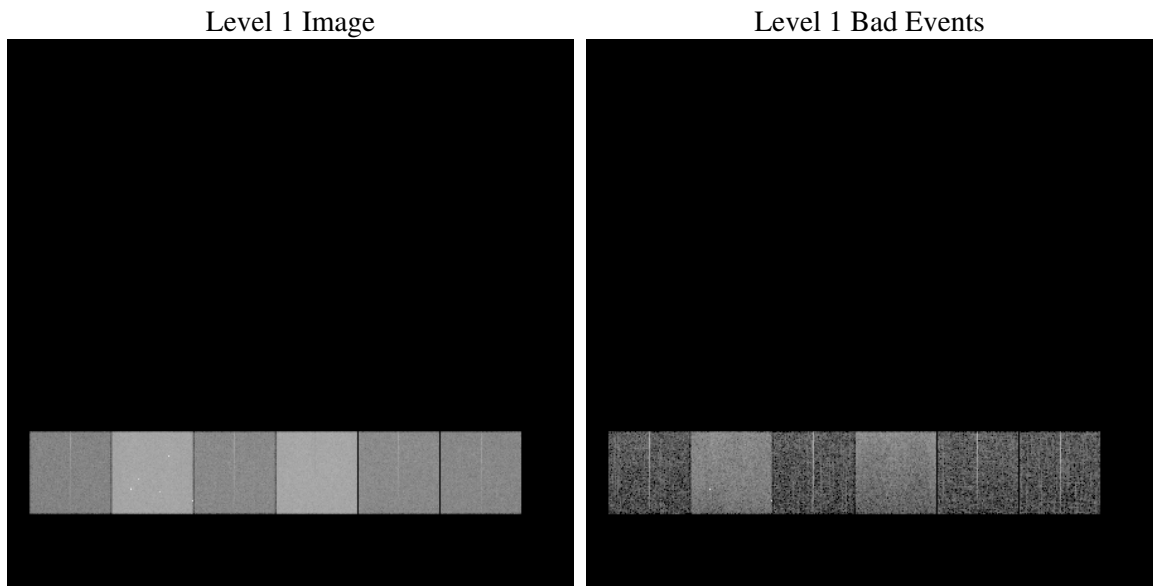
# 1 Front

seq_num	&#160
obs_id	61449
title	ACIS-456789 diagnostics
observer	CHANDRA engineering request/realtime commanding
object	&#160
dtcycle	0
cycle	P
ra_targ	0.0
dec_targ	0.0
ra_nom	136.99742341789
dec_nom	40.028555585581
roll_nom	61.233077618325
revision	2
ontime	6330.0938144326
livetime	6249.9383550294
ontime4	2463.7129057944
ontime5	6770.9054783732
ontime6	2700.2673565596
ontime7	6330.0938144326
ontime8	2768.4111766517
ontime9	2651.5291550159
l2events	1303538

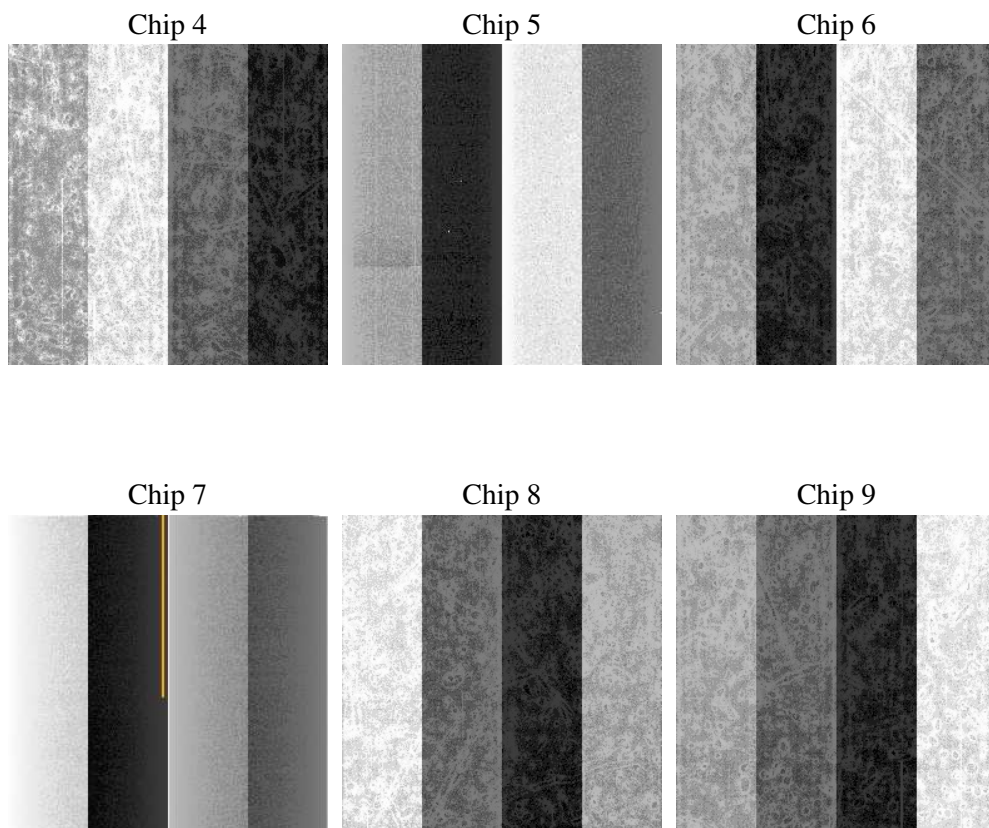
## 2 OBI

### 2.1 OBI

#### 2.1.1 Images



#### 2.1.2 Bias



### 2.1.3 Parameters

obi_num	1
ascdsver	7.6.9
caldsver	3.2.4
date	2007-01-05T18:19:21
revision	2

sched_exp_time	0.0
ontime	6332.9328602403
ontime4	2466.4288316071
ontime5	6773.7034841776
ontime6	2703.0243223757
ontime7	6332.9328602403
ontime8	2771.0860624611
ontime9	2654.409240827
l1events	1544078

### 2.1.4 Events

	ccd 4	ccd 5	ccd 6	ccd 7	ccd 8	ccd 9
level 1 events	161884	406467	187765	417109	192969	177884
rejected events	19615	56628	19797	44836	20837	20151
rejected %	12%	13%	10%	10%	10%	11%

	ccd 4	ccd 5	ccd 6	ccd 7	ccd 8	ccd 9
grade 0 events	80795	43258	91891	68923	95162	86701
	49%	10%	48%	16%	49%	48%
grade 1 events	372	320	433	115	446	417
	0%	0%	0%	0%	0%	0%
grade 2 events	25342	167600	29184	112064	30306	27711
	15%	41%	15%	26%	15%	15%
grade 3 events	8566	12167	10331	27979	10928	9696
	5%	2%	5%	6%	5%	5%
grade 4 events	8598	11796	10128	27393	10649	9674
	5%	2%	5%	6%	5%	5%
grade 5 events	1338	6931	1456	6300	1647	1539
	0%	1%	0%	1%	0%	0%
grade 6 events	19164	115178	26620	136113	25275	24147
	11%	28%	14%	32%	13%	13%
grade 7 events	17709	49217	17722	38222	18556	17999
	10%	12%	9%	9%	9%	10%

## 2.2 Compared Parameters

Parameter	Planned	Actual	Parameter	Planned	Actual
Instrument	ACIS	ACIS	Obspar format version number	6	6
Detector	ACIS-456789	ACIS-456789	Obspar file type	PREDICTED	ACTUAL
Grating	NONE	NONE	Obspar update status	NONE	UPDATED
Data mode	FAINT	FAINT	On-chip summing requested	N	N
Observation mode	SECONDARY	SECONDARY	Subarray requested	NONE	NONE
Pointing RA	0	136.9974234178925	Alternating exposures requested	N	N
Pointing Dec	0	40.02855558558096	Primary exposure time	0.000000	3.2
Pointing Roll	0.0	61.2330776183252			
SIM focus pos (mm)	-0.684267	-1.428180813131781			
SIM defocus (mm)	0	0.1051558262725154			
SIM translation stage pos (mm)	-190.132523	250.466033080201			
SIM translation stage offset (mm)	0	-0.01005468664627074			
Observation start time	118594518.588	118594517.81963			
Observation start date	2001-10-04T14:55:19	2001-10-04T14:55:17			
Observation end time	118615828.339	118615827.57047			
Observation end date	2001-10-04T20:50:28	2001-10-04T20:50:27			
Read mode	TIMED	TIMED			

## 2.3 Aspect



## **2.4 Star Slots**

## **2.5 FID Slots**



## A Summary

### A.1 Status

V&V Scientist	Beth Sundheim
V&V Date (YYYY-MM-DD)	2007.01.05
V&V Edition	1
V&V Disposition and Status	OK
V&V Charge Time	6.33009381

### A.2 Comments