

V&V Reference Report

L2 ASCDS Version : 8.4.5

Observation 61436 - L2 Version 3
Chandra X-Ray Center

L2 Processing Date : Sep 25 2012

Contents

1	Front	2
2	OBI	3
2.1	OBI	3
2.1.1	Images	3
2.1.2	Bias	3
2.1.3	Parameters	4
2.1.4	Events	4
2.2	Compared Parameters	5
2.3	Star Slots	6
2.4	FID Slots	6
A	Summary	7
A.1	Status	7
A.2	Comments	7

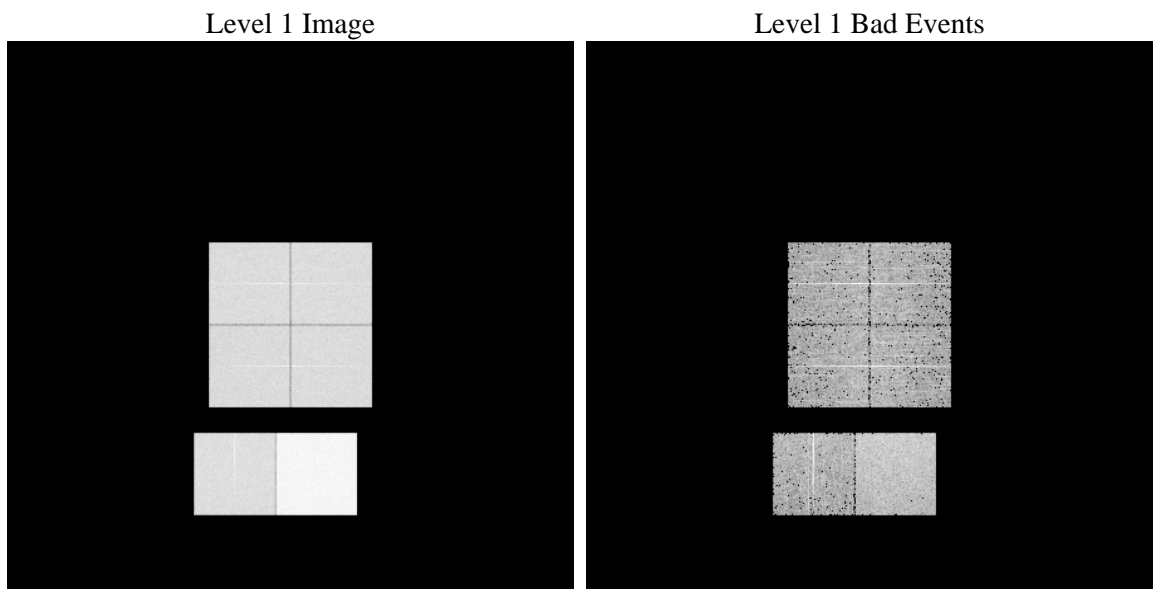
1 Front

seq_num	 	Sequence number
obs_id	61436	Observation id
title	ACIS-012367 diagnostics	Proposal title
observer	CHANDRA engineering request/realtime commanding	Principal investig
object	 	Source name
dtcycle	0	
cycle	P	events from which exps? Prim/Second/Both
ra_targ	0.0	Observer's specified target RA [deg]
dec_targ	0.0	Observer's specified target Dec [deg]
ra_nom	128.99061457769	Nominal RA [deg]
dec_nom	35.027583354354	Nominal Dec [deg]
roll_nom	72.839616866343	Nominal Roll [deg]
revision	3	Processing version of data
ontime	7811.7024092823	Sum of GTIs [s]
livetime	7712.7859297335	Livetime [s]
ontime0	3118.7687423974	Sum of GTIs [s]
ontime1	3162.2316334993	Sum of GTIs [s]
ontime2	2946.9935828894	Sum of GTIs [s]
ontime3	3002.0912727863	Sum of GTIs [s]
ontime6	3228.96351403	Sum of GTIs [s]
ontime7	7811.7024092823	Sum of GTIs [s]
l2events	1333024	Number of level 2 events

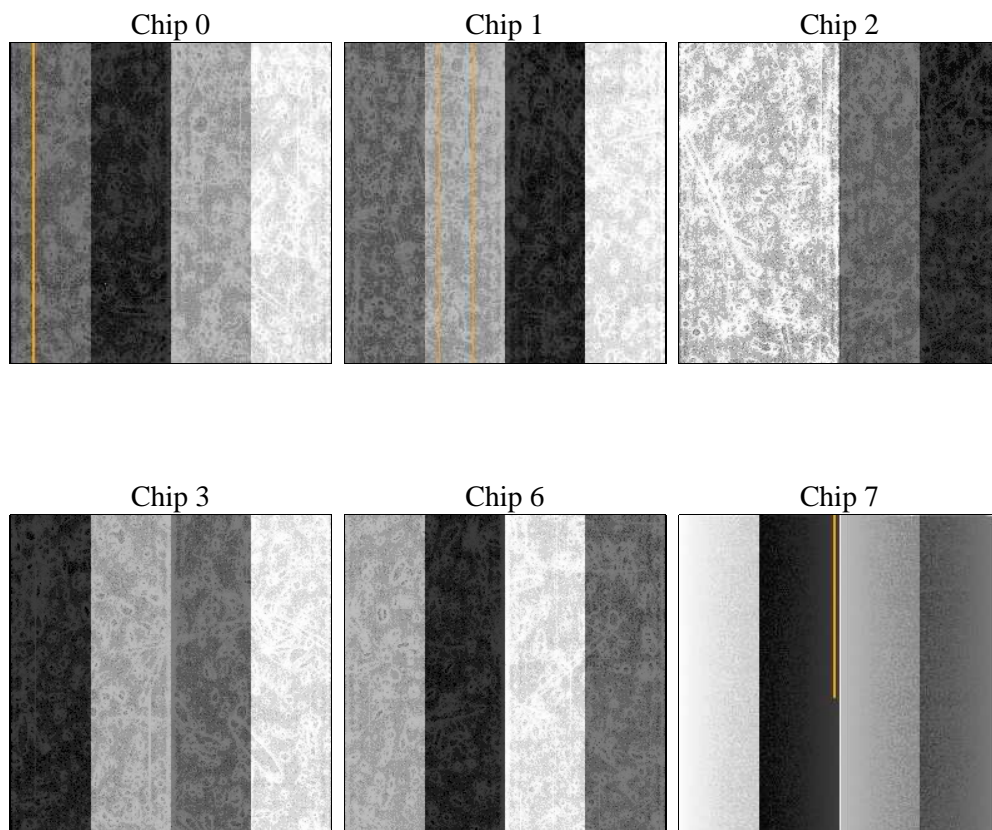
2 OBI

2.1 OBI

2.1.1 Images



2.1.2 Bias



2.1.3 Parameters

obi_num	0	Obi number	sched_exp_time	0.0	[s] Scheduled observation exposure time
ascdsver	8.4.5	Processing system revision	ontime	7811.7024092823	Sum of GTIs [s]
caldsver	4.5.1.1	 	ontime0	3118.7687423974	Sum of GTIs [s]
date	2012-09-26T00:24:54	Date and time of file creation	ontime1	3162.2316334993	Sum of GTIs [s]
revision	3	Processing version of data	ontime2	2946.9935828894	Sum of GTIs [s]
			ontime3	3002.0912727863	Sum of GTIs [s]
			ontime6	3228.96351403	Sum of GTIs [s]
			ontime7	7811.7024092823	Sum of GTIs [s]
			l1events	1543359	Number of level 1 events

2.1.4 Events

	ccd 0	ccd 1	ccd 2	ccd 3	ccd 6	ccd 7		ccd 0	ccd 1	ccd 2	ccd 3	ccd 6	ccd 7
level 1 events	205318	207170	195766	201166	221807	512132	grade 0 events	100730	102071	96828	99595	107672	119375
rejected events	22692	21998	22291	23264	24168	40248		49%	49%	49%	49%	48%	23%
rejected %	11%	10%	11%	11%	10%	7%	grade 1 events	500	543	482	526	506	305
								0%	0%	0%	0%	0%	0%
							grade 2 events	32333	32724	30455	31124	34210	104282
								15%	15%	15%	15%	15%	20%
							grade 3 events	11467	11610	10896	11242	12238	47830
								5%	5%	5%	5%	5%	9%
							grade 4 events	11737	11893	10700	11139	12212	47235
								5%	5%	5%	5%	5%	9%
							grade 5 events	1560	1554	1506	1594	1854	8562
								0%	0%	0%	0%	0%	1%
							grade 6 events	26650	26874	24907	24802	31634	153237
								12%	12%	12%	12%	14%	29%
							grade 7 events	20341	19901	19992	21144	21481	31306
								9%	9%	10%	10%	9%	6%

2.2 Compared Parameters

Parameter	Planned	Actual	Parameter	Planned	Actual
Instrument	ACIS	ACIS	Obspar format version number	7	7
Detector	ACIS-012367	ACIS-012367	Obspar file type	PREDICTED	ACTUAL
Grating	NONE	NONE	Obspar update status	NONE	UPDATED
Data mode	FAINT	FAINT	On-chip summing requested	N	N
Observation mode	SECONDARY	SECONDARY	Subarray requested	NONE	NONE
[deg] Pointing RA	0	128.9906145776917	Alternating exposures requested	N	N
[deg] Pointing Dec	0	35.02758335435428	[s] Primary exposure time	0.000000	3.2
[deg] Pointing Roll	0.0	72.83961686634318			
[mm] SIM focus pos	-0.782348	-0.6828225247311905			
[mm] SIM defocus	0	0.8505141146731063			
[mm] SIM translation stage pos	-233.592463	250.466033080201			
[mm] SIM translation stage offset	0	-0.01005468664627074			
[s] Observation start time (MET)	119740829.434	119740828.6651			
Observation start date	2001-10-17T21:20:29	2001-10-17T21:20:28			
[s] Observation end time (MET)	119762141.234	119762140.46595			
Observation end date	2001-10-18T03:15:41	2001-10-18T03:15:40			
Read mode	TIMED	TIMED			

2.3 Star Slots

2.4 FID Slots

A Summary

A.1 Status

V&V Scientist	Beth Sundheim
V&V Date (YYYY-MM-DD)	2012.09.27
V&V Edition	1
V&V Disposition and Status	OK
V&V Charge Time	7.8117024092823

A.2 Comments