

# V&V Reference Report

## L2 ASCDS Version : 7.6.10

Observation 61419 - L2 Version 001  
Chandra X-Ray Center

L2 Processing Date : Jan 13 2007

## Contents

<b>1</b>	<b>Front</b>	<b>2</b>
<b>2</b>	<b>OBI</b>	<b>3</b>
2.1	OBI . . . . .	3
2.1.1	Images . . . . .	3
2.1.2	Bias . . . . .	3
2.1.3	Parameters . . . . .	4
2.1.4	Events . . . . .	4
2.2	Compared Parameters . . . . .	5
2.3	Star Slots . . . . .	6
2.4	FID Slots . . . . .	6
<b>A</b>	<b>Summary</b>	<b>7</b>
A.1	Status . . . . .	7
A.2	Comments . . . . .	7

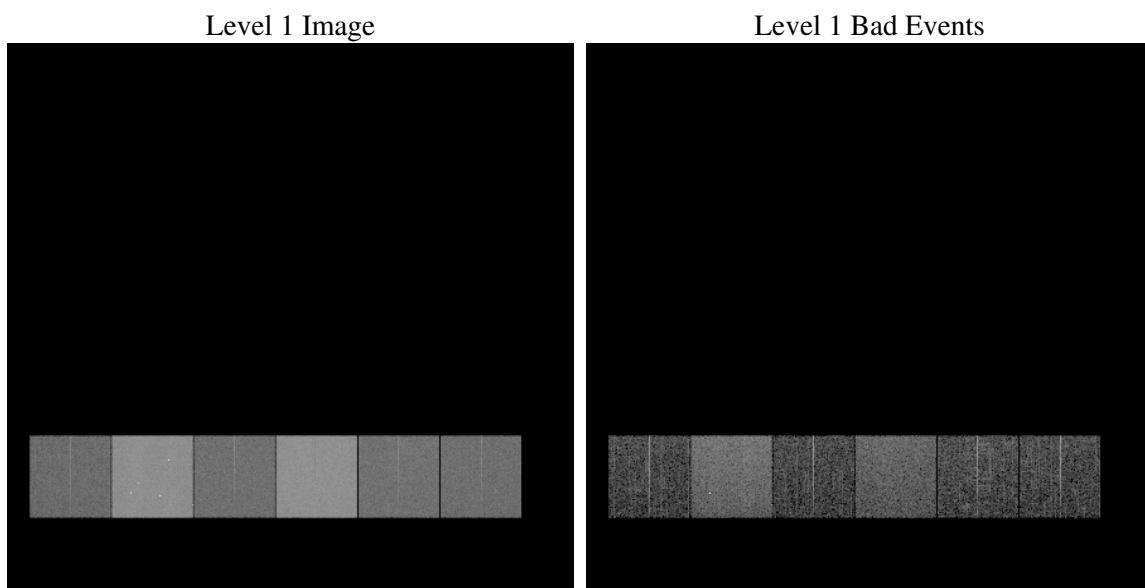
# 1 Front

seq_num	&#160
obs_id	61419
title	ACIS-456789 diagnostics
observer	CHANDRA engineering request/realtime commanding
object	&#160
dtcycle	0
cycle	P
ra_targ	0.0
dec_targ	0.0
ra_nom	140.98320855151
dec_nom	60.027388085317
roll_nom	74.250223166687
revision	2
ontime	6428.9182439744
livetime	6347.5114101394
ontime4	2419.8086126745
ontime5	6908.5802129358
ontime6	2588.3423433304
ontime7	6428.9182439744
ontime8	2647.0130133182
ontime9	2530.0036433935
l2events	1300431

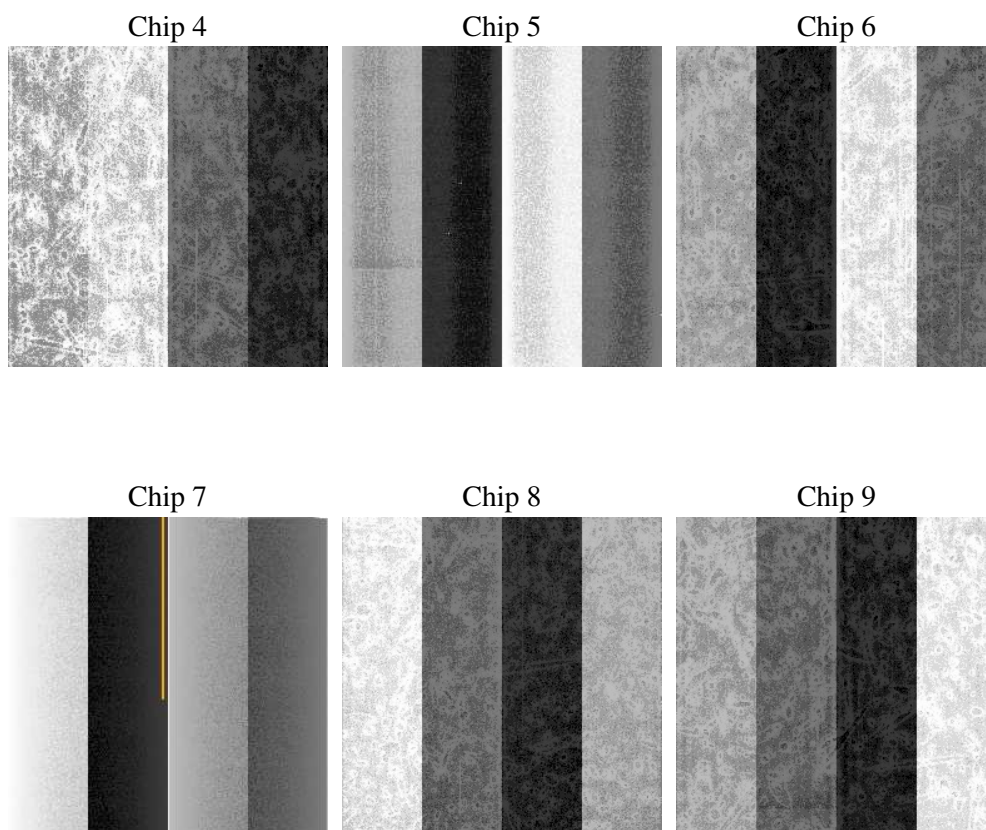
## 2 OBI

### 2.1 OBI

#### 2.1.1 Images



#### 2.1.2 Bias



### 2.1.3 Parameters

obi_num	0
ascdsver	7.6.10
caldsver	3.3.0
date	2007-01-13T17:55:55
revision	2

sched_exp_time	0.0
ontime	6428.9182439744
ontime4	2419.8086126745
ontime5	6908.5802129358
ontime6	2588.3423433304
ontime7	6428.9182439744
ontime8	2647.0130133182
ontime9	2530.0036433935
l1events	1543080

### 2.1.4 Events

	ccd 4	ccd 5	ccd 6	ccd 7	ccd 8	ccd 9
level 1 events	158830	418829	179873	427560	186912	171076
rejected events	22085	54083	21477	38299	24394	22139
rejected %	13%	12%	11%	8%	13%	12%

	ccd 4	ccd 5	ccd 6	ccd 7	ccd 8	ccd 9
grade 0 events	77563	87147	86920	99784	89538	82059
	48%	20%	48%	23%	47%	47%
grade 1 events	428	295	448	293	470	415
	0%	0%	0%	0%	0%	0%
grade 2 events	24478	134716	27601	86468	29157	26569
	15%	32%	15%	20%	15%	15%
grade 3 events	8578	22494	9717	39931	10178	9403
	5%	5%	5%	9%	5%	5%
grade 4 events	8216	21793	9713	39517	10421	9339
	5%	5%	5%	9%	5%	5%
grade 5 events	1352	9462	1501	7037	1709	1546
	0%	2%	0%	1%	0%	0%
grade 6 events	18985	101929	25606	127265	24471	22860
	11%	24%	14%	29%	13%	13%
grade 7 events	19230	40993	18367	27265	20968	18885
	12%	9%	10%	6%	11%	11%

## 2.2 Compared Parameters

Parameter	Planned	Actual	Parameter	Planned	Actual
Instrument	ACIS	ACIS	Obspar format version number	6	6
Detector	ACIS-456789	ACIS-456789	Obspar file type	PREDICTED	ACTUAL
Grating	NONE	NONE	Obspar update status	NONE	UPDATED
Data mode	FAINT	FAINT	On-chip summing requested	N	N
Observation mode	SECONDARY	SECONDARY	Subarray requested	NONE	NONE
Pointing RA	0	140.9832085515075	Alternating exposures requested	N	N
Pointing Dec	0	60.02738808531671	Primary exposure time	0.000000	3.2
Pointing Roll	0.0	74.25022316668652			
SIM focus pos (mm)	-0.684267	-0.6828225247311905			
SIM defocus (mm)	0	0.8505141146731063			
SIM translation stage pos (mm)	-190.132523	250.4635187648994			
SIM translation stage offset (mm)	0	-0.007540371344731511			
Observation start time	121109958.888	121109958.11948			
Observation start date	2001-11-02T17:39:19	2001-11-02T17:39:18			
Observation end time	121131268.639	121131267.87033			
Observation end date	2001-11-02T23:34:29	2001-11-02T23:34:27			
Read mode	TIMED	TIMED			

## **2.3 Star Slots**

## **2.4 FID Slots**

# A Summary

## A.1 Status

V&V Scientist	Jen Lauer
V&V Date (YYYY-MM-DD)	2007.01.16
V&V Edition	1
V&V Disposition and Status	OK
V&V Charge Time	6.42891824

## A.2 Comments

The ACIS focal plane temperature was above calibration limits for the entire observation.