

V&V Reference Report

L2 ASCDS Version : 7.6.10

Observation 61414 - L2 Version 001
Chandra X-Ray Center

L2 Processing Date : Jan 13 2007

Contents

1	Front	2
2	OBI	3
2.1	OBI	3
2.1.1	Images	3
2.1.2	Bias	3
2.1.3	Parameters	4
2.1.4	Events	4
2.2	Compared Parameters	5
2.3	Star Slots	6
2.4	FID Slots	6
A	Summary	7
A.1	Status	7
A.2	Comments	7

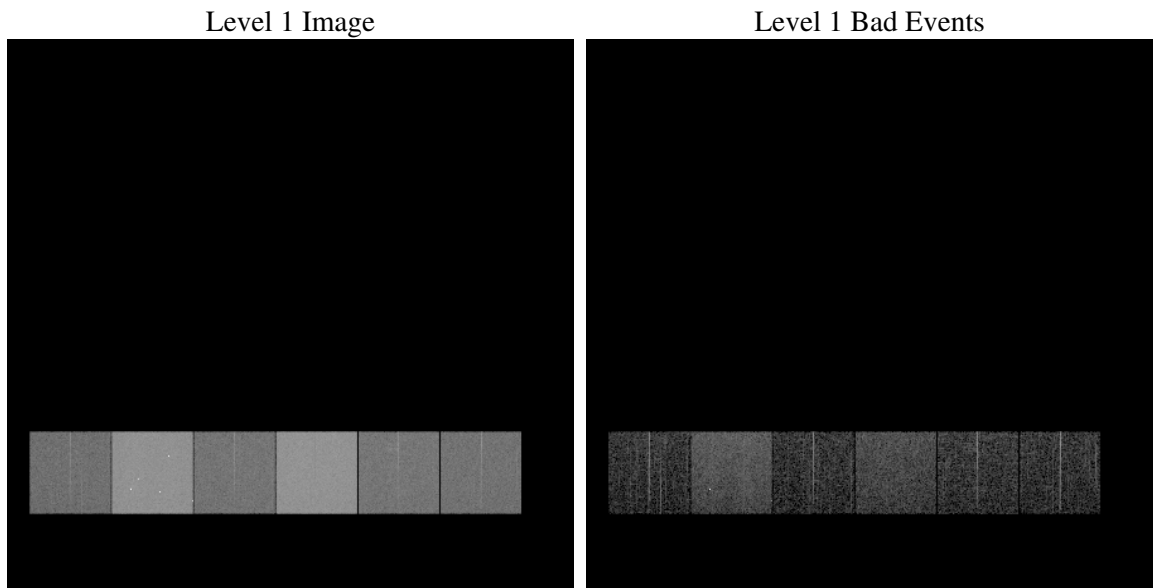
1 Front

seq_num	
obs_id	61414
title	ACIS-456789 diagnostics
observer	CHANDRA engineering request/realtime commanding
object	
dtcycle	0
cycle	P
ra_targ	0.0
dec_targ	0.0
ra_nom	2.222988816202
dec_nom	4.082942292478
roll_nom	290.57115410872
revision	2
ontime	5934.7307738662
livetime	5859.5816393416
ontime4	2298.4578080922
ontime5	6381.3168661147
ontime6	2489.6379482746
ontime7	5934.7307738662
ontime8	2567.5048086196
ontime9	2427.934849143
l2events	1212094

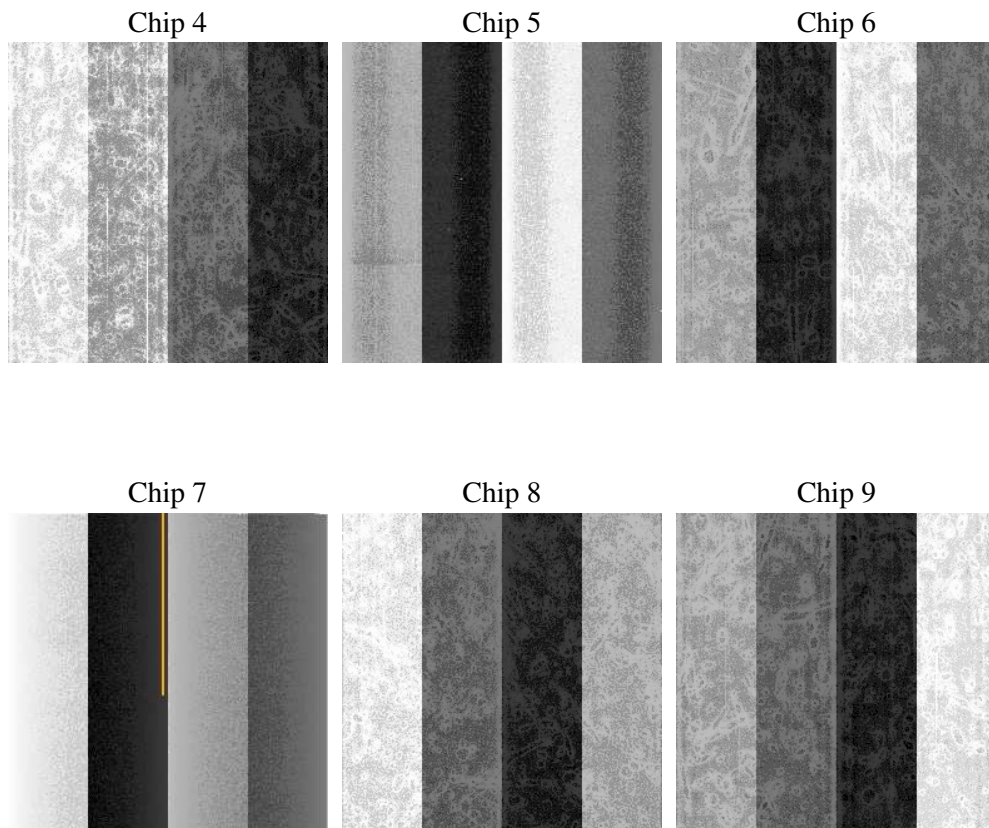
2 OBI

2.1 OBI

2.1.1 Images



2.1.2 Bias



2.1.3 Parameters

obi_num	3
ascdsver	7.6.10
caldbver	3.3.0
date	2007-01-13T18:28:17
revision	2

sched_exp_time	0.0
ontime	5934.7307738662
ontime4	2298.4578080922
ontime5	6381.3168661147
ontime6	2489.6379482746
ontime7	5934.7307738662
ontime8	2567.5048086196
ontime9	2427.934849143
l1events	1423194

2.1.4 Events

	ccd 4	ccd 5	ccd 6	ccd 7	ccd 8	ccd 9
level 1 events	148284	379200	169877	387557	177660	160616
rejected events	19378	45320	18830	30830	20880	19172
rejected %	13%	11%	11%	7%	11%	11%

	ccd 4	ccd 5	ccd 6	ccd 7	ccd 8	ccd 9
grade 0 events	72890	82894	82705	91293	86426	77794
	49%	21%	48%	23%	48%	48%
grade 1 events	393	244	404	256	416	385
	0%	0%	0%	0%	0%	0%
grade 2 events	22896	118806	26317	79748	27800	25121
	15%	31%	15%	20%	15%	15%
grade 3 events	7919	21381	9367	36196	9810	8695
	5%	5%	5%	9%	5%	5%
grade 4 events	7952	20912	9324	35791	9813	8600
	5%	5%	5%	9%	5%	5%
grade 5 events	1266	9404	1363	6269	1523	1465
	0%	2%	0%	1%	0%	0%
grade 6 events	17446	90055	23580	113867	23128	21403
	11%	23%	13%	29%	13%	13%
grade 7 events	17522	35504	16817	24137	18744	17153
	11%	9%	9%	6%	10%	10%

2.2 Compared Parameters

Parameter	Planned	Actual	Parameter	Planned	Actual
Instrument	ACIS	ACIS	Obspar format version number	6	6
Detector	ACIS-456789	ACIS-456789	Obspar file type	PREDICTED	ACTUAL
Grating	NONE	NONE	Obspar update status	NONE	UPDATED
Data mode	FAINT	FAINT	On-chip summing requested	N	N
Observation mode	SECONDARY	SECONDARY	Subarray requested	NONE	NONE
Pointing RA	0	2.222988816201956	Alternating exposures requested	N	N
Pointing Dec	0	4.082942292477965	Primary exposure time	0.000000	3.2
Pointing Roll	0.0	290.5711541087218			
SIM focus pos (mm)	-0.684267	-0.6828225247311905			
SIM defocus (mm)	0	0.8505141146731063			
SIM translation stage pos (mm)	-190.132523	250.4635187648994			
SIM translation stage offset (mm)	0	-0.007540371344731511			
Observation start time	121763318.514	121763317.74551			
Observation start date	2001-11-10T07:08:39	2001-11-10T07:08:37			
Observation end time	121775089.614	121775088.84598			
Observation end date	2001-11-10T10:24:50	2001-11-10T10:24:48			
Read mode	TIMED	TIMED			

2.3 Star Slots

2.4 FID Slots

A Summary

A.1 Status

V&V Scientist	Jen Lauer
V&V Date (YYYY-MM-DD)	2007.01.16
V&V Edition	1
V&V Disposition and Status	OK
V&V Charge Time	5.93473077

A.2 Comments