

V&V Reference Report

L2 ASCDS Version : 8.4.5

Observation 61392 - L2 Version 3
Chandra X-Ray Center

L2 Processing Date : Sep 28 2012

Contents

1	Front	2
2	OBI	3
2.1	OBI	3
2.1.1	Images	3
2.1.2	Bias	3
2.1.3	Parameters	4
2.1.4	Events	4
2.2	Compared Parameters	5
2.3	Star Slots	6
2.4	FID Slots	6
A	Summary	7
A.1	Status	7
A.2	Comments	7

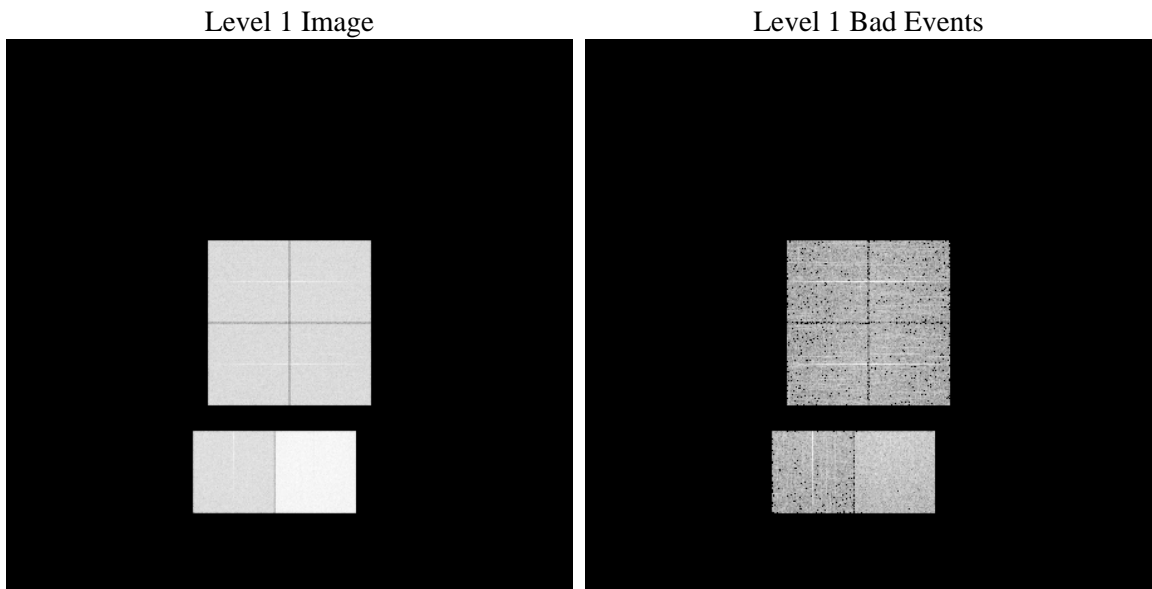
1 Front

seq_num	 	Sequence number
obs_id	61392	Observation id
title	ACIS-012367 diagnostics	Proposal title
observer	CHANDRA engineering request/realtime commanding	Principal investig
object	 	Source name
dtcycle	0	
cycle	P	events from which exps? Prim/Second/Both
ra_targ	0.0	Observer's specified target RA [deg]
dec_targ	0.0	Observer's specified target Dec [deg]
ra_nom	75.023532190453	Nominal RA [deg]
dec_nom	-5.9834726053931	Nominal Dec [deg]
roll_nom	2.4254411926824	Nominal Roll [deg]
revision	3	Processing version of data
ontime	8128.7195164263	Sum of GTIs [s]
livetime	8025.7887753821	Livetime [s]
ontime0	3169.7329160869	Sum of GTIs [s]
ontime1	3208.6259142905	Sum of GTIs [s]
ontime2	3085.6300229579	Sum of GTIs [s]
ontime3	3092.2764025927	Sum of GTIs [s]
ontime6	3364.1940601915	Sum of GTIs [s]
ontime7	8128.7195164263	Sum of GTIs [s]
l2events	1329364	Number of level 2 events

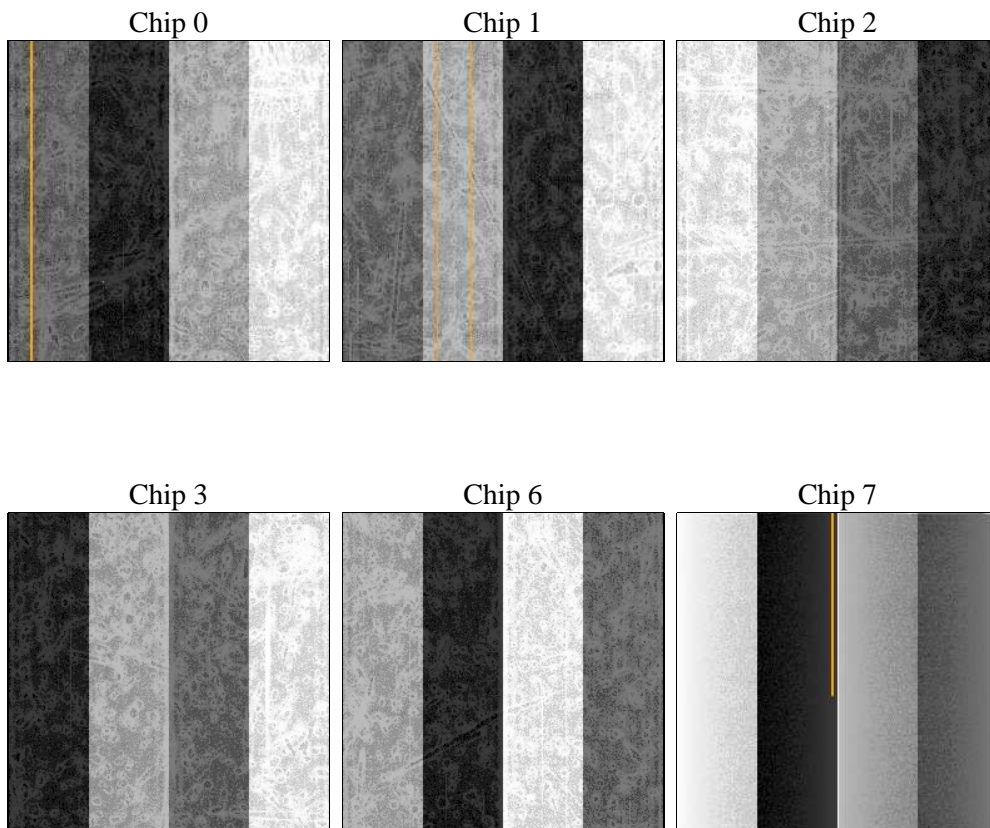
2 OBI

2.1 OBI

2.1.1 Images



2.1.2 Bias



2.1.3 Parameters

obi_num	1	Obi number	sched_exp_time	0.0	[s] Scheduled observation exposure time
ascdsver	8.4.5	Processing system revision	ontime	8128.7195164263	Sum of GTIs [s]
caldsver	4.5.2	 	ontime0	3169.7329160869	Sum of GTIs [s]
date	2012-09-29T00:17:04	Date and time of file creation	ontime1	3208.6259142905	Sum of GTIs [s]
revision	3	Processing version of data	ontime2	3085.6300229579	Sum of GTIs [s]
			ontime3	3092.2764025927	Sum of GTIs [s]
			ontime6	3364.1940601915	Sum of GTIs [s]
			ontime7	8128.7195164263	Sum of GTIs [s]
			l1events	1542685	Number of level 1 events

2.1.4 Events

	ccd 0	ccd 1	ccd 2	ccd 3	ccd 6	ccd 7		ccd 0	ccd 1	ccd 2	ccd 3	ccd 6	ccd 7
level 1 events	200243	203189	198826	199672	223595	517160	grade 0 events	98269	99146	97770	98858	108170	121247
rejected events	21789	23159	23191	23533	24553	41601		49%	48%	49%	49%	48%	23%
rejected %	10%	11%	11%	11%	10%	8%	grade 1 events	520	499	502	503	551	302
								0%	0%	0%	0%	0%	0%
							grade 2 events	31384	31870	30844	30523	34416	104897
								15%	15%	15%	15%	15%	20%
							grade 3 events	11266	11368	10955	11313	12317	48827
								5%	5%	5%	5%	5%	9%
							grade 4 events	11262	11545	11096	11042	12473	48432
								5%	5%	5%	5%	5%	9%
							grade 5 events	1578	1732	1560	1678	1874	8677
								0%	0%	0%	0%	0%	1%
							grade 6 events	26273	26101	25151	24600	31666	152341
								13%	12%	12%	12%	14%	29%
							grade 7 events	19691	20928	20948	21155	22128	32437
								9%	10%	10%	10%	9%	6%

2.2 Compared Parameters

Parameter	Planned	Actual	Parameter	Planned	Actual
Instrument	ACIS	ACIS	Obspar format version number	7	7
Detector	ACIS-012367	ACIS-012367	Obspar file type	PREDICTED	ACTUAL
Grating	NONE	NONE	Obspar update status	NONE	UPDATED
Data mode	FAINT	FAINT	On-chip summing requested	N	N
Observation mode	SECONDARY	SECONDARY	Subarray requested	NONE	NONE
[deg] Pointing RA	0	75.0235321904527	Alternating exposures requested	N	N
[deg] Pointing Dec	0	-5.983472605393087	[s] Primary exposure time	0.000000	3.2
[deg] Pointing Roll	0.0	2.425441192682393			
[mm] SIM focus pos	-0.782348	-0.6828225247311905			
[mm] SIM defocus	0	0.8505141146731063			
[mm] SIM translation stage pos	-233.592463	250.466033080201			
[mm] SIM translation stage offset	0	-0.01005468664627074			
[s] Observation start time (MET)	124079500.857	124079500.08814			
Observation start date	2001-12-07T02:31:41	2001-12-07T02:31:40			
[s] Observation end time (MET)	124102007.808	124102007.03904			
Observation end date	2001-12-07T08:46:48	2001-12-07T08:46:47			
Read mode	TIMED	TIMED			

2.3 Star Slots

2.4 FID Slots

A Summary

A.1 Status

V&V Scientist	Jen Lauer
V&V Date (YYYY-MM-DD)	2012.09.30
V&V Edition	1
V&V Disposition and Status	OK
V&V Charge Time	8.1287195164263

A.2 Comments