

V&V Reference Report

L2 ASCDS Version : 7.6.10

Observation 61381 - L2 Version 001
Chandra X-Ray Center

L2 Processing Date : Jan 18 2007

Contents

1	Front	2
2	OBI	3
2.1	OBI	3
2.1.1	Images	3
2.1.2	Bias	3
2.1.3	Parameters	4
2.1.4	Events	4
2.2	Compared Parameters	5
2.3	Star Slots	6
2.4	FID Slots	6
A	Summary	7
A.1	Status	7
A.2	Comments	7

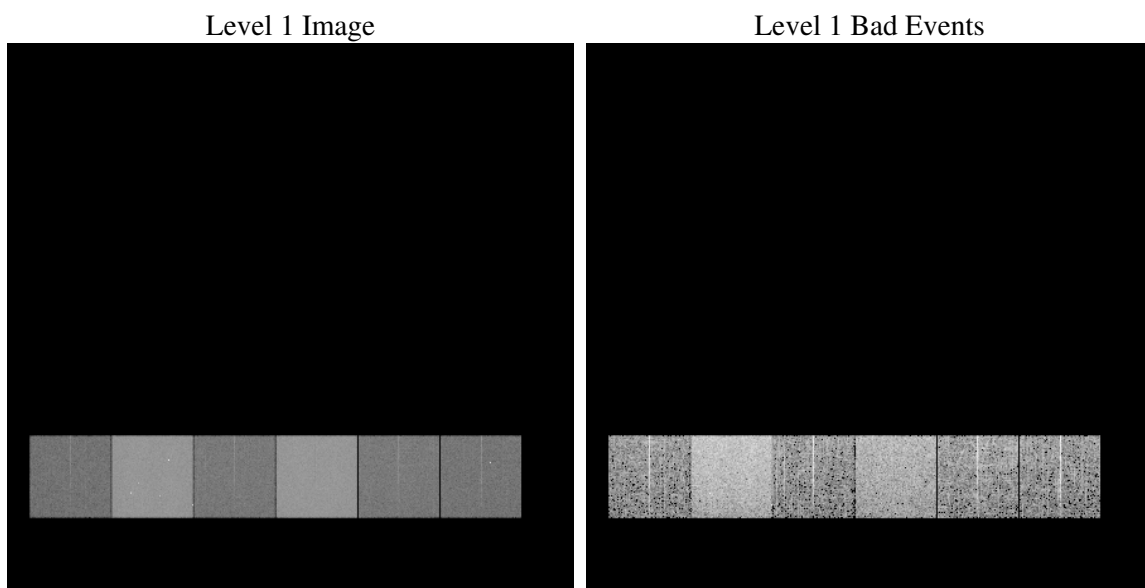
1 Front

seq_num	
obs_id	61381
title	ACIS-456789 diagnostics
observer	CHANDRA engineering request/realtime commanding
object	
dtcycle	0
cycle	P
ra_targ	0.0
dec_targ	0.0
ra_nom	351.3810290459
dec_nom	-12.171373316088
roll_nom	292.36131624095
revision	2
ontime	6178.8079950362
livetime	6100.5682077716
ontime4	2331.8752902299
ontime5	6616.3783307821
ontime6	2600.8401209265
ontime7	6178.8079950362
ontime8	2630.0912819207
ontime9	2448.3881911337
l2events	1212210

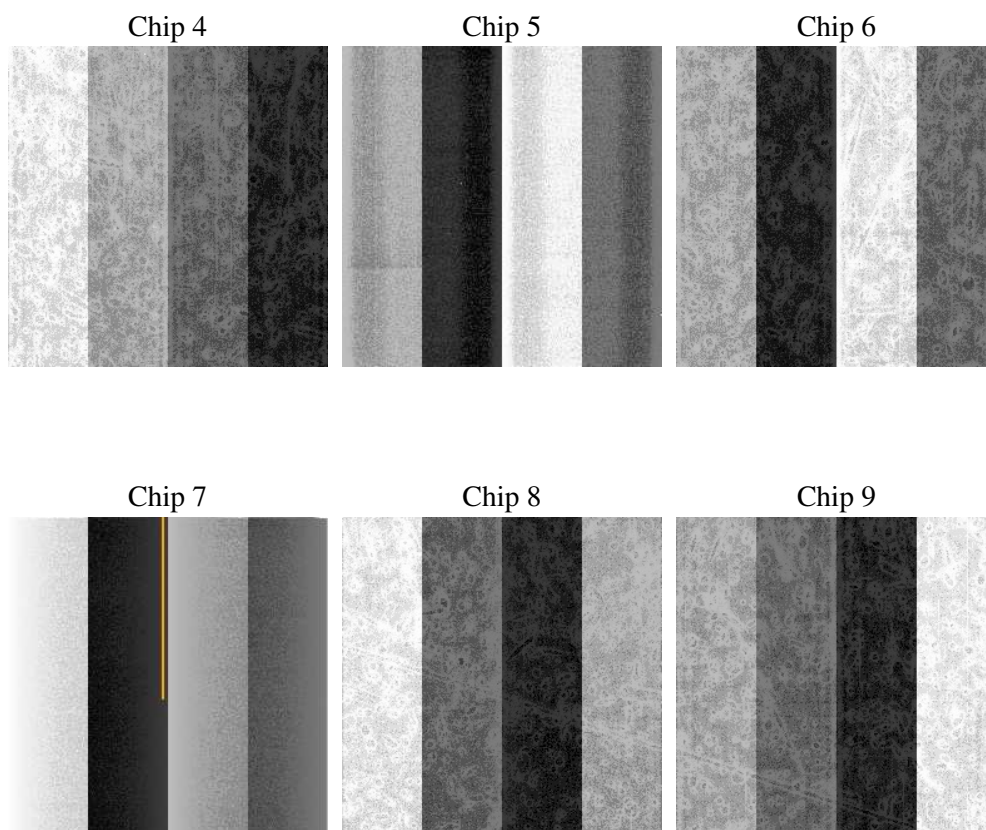
2 OBI

2.1 OBI

2.1.1 Images



2.1.2 Bias



2.1.3 Parameters

obi_num	0
ascdsver	7.6.10
caldbver	3.3.0
date	2007-01-18T09:55:57
revision	2

sched_exp_time	0.0
ontime	6178.8079950362
ontime4	2331.8752902299
ontime5	6616.3783307821
ontime6	2600.8401209265
ontime7	6178.8079950362
ontime8	2630.0912819207
ontime9	2448.3881911337
l1events	1423835

2.1.4 Events

	ccd 4	ccd 5	ccd 6	ccd 7	ccd 8	ccd 9
level 1 events	144811	383081	172556	390075	175957	157355
rejected events	18892	45515	19655	32378	21839	19216
rejected %	13%	11%	11%	8%	12%	12%

	ccd 4	ccd 5	ccd 6	ccd 7	ccd 8	ccd 9
grade 0 events	71455	85022	83605	90864	85213	75483
	49%	22%	48%	23%	48%	47%
grade 1 events	389	351	389	210	397	393
	0%	0%	0%	0%	0%	0%
grade 2 events	22127	118643	26492	79575	27101	25114
	15%	30%	15%	20%	15%	15%
grade 3 events	7810	21880	9386	36447	9573	8347
	5%	5%	5%	9%	5%	5%
grade 4 events	7754	21716	9431	36186	9775	8541
	5%	5%	5%	9%	5%	5%
grade 5 events	1189	8558	1514	6638	1633	1387
	0%	2%	0%	1%	0%	0%
grade 6 events	16947	90500	24197	114807	22663	20822
	11%	23%	14%	29%	12%	13%
grade 7 events	17140	36411	17542	25348	19602	17268
	11%	9%	10%	6%	11%	10%

2.2 Compared Parameters

Parameter	Planned	Actual	Parameter	Planned	Actual
Instrument	ACIS	ACIS	Obspar format version number	6	6
Detector	ACIS-456789	ACIS-456789	Obspar file type	PREDICTED	ACTUAL
Grating	NONE	NONE	Obspar update status	NONE	UPDATED
Data mode	FAINT	FAINT	On-chip summing requested	N	N
Observation mode	SECONDARY	SECONDARY	Subarray requested	NONE	NONE
Pointing RA	0	351.3810290458991	Alternating exposures requested	N	N
Pointing Dec	0	-12.17137331608787	Primary exposure time	0.000000	3.2
Pointing Roll	0.0	292.3613162409543			
SIM focus pos (mm)	-0.684267	-0.7809083437167272			
SIM defocus (mm)	0	0.7524282956875696			
SIM translation stage pos (mm)	-190.132523	250.466033080201			
SIM translation stage offset (mm)	0	-0.01005468664627074			
Observation start time	124961982.842	124961982.07347			
Observation start date	2001-12-17T07:39:43	2001-12-17T07:39:42			
Observation end time	124973969.192	124973968.42395			
Observation end date	2001-12-17T10:59:29	2001-12-17T10:59:28			
Read mode	TIMED	TIMED			

2.3 Star Slots

2.4 FID Slots

A Summary

A.1 Status

V&V Scientist	Jen Lauer
V&V Date (YYYY-MM-DD)	2007.01.18
V&V Edition	1
V&V Disposition and Status	OK
V&V Charge Time	6.17880799

A.2 Comments