

# V&V Reference Report

## L2 ASCDS Version : 7.6.10

Observation 61371 - L2 Version 001  
Chandra X-Ray Center

L2 Processing Date : Jan 17 2007

## Contents

<b>1</b>	<b>Front</b>	<b>2</b>
<b>2</b>	<b>OBI</b>	<b>3</b>
2.1	OBI . . . . .	3
2.1.1	Images . . . . .	3
2.1.2	Bias . . . . .	3
2.1.3	Parameters . . . . .	4
2.1.4	Events . . . . .	4
2.2	Compared Parameters . . . . .	5
2.3	Star Slots . . . . .	6
2.4	FID Slots . . . . .	6
<b>A</b>	<b>Summary</b>	<b>7</b>
A.1	Status . . . . .	7
A.2	Comments . . . . .	7

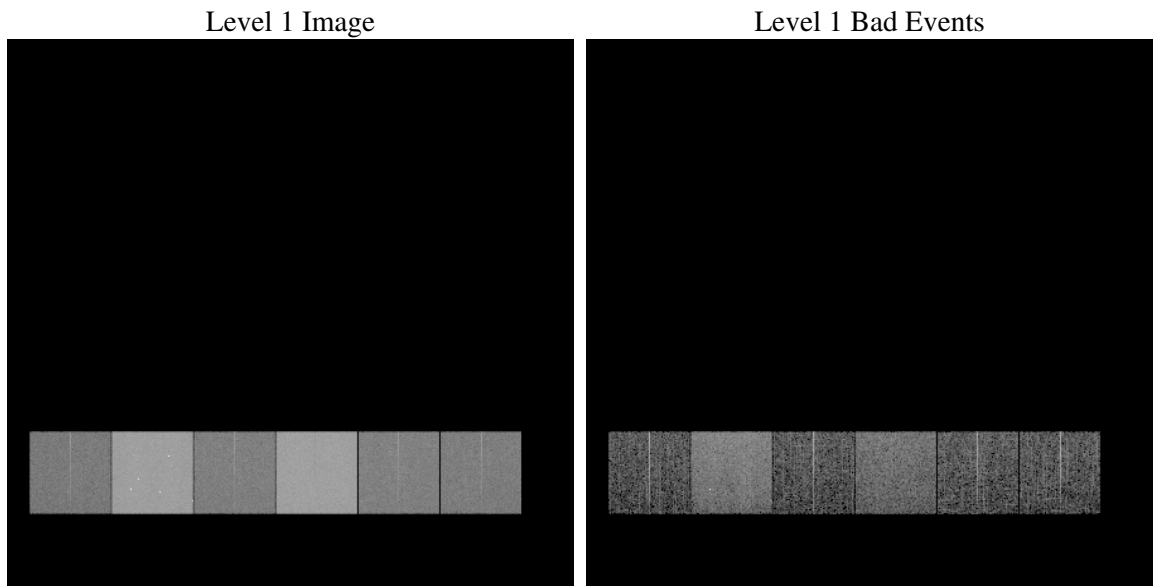
# 1 Front

seq_num	&#160
obs_id	61371
title	ACIS-456789 diagnostics
observer	CHANDRA engineering request/realtime commanding
object	&#160
dtcycle	0
cycle	P
ra_targ	0.0
dec_targ	0.0
ra_nom	340.03700260212
dec_nom	44.988358944297
roll_nom	303.2100438622
revision	2
ontime	6826.287236467
livetime	6739.8486771822
ontime4	2477.0668221563
ontime5	7318.9132262021
ontime6	2690.7862170339
ontime7	6826.287236467
ontime8	2768.8012820035
ontime9	2609.7852220535
l2events	1303874

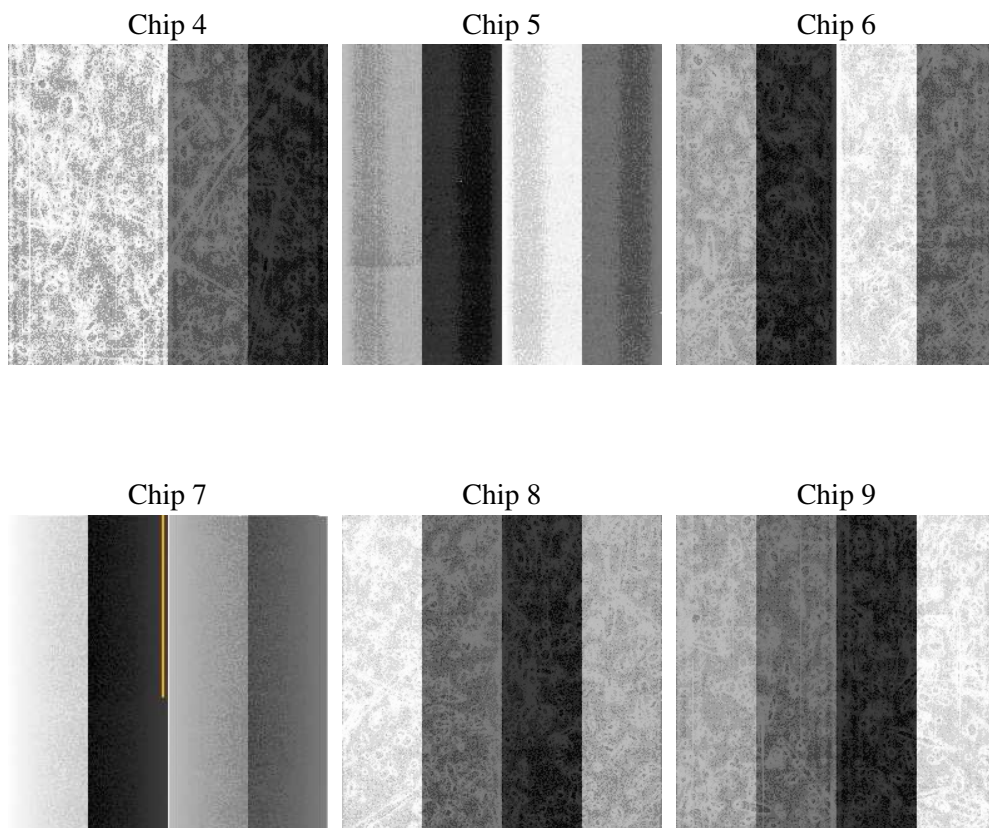
## 2 OBI

### 2.1 OBI

#### 2.1.1 Images



#### 2.1.2 Bias



### 2.1.3 Parameters

obi_num	0
ascdsver	7.6.10
caldsver	3.3.0
date	2007-01-17T05:23:23
revision	2

sched_exp_time	0.0
ontime	6826.287236467
ontime4	2477.0668221563
ontime5	7318.9132262021
ontime6	2690.7862170339
ontime7	6826.287236467
ontime8	2768.8012820035
ontime9	2609.7852220535
l1events	1543096

### 2.1.4 Events

	ccd 4	ccd 5	ccd 6	ccd 7	ccd 8	ccd 9
level 1 events	154310	423705	178479	432313	185320	168969
rejected events	21832	53555	22194	37349	23887	22737
rejected %	14%	12%	12%	8%	12%	13%

	ccd 4	ccd 5	ccd 6	ccd 7	ccd 8	ccd 9
grade 0 events	75014	88445	85074	99842	88541	79956
	48%	20%	47%	23%	47%	47%
grade 1 events	402	275	462	293	459	452
	0%	0%	0%	0%	0%	0%
grade 2 events	23396	133740	27178	87352	28520	26018
	15%	31%	15%	20%	15%	15%
grade 3 events	8117	23077	9753	40124	10224	9153
	5%	5%	5%	9%	5%	5%
grade 4 events	8058	22832	9744	39557	10184	8965
	5%	5%	5%	9%	5%	5%
grade 5 events	1334	10048	1581	7518	1785	1561
	0%	2%	0%	1%	0%	0%
grade 6 events	18065	102221	24715	128278	24130	22322
	11%	24%	13%	29%	13%	13%
grade 7 events	19924	43067	19972	29349	21477	20542
	12%	10%	11%	6%	11%	12%

## 2.2 Compared Parameters

Parameter	Planned	Actual	Parameter	Planned	Actual
Instrument	ACIS	ACIS	Obspar format version number	6	6
Detector	ACIS-456789	ACIS-456789	Obspar file type	PREDICTED	ACTUAL
Grating	NONE	NONE	Obspar update status	NONE	UPDATED
Data mode	FAINT	FAINT	On-chip summing requested	N	N
Observation mode	SECONDARY	SECONDARY	Subarray requested	NONE	NONE
Pointing RA	0	340.0370026021207	Alternating exposures requested	N	N
Pointing Dec	0	44.98835894429744	Primary exposure time	0.000000	3.2
Pointing Roll	0.0	303.2100438621975			
SIM focus pos (mm)	-0.684267	-0.6828225247311905			
SIM defocus (mm)	0	0.8505141146731063			
SIM translation stage pos (mm)	-190.132523	250.466033080201			
SIM translation stage offset (mm)	0	-0.01005468664627074			
Observation start time	125680323.371	125680322.60226			
Observation start date	2001-12-25T15:12:03	2001-12-25T15:12:02			
Observation end time	125701633.122	125701632.35311			
Observation end date	2001-12-25T21:07:13	2001-12-25T21:07:12			
Read mode	TIMED	TIMED			

## **2.3 Star Slots**

## **2.4 FID Slots**

## A Summary

### A.1 Status

V&V Scientist	Jen Lauer
V&V Date (YYYY-MM-DD)	2007.01.17
V&V Edition	1
V&V Disposition and Status	OK
V&V Charge Time	6.82628723

### A.2 Comments