

V&V Reference Report

L2 ASCDS Version : 7.6.10

Observation 61365 - L2 Version 001
Chandra X-Ray Center

L2 Processing Date : Jan 17 2007

Contents

1	Front	2
2	OBI	3
2.1	OBI	3
2.1.1	Images	3
2.1.2	Bias	3
2.1.3	Parameters	4
2.1.4	Events	4
2.2	Compared Parameters	5
2.3	Star Slots	6
2.4	FID Slots	6
A	Summary	7
A.1	Status	7
A.2	Comments	7

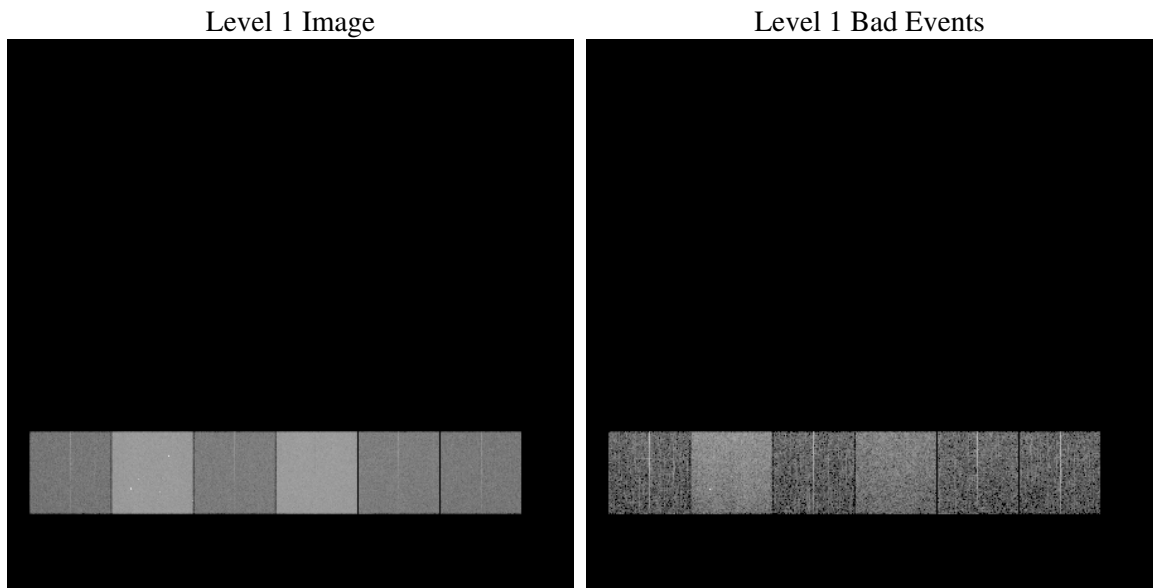
1 Front

seq_num	
obs_id	61365
title	ACIS-456789 diagnostics
observer	CHANDRA engineering request/realtime commanding
object	
dtcycle	0
cycle	P
ra_targ	0.0
dec_targ	0.0
ra_nom	130.01872014819
dec_nom	-43.974772010461
roll_nom	29.251416790148
revision	2
ontime	6280.68362692
livetime	6201.1538290623
ontime4	2291.0229629129
ontime5	6718.2130234092
ontime6	2570.6912592947
ontime7	6280.68362692
ontime8	2609.6656197906
ontime9	2398.7930894643
l2events	1206564

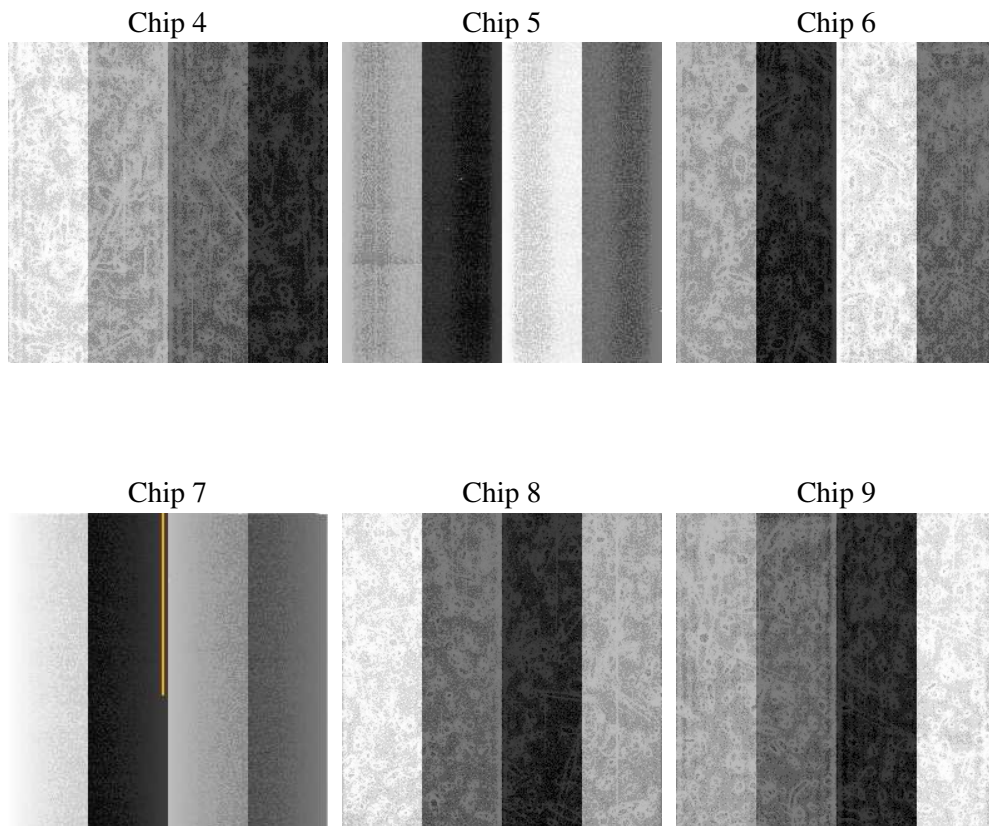
2 OBI

2.1 OBI

2.1.1 Images



2.1.2 Bias



2.1.3 Parameters

obi_num	1
ascdsver	7.6.10
caldbver	3.3.0
date	2007-01-17T05:43:31
revision	2

sched_exp_time	0.0
ontime	6280.68362692
ontime4	2291.0229629129
ontime5	6718.2130234092
ontime6	2570.6912592947
ontime7	6280.68362692
ontime8	2609.6656197906
ontime9	2398.7930894643
l1events	1422355

2.1.4 Events

	ccd 4	ccd 5	ccd 6	ccd 7	ccd 8	ccd 9
level 1 events	143404	387194	169279	396592	172956	152930
rejected events	20411	47762	19898	33394	21364	19817
rejected %	14%	12%	11%	8%	12%	12%

	ccd 4	ccd 5	ccd 6	ccd 7	ccd 8	ccd 9
grade 0 events	69821	82836	81710	93176	83336	73121
	48%	21%	48%	23%	48%	47%
grade 1 events	378	276	387	261	418	392
	0%	0%	0%	0%	0%	0%
grade 2 events	21695	120498	25929	80426	26857	23639
	15%	31%	15%	20%	15%	15%
grade 3 events	7581	21811	9332	37114	9713	8206
	5%	5%	5%	9%	5%	5%
grade 4 events	7471	21816	9164	37058	9460	8299
	5%	5%	5%	9%	5%	5%
grade 5 events	1237	8964	1423	6892	1613	1451
	0%	2%	0%	1%	0%	0%
grade 6 events	16606	92628	23421	115593	22427	20028
	11%	23%	13%	29%	12%	13%
grade 7 events	18615	38365	17913	26072	19132	17794
	12%	9%	10%	6%	11%	11%

2.2 Compared Parameters

Parameter	Planned	Actual	Parameter	Planned	Actual
Instrument	ACIS	ACIS	Obspar format version number	6	6
Detector	ACIS-456789	ACIS-456789	Obspar file type	PREDICTED	ACTUAL
Grating	NONE	NONE	Obspar update status	NONE	UPDATED
Data mode	FAINT	FAINT	On-chip summing requested	N	N
Observation mode	SECONDARY	SECONDARY	Subarray requested	NONE	NONE
Pointing RA	0	130.0187201481892	Alternating exposures requested	N	N
Pointing Dec	0	-43.97477201046059	Primary exposure time	0.000000	3.2
Pointing Roll	0.0	29.25141679014835			
SIM focus pos (mm)	-0.684267	-0.6828225247311905			
SIM defocus (mm)	0	0.8505141146731063			
SIM translation stage pos (mm)	-190.132523	250.466033080201			
SIM translation stage offset (mm)	0	-0.01005468664627074			
Observation start time	126100257.688	126100256.91911			
Observation start date	2001-12-30T11:50:58	2001-12-30T11:50:56			
Observation end time	126138488.139	126138487.37065			
Observation end date	2001-12-30T22:28:08	2001-12-30T22:28:07			
Read mode	TIMED	TIMED			

2.3 Star Slots

2.4 FID Slots

A Summary

A.1 Status

V&V Scientist	Jen Lauer
V&V Date (YYYY-MM-DD)	2007.01.17
V&V Edition	1
V&V Disposition and Status	OK
V&V Charge Time	6.28068362

A.2 Comments