

V&V Reference Report

L2 ASCDS Version : 8.4.5

Observation 62182 - L2 Version 4
Chandra X-Ray Center

L2 Processing Date : Aug 22 2012

Contents

1	Front	2
2	OBI	3
2.1	OBI	3
2.1.1	Images	3
2.1.2	Bias	3
2.1.3	Parameters	4
2.1.4	Events	4
2.2	Compared Parameters	5
2.3	Star Slots	6
2.4	FID Slots	6
A	Summary	7
A.1	Status	7
A.2	Comments	7

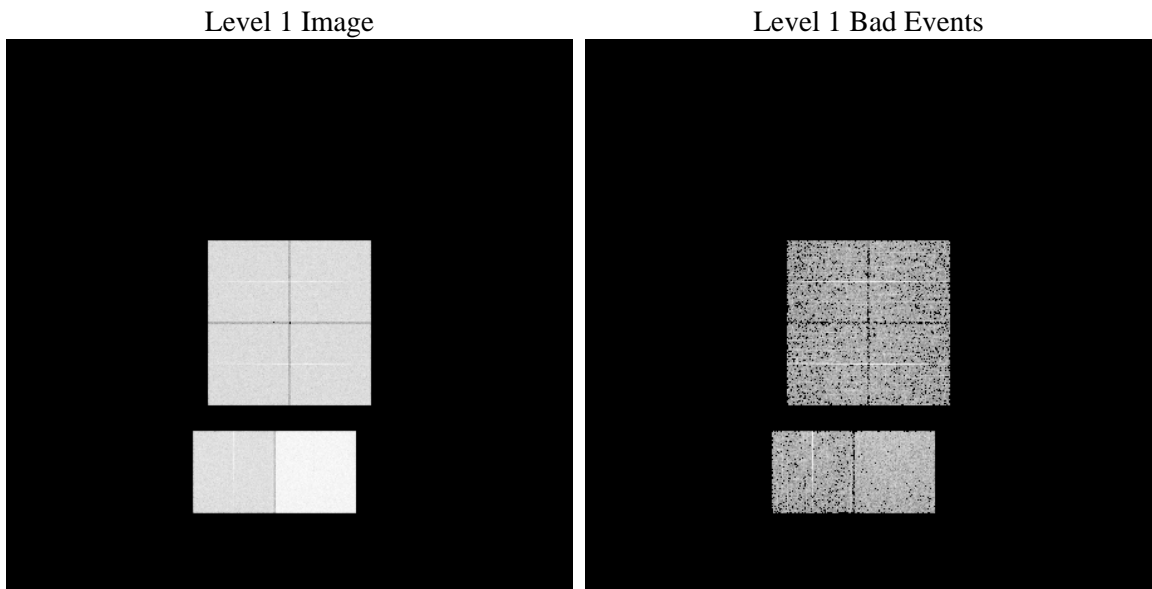
1 Front

seq_num	 	Sequence number
obs_id	62182	Observation id
title	ACIS-012367 diagnostics	Proposal title
observer	CHANDRA engineering request/realtime commanding	Principal investig
object	 	Source name
dtcycle	0	
cycle	P	events from which exps? Prim/Second/Both
ra_targ	0.0	Observer's specified target RA [deg]
dec_targ	0.0	Observer's specified target Dec [deg]
ra_nom	52.827045062728	Nominal RA [deg]
dec_nom	43.883452723425	Nominal Dec [deg]
roll_nom	280.51986032475	Nominal Roll [deg]
revision	4	Processing version of data
ontime	3516.7186350375	Sum of GTIs [s]
livetime	3472.187826167	Livetime [s]
ontime0	1413.092146419	Sum of GTIs [s]
ontime1	1439.1676703691	Sum of GTIs [s]
ontime2	1348.2714160755	Sum of GTIs [s]
ontime3	1396.8272555247	Sum of GTIs [s]
ontime6	1545.9747068807	Sum of GTIs [s]
ontime7	3516.7186350375	Sum of GTIs [s]
l2events	927565	Number of level 2 events

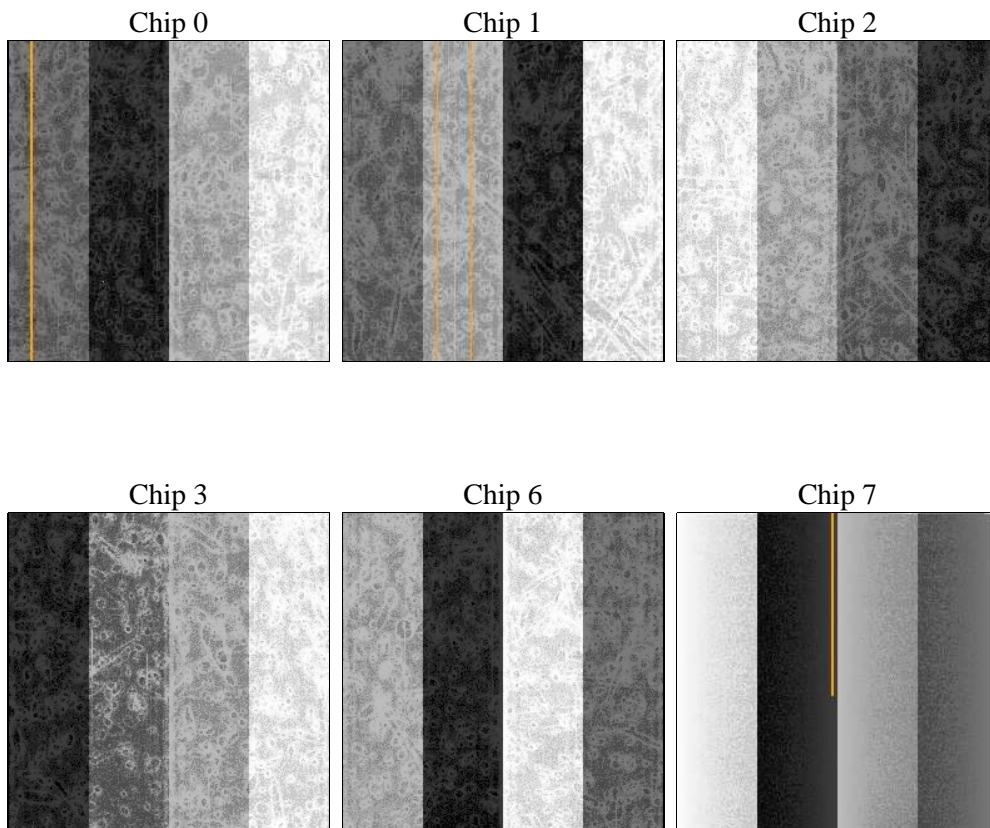
2 OBI

2.1 OBI

2.1.1 Images



2.1.2 Bias



2.1.3 Parameters

obi_num	0	Obi number	sched_exp_time	0.0	[s] Scheduled observation exposure time
ascdsver	8.4.5	Processing system revision	ontime	3516.7186350375	Sum of GTIs [s]
caldsver	4.5.1.1	 	ontime0	1413.092146419	Sum of GTIs [s]
date	2012-08-22T13:44:54	Date and time of file creation	ontime1	1439.1676703691	Sum of GTIs [s]
revision	4	Processing version of data	ontime2	1348.2714160755	Sum of GTIs [s]
			ontime3	1396.8272555247	Sum of GTIs [s]
			ontime6	1545.9747068807	Sum of GTIs [s]
			ontime7	3516.7186350375	Sum of GTIs [s]
			l1events	1062501	Number of level 1 events

2.1.4 Events

	ccd 0	ccd 1	ccd 2	ccd 3	ccd 6	ccd 7		ccd 0	ccd 1	ccd 2	ccd 3	ccd 6	ccd 7
level 1 events	138355	142351	136272	139979	159312	346232	grade 0 events	68618	70682	67430	69753	78505	83877
rejected events	14142	15083	15458	15149	15960	21146		49%	49%	49%	49%	49%	24%
rejected %	10%	10%	11%	10%	10%	6%	grade 1 events	461	442	416	453	478	238
								0%	0%	0%	0%	0%	0%
							grade 2 events	21646	22118	21001	21831	24647	71983
								15%	15%	15%	15%	15%	20%
							grade 3 events	8072	8038	7510	7887	8832	33450
								5%	5%	5%	5%	5%	9%
							grade 4 events	7867	8120	7670	8065	8896	33312
								5%	5%	5%	5%	5%	9%
							grade 5 events	1126	1070	984	1084	1193	4702
								0%	0%	0%	0%	0%	1%
							grade 6 events	18010	18572	17203	17294	22472	102762
								13%	13%	12%	12%	14%	29%
							grade 7 events	12555	13309	14058	13612	14289	15908
								9%	9%	10%	9%	8%	4%

2.2 Compared Parameters

Parameter	Planned	Actual	Parameter	Planned	Actual
Instrument	ACIS	ACIS	Obspar format version number	7	7
Detector	ACIS-012367	ACIS-012367	Obspar file type	PREDICTED	ACTUAL
Grating	NONE	NONE	Obspar update status	NONE	UPDATED
Data mode	FAINT	FAINT	On-chip summing requested	N	N
Observation mode	SECONDARY	SECONDARY	Subarray requested	NONE	NONE
[deg] Pointing RA	0	52.8270450627282	Alternating exposures requested	N	N
[deg] Pointing Dec	0	43.88345272342546	[s] Primary exposure time	0.000000	3.2
[deg] Pointing Roll	0.0	280.5198603247452			
[mm] SIM focus pos	-0.782348	-0.6828225247311905			
[mm] SIM defocus	0	0.8505141146731063			
[mm] SIM translation stage pos	-233.592463	250.466033080201			
[mm] SIM translation stage offset	0	-0.01005468664627074			
[s] Observation start time (MET)	66462940.702	66462939.933625			
Observation start date	2000-02-09T05:55:41	2000-02-09T05:55:39			
[s] Observation end time (MET)	66471481.002	66471480.233936			
Observation end date	2000-02-09T08:18:01	2000-02-09T08:18:00			
Read mode	TIMED	TIMED			

2.3 Star Slots

2.4 FID Slots

A Summary

A.1 Status

V&V Scientist	Jen Lauer
V&V Date (YYYY-MM-DD)	2012.08.23
V&V Edition	1
V&V Disposition and Status	OK
V&V Charge Time	3.5167186350375

A.2 Comments