

V&V Reference Report

L2 ASCDS Version : 8.4.5

Observation 62178 - L2 Version 4
Chandra X-Ray Center

L2 Processing Date : Aug 22 2012

Contents

| | | |
|----------|-------------------------------|----------|
| 1 | Front | 2 |
| 2 | OBI | 3 |
| 2.1 | OBI | 3 |
| 2.1.1 | Images | 3 |
| 2.1.2 | Bias | 3 |
| 2.1.3 | Parameters | 4 |
| 2.1.4 | Events | 4 |
| 2.2 | Compared Parameters | 5 |
| 2.3 | Star Slots | 6 |
| 2.4 | FID Slots | 6 |
| A | Summary | 7 |
| A.1 | Status | 7 |
| A.2 | Comments | 7 |

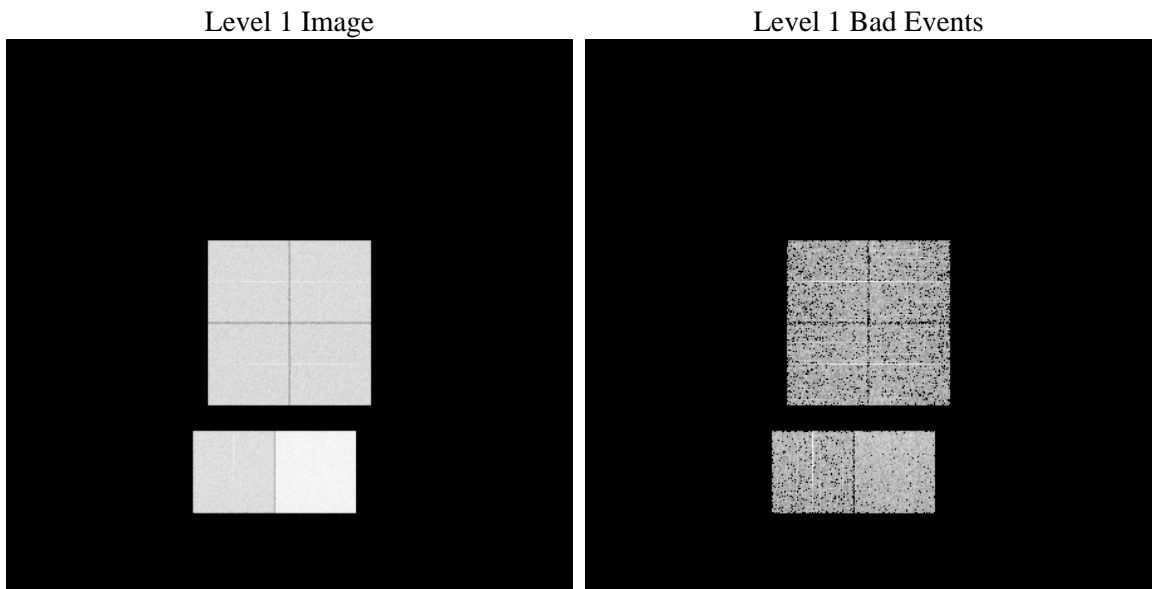
1 Front

| | | |
|----------|---|---|
| seq_num | | Sequence number |
| obs_id | 62178 | Observation id |
| title | ACIS-012367 diagnostics | Proposal title |
| observer | CHANDRA engineering request/realtime commanding | Principal investig |
| object | | Source name |
| dtcycle | 0 | |
| cycle | P | events from which exps? Prim/Second/Both |
| ra_targ | 0.0 | Observer's specified target RA [deg] |
| dec_targ | 0.0 | Observer's specified target Dec [deg] |
| ra_nom | 201.33327420793 | Nominal RA [deg] |
| dec_nom | -38.387087791065 | Nominal Dec [deg] |
| roll_nom | 57.174174065402 | Nominal Roll [deg] |
| revision | 4 | Processing version of data |
| ontime | 3510.2386942878 | Sum of GTIs [s] |
| livetime | 3465.7899383288 | Livetime [s] |
| ontime0 | 1450.6848966926 | Sum of GTIs [s] |
| ontime1 | 1453.9670864195 | Sum of GTIs [s] |
| ontime2 | 1374.4129792303 | Sum of GTIs [s] |
| ontime3 | 1382.5410862789 | Sum of GTIs [s] |
| ontime6 | 1549.4289799854 | Sum of GTIs [s] |
| ontime7 | 3510.2386942878 | Sum of GTIs [s] |
| l2events | 931654 | Number of level 2 events |

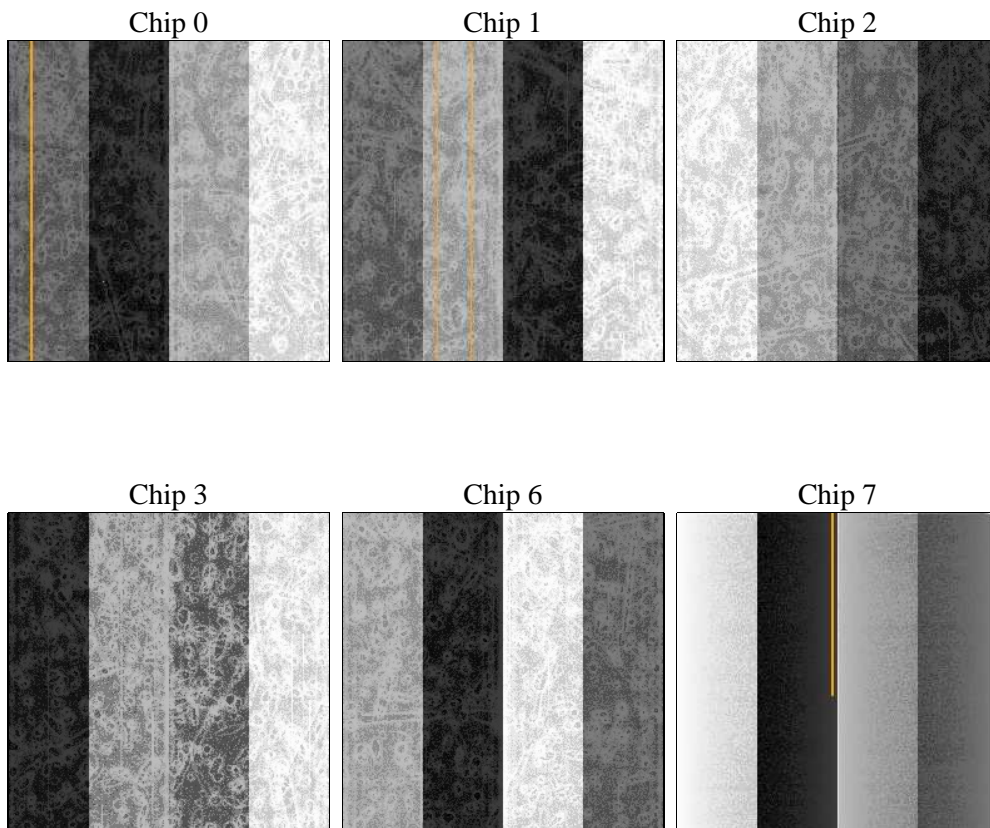
2 OBI

2.1 OBI

2.1.1 Images



2.1.2 Bias



2.1.3 Parameters

| | | | | | |
|----------|---------------------|--------------------------------|----------------|-----------------|---|
| obi_num | 1 | Obi number | sched_exp_time | 0.0 | [s] Scheduled observation exposure time |
| ascdsver | 8.4.5 | Processing system revision | ontime | 3510.2386942878 | Sum of GTIs [s] |
| caldbver | 4.5.1.1 | | ontime0 | 1450.6848966926 | Sum of GTIs [s] |
| date | 2012-08-22T14:16:46 | Date and time of file creation | ontime1 | 1453.9670864195 | Sum of GTIs [s] |
| revision | 4 | Processing version of data | ontime2 | 1374.4129792303 | Sum of GTIs [s] |
| | | | ontime3 | 1382.5410862789 | Sum of GTIs [s] |
| | | | ontime6 | 1549.4289799854 | Sum of GTIs [s] |
| | | | ontime7 | 3510.2386942878 | Sum of GTIs [s] |
| | | | l1events | 1063642 | Number of level 1 events |

2.1.4 Events

| | ccd 0 | ccd 1 | ccd 2 | ccd 3 | ccd 6 | ccd 7 | | ccd 0 | ccd 1 | ccd 2 | ccd 3 | ccd 6 | ccd 7 |
|-----------------|--------|--------|--------|--------|--------|--------|----------------|-------|-------|-------|-------|-------|--------|
| level 1 events | 141673 | 143528 | 137087 | 137658 | 159299 | 344397 | grade 0 events | 70513 | 71141 | 68413 | 68701 | 78218 | 83347 |
| rejected events | 13784 | 14527 | 14569 | 14455 | 15621 | 20159 | | 49% | 49% | 49% | 49% | 49% | 24% |
| rejected % | 9% | 10% | 10% | 10% | 9% | 5% | grade 1 events | 472 | 402 | 442 | 444 | 482 | 235 |
| | | | | | | | | 0% | 0% | 0% | 0% | 0% | 0% |
| | | | | | | | grade 2 events | 22419 | 22585 | 21421 | 21690 | 25077 | 72049 |
| | | | | | | | | 15% | 15% | 15% | 15% | 15% | 20% |
| | | | | | | | grade 3 events | 8289 | 8317 | 7893 | 7658 | 8951 | 33572 |
| | | | | | | | | 5% | 5% | 5% | 5% | 5% | 9% |
| | | | | | | | grade 4 events | 8065 | 8252 | 7752 | 8009 | 9075 | 33147 |
| | | | | | | | | 5% | 5% | 5% | 5% | 5% | 9% |
| | | | | | | | grade 5 events | 1097 | 1061 | 1019 | 1022 | 1248 | 4625 |
| | | | | | | | | 0% | 0% | 0% | 0% | 0% | 1% |
| | | | | | | | grade 6 events | 18603 | 18706 | 17326 | 17145 | 22651 | 102441 |
| | | | | | | | | 13% | 13% | 12% | 12% | 14% | 29% |
| | | | | | | | grade 7 events | 12215 | 13064 | 12821 | 12989 | 13597 | 14981 |
| | | | | | | | | 8% | 9% | 9% | 9% | 8% | 4% |

2.2 Compared Parameters

| Parameter | Planned | Actual | Parameter | Planned | Actual |
|-----------------------------------|---------------------|----------------------|---------------------------------|-----------|---------|
| Instrument | ACIS | ACIS | Obspar format version number | 7 | 7 |
| Detector | ACIS-012367 | ACIS-012367 | Obspar file type | PREDICTED | ACTUAL |
| Grating | NONE | NONE | Obspar update status | NONE | UPDATED |
| Data mode | FAINT | FAINT | On-chip summing requested | N | N |
| Observation mode | SECONDARY | SECONDARY | Subarray requested | NONE | NONE |
| [deg] Pointing RA | 0 | 201.3332742079348 | Alternating exposures requested | N | N |
| [deg] Pointing Dec | 0 | -38.38708779106466 | [s] Primary exposure time | 0.000000 | 3.2 |
| [deg] Pointing Roll | 0.0 | 57.17417406540177 | | | |
| [mm] SIM focus pos | -0.782348 | -1.038866356238299 | | | |
| [mm] SIM defocus | 0 | 0.4944702831659975 | | | |
| [mm] SIM translation stage pos | -233.592463 | 250.466033080201 | | | |
| [mm] SIM translation stage offset | 0 | -0.01005468664627074 | | | |
| [s] Observation start time (MET) | 66691763.76 | 66691762.991964 | | | |
| Observation start date | 2000-02-11T21:29:24 | 2000-02-11T21:29:22 | | | |
| [s] Observation end time (MET) | 66700039.611 | 66700038.842265 | | | |
| Observation end date | 2000-02-11T23:47:20 | 2000-02-11T23:47:18 | | | |
| Read mode | TIMED | TIMED | | | |

2.3 Star Slots

2.4 FID Slots

A Summary

A.1 Status

| | |
|----------------------------|-----------------|
| V&V Scientist | Jen Lauer |
| V&V Date (YYYY-MM-DD) | 2012.08.23 |
| V&V Edition | 1 |
| V&V Disposition and Status | OK |
| V&V Charge Time | 3.5102386942878 |

A.2 Comments