

V&V Reference Report

L2 ASCDS Version : 8.4.5

Observation 62177 - L2 Version 4
Chandra X-Ray Center

L2 Processing Date : Aug 22 2012

Contents

1	Front	2
2	OBI	3
2.1	OBI	3
2.1.1	Images	3
2.1.2	Bias	3
2.1.3	Parameters	4
2.1.4	Events	4
2.2	Compared Parameters	5
2.3	Star Slots	6
2.4	FID Slots	6
A	Summary	7
A.1	Status	7
A.2	Comments	7

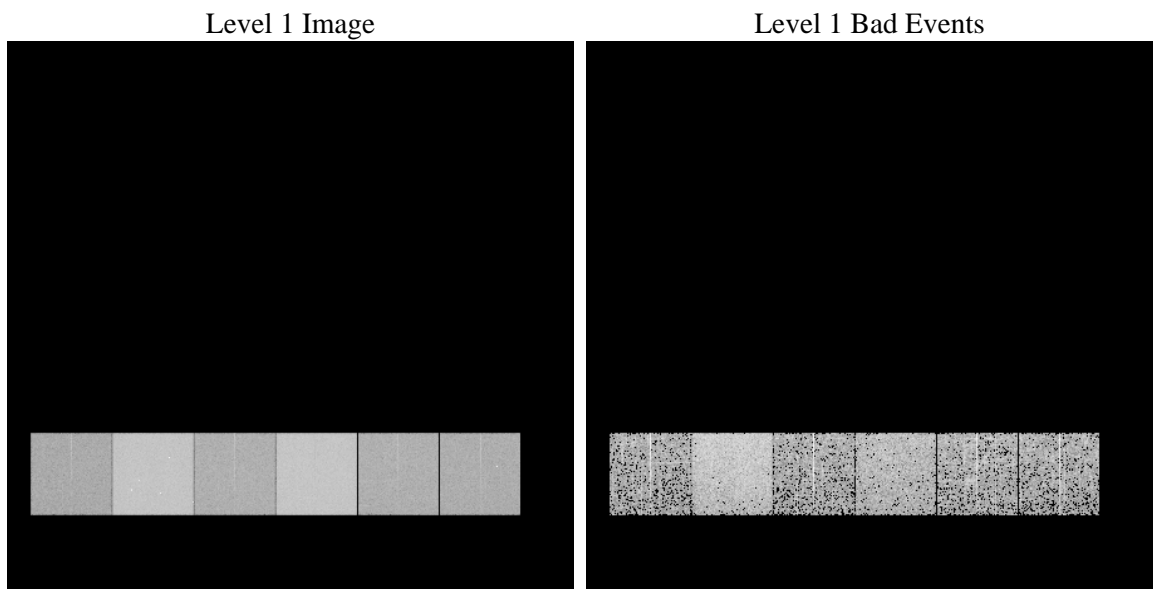
1 Front

seq_num	 	Sequence number
obs_id	62177	Observation id
title	ACIS-456789 diagnostics	Proposal title
observer	CHANDRA engineering request/realtime commanding	Principal investig
object	 	Source name
dtcycle	0	
cycle	P	events from which exps? Prim/Second/Both
ra_targ	0.0	Observer's specified target RA [deg]
dec_targ	0.0	Observer's specified target Dec [deg]
ra_nom	201.33346369549	Nominal RA [deg]
dec_nom	-38.385494492548	Nominal Dec [deg]
roll_nom	57.186443816581	Nominal Roll [deg]
revision	4	Processing version of data
ontime	2904.2168902159	Sum of GTIs [s]
livetime	2867.4419472425	Livetime [s]
ontime4	1146.391901888	Sum of GTIs [s]
ontime5	3124.6038603857	Sum of GTIs [s]
ontime6	1301.9207024053	Sum of GTIs [s]
ontime7	2904.2168902159	Sum of GTIs [s]
ontime8	1289.0386223793	Sum of GTIs [s]
ontime9	1253.1819823086	Sum of GTIs [s]
l2events	929919	Number of level 2 events

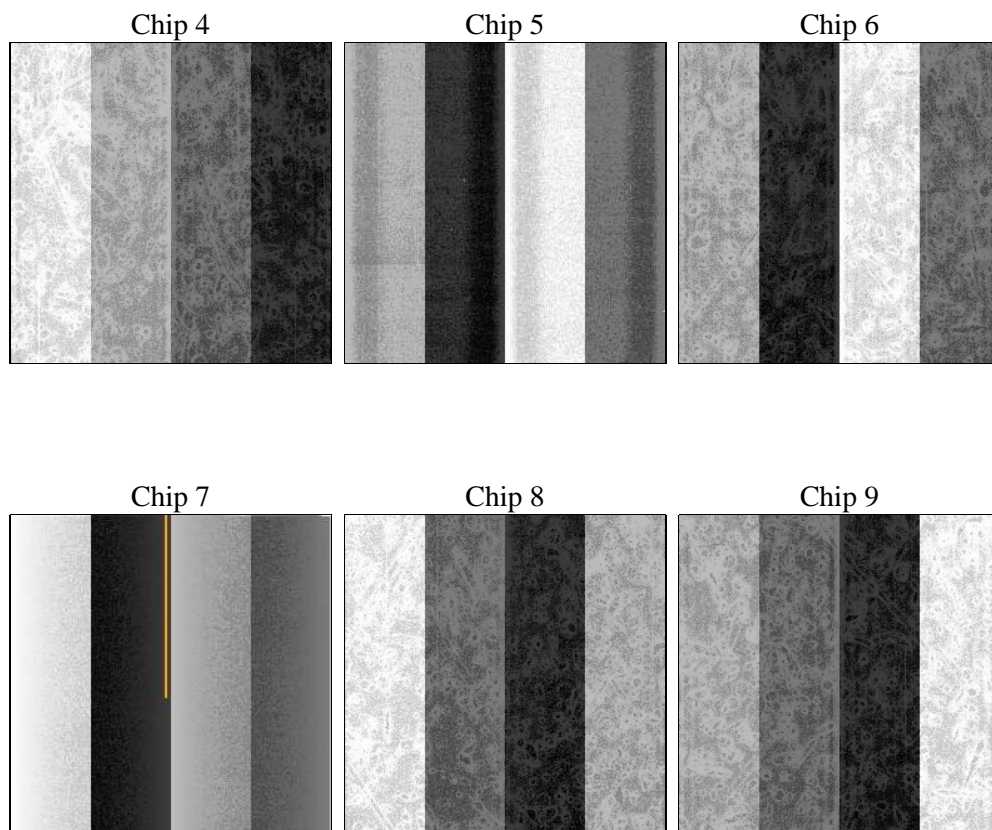
2 OBI

2.1 OBI

2.1.1 Images



2.1.2 Bias



2.1.3 Parameters

obi_num	1	Obi number	sched_exp_time	0.0	[s] Scheduled observation exposure time
ascdsver	8.4.5	Processing system revision	ontime	2904.2168902159	Sum of GTIs [s]
caldsver	4.5.1.1	 	ontime4	1146.391901888	Sum of GTIs [s]
date	2012-08-22T14:32:57	Date and time of file creation	ontime5	3124.6038603857	Sum of GTIs [s]
revision	4	Processing version of data	ontime6	1301.9207024053	Sum of GTIs [s]
			ontime7	2904.2168902159	Sum of GTIs [s]
			ontime8	1289.0386223793	Sum of GTIs [s]
			ontime9	1253.1819823086	Sum of GTIs [s]
			l1events	1063694	Number of level 1 events

2.1.4 Events

	ccd 4	ccd 5	ccd 6	ccd 7	ccd 8	ccd 9		ccd 4	ccd 5	ccd 6	ccd 7	ccd 8	ccd 9
level 1 events	110323	276630	134214	284691	133464	124372	grade 0 events	55555	66298	66741	69431	66097	61202
rejected events	12348	25326	12641	16656	13895	12593		50%	23%	49%	24%	49%	49%
rejected %	11%	9%	9%	5%	10%	10%	grade 1 events	372	249	390	215	388	372
								0%	0%	0%	0%	0%	0%
							grade 2 events	17144	85650	21164	60027	20794	19912
								15%	30%	15%	21%	15%	16%
							grade 3 events	6051	17511	7460	27756	7483	6893
								5%	6%	5%	9%	5%	5%
							grade 4 events	5938	17274	7421	27540	7726	6978
								5%	6%	5%	9%	5%	5%
							grade 5 events	856	5264	1000	3751	1057	966
								0%	1%	0%	1%	0%	0%
							grade 6 events	13287	64832	18787	83566	17469	16794
								12%	23%	13%	29%	13%	13%
							grade 7 events	11120	19552	11251	12405	12450	11255
								10%	7%	8%	4%	9%	9%

2.2 Compared Parameters

Parameter	Planned	Actual	Parameter	Planned	Actual
Instrument	ACIS	ACIS	Obspar format version number	7	7
Detector	ACIS-456789	ACIS-456789	Obspar file type	PREDICTED	ACTUAL
Grating	NONE	NONE	Obspar update status	NONE	UPDATED
Data mode	FAINT	FAINT	On-chip summing requested	N	N
Observation mode	SECONDARY	SECONDARY	Subarray requested	NONE	NONE
[deg] Pointing RA	0	201.3334636954871	Alternating exposures requested	N	N
[deg] Pointing Dec	0	-38.38549449254795	[s] Primary exposure time	0.000000	3.2
[deg] Pointing Roll	0.0	57.18644381658083			
[mm] SIM focus pos	-0.684267	-1.038866356238299			
[mm] SIM defocus	0	0.4944702831659975			
[mm] SIM translation stage pos	-190.132523	250.466033080201			
[mm] SIM translation stage offset	0	-0.01005468664627074			
[s] Observation start time (MET)	66700039.611	66700038.842265			
Observation start date	2000-02-11T23:47:20	2000-02-11T23:47:18			
[s] Observation end time (MET)	66741699.712	66741698.943784			
Observation end date	2000-02-12T11:21:40	2000-02-12T11:21:38			
Read mode	TIMED	TIMED			

2.3 Star Slots

2.4 FID Slots

A Summary

A.1 Status

V&V Scientist	Jen Lauer
V&V Date (YYYY-MM-DD)	2012.08.23
V&V Edition	1
V&V Disposition and Status	OK
V&V Charge Time	2.9042168902159

A.2 Comments