

# V&V Reference Report

## L2 ASCDS Version : 8.4.5

Observation 62131 - L2 Version 4  
Chandra X-Ray Center

L2 Processing Date : Aug 24 2012

## Contents

<b>1</b>	<b>Front</b>	<b>2</b>
<b>2</b>	<b>OBI</b>	<b>3</b>
2.1	OBI . . . . .	3
2.1.1	Images . . . . .	3
2.1.2	Bias . . . . .	3
2.1.3	Parameters . . . . .	4
2.1.4	Events . . . . .	4
2.2	Compared Parameters . . . . .	5
2.3	Star Slots . . . . .	6
2.4	FID Slots . . . . .	6
<b>A</b>	<b>Summary</b>	<b>7</b>
A.1	Status . . . . .	7
A.2	Comments . . . . .	7

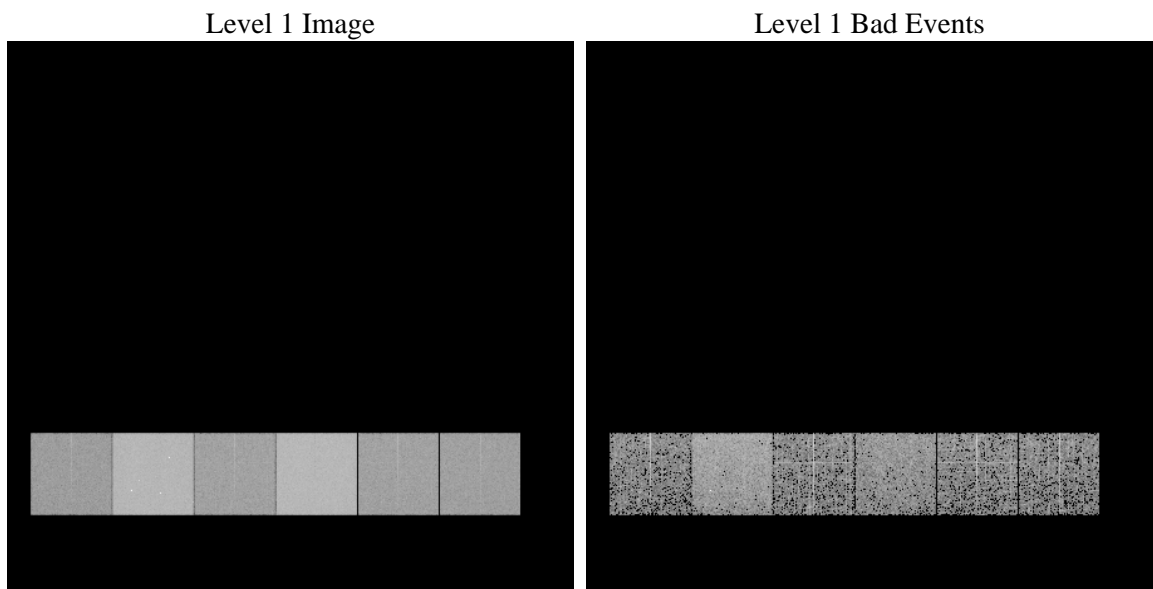
# 1 Front

seq_num	&#160	Sequence number
obs_id	62131	Observation id
title	ACIS-456789 diagnostics	Proposal title
observer	CHANDRA engineering request/realtime commanding	Principal investig
object	&#160	Source name
dtcycle	0	&#160
cycle	P	events from which exps? Prim/Second/Both
ra_targ	0.0	Observer's specified target RA [deg]
dec_targ	0.0	Observer's specified target Dec [deg]
ra_nom	257.38506679173	Nominal RA [deg]
dec_nom	-30.90265644545	Nominal Dec [deg]
roll_nom	85.021312702977	Nominal Roll [deg]
revision	4	Processing version of data
ontime	2965.7965245992	Sum of GTIs [s]
livetime	2928.2418232165	Livetime [s]
ontime4	1169.9887168556	Sum of GTIs [s]
ontime5	3160.2552048117	Sum of GTIs [s]
ontime6	1316.115973264	Sum of GTIs [s]
ontime7	2965.7965245992	Sum of GTIs [s]
ontime8	1296.4145707339	Sum of GTIs [s]
ontime9	1270.2967965901	Sum of GTIs [s]
l2events	926525	Number of level 2 events

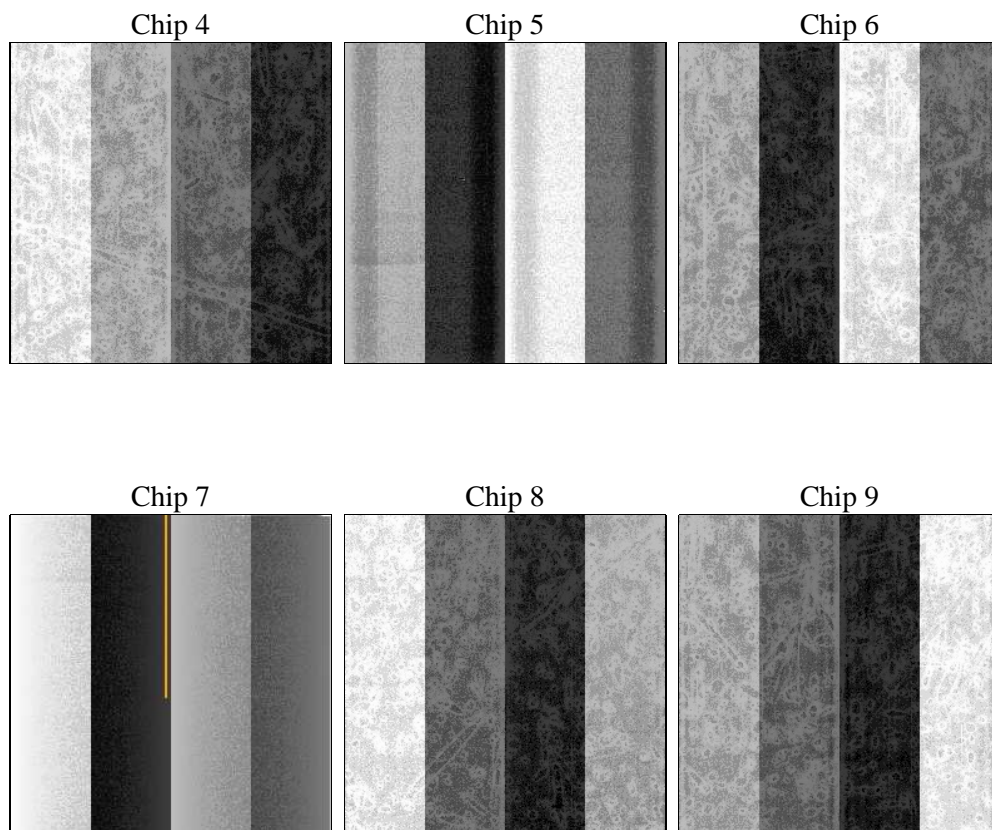
## 2 OBI

### 2.1 OBI

#### 2.1.1 Images



#### 2.1.2 Bias



### 2.1.3 Parameters

obi_num	0	Obi number	sched_exp_time	0.0	[s] Scheduled observation exposure time
ascdsver	8.4.5	Processing system revision	ontime	2965.7965245992	Sum of GTIs [s]
caldsver	4.5.1.1	&#160	ontime4	1169.9887168556	Sum of GTIs [s]
date	2012-08-24T06:55:18	Date and time of file creation	ontime5	3160.2552048117	Sum of GTIs [s]
revision	4	Processing version of data	ontime6	1316.115973264	Sum of GTIs [s]
			ontime7	2965.7965245992	Sum of GTIs [s]
			ontime8	1296.4145707339	Sum of GTIs [s]
			ontime9	1270.2967965901	Sum of GTIs [s]
			l1events	1063988	Number of level 1 events

### 2.1.4 Events

	ccd 4	ccd 5	ccd 6	ccd 7	ccd 8	ccd 9		ccd 4	ccd 5	ccd 6	ccd 7	ccd 8	ccd 9
level 1 events	111895	275845	134094	285736	132031	124387	grade 0 events	56080	65099	65751	69651	64897	61299
rejected events	12933	26390	14001	16927	14278	12710		50%	23%	49%	24%	49%	49%
rejected %	11%	9%	10%	5%	10%	10%	grade 1 events	367	377	374	181	376	378
								0%	0%	0%	0%	0%	0%
							grade 2 events	17301	85743	20798	59682	20678	19664
								15%	31%	15%	20%	15%	15%
							grade 3 events	6091	16808	7459	27447	7430	6815
								5%	6%	5%	9%	5%	5%
							grade 4 events	6081	16729	7638	27478	7434	7018
								5%	6%	5%	9%	5%	5%
							grade 5 events	856	5301	1006	3774	1095	984
								0%	1%	0%	1%	0%	0%
							grade 6 events	13409	65336	18732	84836	17314	16881
								11%	23%	13%	29%	13%	13%
							grade 7 events	11710	20452	12336	12687	12807	11348
								10%	7%	9%	4%	9%	9%

## 2.2 Compared Parameters

Parameter	Planned	Actual	Parameter	Planned	Actual
Instrument	ACIS	ACIS	Obspar format version number	7	7
Detector	ACIS-456789	ACIS-456789	Obspar file type	PREDICTED	ACTUAL
Grating	NONE	NONE	Obspar update status	NONE	UPDATED
Data mode	FAINT	FAINT	On-chip summing requested	N	N
Observation mode	SECONDARY	SECONDARY	Subarray requested	NONE	NONE
[deg] Pointing RA	0	257.3850667917345	Alternating exposures requested	N	N
[deg] Pointing Dec	0	-30.90265644544982	[s] Primary exposure time	3.2	3.2
[deg] Pointing Roll	0.0	85.0213127029769			
[mm] SIM focus pos	-0.684267	-1.038866356238299			
[mm] SIM defocus	0	0.4944702831659975			
[mm] SIM translation stage pos	-190.132523	250.466033080201			
[mm] SIM translation stage offset	0	-0.01005468664627074			
[s] Observation start time (MET)	68986000.898045	68986000.129576			
Observation start date	2000-03-09T10:46:41	2000-03-09T10:46:40			
[s] Observation end time (MET)	69031020.949689	69031020.18122			
Observation end date	2000-03-09T23:17:01	2000-03-09T23:17:00			
Read mode	TIMED	TIMED			

## **2.3 Star Slots**

## **2.4 FID Slots**

## A Summary

### A.1 Status

V&V Scientist	Jen Lauer
V&V Date (YYYY-MM-DD)	2012.08.27
V&V Edition	1
V&V Disposition and Status	OK
V&V Charge Time	2.9657965245992

### A.2 Comments