

V&V Reference Report

L2 ASCDS Version : 8.4.5

Observation 62130 - L2 Version 4
Chandra X-Ray Center

L2 Processing Date : Aug 24 2012

Contents

1	Front	2
2	OBI	3
2.1	OBI	3
2.1.1	Images	3
2.1.2	Bias	3
2.1.3	Parameters	4
2.1.4	Events	4
2.2	Compared Parameters	5
2.3	Star Slots	6
2.4	FID Slots	6
A	Summary	7
A.1	Status	7
A.2	Comments	7

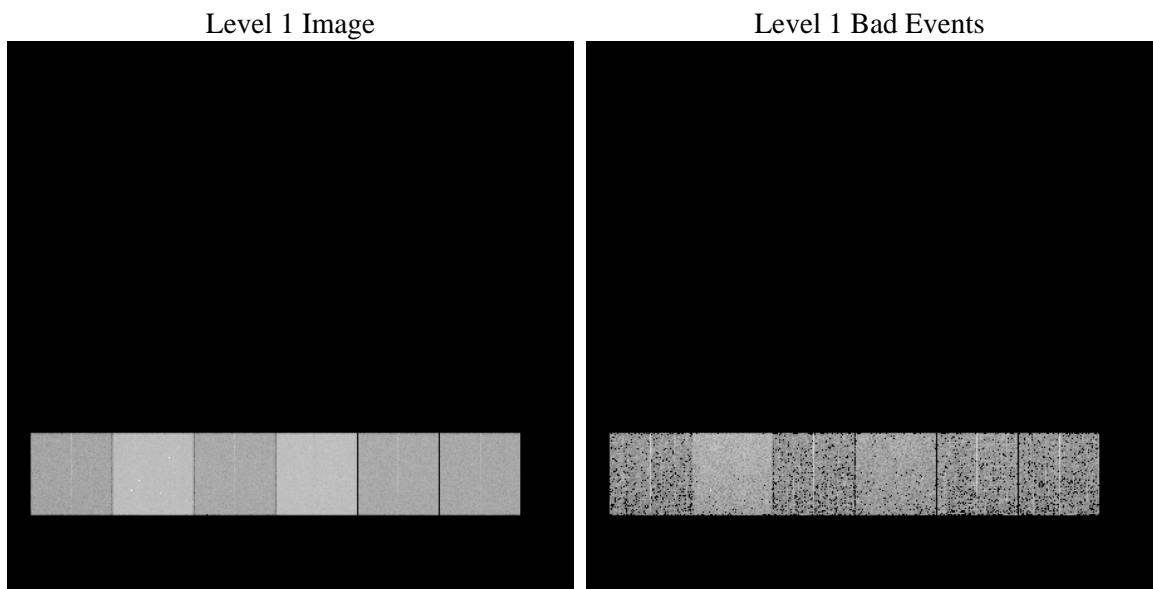
1 Front

seq_num	 	Sequence number
obs_id	62130	Observation id
title	ACIS-456789 diagnostics	Proposal title
observer	CHANDRA engineering request/realtime commanding	Principal investig
object	 	Source name
dtcycle	0	
cycle	P	events from which exps? Prim/Second/Both
ra_targ	0.0	Observer's specified target RA [deg]
dec_targ	0.0	Observer's specified target Dec [deg]
ra_nom	257.38449774269	Nominal RA [deg]
dec_nom	-30.902161442982	Nominal Dec [deg]
roll_nom	85.02018228142	Nominal Roll [deg]
revision	4	Processing version of data
ontime	2942.1956285983	Sum of GTIs [s]
livetime	2904.9397759715	Livetime [s]
ontime4	1173.2550111413	Sum of GTIs [s]
ontime5	3160.0002813339	Sum of GTIs [s]
ontime6	1302.8965509534	Sum of GTIs [s]
ontime7	2942.1956285983	Sum of GTIs [s]
ontime8	1306.1376807094	Sum of GTIs [s]
ontime9	1280.2093607783	Sum of GTIs [s]
l2events	923124	Number of level 2 events

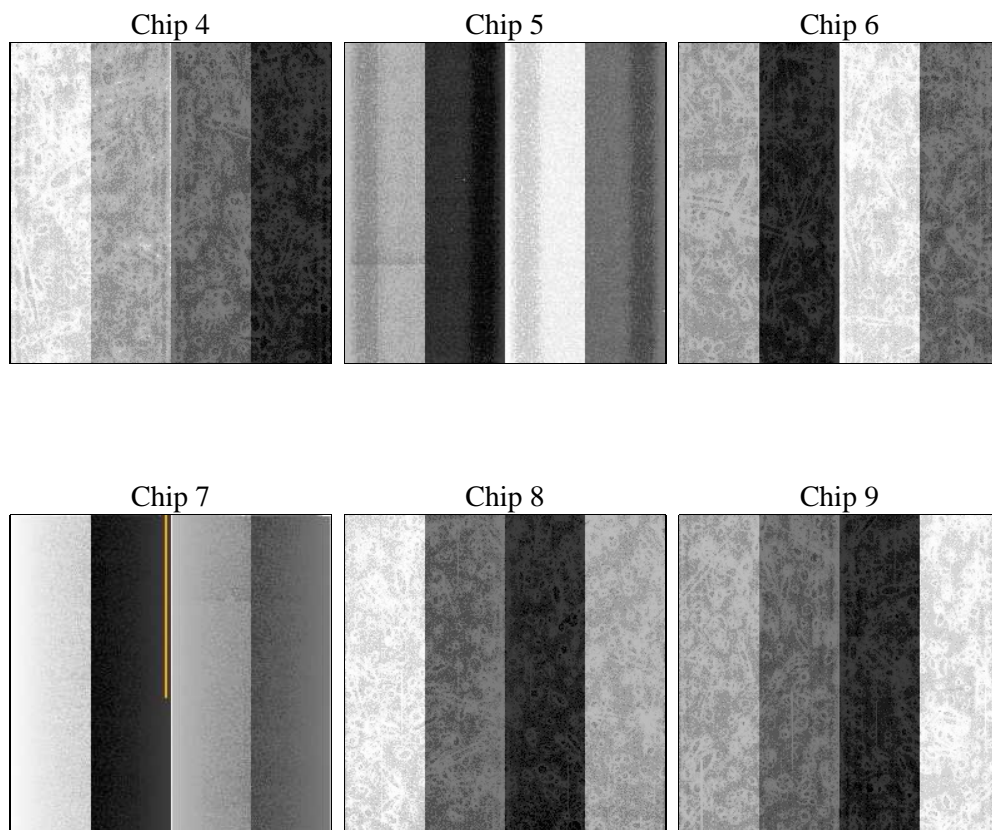
2 OBI

2.1 OBI

2.1.1 Images



2.1.2 Bias



2.1.3 Parameters

obi_num	0	Obi number	sched_exp_time	0.0	[s] Scheduled observation exposure time
ascdsver	8.4.5	Processing system revision	ontime	2942.1956285983	Sum of GTIs [s]
caldsver	4.5.1.1	 	ontime4	1173.2550111413	Sum of GTIs [s]
date	2012-08-24T07:10:51	Date and time of file creation	ontime5	3160.0002813339	Sum of GTIs [s]
revision	4	Processing version of data	ontime6	1302.8965509534	Sum of GTIs [s]
			ontime7	2942.1956285983	Sum of GTIs [s]
			ontime8	1306.1376807094	Sum of GTIs [s]
			ontime9	1280.2093607783	Sum of GTIs [s]
			l1events	1063955	Number of level 1 events

2.1.4 Events

	ccd 4	ccd 5	ccd 6	ccd 7	ccd 8	ccd 9		ccd 4	ccd 5	ccd 6	ccd 7	ccd 8	ccd 9
level 1 events	112315	275745	132680	284604	133866	124745	grade 0 events	56308	64739	65501	68616	65946	61685
rejected events	13642	27502	13493	18229	15145	12919		50%	23%	49%	24%	49%	49%
rejected %	12%	9%	10%	6%	11%	10%	grade 1 events	347	206	377	178	398	397
								0%	0%	0%	0%	0%	0%
							grade 2 events	17595	86096	20689	59089	21115	19736
								15%	31%	15%	20%	15%	15%
							grade 3 events	6117	16752	7384	27387	7626	6973
								5%	6%	5%	9%	5%	5%
							grade 4 events	6011	16840	7416	27054	7502	7017
								5%	6%	5%	9%	5%	5%
							grade 5 events	862	5429	972	3796	1048	956
								0%	1%	0%	1%	0%	0%
							grade 6 events	13490	65321	19084	85855	17426	16993
								12%	23%	14%	30%	13%	13%
							grade 7 events	11585	20362	11257	12629	12805	10988
								10%	7%	8%	4%	9%	8%

2.2 Compared Parameters

Parameter	Planned	Actual
Instrument	ACIS	ACIS
Detector	ACIS-456789	ACIS-456789
Grating	NONE	NONE
Data mode	FAINT	FAINT
Observation mode	SECONDARY	SECONDARY
[deg] Pointing RA	0	257.3844977426915
[deg] Pointing Dec	0	-30.90216144298151
[deg] Pointing Roll	0.0	85.02018228141969
[mm] SIM focus pos	-0.684267	-1.038866356238299
[mm] SIM defocus	0	0.4944702831659975
[mm] SIM translation stage pos	-190.132523	250.466033080201
[mm] SIM translation stage offset	0	-0.01005468664627074
[s] Observation start time (MET)	69031020.949689	69031020.18122
Observation start date	2000-03-09T23:17:01	2000-03-09T23:17:00
[s] Observation end time (MET)	69038320.999956	69038320.23148701
Observation end date	2000-03-10T01:18:41	2000-03-10T01:18:40
Read mode	TIMED	TIMED

Parameter	Planned	Actual
Obspar format version number	7	7
Obspar file type	PREDICTED	ACTUAL
Obspar update status	NONE	UPDATED
On-chip summing requested	N	N
Subarray requested	NONE	NONE
Alternating exposures requested	N	N
[s] Primary exposure time	3.2	3.2

2.3 Star Slots

2.4 FID Slots

A Summary

A.1 Status

V&V Scientist	Jen Lauer
V&V Date (YYYY-MM-DD)	2012.08.27
V&V Edition	1
V&V Disposition and Status	OK
V&V Charge Time	2.9421956285983

A.2 Comments