

V&V Reference Report

L2 ASCDS Version : 8.4.5

Observation 62126 - L2 Version 4
Chandra X-Ray Center

L2 Processing Date : Aug 24 2012

Contents

1	Front	2
2	OBI	3
2.1	OBI	3
2.1.1	Images	3
2.1.2	Bias	3
2.1.3	Parameters	4
2.1.4	Events	4
2.2	Compared Parameters	5
2.3	Star Slots	6
2.4	FID Slots	6
A	Summary	7
A.1	Status	7
A.2	Comments	7

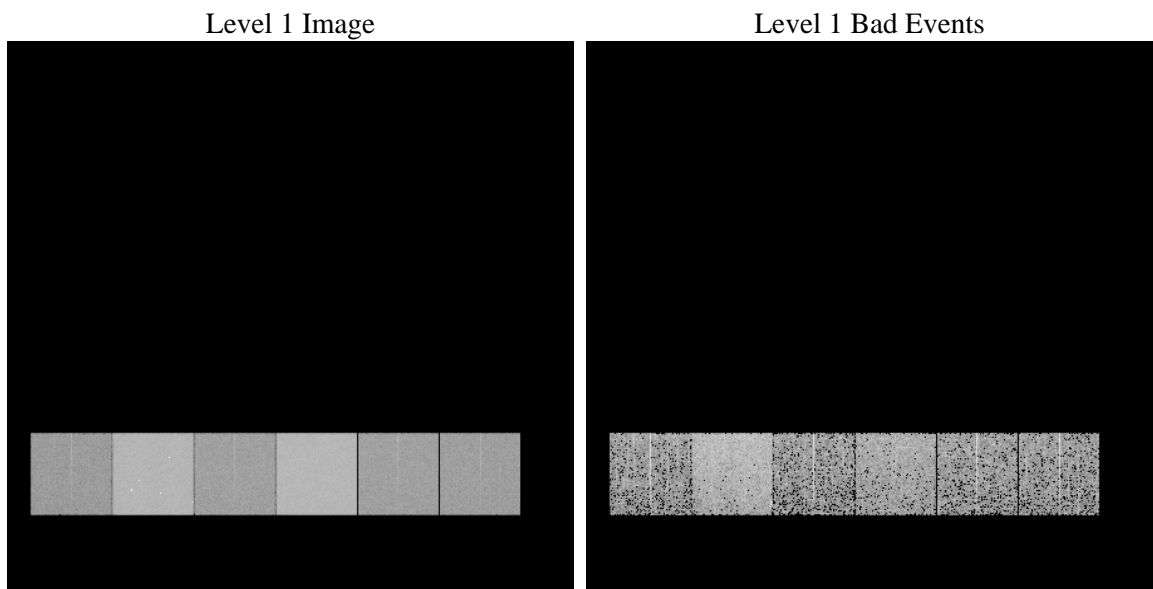
1 Front

seq_num	 	Sequence number
obs_id	62126	Observation id
title	ACIS-456789 diagnostics	Proposal title
observer	CHANDRA engineering request/realtime commanding	Principal investig
object	 	Source name
dtcycle	0	
cycle	P	events from which exps? Prim/Second/Both
ra_targ	0.0	Observer's specified target RA [deg]
dec_targ	0.0	Observer's specified target Dec [deg]
ra_nom	82.375884623472	Nominal RA [deg]
dec_nom	0.99848146825546	Nominal Dec [deg]
roll_nom	273.57702915639	Nominal Roll [deg]
revision	4	Processing version of data
ontime	2985.2024615556	Sum of GTIs [s]
livetime	2947.4020305143	Livetime [s]
ontime4	1154.0227133632	Sum of GTIs [s]
ontime5	3173.1787427664	Sum of GTIs [s]
ontime6	1299.0578769892	Sum of GTIs [s]
ontime7	2985.2024615556	Sum of GTIs [s]
ontime8	1318.5862268656	Sum of GTIs [s]
ontime9	1269.7653970718	Sum of GTIs [s]
l2events	925796	Number of level 2 events

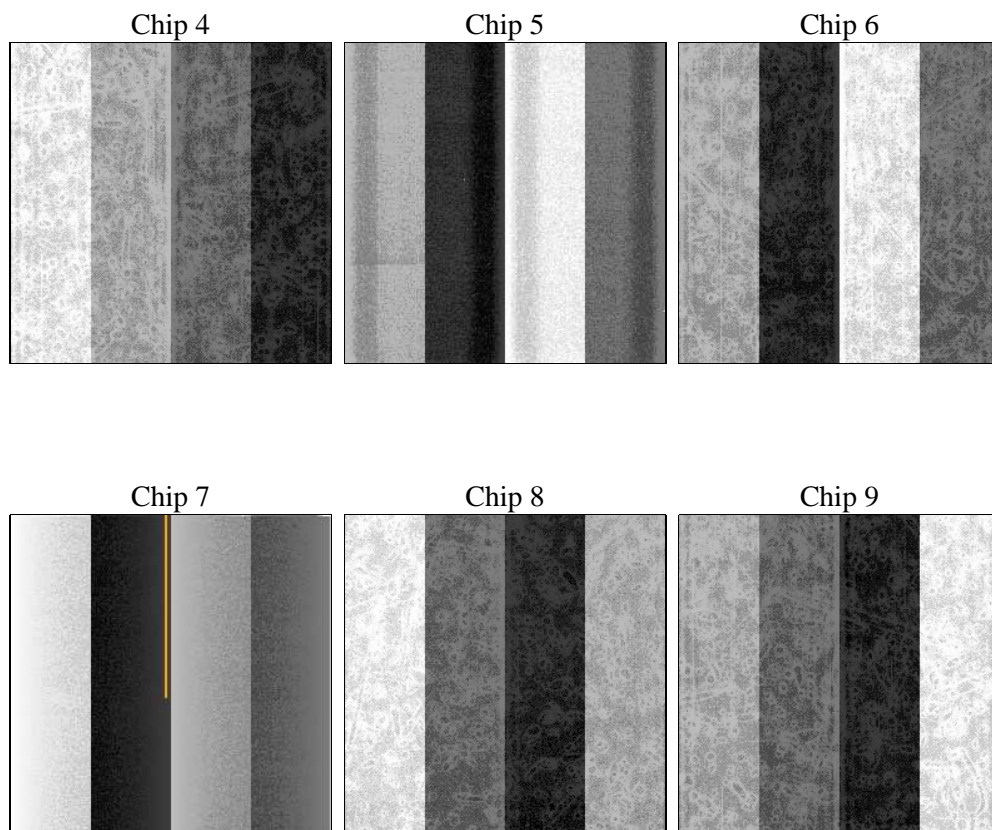
2 OBI

2.1 OBI

2.1.1 Images



2.1.2 Bias



2.1.3 Parameters

obi_num	0	Obi number	sched_exp_time	0.0	[s] Scheduled observation exposure time
ascdsver	8.4.5	Processing system revision	ontime	2985.2024615556	Sum of GTIs [s]
caldsver	4.5.1.1	 	ontime4	1154.0227133632	Sum of GTIs [s]
date	2012-08-24T09:41:31	Date and time of file creation	ontime5	3173.1787427664	Sum of GTIs [s]
revision	4	Processing version of data	ontime6	1299.0578769892	Sum of GTIs [s]
			ontime7	2985.2024615556	Sum of GTIs [s]
			ontime8	1318.5862268656	Sum of GTIs [s]
			ontime9	1269.7653970718	Sum of GTIs [s]
			l1events	1063698	Number of level 1 events

2.1.4 Events

	ccd 4	ccd 5	ccd 6	ccd 7	ccd 8	ccd 9		ccd 4	ccd 5	ccd 6	ccd 7	ccd 8	ccd 9
level 1 events	110772	277757	131367	286516	133198	124088	grade 0 events	55115	64794	64777	70246	66020	60745
rejected events	13590	26710	12743	17076	13477	12969		49%	23%	49%	24%	49%	48%
rejected %	12%	9%	9%	5%	10%	10%	grade 1 events	341	255	376	176	385	377
								0%	0%	0%	0%	0%	0%
							grade 2 events	17058	87345	20590	59740	21041	19662
								15%	31%	15%	20%	15%	15%
							grade 3 events	6015	16815	7349	27898	7627	6886
								5%	6%	5%	9%	5%	5%
							grade 4 events	6041	16656	7296	27575	7498	6917
								5%	5%	5%	9%	5%	5%
							grade 5 events	853	5427	993	3829	1013	1001
								0%	1%	0%	1%	0%	0%
							grade 6 events	13222	65680	18612	84273	17535	16909
								11%	23%	14%	29%	13%	13%
							grade 7 events	12127	20785	11374	12779	12079	11591
								10%	7%	8%	4%	9%	9%

2.2 Compared Parameters

Parameter	Planned	Actual
Instrument	ACIS	ACIS
Detector	ACIS-456789	ACIS-456789
Grating	NONE	NONE
Data mode	FAINT	FAINT
Observation mode	SECONDARY	SECONDARY
[deg] Pointing RA	0	82.3758846234721
[deg] Pointing Dec	0	0.9984814682554609
[deg] Pointing Roll	0.0	273.5770291563921
[mm] SIM focus pos	-0.684267	-0.7809083437167272
[mm] SIM defocus	0	0.7524282956875696
[mm] SIM translation stage pos	-190.132523	250.4635187648994
[mm] SIM translation stage offset	0	-0.007540371344731511
[s] Observation start time (MET)	69212825.206	69212824.43786199
Observation start date	2000-03-12T01:47:05	2000-03-12T01:47:04
[s] Observation end time (MET)	69257486.508	69257485.73949701
Observation end date	2000-03-12T14:11:27	2000-03-12T14:11:25
Read mode	TIMED	TIMED

Parameter	Planned	Actual
Obspar format version number	7	7
Obspar file type	PREDICTED	ACTUAL
Obspar update status	NONE	UPDATED
On-chip summing requested	N	N
Subarray requested	NONE	NONE
Alternating exposures requested	N	N
[s] Primary exposure time	0.000000	3.2

2.3 Star Slots

2.4 FID Slots

A Summary

A.1 Status

V&V Scientist	Jen Lauer
V&V Date (YYYY-MM-DD)	2012.08.27
V&V Edition	1
V&V Disposition and Status	OK
V&V Charge Time	2.9852024615556

A.2 Comments