

# V&V Reference Report

## L2 ASCDS Version : 8.4.5

Observation 62119 - L2 Version 4  
Chandra X-Ray Center

L2 Processing Date : Aug 24 2012

## Contents

<b>1</b>	<b>Front</b>	<b>2</b>
<b>2</b>	<b>OBI</b>	<b>3</b>
2.1	OBI . . . . .	3
2.1.1	Images . . . . .	3
2.1.2	Bias . . . . .	3
2.1.3	Parameters . . . . .	4
2.1.4	Events . . . . .	4
2.2	Compared Parameters . . . . .	5
2.3	Star Slots . . . . .	6
2.4	FID Slots . . . . .	6
<b>A</b>	<b>Summary</b>	<b>7</b>
A.1	Status . . . . .	7
A.2	Comments . . . . .	7

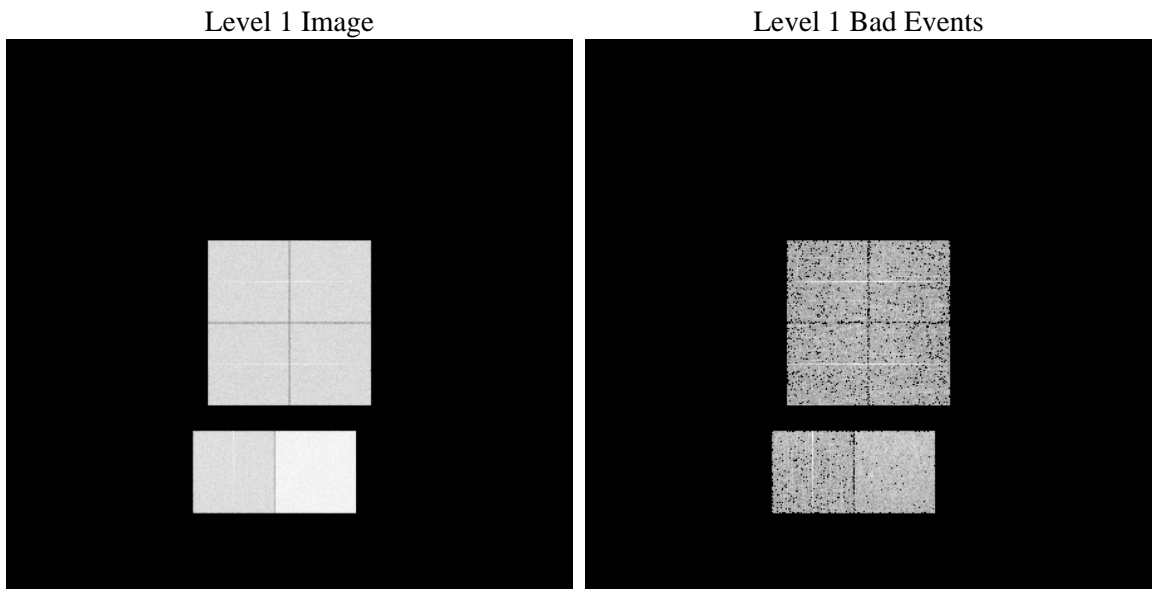
# 1 Front

seq_num	&#160	Sequence number
obs_id	62119	Observation id
title	ACIS-012367 diagnostics	Proposal title
observer	CHANDRA engineering request/realtime commanding	Principal investig
object	&#160	Source name
dtcycle	0	&#160
cycle	P	events from which exps? Prim/Second/Both
ra_targ	0.0	Observer's specified target RA [deg]
dec_targ	0.0	Observer's specified target Dec [deg]
ra_nom	88.2181282091	Nominal RA [deg]
dec_nom	-28.023978043766	Nominal Dec [deg]
roll_nom	271.56961389005	Nominal Roll [deg]
revision	4	Processing version of data
ontime	3517.1393912733	Sum of GTIs [s]
livetime	3472.6032545339	Livetime [s]
ontime0	1459.0586957037	Sum of GTIs [s]
ontime1	1490.8768405318	Sum of GTIs [s]
ontime2	1397.3968757987	Sum of GTIs [s]
ontime3	1439.0202006698	Sum of GTIs [s]
ontime6	1559.4076559246	Sum of GTIs [s]
ontime7	3517.1393912733	Sum of GTIs [s]
l2events	920285	Number of level 2 events

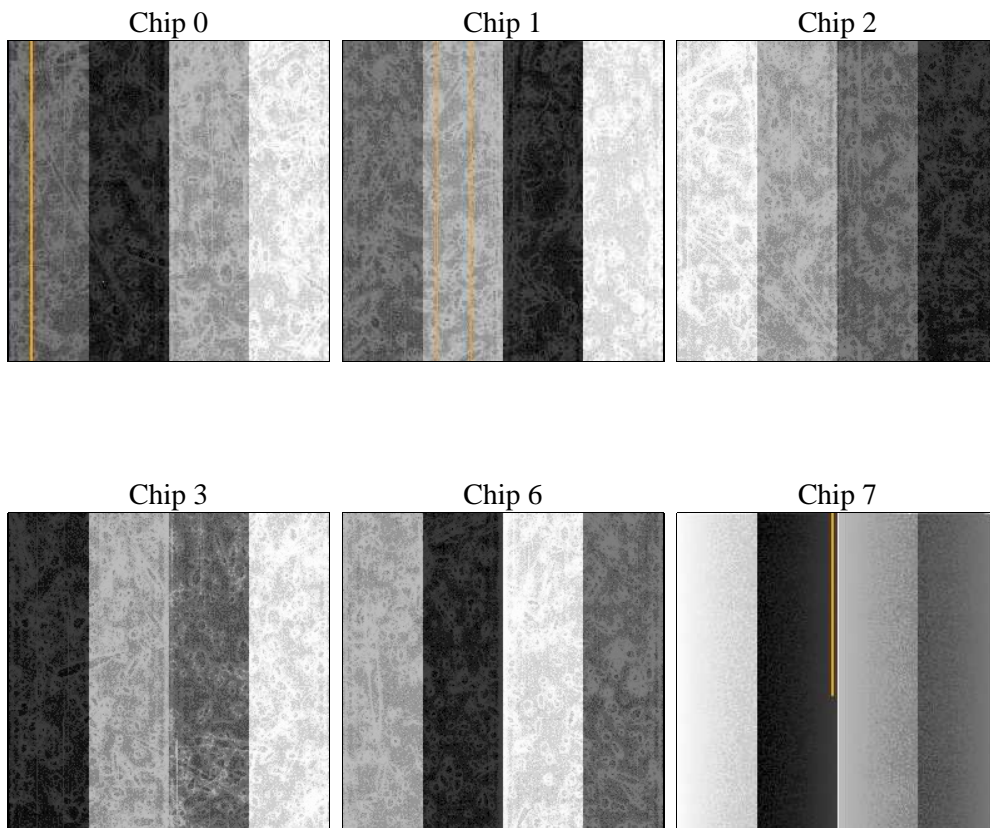
## 2 OBI

### 2.1 OBI

#### 2.1.1 Images



#### 2.1.2 Bias



### 2.1.3 Parameters

obi_num	0	Obi number	sched_exp_time	0.0	[s] Scheduled observation exposure time
ascdsver	8.4.5	Processing system revision	ontime	3517.1393912733	Sum of GTIs [s]
caldsver	4.5.1.1	&#160	ontime0	1459.0586957037	Sum of GTIs [s]
date	2012-08-24T14:40:06	Date and time of file creation	ontime1	1490.8768405318	Sum of GTIs [s]
revision	4	Processing version of data	ontime2	1397.3968757987	Sum of GTIs [s]
			ontime3	1439.0202006698	Sum of GTIs [s]
			ontime6	1559.4076559246	Sum of GTIs [s]
			ontime7	3517.1393912733	Sum of GTIs [s]
			l1events	1062562	Number of level 1 events

### 2.1.4 Events

	ccd 0	ccd 1	ccd 2	ccd 3	ccd 6	ccd 7		ccd 0	ccd 1	ccd 2	ccd 3	ccd 6	ccd 7
level 1 events	140628	144403	137475	140495	159020	340541	grade 0 events	70299	72371	68763	70685	78611	81845
rejected events	15144	15810	15921	15831	17402	24442		49%	50%	50%	50%	49%	24%
rejected %	10%	10%	11%	11%	10%	7%	grade 1 events	439	386	390	422	426	240
								0%	0%	0%	0%	0%	0%
							grade 2 events	22395	22936	21741	22269	24960	71118
								15%	15%	15%	15%	15%	20%
							grade 3 events	8067	8274	7846	7973	8825	33052
								5%	5%	5%	5%	5%	9%
							grade 4 events	8148	8271	7720	8128	8761	32539
								5%	5%	5%	5%	5%	9%
							grade 5 events	1027	1033	982	1008	1181	4723
								0%	0%	0%	0%	0%	1%
							grade 6 events	18510	18657	17500	17414	22579	101938
								13%	12%	12%	12%	14%	29%
							grade 7 events	11743	12475	12533	12596	13677	15086
								8%	8%	9%	8%	8%	4%

## 2.2 Compared Parameters

Parameter	Planned	Actual
Instrument	ACIS	ACIS
Detector	ACIS-012367	ACIS-012367
Grating	NONE	NONE
Data mode	FAINT	FAINT
Observation mode	SECONDARY	SECONDARY
[deg] Pointing RA	0	88.21812820910021
[deg] Pointing Dec	0	-28.02397804376615
[deg] Pointing Roll	0.0	271.5696138900504
[mm] SIM focus pos	-0.782348	-0.7809083437167272
[mm] SIM defocus	0	0.7524282956875696
[mm] SIM translation stage pos	-233.592463	250.466033080201
[mm] SIM translation stage offset	0	-0.01005468664627074
[s] Observation start time (MET)	69662511.17276999	69662510.404304
Observation start date	2000-03-17T06:41:51	2000-03-17T06:41:50
[s] Observation end time (MET)	69671057.623083	69671056.854616
Observation end date	2000-03-17T09:04:18	2000-03-17T09:04:16
Read mode	TIMED	TIMED

Parameter	Planned	Actual
Obspar format version number	7	7
Obspar file type	PREDICTED	ACTUAL
Obspar update status	NONE	UPDATED
On-chip summing requested	N	N
Subarray requested	NONE	NONE
Alternating exposures requested	N	N
[s] Primary exposure time	3.2	3.2

## 2.3 Star Slots

## 2.4 FID Slots

## A Summary

### A.1 Status

V&V Scientist	Jen Lauer
V&V Date (YYYY-MM-DD)	2012.08.27
V&V Edition	1
V&V Disposition and Status	OK
V&V Charge Time	3.5171393912733

### A.2 Comments