

# V&V Reference Report

## L2 ASCDS Version : 8.4.5

Observation 62103 - L2 Version 4  
Chandra X-Ray Center

L2 Processing Date : Aug 25 2012

## Contents

<b>1</b>	<b>Front</b>	<b>2</b>
<b>2</b>	<b>OBI</b>	<b>3</b>
2.1	OBI . . . . .	3
2.1.1	Images . . . . .	3
2.1.2	Bias . . . . .	3
2.1.3	Parameters . . . . .	4
2.1.4	Events . . . . .	4
2.2	Compared Parameters . . . . .	5
2.3	Star Slots . . . . .	6
2.4	FID Slots . . . . .	6
<b>A</b>	<b>Summary</b>	<b>7</b>
A.1	Status . . . . .	7
A.2	Comments . . . . .	7

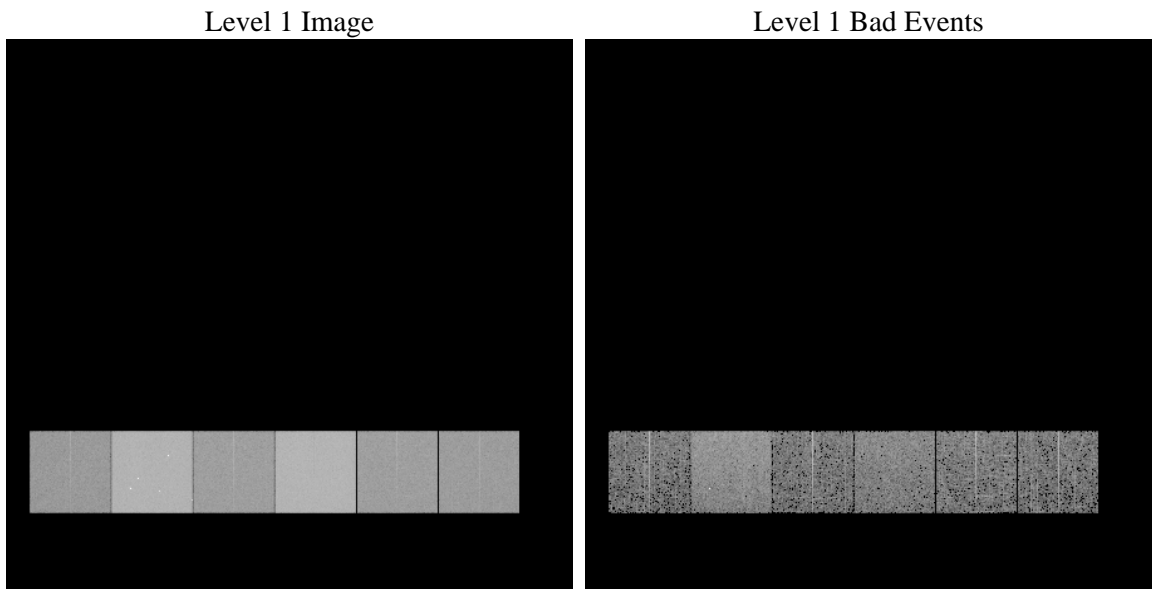
# 1 Front

seq_num	&#160	Sequence number
obs_id	62103	Observation id
title	ACIS-456789 diagnostics	Proposal title
observer	CHANDRA engineering request/realtime commanding	Principal investig
object	&#160	Source name
dtcycle	0	&#160
cycle	P	events from which exps? Prim/Second/Both
ra_targ	0.0	Observer's specified target RA [deg]
dec_targ	0.0	Observer's specified target Dec [deg]
ra_nom	283.26702742974	Nominal RA [deg]
dec_nom	-62.233602754664	Nominal Dec [deg]
roll_nom	96.824851049859	Nominal Roll [deg]
revision	4	Processing version of data
ontime	4122.9462129027	Sum of GTIs [s]
livetime	4070.7389854147	Livetime [s]
ontime4	1639.9647700787	Sum of GTIs [s]
ontime5	4411.3524675369	Sum of GTIs [s]
ontime6	1857.3880368024	Sum of GTIs [s]
ontime7	4122.9462129027	Sum of GTIs [s]
ontime8	1841.1007867604	Sum of GTIs [s]
ontime9	1763.1242897511	Sum of GTIs [s]
l2events	1282164	Number of level 2 events

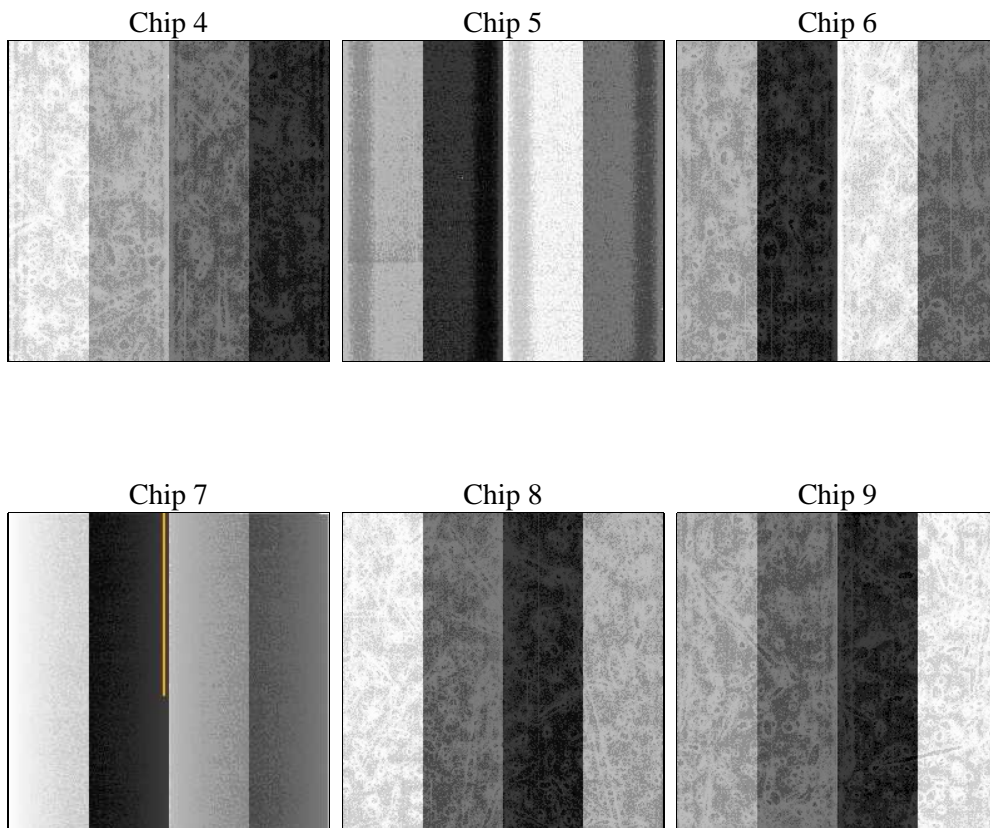
## 2 OBI

### 2.1 OBI

#### 2.1.1 Images



#### 2.1.2 Bias



### 2.1.3 Parameters

obi_num	0	Obi number	sched_exp_time	0.0	[s] Scheduled observation exposure time
ascdsver	8.4.5	Processing system revision	ontime	4122.9462129027	Sum of GTIs [s]
caldbver	4.5.1.1	&#160	ontime4	1639.9647700787	Sum of GTIs [s]
date	2012-08-25T09:55:18	Date and time of file creation	ontime5	4411.3524675369	Sum of GTIs [s]
revision	4	Processing version of data	ontime6	1857.3880368024	Sum of GTIs [s]
			ontime7	4122.9462129027	Sum of GTIs [s]
			ontime8	1841.1007867604	Sum of GTIs [s]
			ontime9	1763.1242897511	Sum of GTIs [s]
			l1events	1469883	Number of level 1 events

### 2.1.4 Events

	ccd 4	ccd 5	ccd 6	ccd 7	ccd 8	ccd 9		ccd 4	ccd 5	ccd 6	ccd 7	ccd 8	ccd 9
level 1 events	154020	381238	185596	393242	185315	170472	grade 0 events	77381	92357	92392	95780	91650	84053
rejected events	17495	34904	17717	23160	20051	17254		50%	24%	49%	24%	49%	49%
rejected %	11%	9%	9%	5%	10%	10%	grade 1 events	476	690	500	264	516	494
								0%	0%	0%	0%	0%	0%
							grade 2 events	23555	118058	28723	82763	28922	27155
								15%	30%	15%	21%	15%	15%
							grade 3 events	8559	23848	10465	38081	10356	9618
								5%	6%	5%	9%	5%	5%
							grade 4 events	8474	23547	10437	38341	10404	9576
								5%	6%	5%	9%	5%	5%
							grade 5 events	1125	7258	1374	5144	1498	1350
								0%	1%	0%	1%	0%	0%
							grade 6 events	18556	88794	26161	115399	24249	22816
								12%	23%	14%	29%	13%	13%
							grade 7 events	15894	26686	15544	17470	17720	15410
								10%	6%	8%	4%	9%	9%

## 2.2 Compared Parameters

Parameter	Planned	Actual	Parameter	Planned	Actual
Instrument	ACIS	ACIS	Obspar format version number	7	7
Detector	ACIS-456789	ACIS-456789	Obspar file type	PREDICTED	ACTUAL
Grating	NONE	NONE	Obspar update status	NONE	UPDATED
Data mode	FAINT	FAINT	On-chip summing requested	N	N
Observation mode	SECONDARY	SECONDARY	Subarray requested	NONE	NONE
[deg] Pointing RA	0	283.2670274297383	Alternating exposures requested	N	N
[deg] Pointing Dec	0	-62.23360275466415	[s] Primary exposure time	0.000000	3.2
[deg] Pointing Roll	0.0	96.82485104985896			
[mm] SIM focus pos	-0.684267	-0.6828225247311905			
[mm] SIM defocus	0	0.8505141146731063			
[mm] SIM translation stage pos	-190.132523	250.466033080201			
[mm] SIM translation stage offset	0	-0.01005468664627074			
[s] Observation start time (MET)	70581581.55599999	70581580.78790601			
Observation start date	2000-03-27T21:59:42	2000-03-27T21:59:40			
[s] Observation end time (MET)	70625828.758	70625827.98952401			
Observation end date	2000-03-28T10:17:09	2000-03-28T10:17:07			
Read mode	TIMED	TIMED			

## 2.3 Star Slots

## 2.4 FID Slots

## A Summary

### A.1 Status

V&V Scientist	Jen Lauer
V&V Date (YYYY-MM-DD)	2012.08.28
V&V Edition	1
V&V Disposition and Status	OK
V&V Charge Time	4.1229462129027

### A.2 Comments