

V&V Reference Report

L2 ASCDS Version : 7.6.10

Observation 62084 - L2 Version 001
Chandra X-Ray Center

L2 Processing Date : Jun 29 2007

Contents

1	Front	2
2	OBI	3
2.1	OBI	3
2.1.1	Images	3
2.1.2	Bias	3
2.1.3	Parameters	4
2.1.4	Events	4
2.2	Compared Parameters	5
2.3	Star Slots	6
2.4	FID Slots	6
A	Summary	7
A.1	Status	7
A.2	Comments	7

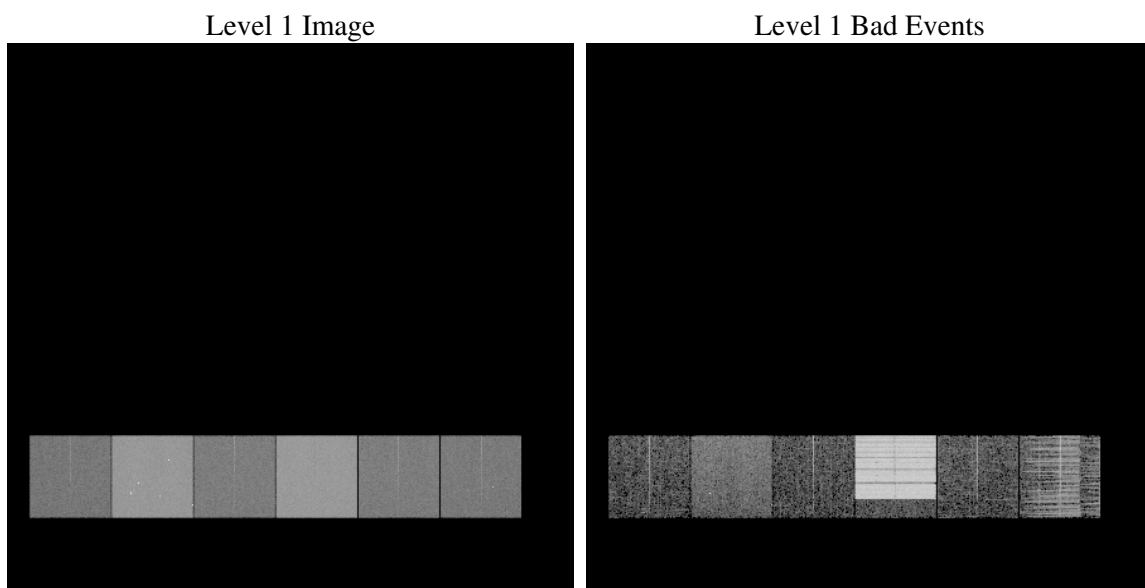
1 Front

seq_num	
obs_id	62084
title	ACIS-456789 diagnostics
observer	CHANDRA engineering request/realtime commanding
object	
dtcycle	0
cycle	P
ra_targ	0.0
dec_targ	0.0
ra_nom	60.042873765374
dec_nom	49.991561350379
roll_nom	310.72506184918
revision	4
ontime	4221.6010248065
livetime	4168.1445706874
ontime4	1656.9757719785
ontime5	4500.3656520396
ontime6	1858.9768351763
ontime7	4221.6010248065
ontime8	1852.5768651068
ontime9	1764.8636351824
l2events	867990

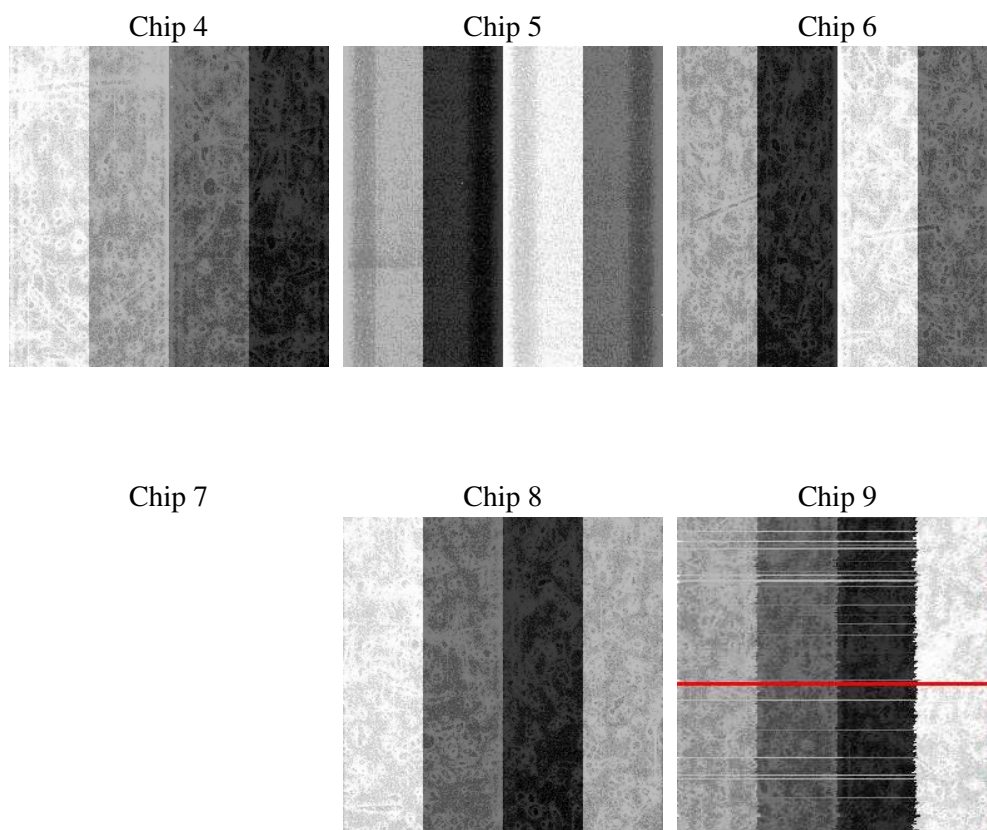
2 OBI

2.1 OBI

2.1.1 Images



2.1.2 Bias



2.1.3 Parameters

obi_num	0
ascdsver	7.6.10
caldbver	3.4.0
date	2007-06-29T18:52:44
revision	4

sched_exp_time	0.0
ontime	4221.6010248065
ontime4	1656.9757719785
ontime5	4500.3656520396
ontime6	1858.9768351763
ontime7	4221.6010248065
ontime8	1852.5768651068
ontime9	1764.8636351824
l1events	1468105

2.1.4 Events

	ccd 4	ccd 5	ccd 6	ccd 7	ccd 8	ccd 9
level 1 events	154084	383824	182509	396124	183264	168300
rejected events	17641	35893	17537	267839	19521	47541
rejected %	11%	9%	9%	67%	10%	28%

	ccd 4	ccd 5	ccd 6	ccd 7	ccd 8	ccd 9
grade 0 events	77560	92270	90301	41898	90567	65775
	50%	24%	49%	10%	49%	39%
grade 1 events	495	695	523	574	540	2086
	0%	0%	0%	0%	0%	1%
grade 2 events	23976	118784	28658	26098	28782	20806
	15%	30%	15%	6%	15%	12%
grade 3 events	8403	23775	10151	11996	10197	7897
	5%	6%	5%	3%	5%	4%
grade 4 events	8328	23808	10098	11865	10172	7959
	5%	6%	5%	2%	5%	4%
grade 5 events	1125	7485	1424	2709	1454	3234
	0%	1%	0%	0%	0%	1%
grade 6 events	18176	89294	25764	36428	24025	18322
	11%	23%	14%	9%	13%	10%
grade 7 events	16021	27713	15590	264556	17527	42221
	10%	7%	8%	66%	9%	25%

2.2 Compared Parameters

Parameter	Planned	Actual	Parameter	Planned	Actual
Instrument	ACIS	ACIS	Obspar format version number	6	6
Detector	ACIS-456789	ACIS-456789	Obspar file type	PREDICTED	ACTUAL
Grating	NONE	NONE	Obspar update status	NONE	UPDATED
Data mode	FAINT	FAINT	On-chip summing requested	N	N
Observation mode	SECONDARY	SECONDARY	Subarray requested	NONE	NONE
Pointing RA	0	60.04287376537405	Alternating exposures requested	N	N
Pointing Dec	0	49.99156135037939	Primary exposure time	3.2	3.2
Pointing Roll	0.0	310.7250618491768			
SIM focus pos (mm)	-0.684267	-0.7809083437167272			
SIM defocus (mm)	0	0.7524282956875696			
SIM translation stage pos (mm)	-190.132523	250.466033080201			
SIM translation stage offset (mm)	0	-0.01005468664627074			
Observation start time	72183320.41504	72183319.64657401			
Observation start date	2000-04-15T10:55:20	2000-04-15T10:55:19			
Observation end time	72226493.416623	72226492.648158			
Observation end date	2000-04-15T22:54:53	2000-04-15T22:54:52			
Read mode	TIMED	TIMED			

2.3 Star Slots

2.4 FID Slots

A Summary

A.1 Status

V&V Scientist	Joy Nichols
V&V Date (YYYY-MM-DD)	2007.08.03
V&V Edition	1
V&V Disposition and Status	OK
V&V Charge Time	4.22160102

A.2 Comments

Bias files for chips 7 and 9 are corrupted. Bias data are not aligned in columns properly and values for some rows are wildly inaccurate. In addition, chip 9 bias file has missing data due to a telemetry dropout. No attempt was made to repair the bias files for this observation because it is apparent the problem is associated with out-of-synch data. The ACIS team might be able to offer help to the user. Event data for chips 7 and 9 are definitely suspect.