

V&V Reference Report

L2 ASCDS Version : 8.4.5

Observation 62081 - L2 Version 5
Chandra X-Ray Center

L2 Processing Date : Aug 25 2012

Contents

| | | |
|----------|-------------------------------|----------|
| 1 | Front | 2 |
| 2 | OBI | 3 |
| 2.1 | OBI | 3 |
| 2.1.1 | Images | 3 |
| 2.1.2 | Bias | 3 |
| 2.1.3 | Parameters | 4 |
| 2.1.4 | Events | 4 |
| 2.2 | Compared Parameters | 5 |
| 2.3 | Star Slots | 6 |
| 2.4 | FID Slots | 6 |
| A | Summary | 7 |
| A.1 | Status | 7 |
| A.2 | Comments | 7 |

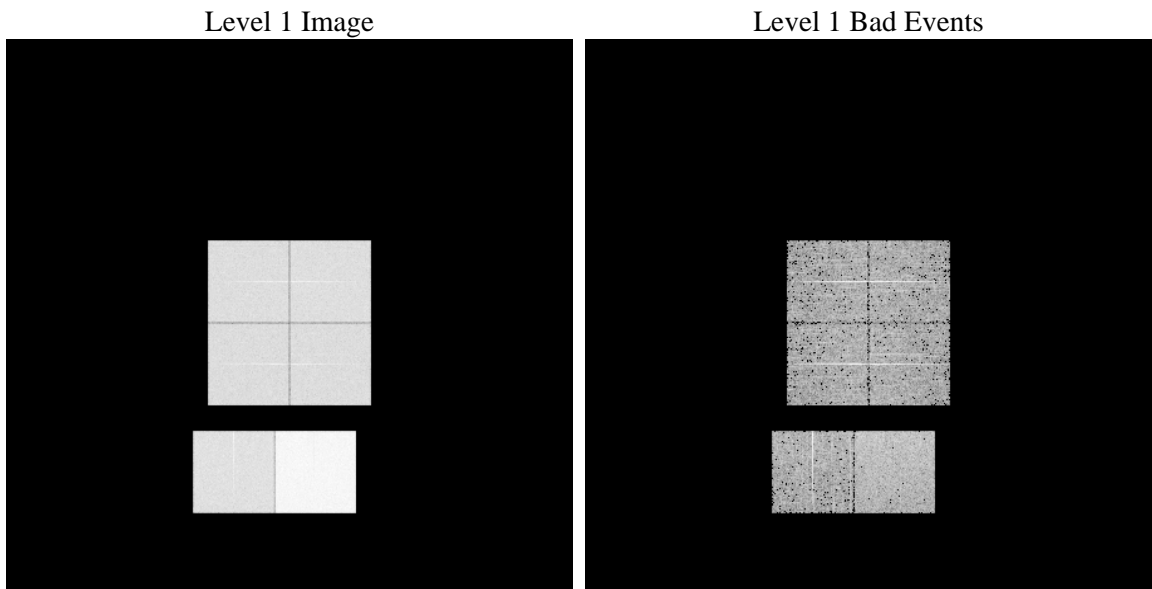
1 Front

| | | |
|----------|---|---|
| seq_num | | Sequence number |
| obs_id | 62081 | Observation id |
| title | ACIS-012367 diagnostics | Proposal title |
| observer | CHANDRA engineering request/realtime commanding | Principal investig |
| object | | Source name |
| dtcycle | 0 | |
| cycle | P | events from which exps? Prim/Second/Both |
| ra_targ | 0.0 | Observer's specified target RA [deg] |
| dec_targ | 0.0 | Observer's specified target Dec [deg] |
| ra_nom | 70.035695610186 | Nominal RA [deg] |
| dec_nom | 44.98614151685 | Nominal Dec [deg] |
| roll_nom | 298.95880428835 | Nominal Roll [deg] |
| revision | 5 | Processing version of data |
| ontime | 5466.7349476814 | Sum of GTIs [s] |
| livetime | 5397.5118581013 | Livetime [s] |
| ontime0 | 2261.10767515 | Sum of GTIs [s] |
| ontime1 | 2309.9969976693 | Sum of GTIs [s] |
| ontime2 | 2134.9810176492 | Sum of GTIs [s] |
| ontime3 | 2141.1071154326 | Sum of GTIs [s] |
| ontime6 | 2410.3183654547 | Sum of GTIs [s] |
| ontime7 | 5466.7349476814 | Sum of GTIs [s] |
| l2events | 1387367 | Number of level 2 events |

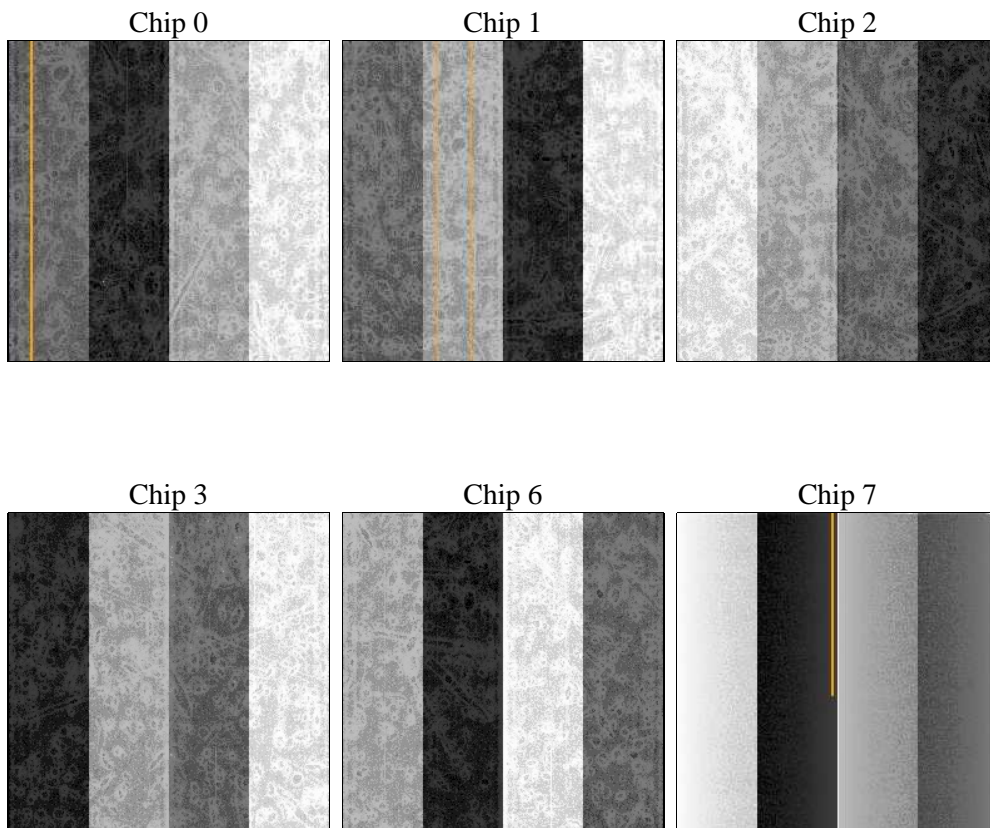
2 OBI

2.1 OBI

2.1.1 Images



2.1.2 Bias



2.1.3 Parameters

| | | | | | |
|----------|---------------------|--------------------------------|----------------|-----------------|---|
| obi_num | 0 | Obi number | sched_exp_time | 0.0 | [s] Scheduled observation exposure time |
| ascdsver | 8.4.5 | Processing system revision | ontime | 5466.7349476814 | Sum of GTIs [s] |
| caldbver | 4.5.1.1 | | ontime0 | 2261.10767515 | Sum of GTIs [s] |
| date | 2012-08-25T21:41:00 | Date and time of file creation | ontime1 | 2309.9969976693 | Sum of GTIs [s] |
| revision | 5 | Processing version of data | ontime2 | 2134.9810176492 | Sum of GTIs [s] |
| | | | ontime3 | 2141.1071154326 | Sum of GTIs [s] |
| | | | ontime6 | 2410.3183654547 | Sum of GTIs [s] |
| | | | ontime7 | 5466.7349476814 | Sum of GTIs [s] |
| | | | l1events | 1581335 | Number of level 1 events |

2.1.4 Events

| | ccd 0 | ccd 1 | ccd 2 | ccd 3 | ccd 6 | ccd 7 | | ccd 0 | ccd 1 | ccd 2 | ccd 3 | ccd 6 | ccd 7 |
|-----------------|--------|--------|--------|--------|--------|--------|----------------|--------|--------|--------|--------|--------|--------|
| level 1 events | 210637 | 216315 | 202918 | 203711 | 236700 | 511054 | grade 0 events | 104899 | 107859 | 101400 | 102973 | 116787 | 123145 |
| rejected events | 20508 | 21324 | 21232 | 20851 | 22256 | 30644 | | 49% | 49% | 49% | 50% | 49% | 24% |
| rejected % | 9% | 9% | 10% | 10% | 9% | 5% | grade 1 events | 594 | 599 | 666 | 632 | 657 | 338 |
| | | | | | | | | 0% | 0% | 0% | 0% | 0% | 0% |
| | | | | | | | grade 2 events | 33337 | 34211 | 31720 | 31692 | 37189 | 106452 |
| | | | | | | | | 15% | 15% | 15% | 15% | 15% | 20% |
| | | | | | | | grade 3 events | 12172 | 12435 | 11617 | 11589 | 13126 | 49631 |
| | | | | | | | | 5% | 5% | 5% | 5% | 5% | 9% |
| | | | | | | | grade 4 events | 11908 | 12409 | 11476 | 11455 | 13439 | 49026 |
| | | | | | | | | 5% | 5% | 5% | 5% | 5% | 9% |
| | | | | | | | grade 5 events | 1543 | 1594 | 1475 | 1517 | 1800 | 7057 |
| | | | | | | | | 0% | 0% | 0% | 0% | 0% | 1% |
| | | | | | | | grade 6 events | 27813 | 28348 | 25784 | 25151 | 33903 | 152415 |
| | | | | | | | | 13% | 13% | 12% | 12% | 14% | 29% |
| | | | | | | | grade 7 events | 18371 | 18860 | 18780 | 18702 | 19799 | 22990 |
| | | | | | | | | 8% | 8% | 9% | 9% | 8% | 4% |

2.2 Compared Parameters

| Parameter | Planned | Actual |
|-----------------------------------|---------------------|----------------------|
| Instrument | ACIS | ACIS |
| Detector | ACIS-012367 | ACIS-012367 |
| Grating | NONE | NONE |
| Data mode | FAINT | FAINT |
| Observation mode | SECONDARY | SECONDARY |
| [deg] Pointing RA | 0 | 70.03569561018618 |
| [deg] Pointing Dec | 0 | 44.98614151685026 |
| [deg] Pointing Roll | 0.0 | 298.9588042883506 |
| [mm] SIM focus pos | -0.782348 | -0.6828225247311905 |
| [mm] SIM defocus | 0 | 0.8505141146731063 |
| [mm] SIM translation stage pos | -233.592463 | 250.466033080201 |
| [mm] SIM translation stage offset | 0 | -0.01005468664627074 |
| [s] Observation start time (MET) | 72458176.22499999 | 72458175.456653 |
| Observation start date | 2000-04-18T15:16:16 | 2000-04-18T15:16:15 |
| [s] Observation end time (MET) | 72468377.02500001 | 72468376.257027 |
| Observation end date | 2000-04-18T18:06:17 | 2000-04-18T18:06:16 |
| Read mode | TIMED | TIMED |

| Parameter | Planned | Actual |
|---------------------------------|-----------|---------|
| Obspar format version number | 7 | 7 |
| Obspar file type | PREDICTED | ACTUAL |
| Obspar update status | NONE | UPDATED |
| On-chip summing requested | N | N |
| Subarray requested | NONE | NONE |
| Alternating exposures requested | N | N |
| [s] Primary exposure time | 0.000000 | 3.2 |

2.3 Star Slots

2.4 FID Slots

A Summary

A.1 Status

| | |
|----------------------------|-----------------|
| V&V Scientist | Jen Lauer |
| V&V Date (YYYY-MM-DD) | 2012.08.28 |
| V&V Edition | 1 |
| V&V Disposition and Status | OK |
| V&V Charge Time | 5.4667349476814 |

A.2 Comments