

# V&V Reference Report

## L2 ASCDS Version : 7.6.10

Observation 62080 - L2 Version 4  
Chandra X-Ray Center

L2 Processing Date : Sep 6 2007

## Contents

<b>1</b>	<b>Front</b>	<b>2</b>
<b>2</b>	<b>OBI</b>	<b>3</b>
2.1	OBI . . . . .	3
2.1.1	Images . . . . .	3
2.1.2	Bias . . . . .	3
2.1.3	Parameters . . . . .	4
2.1.4	Events . . . . .	4
2.2	Compared Parameters . . . . .	5
2.3	Star Slots . . . . .	6
2.4	FID Slots . . . . .	6
<b>A</b>	<b>Summary</b>	<b>7</b>
A.1	Status . . . . .	7
A.2	Comments . . . . .	7

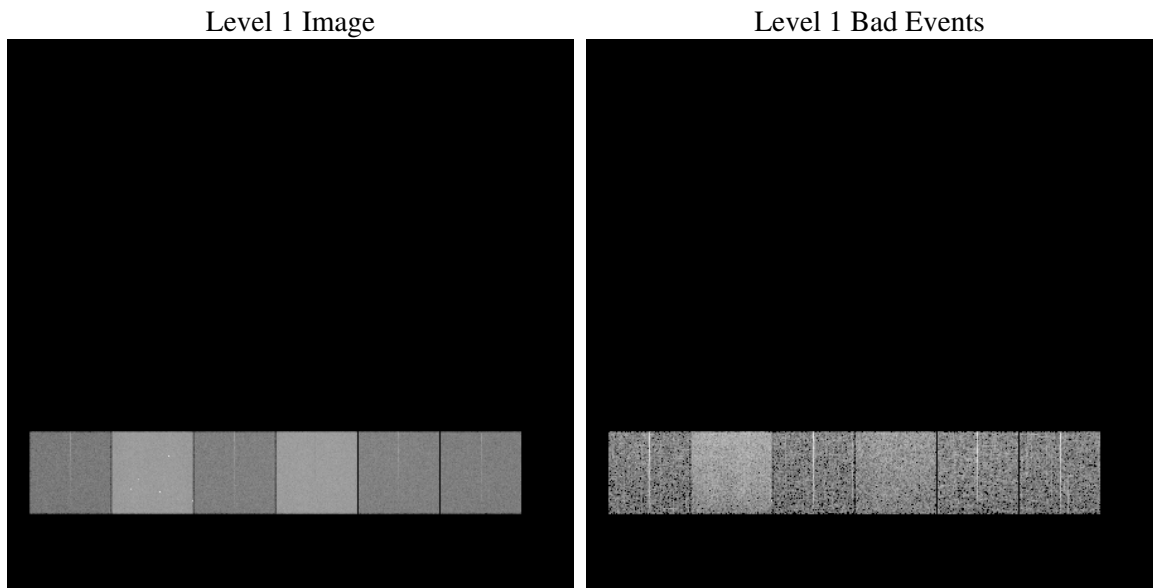
# 1 Front

seq_num	&#160
obs_id	62080
title	ACIS-456789 diagnostics
observer	CHANDRA engineering request/realtime commanding
object	&#160
dtcycle	0
cycle	P
ra_targ	0.0
dec_targ	0.0
ra_nom	63.046422862676
dec_nom	52.992971015663
roll_nom	313.63588285628
revision	4
ontime	4156.177007705
livetime	4103.5489918841
ontime4	1618.7606766671
ontime5	4473.7919473201
ontime6	1796.9768361896
ontime7	4156.177007705
ontime8	1874.8438759893
ontime9	1780.6484663934
l2events	1277595

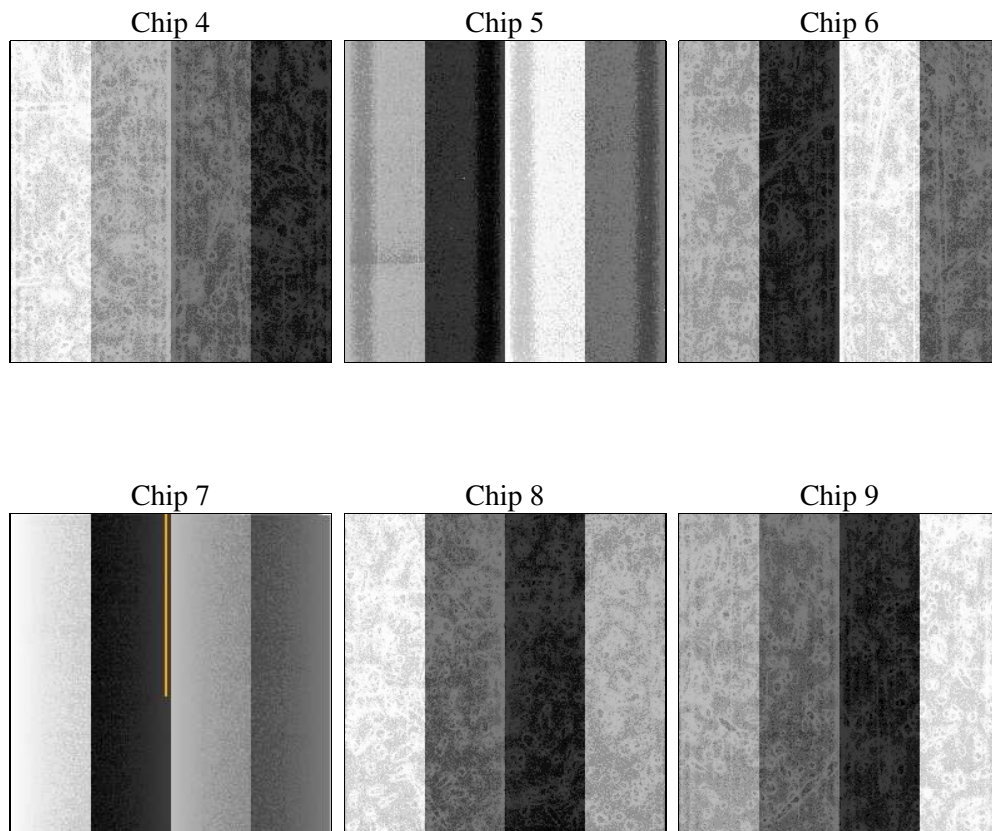
## 2 OBI

### 2.1 OBI

#### 2.1.1 Images



#### 2.1.2 Bias



### 2.1.3 Parameters

obi_num	0
ascdsver	7.6.11.1
caldsver	3.4.0
date	2007-09-06T18:37:40
revision	4

sched_exp_time	0.0
ontime	4156.177007705
ontime4	1618.7606766671
ontime5	4473.7919473201
ontime6	1796.9768361896
ontime7	4156.177007705
ontime8	1874.8438759893
ontime9	1780.6484663934
l1events	1463135

### 2.1.4 Events

	ccd 4	ccd 5	ccd 6	ccd 7	ccd 8	ccd 9
level 1 events	150649	383329	178140	393221	187056	170740
rejected events	17232	34548	17352	23931	19826	17614
rejected %	11%	9%	9%	6%	10%	10%

	ccd 4	ccd 5	ccd 6	ccd 7	ccd 8	ccd 9
grade 0 events	75611	95540	87887	95981	92227	84018
	50%	24%	49%	24%	49%	49%
grade 1 events	518	335	535	263	516	532
	0%	0%	0%	0%	0%	0%
grade 2 events	23395	115973	27850	82156	29562	26874
	15%	30%	15%	20%	15%	15%
grade 3 events	8203	24808	9789	38130	10695	9516
	5%	6%	5%	9%	5%	5%
grade 4 events	8128	24389	9964	37666	10436	9518
	5%	6%	5%	9%	5%	5%
grade 5 events	1239	7226	1311	5255	1523	1385
	0%	1%	0%	1%	0%	0%
grade 6 events	18331	88307	25582	115659	24568	23502
	12%	23%	14%	29%	13%	13%
grade 7 events	15224	26751	15222	18111	17529	15395
	10%	6%	8%	4%	9%	9%

## 2.2 Compared Parameters

Parameter	Planned	Actual	Parameter	Planned	Actual
Instrument	ACIS	ACIS	Obspar format version number	6	6
Detector	ACIS-456789	ACIS-456789	Obspar file type	PREDICTED	ACTUAL
Grating	NONE	NONE	Obspar update status	NONE	UPDATED
Data mode	FAINT	FAINT	On-chip summing requested	N	N
Observation mode	SECONDARY	SECONDARY	Subarray requested	NONE	NONE
Pointing RA	0	63.04642286267616	Alternating exposures requested	N	N
Pointing Dec	0	52.99297101566312	Primary exposure time	3.2	3.2
Pointing Roll	0.0	313.6358828562758			
SIM focus pos (mm)	-0.684267	-0.6828225247311905			
SIM defocus (mm)	0	0.8505141146731063			
SIM translation stage pos (mm)	-190.132523	250.466033080201			
SIM translation stage offset (mm)	0	-0.01005468664627074			
Observation start time	72637996.081715	72637995.31324799			
Observation start date	2000-04-20T17:13:16	2000-04-20T17:13:15			
Observation end time	72682056.73333099	72682055.964864			
Observation end date	2000-04-21T05:27:37	2000-04-21T05:27:35			
Read mode	TIMED	TIMED			

## **2.3 Star Slots**

## **2.4 FID Slots**

## A Summary

### A.1 Status

V&V Scientist	Beth Sundheim
V&V Date (YYYY-MM-DD)	2007.09.06
V&V Edition	1
V&V Disposition and Status	OK
V&V Charge Time	4.156177

### A.2 Comments