

# V&V Reference Report

## L2 ASCDS Version : 8.4.5

Observation 62047 - L2 Version 5  
Chandra X-Ray Center

L2 Processing Date : Aug 28 2012

## Contents

<b>1</b>	<b>Front</b>	<b>2</b>
<b>2</b>	<b>OBI</b>	<b>3</b>
2.1	OBI . . . . .	3
2.1.1	Images . . . . .	3
2.1.2	Bias . . . . .	3
2.1.3	Parameters . . . . .	4
2.1.4	Events . . . . .	4
2.2	Compared Parameters . . . . .	5
2.3	Star Slots . . . . .	6
2.4	FID Slots . . . . .	6
<b>A</b>	<b>Summary</b>	<b>7</b>
A.1	Status . . . . .	7
A.2	Comments . . . . .	7

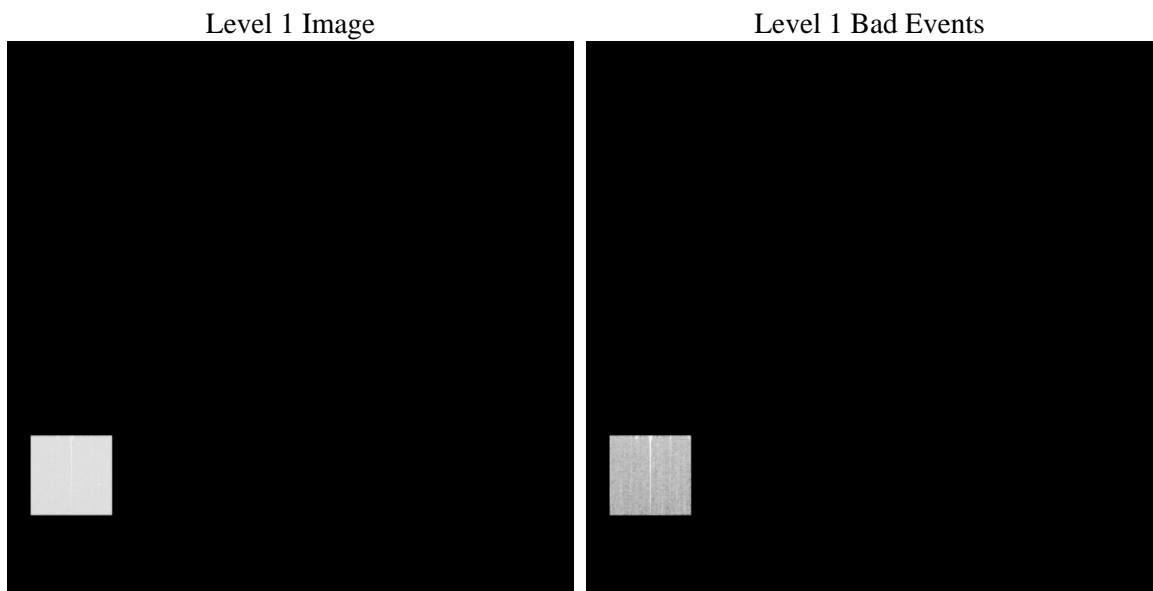
# 1 Front

seq_num	&#160	Sequence number
obs_id	62047	Observation id
title	ACIS-4 diagnostics; squeegee IV, CAP 607	Proposal title
observer	CHANDRA engineering request/realtime commanding	Principal investig
object	&#160	Source name
dtcycle	0	&#160
cycle	P	events from which exps? Prim/Second/Both
ra_targ	0.0	Observer's specified target RA [deg]
dec_targ	0.0	Observer's specified target Dec [deg]
ra_nom	19.440291120996	Nominal RA [deg]
dec_nom	-61.397514059913	Nominal Dec [deg]
roll_nom	142.54723223367	Nominal Roll [deg]
revision	5	Processing version of data
ontime	10182.210822597	Sum of GTIs [s]
livetime	10057.136614518	Livetime [s]
ontime4	10182.210822597	Sum of GTIs [s]
l2events	698524	Number of level 2 events

## 2 OBI

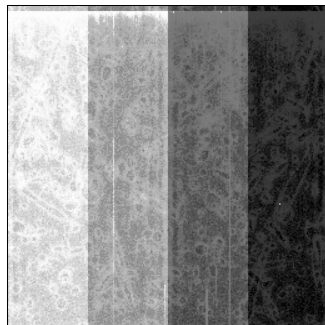
### 2.1 OBI

#### 2.1.1 Images



#### 2.1.2 Bias

Chip 4



### 2.1.3 Parameters

obi_num	0	Obi number	sched_exp_time	0.0	[s] Scheduled observation exposure time
ascdsver	8.4.5	Processing system revision	ontime	10182.210822597	Sum of GTIs [s]
caldsver	4.5.1.1	&#160	ontime4	10182.210822597	Sum of GTIs [s]
date	2012-08-28T06:39:35	Date and time of file creation	l1events	879781	Number of level 1 events
revision	5	Processing version of data			

### 2.1.4 Events

	<b>ccd 4</b>
level 1 events	879781
rejected events	96192
rejected %	10%

	<b>ccd 4</b>
grade 0 events	440873
	50%
grade 1 events	2636
	0%
grade 2 events	137242
	15%
grade 3 events	49038
	5%
grade 4 events	48919
	5%
grade 5 events	6295
	0%
grade 6 events	107517
	12%
grade 7 events	87261
	9%

## 2.2 Compared Parameters

Parameter	Planned	Actual	Parameter	Planned	Actual
Instrument	ACIS	ACIS	Obspar format version number	7	7
Detector	ACIS-4	ACIS-4	Obspar file type	PREDICTED	ACTUAL
Grating	NONE	NONE	Obspar update status	NONE	UPDATED
Data mode	FAINT	FAINT	On-chip summing requested	N	N
Observation mode	SECONDARY	SECONDARY	Subarray requested	NONE	NONE
[deg] Pointing RA	0	19.44029112099645	Alternating exposures requested	N	N
[deg] Pointing Dec	0	-61.39751405991279	[s] Primary exposure time	0.000000	3.3
[deg] Pointing Roll	0.0	142.5472322336723			
[mm] SIM focus pos	-0.684267	-0.6828225247311905			
[mm] SIM defocus	0	0.8505141146731063			
[mm] SIM translation stage pos	-190.132523	250.466033080201			
[mm] SIM translation stage offset	0	-0.01005468664627074			
[s] Observation start time (MET)	75419782.634	75419781.865385			
Observation start date	2000-05-22T21:56:23	2000-05-22T21:56:21			
[s] Observation end time (MET)	75433406.934	75433406.165886			
Observation end date	2000-05-23T01:43:27	2000-05-23T01:43:26			
Read mode	TIMED	TIMED			

## 2.3 Star Slots

## 2.4 FID Slots

## A Summary

### A.1 Status

V&V Scientist	Jen Lauer
V&V Date (YYYY-MM-DD)	2012.08.30
V&V Edition	1
V&V Disposition and Status	OK
V&V Charge Time	10.182210822597

### A.2 Comments

Squeegy mode diagnostic observation; bias map is non-standard.