

V&V Reference Report

L2 ASCDS Version : 8.4.5

Observation 62044 - L2 Version 5
Chandra X-Ray Center

L2 Processing Date : Aug 28 2012

Contents

1	Front	2
2	OBI	3
2.1	OBI	3
2.1.1	Images	3
2.1.2	Bias	3
2.1.3	Parameters	4
2.1.4	Events	4
2.2	Compared Parameters	5
2.3	Star Slots	6
2.4	FID Slots	6
A	Summary	7
A.1	Status	7
A.2	Comments	7

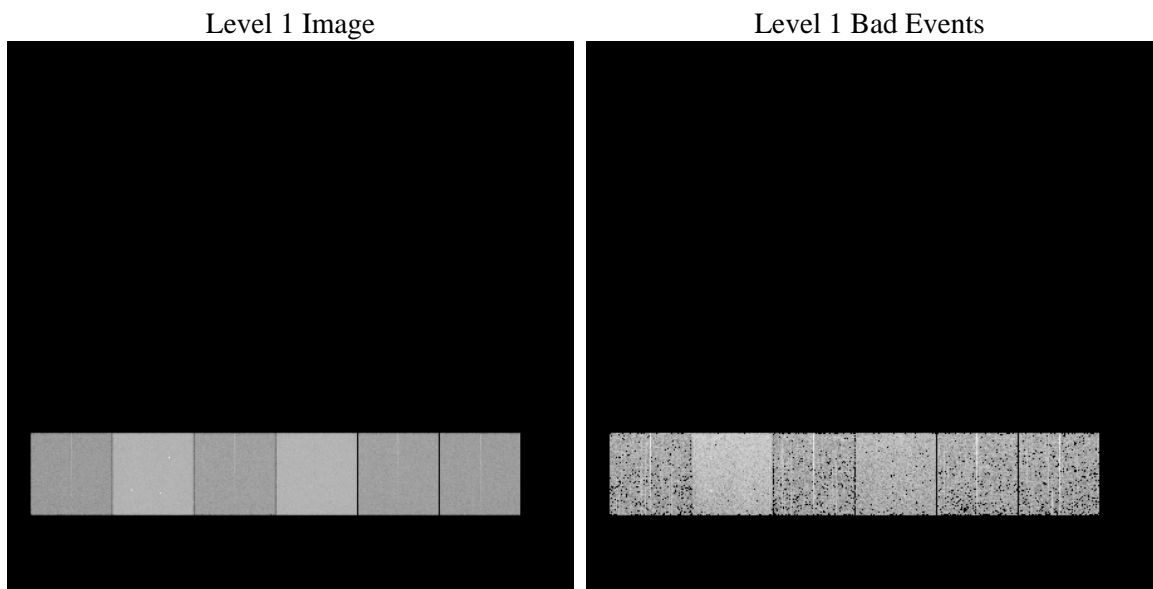
1 Front

seq_num	 	Sequence number
obs_id	62044	Observation id
title	ACIS-456789 diagnostics	Proposal title
observer	CHANDRA engineering request/realtime commanding	Principal investig
object	 	Source name
dtcycle	0	
cycle	P	events from which exps? Prim/Second/Both
ra_targ	0.0	Observer's specified target RA [deg]
dec_targ	0.0	Observer's specified target Dec [deg]
ra_nom	19.440637445335	Nominal RA [deg]
dec_nom	-61.395406876909	Nominal Dec [deg]
roll_nom	138.49211752908	Nominal Roll [deg]
revision	5	Processing version of data
ontime	4101.4854661822	Sum of GTIs [s]
livetime	4049.5499875914	Livetime [s]
ontime4	1661.3347775489	Sum of GTIs [s]
ontime5	4406.1368734688	Sum of GTIs [s]
ontime6	1887.8687122911	Sum of GTIs [s]
ontime7	4101.4854661822	Sum of GTIs [s]
ontime8	1897.5917923301	Sum of GTIs [s]
ontime9	1790.8121374398	Sum of GTIs [s]
l2events	1236578	Number of level 2 events

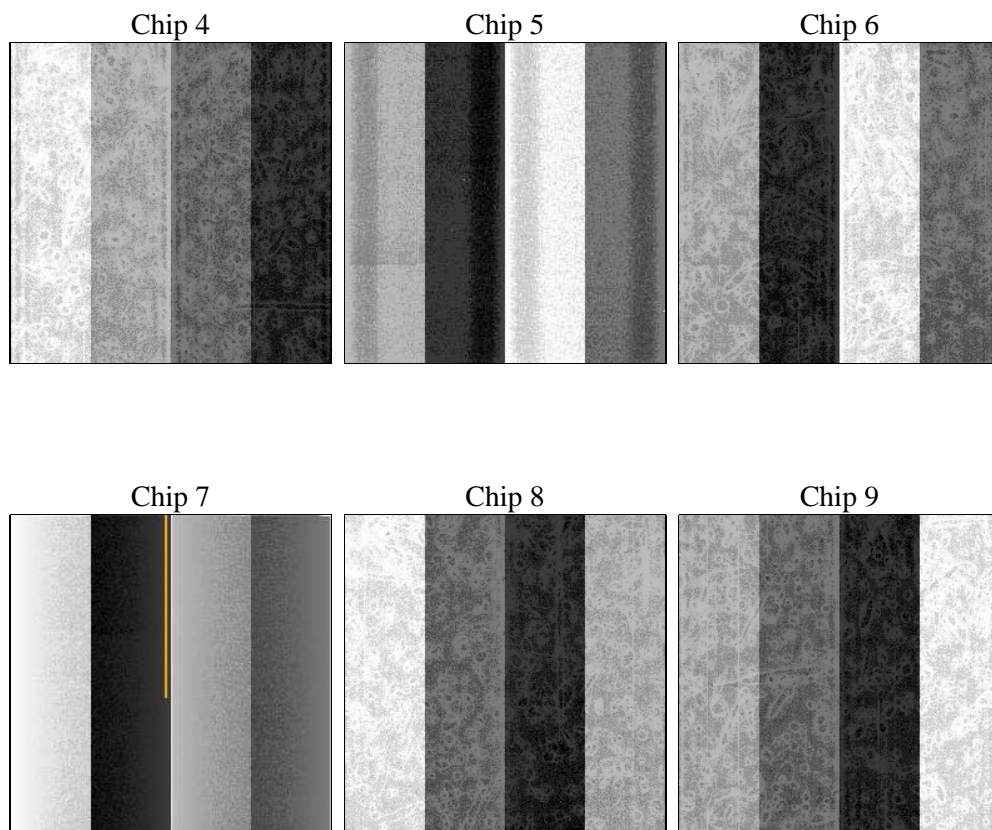
2 OBI

2.1 OBI

2.1.1 Images



2.1.2 Bias



2.1.3 Parameters

obi_num	0	Obi number	sched_exp_time	0.0	[s] Scheduled observation exposure time
ascdsver	8.4.5	Processing system revision	ontime	4101.4854661822	Sum of GTIs [s]
caldsver	4.5.1.1	 	ontime4	1661.3347775489	Sum of GTIs [s]
date	2012-08-28T08:20:15	Date and time of file creation	ontime5	4406.1368734688	Sum of GTIs [s]
revision	5	Processing version of data	ontime6	1887.8687122911	Sum of GTIs [s]
			ontime7	4101.4854661822	Sum of GTIs [s]
			ontime8	1897.5917923301	Sum of GTIs [s]
			ontime9	1790.8121374398	Sum of GTIs [s]
			l1events	1411043	Number of level 1 events

2.1.4 Events

	ccd 4	ccd 5	ccd 6	ccd 7	ccd 8	ccd 9		ccd 4	ccd 5	ccd 6	ccd 7	ccd 8	ccd 9
level 1 events	149689	360571	181929	372111	181763	164980	grade 0 events	75586	87370	90294	90912	90849	81719
rejected events	16316	32536	16955	20926	17523	16295		50%	24%	49%	24%	49%	49%
rejected %	10%	9%	9%	5%	9%	9%	grade 1 events	441	237	489	253	488	450
								0%	0%	0%	0%	0%	0%
							grade 2 events	23340	110673	28758	78266	28903	26189
								15%	30%	15%	21%	15%	15%
							grade 3 events	8305	22753	10175	36383	10421	9237
								5%	6%	5%	9%	5%	5%
							grade 4 events	8205	22413	10237	35612	10270	9025
								5%	6%	5%	9%	5%	5%
							grade 5 events	1045	6891	1309	4895	1428	1353
								0%	1%	0%	1%	0%	0%
							grade 6 events	17937	84826	25510	110012	23797	22515
								11%	23%	14%	29%	13%	13%
							grade 7 events	14830	25408	15157	15778	15607	14492
								9%	7%	8%	4%	8%	8%

2.2 Compared Parameters

Parameter	Planned	Actual
Instrument	ACIS	ACIS
Detector	ACIS-456789	ACIS-456789
Grating	NONE	NONE
Data mode	FAINT	FAINT
Observation mode	SECONDARY	SECONDARY
[deg] Pointing RA	0	19.44063744533508
[deg] Pointing Dec	0	-61.39540687690867
[deg] Pointing Roll	0.0	138.4921175290773
[mm] SIM focus pos	-0.684267	-0.7809083437167272
[mm] SIM defocus	0	0.7524282956875696
[mm] SIM translation stage pos	-190.132523	250.466033080201
[mm] SIM translation stage offset	0	-0.01005468664627074
[s] Observation start time (MET)	75836145.849135	75836145.080689
Observation start date	2000-05-27T17:35:46	2000-05-27T17:35:45
[s] Observation end time (MET)	75880596.00076699	75880595.232324
Observation end date	2000-05-28T05:56:36	2000-05-28T05:56:35
Read mode	TIMED	TIMED

Parameter	Planned	Actual
Obspar format version number	7	7
Obspar file type	PREDICTED	ACTUAL
Obspar update status	NONE	UPDATED
On-chip summing requested	N	N
Subarray requested	NONE	NONE
Alternating exposures requested	N	N
[s] Primary exposure time	3.2	3.2

2.3 Star Slots

2.4 FID Slots

A Summary

A.1 Status

V&V Scientist	Jen Lauer
V&V Date (YYYY-MM-DD)	2012.08.30
V&V Edition	1
V&V Disposition and Status	OK
V&V Charge Time	4.1014854661822

A.2 Comments