

V&V Reference Report

L2 ASCDS Version : 8.4.5

Observation 62030 - L2 Version 5
Chandra X-Ray Center

L2 Processing Date : Aug 28 2012

Contents

1	Front	2
2	OBI	3
2.1	OBI	3
2.1.1	Images	3
2.1.2	Bias	3
2.1.3	Parameters	4
2.1.4	Events	4
2.2	Compared Parameters	5
2.3	Star Slots	6
2.4	FID Slots	6
A	Summary	7
A.1	Status	7
A.2	Comments	7

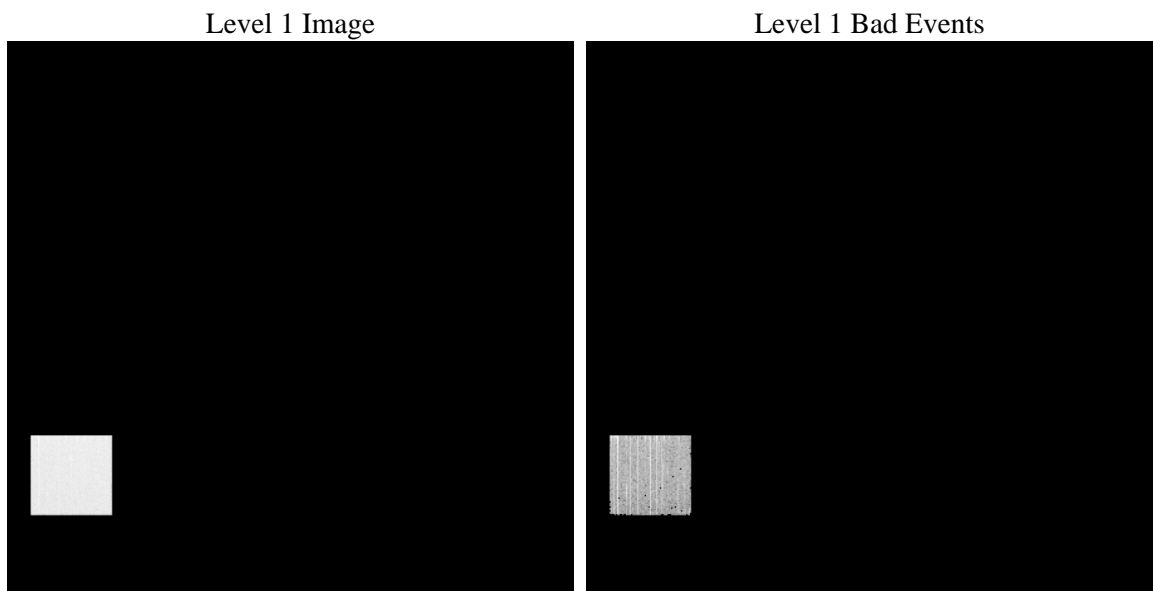
1 Front

seq_num	 	Sequence number
obs_id	62030	Observation id
title	ACIS-4 diagnostics	Proposal title
observer	CHANDRA engineering request/realtime commanding	Principal investig
object	 	Source name
dtcycle	0	
cycle	P	events from which exps? Prim/Second/Both
ra_targ	0.0	Observer's specified target RA [deg]
dec_targ	0.0	Observer's specified target Dec [deg]
ra_nom	93.202035440792	Nominal RA [deg]
dec_nom	-69.830729346808	Nominal Dec [deg]
roll_nom	193.61780278665	Nominal Roll [deg]
revision	5	Processing version of data
ontime	5431.0445967615	Sum of GTIs [s]
livetime	5316.2143664462	Livetime [s]
ontime4	5431.0445967615	Sum of GTIs [s]
l2events	327287	Number of level 2 events

2 OBI

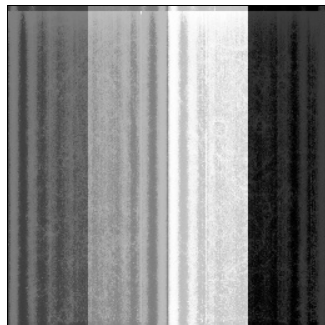
2.1 OBI

2.1.1 Images



2.1.2 Bias

Chip 4



2.1.3 Parameters

obi_num	0	Obi number	sched_exp_time	0.0	[s] Scheduled observation exposure time
ascdsver	8.4.5	Processing system revision	ontime	5431.0445967615	Sum of GTIs [s]
caldbver	4.5.1.1	 	ontime4	5431.0445967615	Sum of GTIs [s]
date	2012-08-29T01:26:15	Date and time of file creation	l1events	409114	Number of level 1 events
revision	5	Processing version of data			

2.1.4 Events

	ccd 4
level 1 events	409114
rejected events	38003
rejected %	9%

	ccd 4
grade 0 events	73315
	17%
grade 1 events	377
	0%
grade 2 events	249005
	60%
grade 3 events	4763
	1%
grade 4 events	4729
	1%
grade 5 events	2720
	0%
grade 6 events	39591
	9%
grade 7 events	34614
	8%

2.2 Compared Parameters

Parameter	Planned	Actual
Instrument	ACIS	ACIS
Detector	ACIS-4	ACIS-4
Grating	NONE	NONE
Data mode	FAINT	FAINT
Observation mode	SECONDARY	SECONDARY
[deg] Pointing RA	0	93.20203544079214
[deg] Pointing Dec	0	-69.83072934680845
[deg] Pointing Roll	0.0	193.6178027866478
[mm] SIM focus pos	-0.684267	-0.6828225247311905
[mm] SIM defocus	0	0.8505141146731063
[mm] SIM translation stage pos	-190.132523	250.466033080201
[mm] SIM translation stage offset	0	-0.01005468664627074
[s] Observation start time (MET)	76978364.891	76978364.122734
Observation start date	2000-06-09T22:52:45	2000-06-09T22:52:44
[s] Observation end time (MET)	76988161.84199999	76988161.073094
Observation end date	2000-06-10T01:36:02	2000-06-10T01:36:01
Read mode	TIMED	TIMED

Parameter	Planned	Actual
Obspar format version number	7	7
Obspar file type	PREDICTED	ACTUAL
Obspar update status	NONE	UPDATED
On-chip summing requested	N	N
Subarray requested	NONE	NONE
Alternating exposures requested	N	N
[s] Primary exposure time	0.000000	1.9

2.3 Star Slots

2.4 FID Slots

A Summary

A.1 Status

V&V Scientist	Jen Lauer
V&V Date (YYYY-MM-DD)	2012.08.31
V&V Edition	1
V&V Disposition and Status	OK
V&V Charge Time	5.4310445967615

A.2 Comments

Squeegy mode diagnostic observation; bias map is non-standard.