

# V&V Reference Report

## L2 ASCDS Version : 8.4.5

Observation 62016 - L2 Version 5  
Chandra X-Ray Center

L2 Processing Date : Aug 30 2012

## Contents

<b>1</b>	<b>Front</b>	<b>2</b>
<b>2</b>	<b>OBI</b>	<b>3</b>
2.1	OBI . . . . .	3
2.1.1	Images . . . . .	3
2.1.2	Bias . . . . .	3
2.1.3	Parameters . . . . .	4
2.1.4	Events . . . . .	4
2.2	Compared Parameters . . . . .	5
2.3	Star Slots . . . . .	6
2.4	FID Slots . . . . .	6
<b>A</b>	<b>Summary</b>	<b>7</b>
A.1	Status . . . . .	7
A.2	Comments . . . . .	7

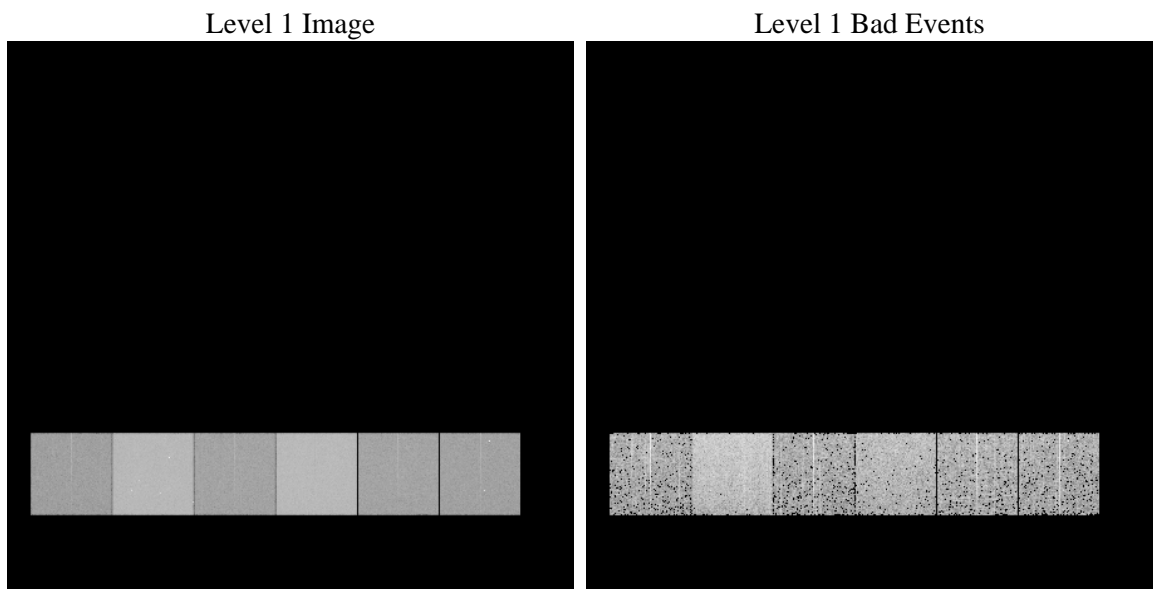
# 1 Front

seq_num	&#160	Sequence number
obs_id	62016	Observation id
title	ACIS-456789 diagnostics	Proposal title
observer	CHANDRA engineering request/realtime commanding	Principal investig
object	&#160	Source name
dtcycle	0	&#160
cycle	P	events from which exps? Prim/Second/Both
ra_targ	0.0	Observer's specified target RA [deg]
dec_targ	0.0	Observer's specified target Dec [deg]
ra_nom	322.32908285976	Nominal RA [deg]
dec_nom	62.265076251414	Nominal Dec [deg]
roll_nom	137.47265548653	Nominal Roll [deg]
revision	5	Processing version of data
ontime	4287.2490231246	Sum of GTIs [s]
livetime	4232.9612945223	Livetime [s]
ontime4	1759.8831301779	Sum of GTIs [s]
ontime5	4608.063714087	Sum of GTIs [s]
ontime6	1914.7405943274	Sum of GTIs [s]
ontime7	4287.2490231246	Sum of GTIs [s]
ontime8	1930.8637142777	Sum of GTIs [s]
ontime9	1850.6322499365	Sum of GTIs [s]
l2events	1258624	Number of level 2 events

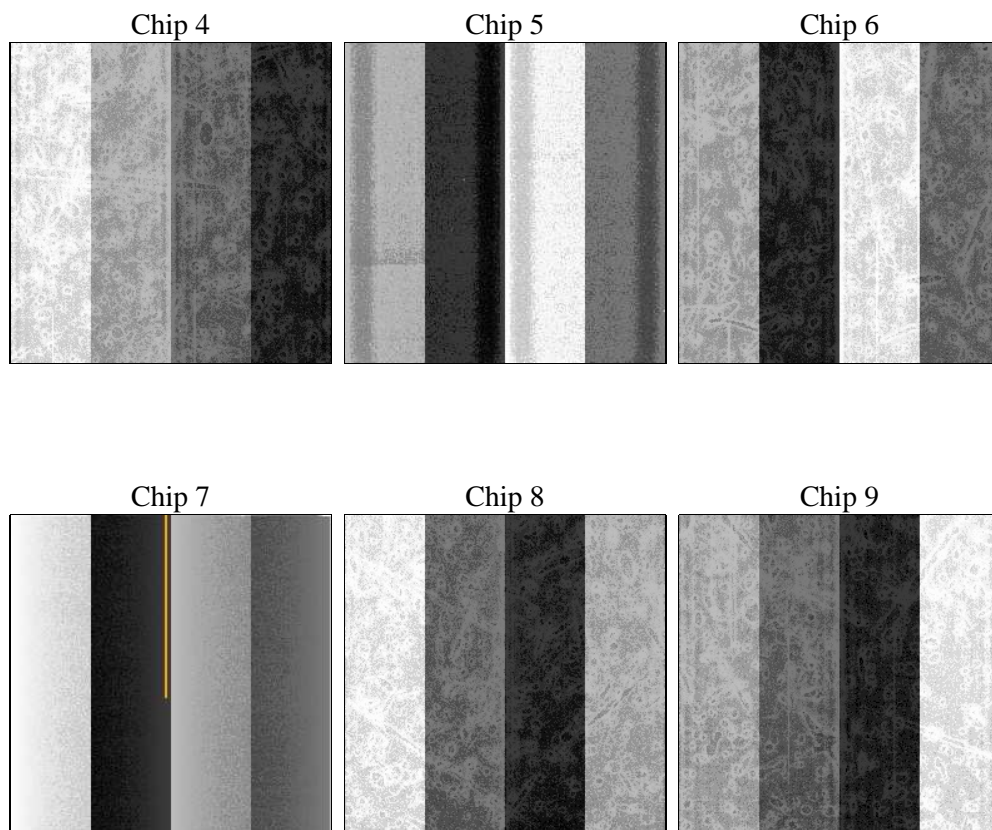
## 2 OBI

### 2.1 OBI

#### 2.1.1 Images



#### 2.1.2 Bias



### 2.1.3 Parameters

obi_num	0	Obi number	sched_exp_time	0.0	[s] Scheduled observation exposure time
ascdsver	8.4.5	Processing system revision	ontime	4287.2490231246	Sum of GTIs [s]
caldsver	4.5.1.1	&#160	ontime4	1759.8831301779	Sum of GTIs [s]
date	2012-08-30T00:47:51	Date and time of file creation	ontime5	4608.063714087	Sum of GTIs [s]
revision	5	Processing version of data	ontime6	1914.7405943274	Sum of GTIs [s]
			ontime7	4287.2490231246	Sum of GTIs [s]
			ontime8	1930.8637142777	Sum of GTIs [s]
			ontime9	1850.6322499365	Sum of GTIs [s]
			l1events	1435196	Number of level 1 events

### 2.1.4 Events

	ccd 4	ccd 5	ccd 6	ccd 7	ccd 8	ccd 9		ccd 4	ccd 5	ccd 6	ccd 7	ccd 8	ccd 9
level 1 events	154872	370412	179001	381874	181201	167836	grade 0 events	78314	91424	89019	93322	89940	83766
rejected events	16395	32419	16018	22003	18473	16232		50%	24%	49%	24%	49%	49%
rejected %	10%	8%	8%	5%	10%	9%	grade 1 events	420	332	474	238	500	508
								0%	0%	0%	0%	0%	0%
							grade 2 events	24415	113152	28518	80089	28756	26509
								15%	30%	15%	20%	15%	15%
							grade 3 events	8399	24217	10105	36950	10088	9319
								5%	6%	5%	9%	5%	5%
							grade 4 events	8570	23589	9970	36989	10212	9311
								5%	6%	5%	9%	5%	5%
							grade 5 events	1155	6978	1355	4941	1441	1259
								0%	1%	0%	1%	0%	0%
							grade 6 events	18779	85611	25371	112521	23732	22699
								12%	23%	14%	29%	13%	13%
							grade 7 events	14820	25109	14189	16824	16532	14465
								9%	6%	7%	4%	9%	8%

## 2.2 Compared Parameters

Parameter	Planned	Actual
Instrument	ACIS	ACIS
Detector	ACIS-456789	ACIS-456789
Grating	NONE	NONE
Data mode	FAINT	FAINT
Observation mode	SECONDARY	SECONDARY
[deg] Pointing RA	0	322.3290828597595
[deg] Pointing Dec	0	62.2650762514136
[deg] Pointing Roll	0.0	137.4726554865287
[mm] SIM focus pos	-0.684267	-0.6828225247311905
[mm] SIM defocus	0	0.8505141146731063
[mm] SIM translation stage pos	-190.132523	250.466033080201
[mm] SIM translation stage offset	0	-0.01005468664627074
[s] Observation start time (MET)	78349277.84199999	78349277.073249
Observation start date	2000-06-25T19:41:18	2000-06-25T19:41:17
[s] Observation end time (MET)	78396798.89300001	78396798.125001
Observation end date	2000-06-26T08:53:19	2000-06-26T08:53:18
Read mode	TIMED	TIMED

Parameter	Planned	Actual
Obspar format version number	7	7
Obspar file type	PREDICTED	ACTUAL
Obspar update status	NONE	UPDATED
On-chip summing requested	N	N
Subarray requested	NONE	NONE
Alternating exposures requested	N	N
[s] Primary exposure time	0.000000	3.2

## **2.3 Star Slots**

## **2.4 FID Slots**

## **A Summary**

### **A.1 Status**

V&V Scientist	Jen Lauer
V&V Date (YYYY-MM-DD)	2012.09.04
V&V Edition	1
V&V Disposition and Status	OK
V&V Charge Time	4.2872490231246

### **A.2 Comments**